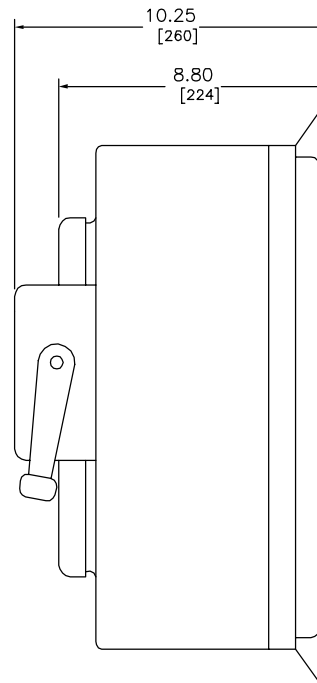
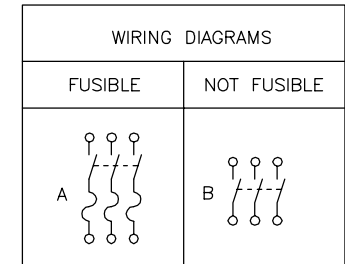


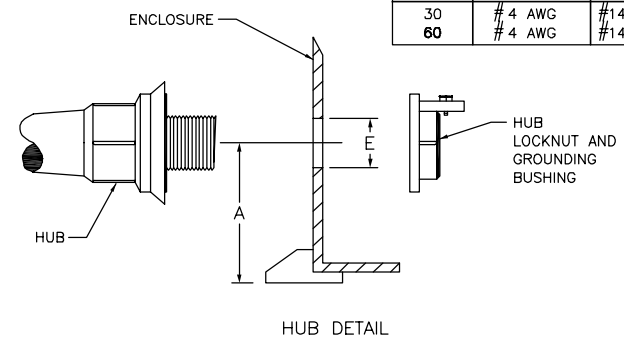
.50 DIA MOUNTING HOLES
[13]



NO KNOCKOUTS



TERMINAL LUGS ‡			
AMPERES	MAX. WIRE	MIN. WIRE	TYPE
30	# 4 AWG	# 14 AWG	AL OR CU
60	# 4 AWG	# 14 AWG	AL OR CU



DUAL DIMENSIONS: INCHES
MILLIMETERS

CATALOG NUMBER	VOLTAGE RATINGS	AMP. RATING	WIRING DIAG.	HORSEPOWER RATINGS														HUBS PROVIDED FOR FIELD INSTALLATION						ENCLOSURE HOLE SIZE DIMENSION E		MINIMUM HUB CENTERLINE DIMENSION A	
				120 VAC	240VAC				480VAC				600VAC		125 VDC	250VDC		600VDC		HUB NO.	NUMBER INCLUDED	HUB SIZE					
				MAX.	STD.		MAX.		STD.		MAX.		STD.	MAX.	MAX.	STD.	MAX.	STD.	MAX.			IN	MM				
				1Ø	1Ø	3Ø	1Ø	3Ø	1Ø	3Ø	1Ø	3Ø	3Ø	3Ø	MAX.	STD.	MAX.	STD.	MAX.								
H361DF▲	600VAC;600VDC	30	A	—	—	3	—	7.5	—	5	—	15	7.5	20	—	—	—	10	15	STG2	2	0.75	19	1.13	29	2.75	70
H362DF▲	600VAC;600VDC	60	A	—	3	7.5	10	15	5	15	20	30	15	50	—	10	—	25	30	STG4	2	1.25	32	1.75	45	3.00	76
HU361DF●	600VAC;600VDC	30	B	3	—	—	5	10	—	—	10	20	—	30	3	—	10	—	15	STG2	2	0.75	19	1.13	29	2.75	70
HU362DF●	600VAC;600VDC	60	B	5	—	—	10	20	—	—	25	50	—	60	5	—	10	—	30	STG4	2	1.25	32	1.75	45	3.00	76

NOTES:

UL LISTED — FILE E2875

SUITABLE FOR USE AS SERVICE EQUIPMENT.

◆ FOR DC RATING, USE LEFT AND RIGHT SWITCHING POLES.

■ FOR SINGLE PHASE USE LEFT AND RIGHT SWITCHING POLES.

SHORT CIRCUIT CURRENT RATINGS:

▲ 10,000 AMPERES WITH CLASS H OR K FUSES. 200,000 AMPERES WITH CLASS J OR R FUSES.

● 10,000 AMPERES WHEN PROTECTED BY CLASS H OR K FUSES RATED 100 AMPERES MAXIMUM.

● 200,000 AMPERES WHEN PROTECTED BY CLASS J OR R FUSES RATED 100 AMPERES MAXIMUM.

‡ LUGS SUITABLE FOR 60°C AND 75°C ALUMINUM OR COPPER CONDUCTORS.

HEAVY SAFETY SWITCHES
VISIBLE BLADE TYPE
30–200 AMPERE
ENCLOSURE — NEMA TYPE 4X
FIBERGLASS REINFORCED POLYESTER

SQUARE D
Schneider Electric

DWG# 2531
NO.