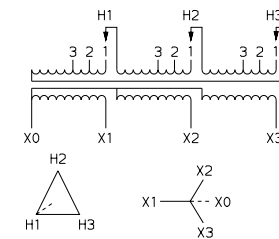
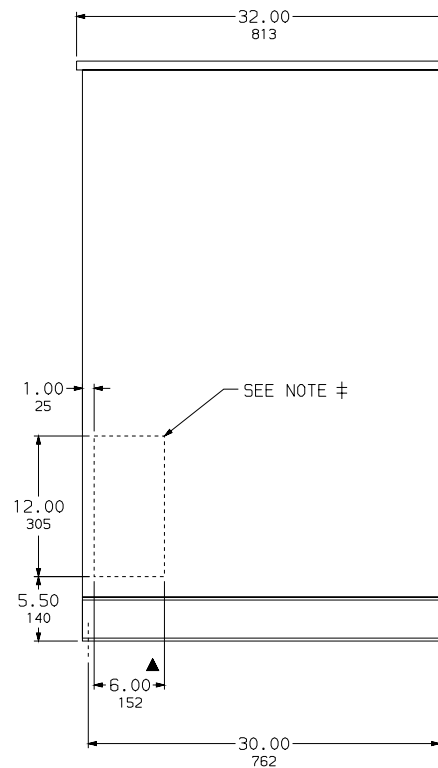
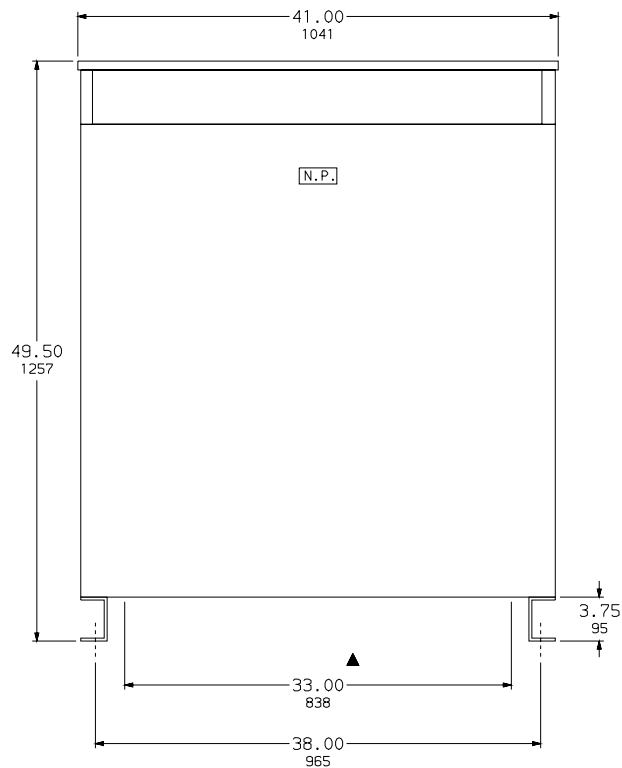


DRY-TYPE DRIVE ISOLATION TRANSFORMERS
175-330 KVA 3Ø 60HZ
460V DELTA PRIMARY



IN EACH PHASE CONNECT TO TAP	
PRIMARY VOLTS	1-5% FCAN 1-5% FCBN
483	1
460	2
437	3

ENCLOSURE
MOUNTING
HOLES
.63
16

DUAL DIMENSIONS: INCHES
MILLIMETERS

KVA	CATALOG NUMBER		GUAR. SOUND LEVEL	WGT. LBS	AVG % Z
	230Y SECONDARY	460Y SECONDARY			
175	175T144HD1T	175T145HD1T	55 DB	1385	4.9
220	220T144HD1T	220T145HD1T	55 DB	1400	5.4
275	275T144HD1T	275T145HD1T	55 DB	1560	5.7
330	330T144HD1T	330T145HD1T	60 DB	1750	5.6

NOTES:
UL LISTED
NEMA 2 VENTILATED ENCLOSURE
MINIMUM CLEARANCE OF 6.00 IN/152 MM MUST BE MAINTAINED
BETWEEN VENT OPENINGS AND OTHER OBSTRUCTIONS.
ALUMINUM WOUND
USE WEATHERSHIELD CAT WS382 FOR NEMA 3R OUTDOOR USE
220°C INSULATION SYSTEM FOR 150°C RISE
▲ SPACE AVAILABLE IN BOTTOM FOR CUSTOMERS CONDUIT ENTRANCE.
‡ SPACE AVAILABLE ON BOTH ENDS FOR CUSTOMERS CONDUIT.

DRY-TYPE DRIVE ISOLATION TRANSFORMERS
175-330 KVA 3Ø 60HZ
460V DELTA PRIMARY

SQUARE D COMPANY

DWG. NO. 3688