



Main

Product	Single Throw Safety Switch
Duty Rating	Heavy duty
Device Application	Heavy application
Disconnect Type	Non-fusible disconnect
Factory Installed Neutral	None
Phase	3 phase
Number of Poles	3
Current Rating	200 A
Voltage Rating	600 V AC/DC
Enclosure Rating	NEMA 1 steel
Motor power hp	15 Hp at 240 V AC 50-60 Hz for 1 phase motors 60 Hp at 240 V AC 50-60 Hz for 3 phase motors 50 Hp at 480 V AC 50-60 Hz for 1 phase motors 125 Hp at 480 V AC 50-60 Hz for 3 phase motors 50 Hp at 600 V AC 50-60 Hz for 1 phase motors 150 Hp at 600 V AC 50-60 Hz for 3 phase motors 40 Hp at 250 V DC 50 hp at 600 V DC

Complementary

Mounting Type	Surface
Electrical Connection	Lugs
Wiring configuration	3-wire
Wire Size	AWG 6...250 kcmil copper or aluminium
Tightening torque	275 lbf.in (31.07 N.m) 0.02...0.20 in ² (13.3...127 mm ²) (AWG 6...250 kcmil)
Depth	8.25 in (209.55 mm)
Width	18.5 in (469.90 mm)
Height	29 in (736.60 mm)
Net Weight	52.01 lb(US) (23.59 kg)

Environment

Certifications	UL listed file E2875
----------------	----------------------

Ordering and shipping details

Category	00008-H&HU SW,2&3P,N1,30-200A
Discount Schedule	DE1
GTIN	785901505860
Returnability	No
Country of origin	US

Packing Units

Unit Type of Package 1	PCE
Number of Units in Package 1	1
Package 1 Height	8.20 in (20.828 cm)
Package 1 Width	19.30 in (49.022 cm)
Package 1 Length	30.70 in (77.978 cm)
Package 1 Weight	43.10 lb(US) (19.55 kg)

Unit Type of Package 2	PAL
Number of Units in Package 2	15
Package 2 Height	45.50 in (115.57 cm)
Package 2 Width	40.00 in (101.6 cm)
Package 2 Length	48.00 in (121.92 cm)
Package 2 Weight	650.00 lb(US) (294.835 kg)

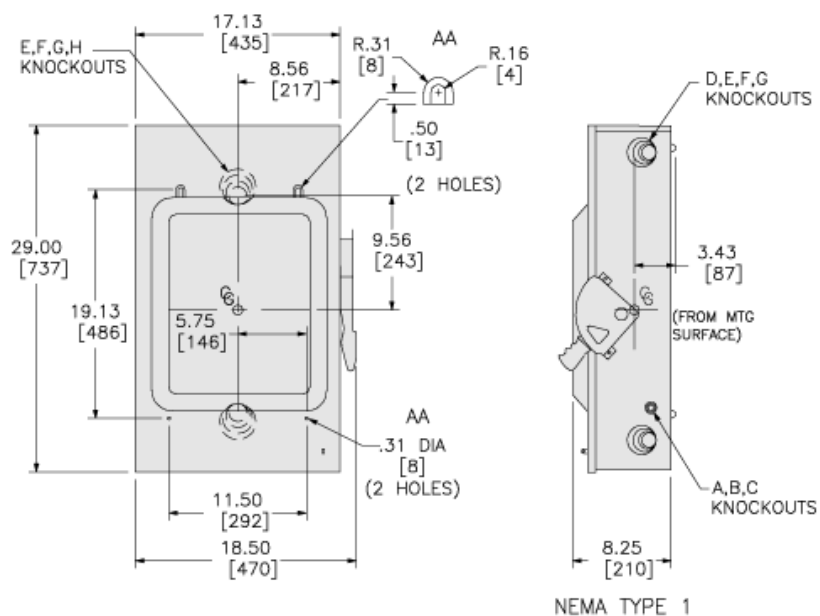
Offer Sustainability

Sustainable offer status	Green Premium product
California proposition 65	WARNING: This product can expose you to chemicals including: Lead and lead compounds, which is known to the State of California to cause cancer and birth defects or other reproductive harm. For more information go to www.P65Warnings.ca.gov
REACH Regulation	REACH Declaration
REACH free of SVHC	Yes
EU RoHS Directive	Compliant EU RoHS Declaration
Toxic heavy metal free	Yes
Mercury free	Yes
China RoHS Regulation	China RoHS Declaration
RoHS exemption information	Yes
Environmental Disclosure	Product Environmental Profile
PVC free	Yes

Contractual warranty

Warranty	18 months
----------	-----------

Approximate Dimensions



KNOCKOUTS				
SYMBOL	CONDUIT SIZE		DIAMETER	
	IN	MM	IN	MM
A	.50	13	.88	22
B	.75	19	1.13	29
C	1.00	25	1.38	35
D	1.25	32	1.75	45
E	1.50	38	2.00	51
F	2.00	51	2.50	64
G	2.50	64	3.00	76
H	3.00	76	3.50	89