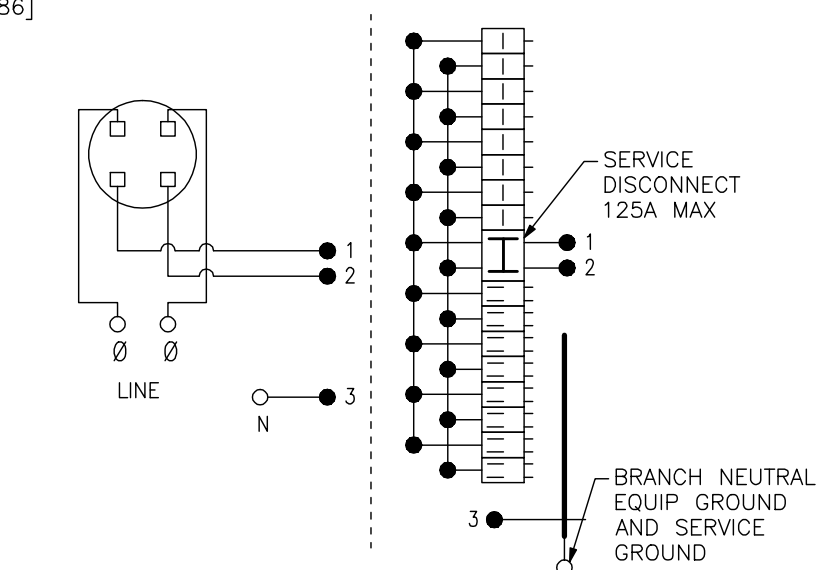


KNOCKOUTS		
SYMBOL	CONDUIT SIZE	
	IN	MM
A	.50	13
B	.75	19
C	1.00	25
D	1.25	32
E	1.50	38
F	2.00	51
G	2.50	64

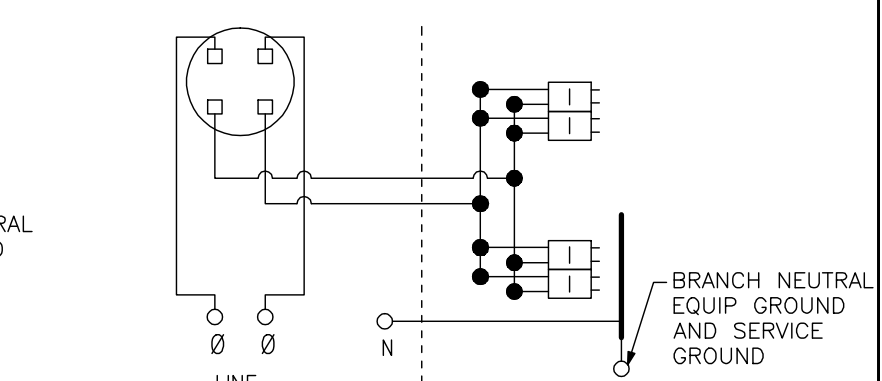


TWO SINGLE POLE, ONE PLUG-ON SPACE TYPE HOMT OR ONE SINGLE POLE, ONE PLUG-ON SPACE TYPE HOM. TWO POLE TYPE HOM, HOMA OR HOMT MAY PLUG-ON TWO ADJACENT SPACES. BRANCH BREAKER IS LIMITED TO 110A MAX.

ONE SINGLE POLE, ONE PLUG-ON SPACE TYPE HOM ONLY. TWO POLE TYPE HOM OR HOMA MAY PLUG-ON TWO ADJACENT SPACES. BRANCH BREAKER IS LIMITED TO 110A MAX.

A SQUARE D UL LISTED SECONDARY SURGE ARRESTER MAY PLUG ON TWO ADJACENT SPACES. ORDER CATALOG NO. HOM2175SB.

### SC1624M100F SC1624M125F



TWO POLE TYPE HOM AND HOMA ONLY. INSTALL NO MORE THAN FOUR CIRCUIT BREAKERS. CIRCUIT BREAKER IS LIMITED TO 110A MAX.

A SQUARE D UL LISTED SECONDARY SURGE ARRESTER MAY PLUG ON TWO ADJACENT SPACES. ORDER CATALOG NO. HOM2175SB.

### SC8L125F

DUAL DIMENSIONS: INCHES  
MILLIMETERS

AMPERE RATING	FACTORY INSTALLED BYPASS TYPE	SHORT CIRCUIT CURRENT RATING	CATALOG NUMBER	SERIES	SPACES	MAXIMUM NUMBER OF SINGLE POLE HOM CIRCUITS	LINE SIDE PHASE & NEUTRAL LUGS AWG	LARGE BRANCH NEUTRAL AWG
100	NONE	10K	SC1624M100F	M01	16	24	#6-2/0 CU/AL	#6-2/0 CU/AL
125			SC8L125F		8	SEE ABOVE WIRING DIAGRAM		
			SC1624M125F		16	24		

NOTES:  
FINISH — GRAY BAKED ENAMEL POWDER COAT PAINT OVER CLEANED GALVANNEALED STEEL.  
MAXIMUM SYSTEM VOLTAGE: 120/240VAC, 1PH 3W  
UL LISTED — FILE E-6294.  
SUITABLE ONLY FOR USE AS SERVICE EQUIPMENT.  
SUITABLE FOR UNDERGROUND/OVERHEAD SERVICE.  
MEETS EUSERC SPECIFICATIONS.

COMBINATION SERVICE ENTRANCE DEVICES  
RING TYPE  
RAINPROOF NEMA TYPE 3R ENCLOSURE  
SEMIFLUSH ONLY



DWG# 2002  
NO.