



## Main

Product	Single Throw Safety Switch
Duty Rating	Heavy duty
Device Application	Heavy application
Disconnect Type	Fusible disconnect
Factory Installed Neutral	None
Phase	3 phase
Number of Poles	3
Current Rating	200 A
Voltage Rating	600 V AC/DC
Enclosure Rating	NEMA 1 steel
Motor power hp	50 Hp at 480 V AC 50-60 Hz for 3 phase motors 125 Hp at 480 V AC 50-60 Hz for 3 phase motors 60 Hp at 600 V AC 50-60 Hz for 3 phase motors 150 Hp at 600 V AC 50-60 Hz for 3 phase motors 40 Hp at 250 V DC 50 hp at 600 V DC

## Complementary

Short Circuit Current Rating	10 KA H or K 200 kA R or J
Fuse type	H or K R or J
Mounting Type	Surface
Electrical Connection	Lugs
Wiring configuration	3-wire
Wire Size	AWG 6...250 kcmil copper or aluminium
Tightening torque	275 lbf.in (31.07 N.m) 0.02...0.20 in <sup>2</sup> (13.3...127 mm <sup>2</sup> ) (AWG 6...250 kcmil)
Depth	8.25 in (209.55 mm)
Width	18.5 in (469.90 mm)
Height	29 in (736.60 mm)
Net Weight	54.50 lb(US) (24.72 kg)

## Environment

Certifications	UL listed file E2875
----------------	----------------------

## Ordering and shipping details

Category	00008-H&HU SW,2&3P,N1,30-200A
Discount Schedule	DE1
GTIN	785901482314
Returnability	Yes
Country of origin	US

## Packing Units

Unit Type of Package 1	PCE
Number of Units in Package 1	1
Package 1 Height	8.30 in (21.082 cm)
Package 1 Width	19.30 in (49.022 cm)
Package 1 Length	30.80 in (78.232 cm)
Package 1 Weight	44.80 lb(US) (20.321 kg)
Unit Type of Package 2	PAL
Number of Units in Package 2	15
Package 2 Height	46.00 in (116.84 cm)
Package 2 Width	40.00 in (101.6 cm)
Package 2 Length	48.00 in (121.92 cm)
Package 2 Weight	690.00 lb(US) (312.978 kg)

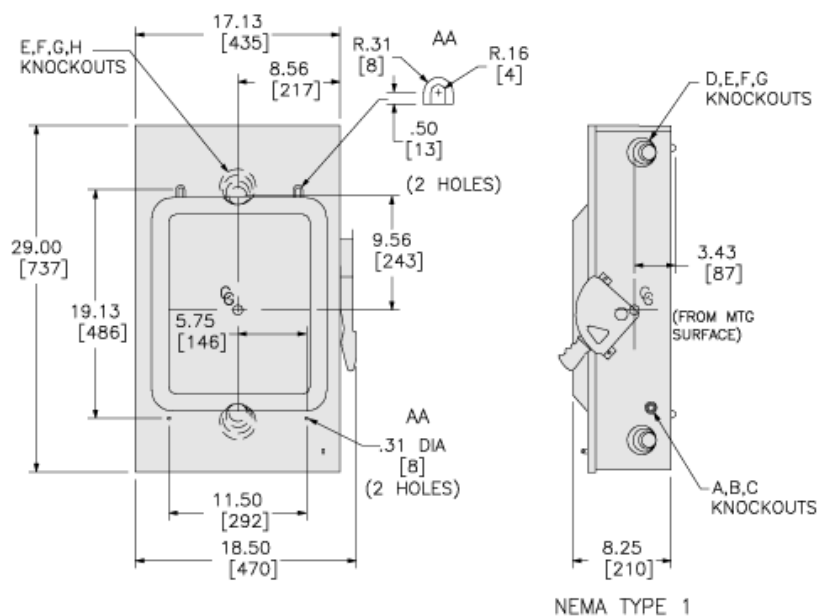
## Offer Sustainability

Sustainable offer status	Green Premium product
California proposition 65	WARNING: This product can expose you to chemicals including: Lead and lead compounds, which is known to the State of California to cause cancer and birth defects or other reproductive harm. For more information go to <a href="http://www.P65Warnings.ca.gov">www.P65Warnings.ca.gov</a>
REACH Regulation	<a href="#">REACH Declaration</a>
REACH free of SVHC	Yes
EU RoHS Directive	Compliant <a href="#">EU RoHS Declaration</a>
Toxic heavy metal free	Yes
Mercury free	Yes
China RoHS Regulation	<a href="#">China RoHS Declaration</a>
RoHS exemption information	<a href="#">Yes</a>
Environmental Disclosure	<a href="#">Product Environmental Profile</a>
WEEE	The product must be disposed on European Union markets following specific waste collection and never end up in rubbish bins.
PVC free	Yes

## Contractual warranty

Warranty	18 months
----------	-----------

## Approximate Dimensions



KNOCKOUTS				
SYMBOL	CONDUIT SIZE		DIAMETER	
	IN	MM	IN	MM
A	.50	13	.88	22
B	.75	19	1.13	29
C	1.00	25	1.38	35
D	1.25	32	1.75	45
E	1.50	38	2.00	51
F	2.00	51	2.50	64
G	2.50	64	3.00	76
H	3.00	76	3.50	89