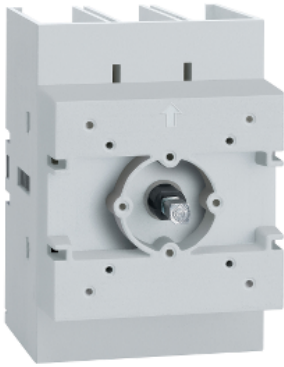


# Product data sheet

Specifications



Disconnect switch, TeSys VLS, body switch, 80A, 40HP at 480VAC, UL98, three phase, 50kA SCCR, size 2, door mount

VLS3P080D2

**Product availability : Stock - Normally stocked in distribution facility**

**Price\* : 129.45 USD**

## Main

Range	TeSys
Product Name	TeSys VARIO LS
Device Short Name	VLS3P
Product Type	Switch body

## Complementary

Mounting Support	Door
Performance Level	High performance
Number of Poles	3P
Contact Type and Composition	3 NO
Color	Gray
[Ue] UL Rated Operational Voltage	600 V AC 50/60 Hz UL 508
Network type	AC
Network frequency	50/60 Hz
UL Maxium Horsepower Ratings	25 hp 200/208 V AC 25 hp 240 V AC 40 hp 480 V AC 40 hp 600 V AC 3 hp 120 V AC 10 hp 240 V AC
[Ue] IEC Rated Operational Voltage	690 V AC 50/60 Hz
IEC Rated Operational Power in W	45 kW 400 V AC-23A) 45 kW 500 V AC-23A) 45 kW 690 V AC-23A)
[Ie] Rated Operational Current	100 A Ue: 600 V UL98 80 A AC-21A Ue: 400 V 80 A AC-21A Ue: 500 V 80 A AC-21A Ue: 690 V 80 A AC-22A Ue: 400 V 80 A AC-22A Ue: 500 V 80 A AC-22A Ue: 690 V 80 A AC-23A Ue: 400 V 63 A AC-23A Ue: 500 V 47 A AC-23A Ue: 690 V

\* Price is "List Price" and may be subject to a trade discount – check with your local distributor or retailer for actual price.

<b>[Ith] Conventional Free Air Thermal Current</b>	80 A 131 °F (55 °C)
<b>[Ithe] Conventional Enclosed Thermal Current</b>	80 A
<b>Making capacity ( I Rms)</b>	120 A 690 V AC-21A 800 A 690 V AC-23A 240 A 690 V AC-22A
<b>Breaking Capacity</b>	120 A 690 V AC-21A) 240 A 690 V AC-22A) 640 A 690 V AC-23A)
<b>SCCR</b>	Fuse J 100 A maximum: 50 kA at 600 V AC
<b>Rated Conditional Short Circuit Current</b>	50 kA 400 V 80 A gG
<b>[Icm] Rated Short Circuit Making Capacity</b>	3550 A 690 V
<b>Intermittent duty class</b>	Class 120 - 60 %
<b>[Uimp] rated impulse withstand voltage</b>	8 kV
<b>[Icw] rated short-time withstand Rms current</b>	2500 A 690 V 1 s
<b>Mechanical Durability</b>	30000 cycles
<b>Electrical Durability</b>	30000 cycles AC-21
<b>UL Wire Size</b>	AWG 12...AWG 1 copper
<b>IEC Terminal Connection</b>	Power circuit screw clamp terminals 0.08 in <sup>2</sup> (50 mm <sup>2</sup> ) solid Power circuit screw clamp terminals 0.11 in <sup>2</sup> (70 mm <sup>2</sup> ) flexible - without cable end
<b>Tightening Torque</b>	Power circuit 44.25...53.10 lbf.in (5...6 N.m) screw clamp terminals
<b>Height</b>	2.76 in (70 mm)
<b>Width</b>	2.76 in (70 mm)
<b>Depth</b>	3.94 in (100 mm)
<b>Product Weight</b>	0.80 lb(US) (0.365 kg)

## Environment

<b>Standards</b>	UL98 CSA C22.2 No 4 IEC 60947-3
<b>Product Certifications</b>	cULus GL
<b>Degree of Protection</b>	IP20 conforming to IEC 60529
<b>Mechanical Robustness</b>	Vibrations 2...100 Hz Fc 0.7 g) IEC 60068-2-6 Shocks 11 ms Ea 15 gn) IEC 60068-2-27
<b>Ambient Air Temperature for Operation</b>	-13...131 °F (-25...55 °C)
<b>Fire Resistance</b>	1760 °F (960 °C) IEC 60695-2-11

## Ordering and shipping details

<b>Category</b>	21734-TESYS VLS DISCONNECT SWITCHES
<b>Discount Schedule</b>	CP1
<b>GTIN</b>	3606481156563
<b>Returnability</b>	Yes
<b>Country of origin</b>	IT

## Packing Units

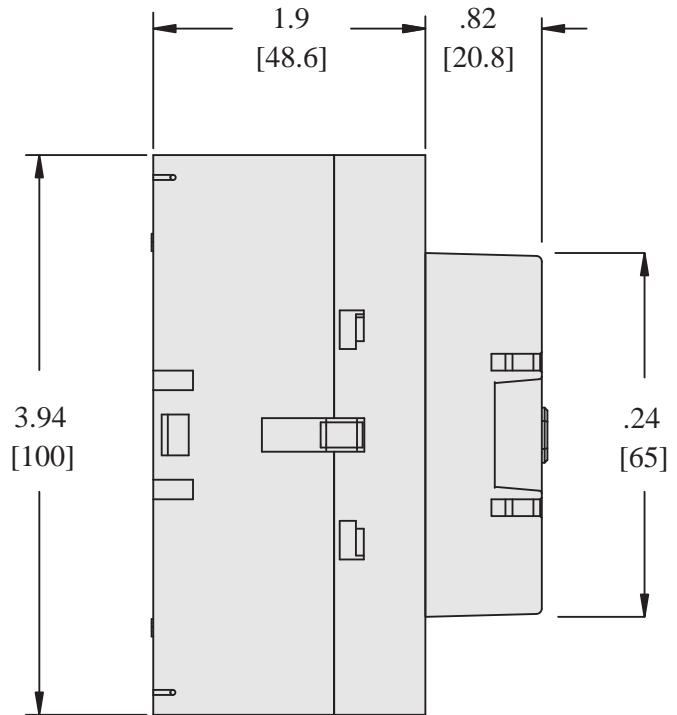
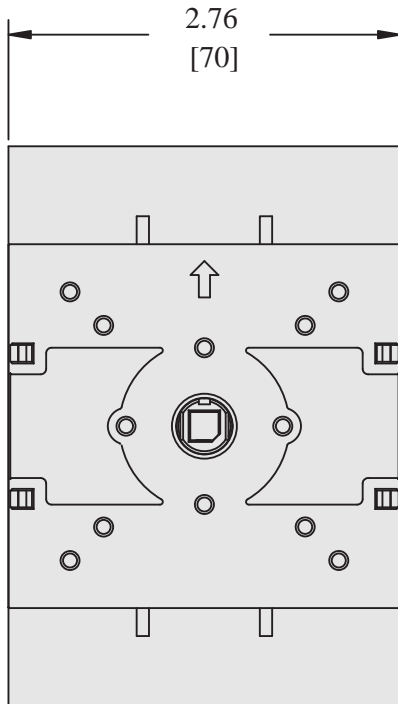
Unit Type of Package 1	PCE
Number of Units in Package 1	1
Package 1 Height	3.15 in (8.0 cm)
Package 1 Width	3.35 in (8.5 cm)
Package 1 Length	4.72 in (12.0 cm)
Package 1 Weight	15.45 oz (438.0 g)
Unit Type of Package 2	S03
Number of Units in Package 2	27
Package 2 Height	11.81 in (30.0 cm)
Package 2 Width	11.81 in (30.0 cm)
Package 2 Length	15.75 in (40.0 cm)
Package 2 Weight	27.64 lb(US) (12.539 kg)

## Offer Sustainability

REACH Regulation	<a href="#">REACH Declaration</a>
REACH free of SVHC	Yes
EU RoHS Directive	Compliant <a href="#">EU RoHS Declaration</a>
Toxic heavy metal free	Yes
Mercury free	Yes
RoHS exemption information	<a href="#">Yes</a>
China RoHS Regulation	<a href="#">China RoHS declaration</a> Pro-active China RoHS declaration (out of China RoHS legal scope)

Dimensions

VLS3P030D2  
VLS3P063D2  
VLS3P080D2  
VLS3P100D2  
VLS3P125D2



in.  
[mm]

ALL DIMENSIONS ARE APPROXIMATE.  
REFER TO TECHNICAL DRAWINGS AND DOCUMENTATION FOR COMPLETE INFORMATION.

Recommended replacement(s)