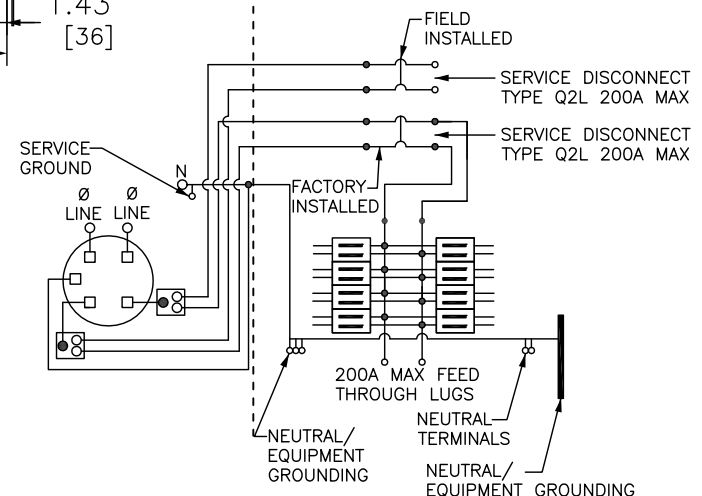


KNOCKOUTS		
SYMBOL	CONDUIT SIZE	
	IN	MM
A	.50	13
B	.75	19
C	1.00	25
D	1.25	32
E	1.50	38
F	2.00	51
G	2.50	64
H	3.00	76
I	3.50	89
J	4.00	102

SHORT CIRCUIT CURRENT RATING					
INTERRUPTING RATING RMS SYMMETRICAL AMPERES @ 240 VAC MAX	SERVICE DISCONNECT		SQUARE D BRANCH CIRCUIT BREAKER		
	CATALOG DESIGNATION	CURRENT RATING AMPERE MAX	CATALOG DESIGNATION	CURRENT RATING AMPERE MAX	
				1 POLE	2 POLE
10,000	QBL	200	HOM HOMT	50 30	200 50
25,000	QDL	200	HOM HOMT	50 30	200 50
65,000	QGL	200	HOM HOMT	50 30	200 50
100,000	QJL	200	HOM HOMT	50 30	200 50



- TWO SINGLE POLE, ONE PLUG-ON SPACE TYPE HOMT OR ONE SINGLE POLE TYPE HOM.
- TWO POLE TYPE HOM OR HOMA (125 MAX) MAY PLUG-ON TWO ADJACENT SPACES.
- TWO POLE TYPE HOMA (150-200A MAX) MAY PLUG-ON FOUR ADJACENT SPACES, ON RIGHT SIDE ONLY.
- ONE SINGLE POLE, ONE PLUG-ON SPACE TYPE HOM ONLY.
- TWO POLE TYPE HOM OR HOMA (125 MAX) MAY PLUG-ON TWO ADJACENT SPACES.
- TWO POLE TYPE HOMA (150-200A MAX) MAY PLUG-ON FOUR ADJACENT SPACES, ON RIGHT SIDE ONLY.

DUAL DIMENSIONS: INCHES
MILLIMETERS

CATALOG NUMBER	SERIES	METER SOCKET CLASS	BYPASS TYPE	MAXIMUM SYSTEM VOLTAGE	AMPERE RATING	SPACES	MAX NUMBER OF SINGLE POLE CIRCUIT	MAIN WIRE SIZE AWG/kCMIL AL/CU
RC816D400SL	M01	CLASS 320 5 JAW	LEVER	120/240 VAC 1Ø3W	400	8	16	4-600 kCMIL CU-AL OR (2) 1/0-350 kCMIL CU-AL

NOTES:
FINISH - GRAY BAKED ENAMEL POWDER COAT PAINT OVER CLEANED GALVANNEALED STEEL.
UL LISTED - FILE E-6294, VOL M
SUITABLE ONLY FOR USE AS SERVICE EQUIPMENT
SUITABLE FOR UNDERGROUND/OVERHEAD SERVICE.
SUPPLIED WITH FEED THROUGH LUGS.

COMBINATION SERVICE ENTRANCE DEVICES
RINGLESS METER MAIN
RAINPROOF NEMA TYPE 3R ENCLOSURE
SURFACE MOUNT ONLY



DWG# NO. RC816D400SL