

6 MOUNTING HOLES TOTAL
(INCLUDES 3 TOP AND 3 BOTTOM)

NEMA TYPE 12/3R
ILLUSTRATED

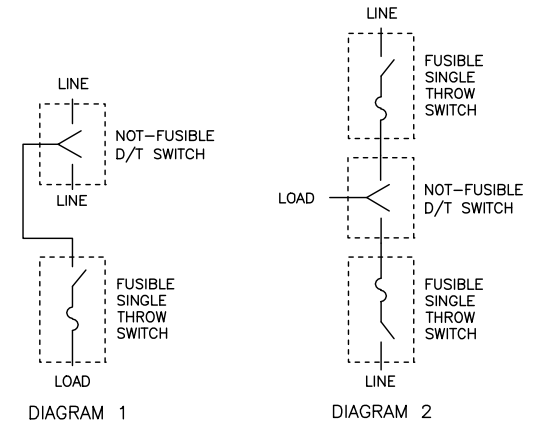
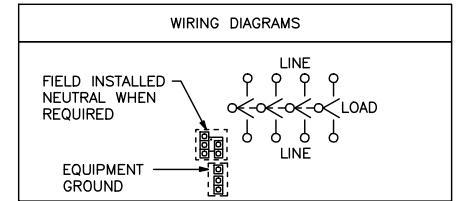


DIAGRAM 1 AND 2 ILLUSTRATE METHODS OF APPLYING
FUSES TO DOUBLE THROW SWITCHES WHEN REQUIRED.

DUAL DIMENSIONS: INCHES
MILLIMETERS

| FIELD INSTALLABLE ACCESSORIES | |
|-------------------------------|-------------|
| NEUTRAL KIT | DT400N |
| ELECTRICAL INTERLOCK | EK400DTU2 |
| EQUIPMENT GROUND | (2) PK0GTA2 |

| CATALOG NUMBER | VOLTAGE RATINGS | TERMINAL LUGS | | |
|----------------|-----------------|---------------|----------------------------------|-------|
| | | AMPERES | WIRE RANGE | TYPE |
| H82445 | 600VAC/250VDC▲ | 400 | (1) 1/0-600 KCMIL OR (2) 1/0-300 | AL/CU |

NOTES:
FINISH - GRAY BAKED ENAMEL.
SHORT CIRCUIT CURRENT RATING:
10,000 AMPERES WHEN PROTECTED BY CLASS H OR K FUSES.
82,000 LINE DEVICES ARE LOAD-MAKE, LOAD-BREAK.
cULus LISTED - FILE E-2875.
SUITABLE FOR USE AS SERVICE EQUIPMENT IN US ONLY.
▲USE LEFT AND RIGHT SWITCHING POLES FOR 250VDC APPLICATION.

DOUBLE THROW SAFETY SWITCHES
400 AMPERE
ENCLOSURE - NEMA TYPE 12/3R INDUSTRIAL



DWG# 3389
NO.