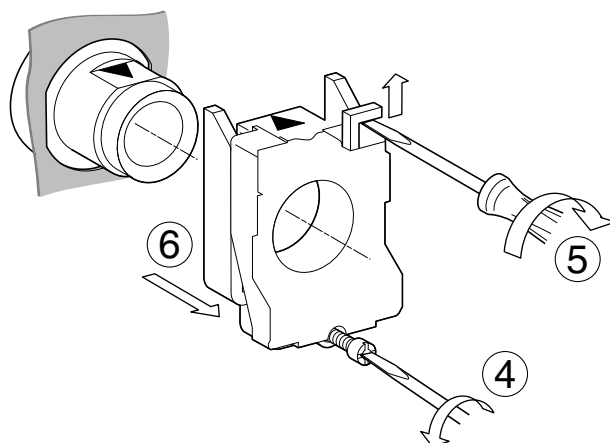
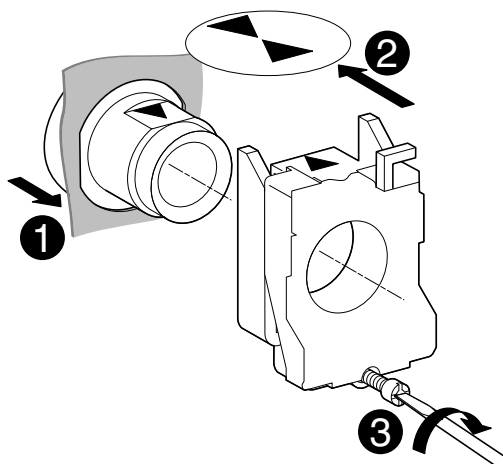
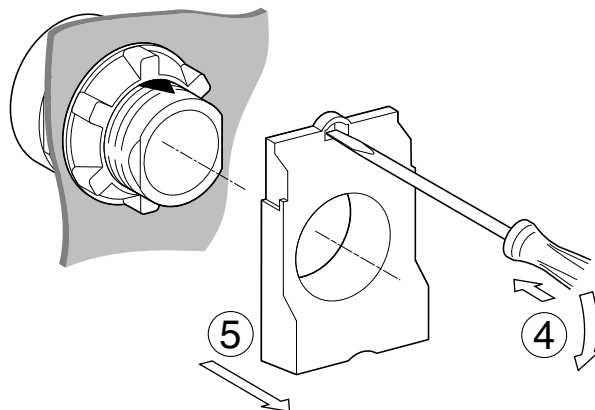
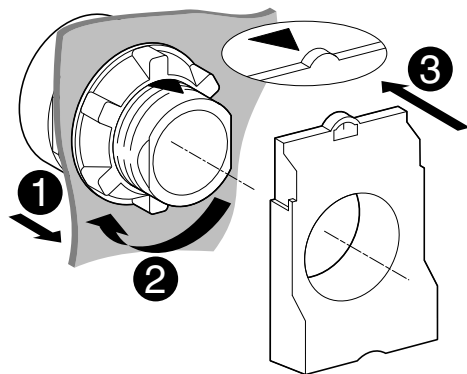


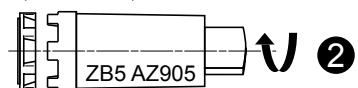
XB4 B●● / ZB4 B●●



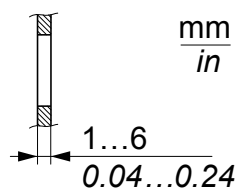
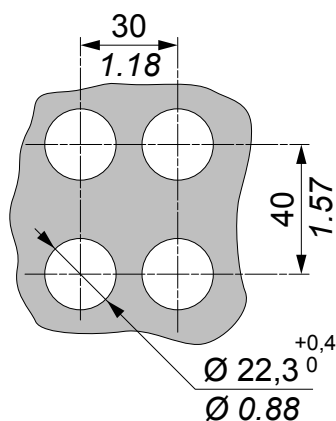
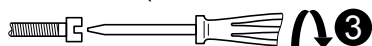
XB5 A●● / ZB5 A●●



XB● ●●● / ZB● ●●●

2,2 Nm $\pm 0,2$ / 19.5 lb-in ± 1.8 

0,8 Nm/7.5 lb-in (maxi 1,2 Nm/10.6 lb-in)

For use on flat surface
of a type 4,4 x, 12 and 13 enclosureFree motion zone
Zone libre de
mouvement
Zona libre del
movimiento