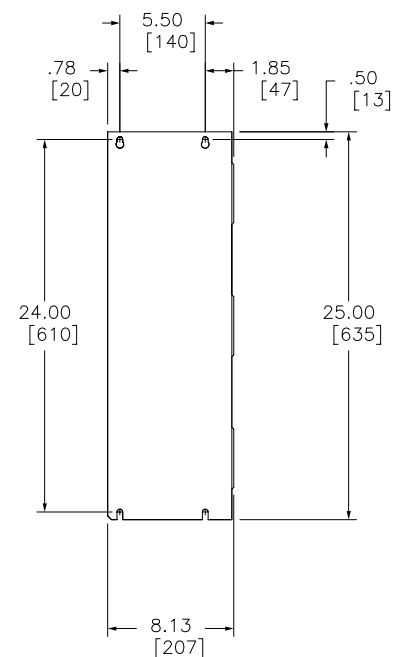
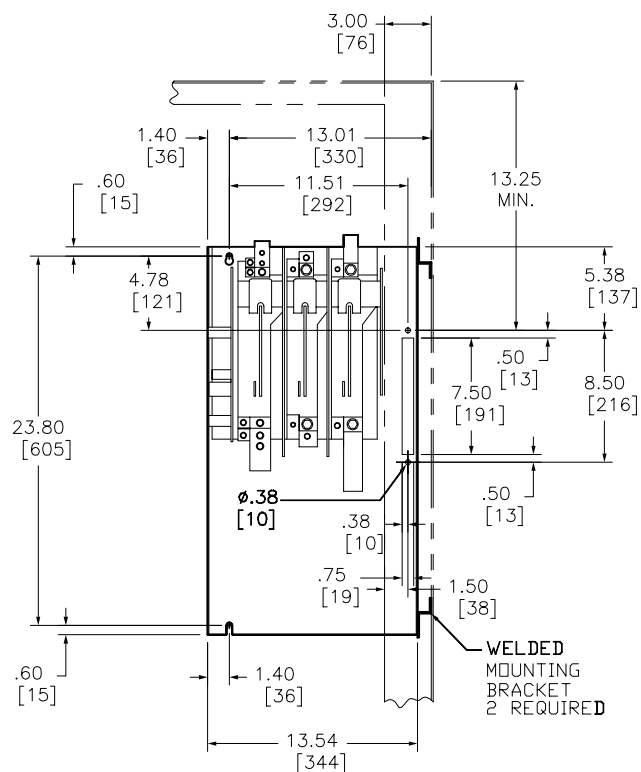


MAXIMUM HORSEPOWER RATINGS				MOUNTING DEPTH
AC SYSTEMS VOLTS (MOTOR VOLTS)				
208 (200)	240 (230)	480 (460)	600 (575)	11.38 IN DEPTH
DC USING 2 POLES 250V MAX.				
75	125	250	350	

MOUNTING DEPTH MEASURED FROM SWITCH
MOUNTING SURFACE TO SURFACE OF FLANGE

OPERATING HANDLES 9422-A5 OR A6 IS TO BE
USED WITH THIS DISCONNECT SWITCH 9422-TG1.

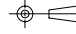
9422-TG1 DISCONNECT SWITCH IS:
NON-FUSIBLE AND FIXED DEPTH.
RIGHT HAND FLANGE MOUNTED ONLY.



Catalog Number: 9422-TG1
Ratings: 400A
UL File/CCN: E52369/WHTY2
CSA File/Class: LR44199/4652 04
Meets Standards: -
Weight: 55 lbs
Wire Size: #4-500 Kcmil Cu
Terminal torque: -
Mounting Hwd: (6) 5/16-18 screws

"THE SQUARE D COMPANY HAS PROPRIETARY RIGHTS TO THE INFORMATION CONTAINED
HEREON. THIS INFORMATION REMAINS THE PROPERTY OF SQUARE D COMPANY AND MAY
BE USED ONLY IN CONFORMANCE WITH INSTRUCTIONS ISSUED BY SQUARE D COMPANY.
USER SHOULD VERIFY DRAWINGS ARE TO THE LATEST/CURRENT REVISION PRIOR
TO INCORPORATING IN A DESIGN FILE."

DO NOT SCALE DRAWING
UNLESS OTHERWISE SPECIFIED DIMENSIONS ARE IN INCHES

THIRD ANGLE
PROJECTION

TOLERANCES
UNLESS OTHERWISE SPECIFIED
2 PLACE DECIMALS ± .01

NON-FUSIBLE DISCONNECT SWITCH
CLASS 9422 TYPE TG1

 **SQUARE D COMPANY**

DWG# 9422 TG_OUTLINE_001
NO.