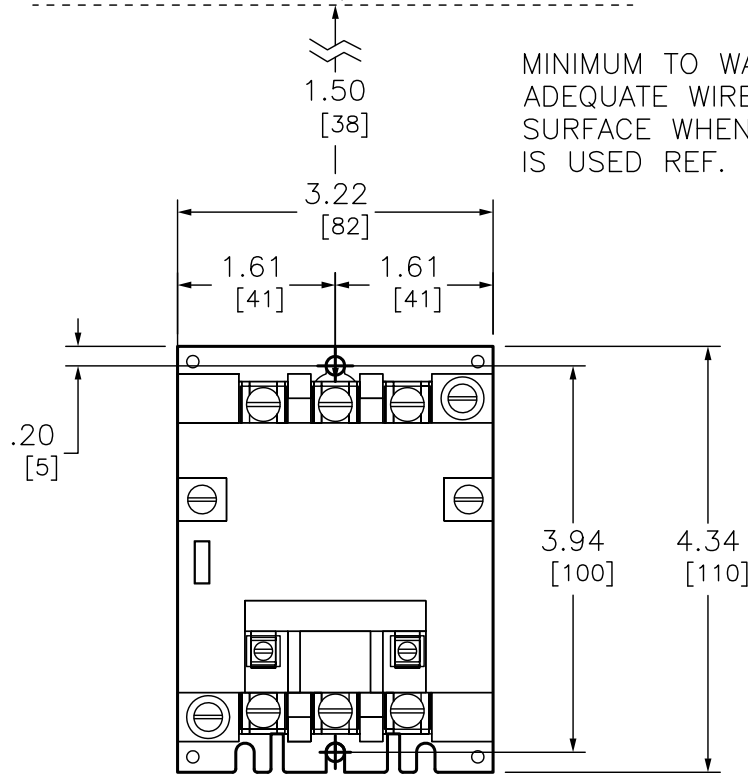


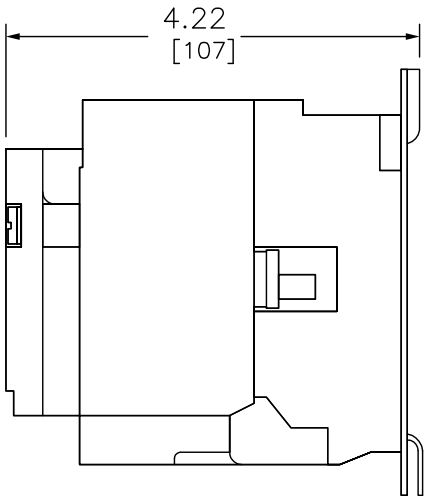
NEMA SIZE 00 CONTACTOR
3-POLE POLYPHASE – 600 VAC, 50-60 HZ

COIL VOLTAGE CODE (1)	VOLTAGE	
	60 HZ	50 HZ
V01	24	—
V02	120	110
V08	208	—
V03	240	220
V06	480	440
V07	600	550
V99	SPECIFY	SPECIFY

ELECTRICAL CLEARANCE / WIRE BENDING SPACE



MINIMUM TO WALL OF BARRIER TO INSURE
ADEQUATE WIRE BENDING SPACE TO LUG
SURFACE WHEN THE MAXIMUM WIRE SIZE
IS USED REF. NEC 430-10



Catalog Number: 8502-SA012(1)
Ratings: SEE CHART
UL File/CCN: E78351/NLDX
CSA File/Class: LR60905-3211 0
Meets Standards: —
Weight: 4.00 LB
Wire Size: POWER – #14-#8, CONTROL – #16-#12
Terminal torque: 20 LB/IN
Mounting Hwd.: (2) #10 screw

DUAL DIMENSIONS: INCHES
MILLIMETERS

CONTACTOR 600VAC 18AMP NEMA + OPTIONS



DWG# 8502SB02V02S
NO.