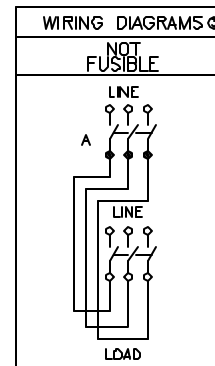


NEMA TYPES 12, 3R OR 5



TERMINAL LUGS			
AMPERES	MAX WIRE	MIN WIRE	TYPE
60	#3 AWG	#12 AWG	AL
60	#3 AWG	#14 AWG	CU
100	#1/D AWG	#12 AWG	AL
100	#1/D AWG	#14 AWG	CU

DUAL DIMENSIONS: INCHES
MILLIMETERS

CATALOG NUMBER	VOLTAGE RATING	AMPERE RATING	WIRING DIAG	120 VAC		240 VAC				CORNER ④ GROUNDED DELTA SYSTEM		480 VAC				CORNER ④ GROUNDED DELTA SYSTEM		600 VAC				125 VDC ②		250 VDC ②		600 VAC ②	
				1PH ①		1PH ①		3PH				1PH ①		3PH				1PH ①		3PH							
				STD	MAX	STD	MAX	STD	MAX	STD	MAX	STD	MAX	STD	MAX	STD	MAX	STD	MAX	STD	MAX	STD	MAX	STD	MAX	STD	MAX
DTU362AWK	600 VAC: 600VDC	60	A	NA	5	NA	10	NA	20	NA	15	NA	25	NA	50	NA	30	NA	30	NA	60	NA	5	NA	10	NA	30
DTU363AWK	600 VAC: 600VDC	100	A	NA	7.5	NA	20	NA	40	NA	40	NA	40	NA	60	NA	75	NA	40	NA	75	NA	7.5	NA	20	NA	50

NOTES:

UL LISTED FILE E-2875

FINISH—GRAY BAKED ENAMEL

SHORT CIRCUIT CURRENT RATING:

10,000 AMPERES WHEN USED IN CONJUNCTION WITH CLASS H OR K FUSES.

200,000 AMPERES WHEN USED IN CONJUNCTION WITH CLASS J OR R FUSES.

① FOR SINGLE PHASE HP RATINGS USE 2 SWITCHING POLES.

② FOR DC RATINGS USE 2 SWITCHING POLES.

③ FIELD CONVERTIBLE TO FEED TWO ALTERNATE LOADS FROM A SINGLE SOURCE.

④ FOR CORNER GROUNDED DELTA SYSTEM, USE 2 SWITCHING POLES AND INSTALL NEUTRAL FOR GROUNDED CONDUCTOR.

DOUBLE THROW SAFETY SWITCHES
VISIBLE BLADES

60-100 AMPERE—SERIES F6

ENCLOSURE — TYPE 12, 3R OR 5

NOT FUSIBLE



SQUARE D COMPANY

DWG# 3198
NO.