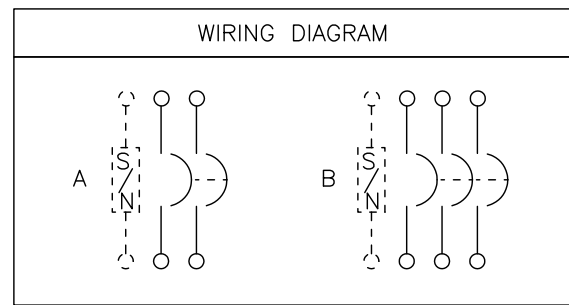
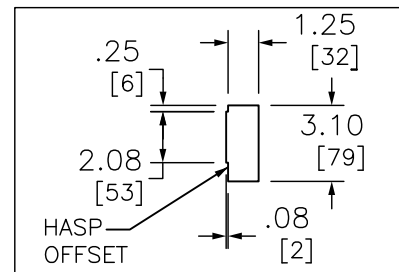


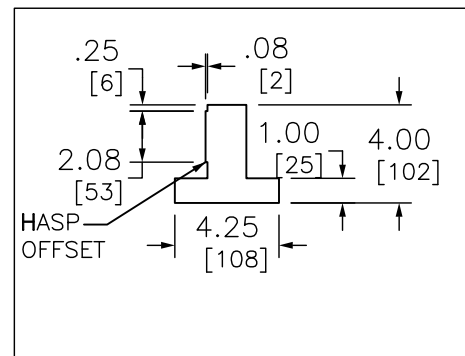
SEISMIC NOTES:
USE (4) 1/4" DIA GRADE 5 STEEL MOUNTING BOLTS @ HOLES AA
MAX CONFIGURED WEIGHT 41 LB FOR THE PURPOSE OF DETERMINING
SEISMIC ANCHORAGE REQUIREMENTS. FOR ALL OTHER APPLICATIONS,
CONTACT SCHNEIDER ELECTRIC.



▲H150 F OR S
J250 F OR S AND CJ250NS
NEMA/EEMAC TYPE 1
CJ250NS



H150 AND CJ250NS COVER OPENING



J250 COVER OPENING
WITH TRIP SETTING ACCESS

KNOCKOUTS				
SYMBOL	CONDUIT SIZE		DIAMETER	
	IN	MM	IN	MM
C	1.00	25	1.38	35
E	1.50	38	2.00	51
F	2.00	51	2.50	64
G	2.50	64	3.00	76
H	3.00	76	3.63	92

CIRCUIT BREAKER TERMINAL LUG DATA					
CIRCUIT BREAKER CATALOG NO. PREFIX	AMPERE RATING	CONDUCTORS PER PHASE	WIRE SIZE (AWG/KCMIL)		TYPE
			MAX	MIN	
HD, HG HJ, HL, HR	15–150	1	#3/0	#14	AL/CU
JD, JG JJ, JL, JR	150–175	1	#4/0	#4	AL/CU
	200–250	1	350	#3/0	

FIELD INSTALLABLE SOLID NEUTRAL ASSEMBLIES AND GROUND KIT						
CATALOG NUMBER	MAXIMUM AMPERE RATING	NUMBER OF TERMINALS	CONDUCTORS PER TERMINAL	WIRE SIZE (AWG/KCMIL)		TYPE
				MAX	MIN	
SN100FA	100A	2	1	#1/0	#14	CU
				#1/0	#12	AL
SN400LA	250A	2	1 OR 2	#600 #250	#1 #1	AL OR CU AL OR CU
		2	1	#300	#4	AL OR CU
PK0GTJ250	250A	2	1	#300	#6	AL OR CU
PK0GTH150	150A	2	1	#2	#14	AL OR CU

FOR 200% NEURALS USE SN400LA (AMP RANGE 100 TO 250, CU WIRE ONLY).

FIELD INSTALLABLE CIRCUIT BREAKER DATA										
CIRCUIT BREAKER CATALOG NO PREFIX	WIRING DIA	AMPERE RATING	UL LISTED INTERRUPTING RATING RMS SYMMETRICAL AMPERES							
			AC VOLTAGE					DC VOLTAGE		
			240	480Y/277	480	600Y/347	600	125	250	500
▲HD	A,B	15–150	25K	18K	18K	14K	14K	20K	20K	–
JD	A,B	150–250	25K	18K	18K	14K	14K	20K	20K	–
▲HG	A,B	15–150	65K	35K	35K	18K	18K	20K	20K	–
JG	A,B	150–250	65K	35K	35K	18K	18K	20K	20K	–
HJ	A,B	15–150	100K	65K	65K	25K	25K	20K	20K	–
JJ	A,B	150–250	100K	65K	65K	25K	25K	20K	20K	–
HL	A,B	15–150	125K	65K	65K	25K	25K	20K	20K	–
JL	A,B	150–250	125K	65K	65K	25K	25K	20K	20K	–
HR	A,B	15–150	125K	65K	65K	25K	25K	20K	20K	–
JR	A,B	150–250	125K	65K	65K	25K	25K	20K	20K	–

NOTES:
FINISH – NEMA/EEMAC TYPE 1 GRAY BAKED ENAMEL ELECTRODEPOSITED OVER CLEANED PHOSPHATIZED STEEL.
cULus LISTED – FILE E-136861
SUITABLE FOR USE AS SERVICE EQUIPMENT WHEN NEUTRAL ASSEMBLY IS INSTALLED. (CJ250NS IN CANADA)
NEUTRAL – INSULATED GROUNDABLE.
CJ250NS IS EQUIPPED WITH SEALING PROVISIONS AND CONTAINS FACTORY INSTALLED AND BONDED SN400LA NEUTRAL
AND IS SUITABLE FOR USE AS SERVICE EQUIPMENT IN CANADA.
*DO NOT USE 2 POLE HD OR HG BREAKERS IN J250F OR S ENCLOSURES.
▲H150F OR H150S SUITABLE ONLY FOR 2 POLE HD OR HG BREAKERS.
ENCLOSURES ACCEPT STANDARD 80% RATED OR 100% RATED CIRCUIT BREAKERS. WHEN USING 100% RATED CIRCUIT
BREAKERS USE ONLY WITH 90°C (MIN) RATED WIRE SIZED PER AMPACITY OF 75°C RATED CONDUCTOR.

DUAL DIMENSIONS: INCHES
MILLIMETERS

CIRCUIT BREAKER ENCLOSURES
15–250 AMPERE
NEMA/EEMAC TYPE 1 GENERAL PURPOSE INDOOR ENCLOSURE
SEISMIC

SQUARE D[™]
by Schneider Electric

DWG# 3362S
NO.