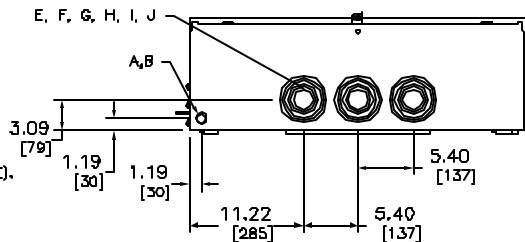
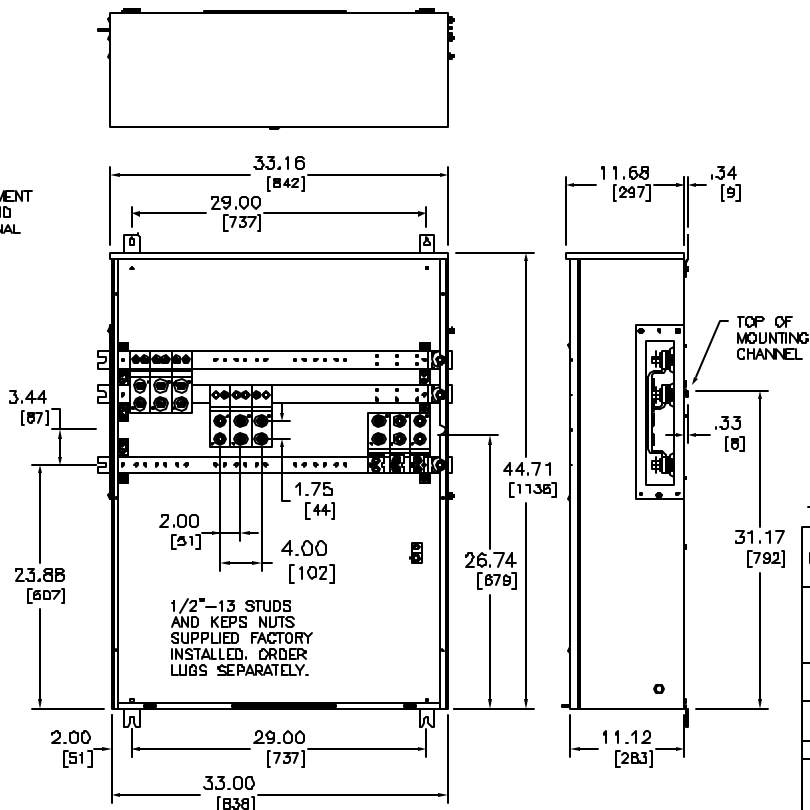


NOTE: SUPPLIED WITH ISOLATED NEUTRAL. NEUTRAL CANNOT BE BONDED.

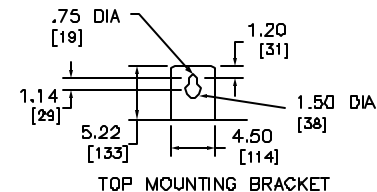
RO	CONDUIT SIZE	RO DIA.
A	.50	.87
B	.75	1.12
E	1.50	2.00
F	2.00	2.50
G	2.50	3.00
H	3.00	3.62
I	3.50	4.12
J	4.00	4.62

FOR METERING EQUIPMENT SHORT CIRCUIT CURRENT RATINGS REFER TO SQUARE D DICEST 173, PAGE 2-9.

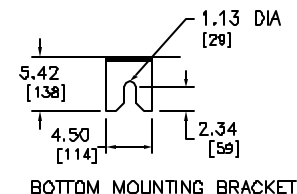
NOTES:
 DEVICE SUPPLIED WITH ALUMINUM CROSS BUS AND CONNECTORS. FOR ALL COPPER CURRENT CARRYING BUSSING ADD SUFFIX "CU" AND ORDER CATALOG NUMBER, EZM31200TBU. SUITABLE FOR BOTTOM FEED ONLY.
 SUITABLE FOR USE ON LINE SIDE OF SERVICE EQUIPMENT
 WHEN USED WITH EZMT BRANCH UNITS (6-DISCONNECT RULE). SUITABLE FOR USE ON LOAD SIDE OF SERVICE EQUIPMENT.
 UL LISTED - FILE E-131840, VOL. M
 MAIN HORIZONTAL CROSS BUS RATED 1200A
 100,000 RMS SYMMETRICAL AMPERES MAXIMUM
 METER CENTER SHORT CIRCUIT CURRENT RATING WITH APPROPRIATE UPSTREAM SERVICE DISCONNECT.
 UNMETERED COMPARTMENTS ARE SEALABLE BY UTILITY. GANGABLE MULTI-METERING EQUIPMENT IS DESIGNED FOR WALL MOUNTING ONLY (NOT SUITABLE FOR USE AS FLOOR STANDING EQUIPMENT).
 FINISH: GRAY BAKED ENAMEL POWDER COAT PAINT OVER CLEANED GALVANNEALED STEEL.



EZM11200TBU



TOP MOUNTING BRACKET



BOTTOM MOUNTING BRACKET

THE FOLLOWING LUGS MAY BE FIELD INSTALLED ON THE LUG LANDING PADS.

MANUFACTURER	CATALOG NUMBER	WIRE RANGE AWG/kcmil	TORQUE (LB-IN)
ANDERSON	VHCL-500-12BN	4/0 - 500 CU	N/A
	VHCL-600-12BN	250 - 600 CU	N/A
	VHCL-750-12BN	600 - 750 CU	N/A
LSC0	L1D2 - 800	#2 - 600 AL-CU	550
	TA-800-2N	#2 - 600 AL-CU	375
	TA-800-2N	300 - 800 AL-CU	500
CMC	L1D2-800	300 - 800 AL-CU	550
	A1B2-600-2	#2 - 600 AL-CU	375
ANDERSON	L1D2 - 800	300 - 800 AL-CU	550
EQUIPMENT GROUND TERMINAL	SUPPLIED FACTORY INSTALLED	#6 - 300 AL-CU	275

1/2"-13 STUDS AND KEPS NUTS SUPPLIED AS MOUNTING HARDWARE FOR LUGS (ORDER LUGS SEPARATELY).

LUG KIT CATALOG NUMBER CMELK4 INCLUDES A QUANTITY OF (4) TA-800-2N, LSC0 LUGS AND IS AVAILABLE FROM SQUARE D.

TYPE VHCL ANDERSON VERSATILE LUGS REQUIRE THE USE OF ANDERSON VERSA-CRIMP TOOL VC6-FT, VC7-FT OR VC8.

SYSTEM TYPE (IN)	SERVICE PROVIDED (OUT)	MAIN BUS RATING	CATALOG NUMBER	EQUIPMENT GROUND WIRE RANGE
1PH-3W 120/240 VAC. MAX.	1PH-3W 120/240 VAC. MAX.	1200 A	EZM11200TBU	#6-300 KCMIL CU #6-300 KCMIL AU

EZ METER-PAK METERING EQUIPMENT
 1200A TERMINAL BOX (UNDERGROUND ONLY)
 1-PHASE, 3-WIRE, 120/240 VAC, NEMA TYPE 3R
 ENCLOSURE, MEETS EUSERC REQUIREMENTS



DWG# 3270
 NO.