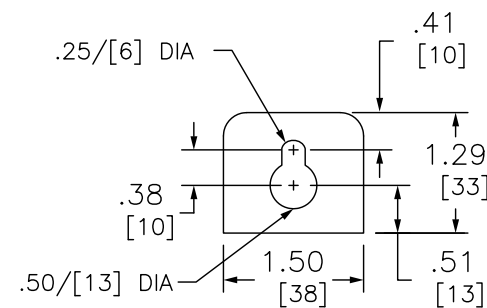
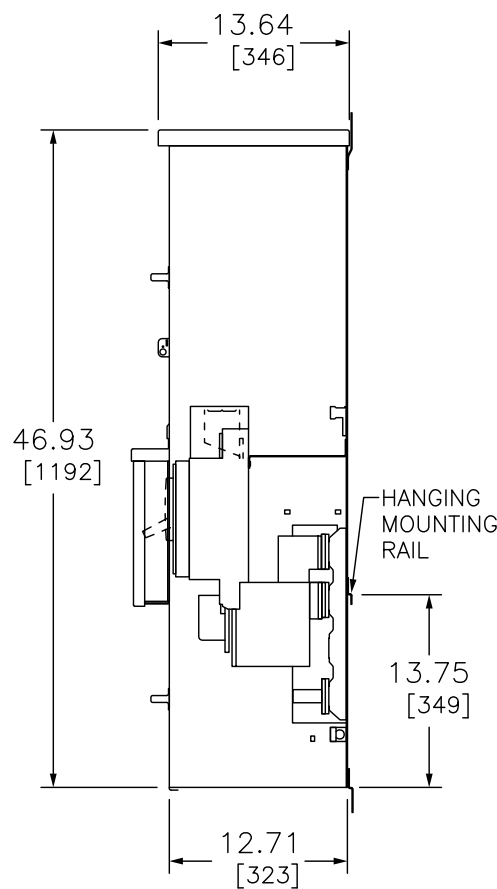
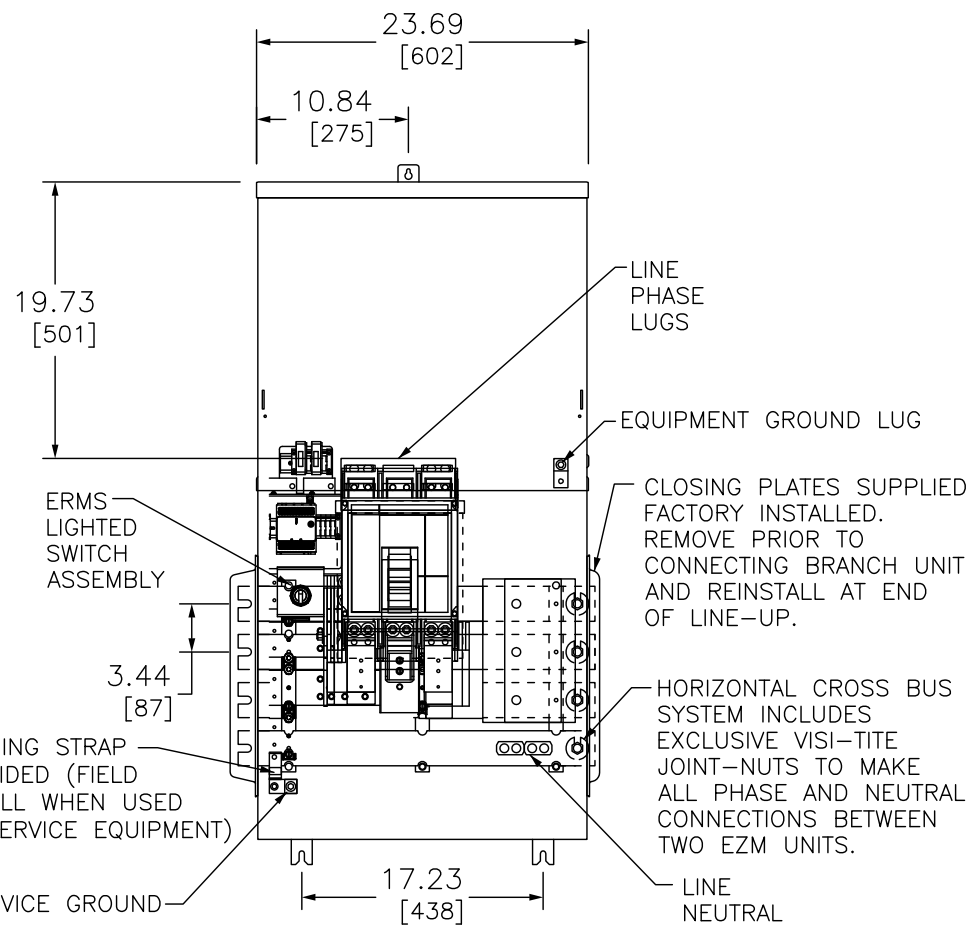
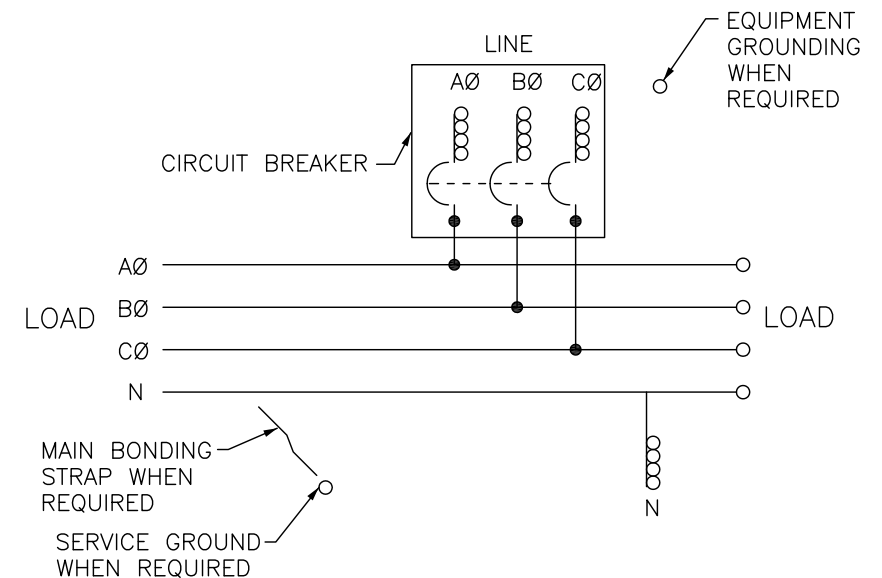
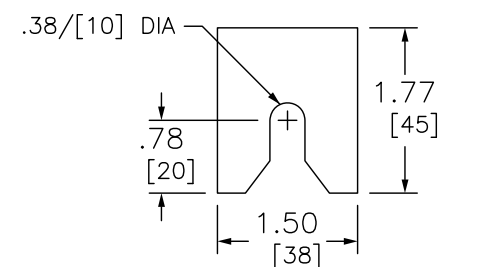


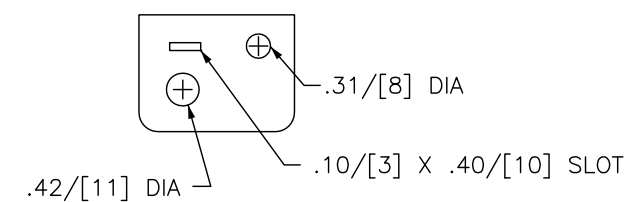
- ADDITIONAL NOTES:
- ◆ ALTERNATE LUG KITS ARE AVAILABLE FOR USE ON LINE SIDE OF MOLDED CASE CIRCUIT BREAKER (REFER TO DIGEST 175, PAGE 7-39).
  - ▼ ALTERNATE NEUTRAL LUG AVAILABLE, ORDER ONE (1)KIT, MMLK250 FOR (1) #1/0 AWG-600 KCML OR (2) #1/0 AWG-250 KCML AL/CU (KIT INCLUDES THREE, 2-BARREL LUGS), NEUTRAL WILL ACCOMMODATE TWO, 2-BARREL LUGS ONLY.



TOP MOUNTING BRACKET



BOTTOM MOUNTING BRACKET



SEAL BRACKET

DUAL DIMENSIONS: INCHES  
MILLIMETERS

NOTES:  
FINISH — GRAY BAKED ENAMEL POWDER COAT PAINT OVER CLEANED GALVANNEALED STEEL.  
UL LISTED — FILE E131840, VOL. M  
SUITABLE FOR USE AS SERVICE EQUIPMENT.  
MAIN HORIZONTAL CROSS BUS RATED AT 1200 AMPERES.  
MAIN DEVICES ARE SEALABLE BY UTILITY.  
GANGABLE MULTI-METERING EQUIPMENT IS DESIGNED FOR WALL MOUNTING ONLY.  
(NOT SUITABLE FOR FLOOR STANDING EQUIPMENT.)  
\*1200A MAIN CIRCUIT BREAKER MUST BE CENTER MOUNTED WHEN USED WITH BRANCH DEVICES WITH MAIN BUS RATED 800A.  
NO USER CONFIGURATION REQUIRED FOR ERMS FUNTION.  
ERMS SWITCH PROVIDED WITH LOCKABLE COVER.  
ERMS MODULE WIRING DIAGRAM AND REPLACEMENT PARTS PROVIDED ON ENCLOSURE DOOR.

SYSTEM TYPE	MAIN RATING (AMPERES)	CATALOG NUMBER	MAIN CIRCUIT BREAKER (FACTORY INSTALLED)	LINE SIDE NEUTRAL LUG WIRE RANGE FOR AL OR CU CONDUCTORS (SUPPLIED WITH BREAKER)	LINE SIDE NEUTRAL LUG WIRE RANGE FOR AL OR CU CONDUCTORS (FACTORY INSTALLED)	GROUND LUG WIRE RANGE (FACTORY INSTALLED)
3Ø4W 208Y/240VAC OR 240/120VAC DELTA	1200	EZM31200GCBTMS	PGM36120U63AE1	(4) 3/0-500◆	(4) 3/0-500▼	(1) #6-300
		EZM31200JCBTMS	PJM36120U63AE1			

EZ METER-PAK GANGABLE  
MULTI-METERING EQUIPMENT  
1200A 3PH 4W MAIN CIRCUIT BREAKER DEVICES  
TOP FEED  
RAINPROOF NEMA TYPE 3R ENCLOSURES

**SQUARE D**™  
by Schneider Electric

DWG# PWFDS-SYTI-0111  
NO.