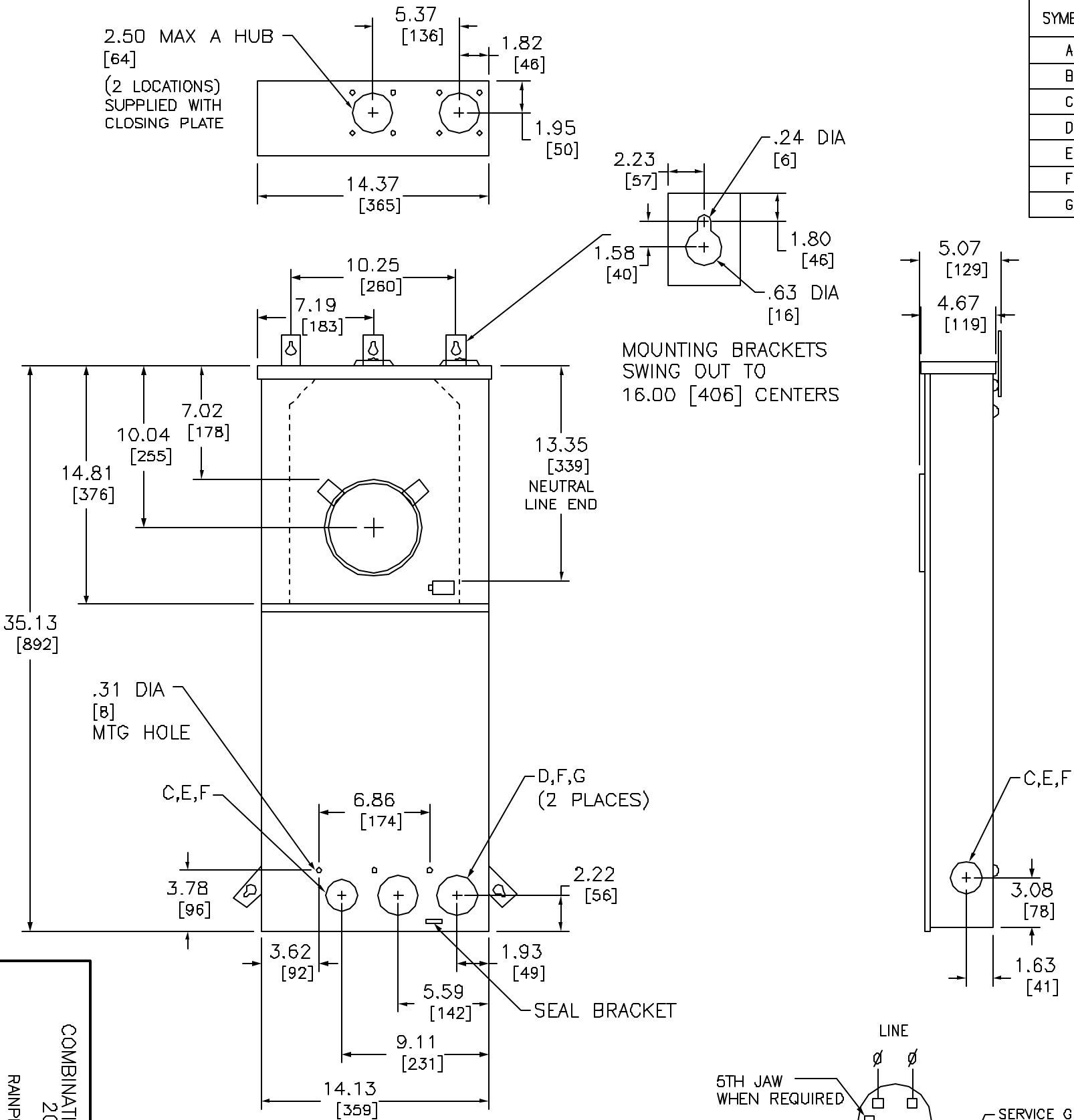
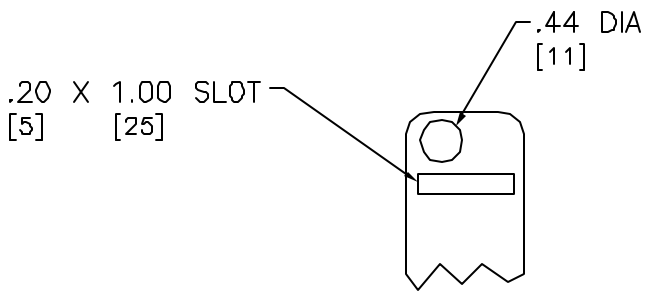
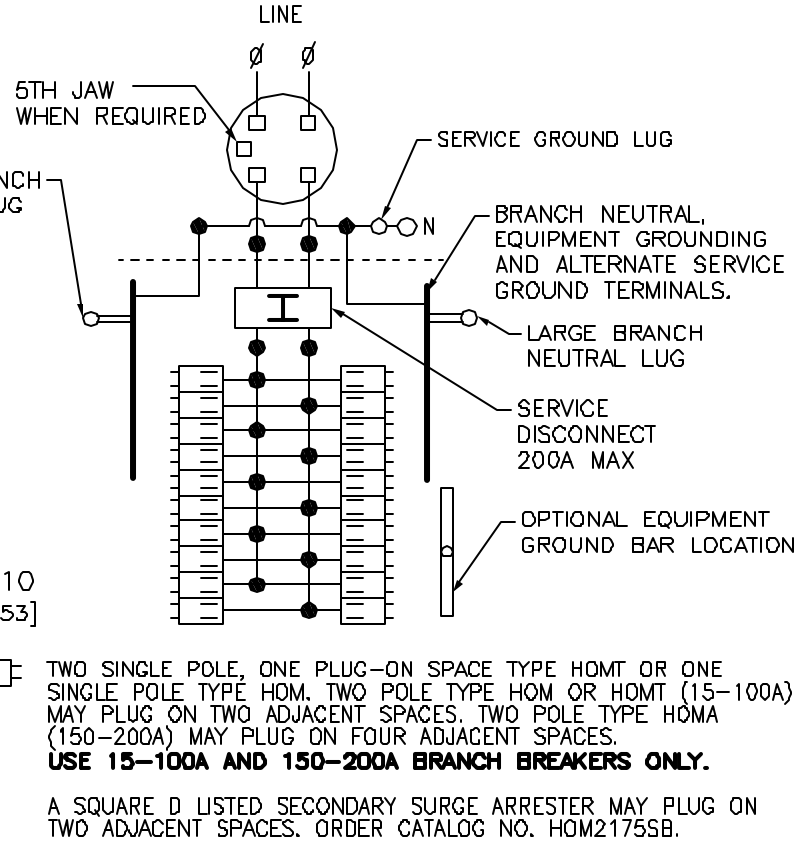
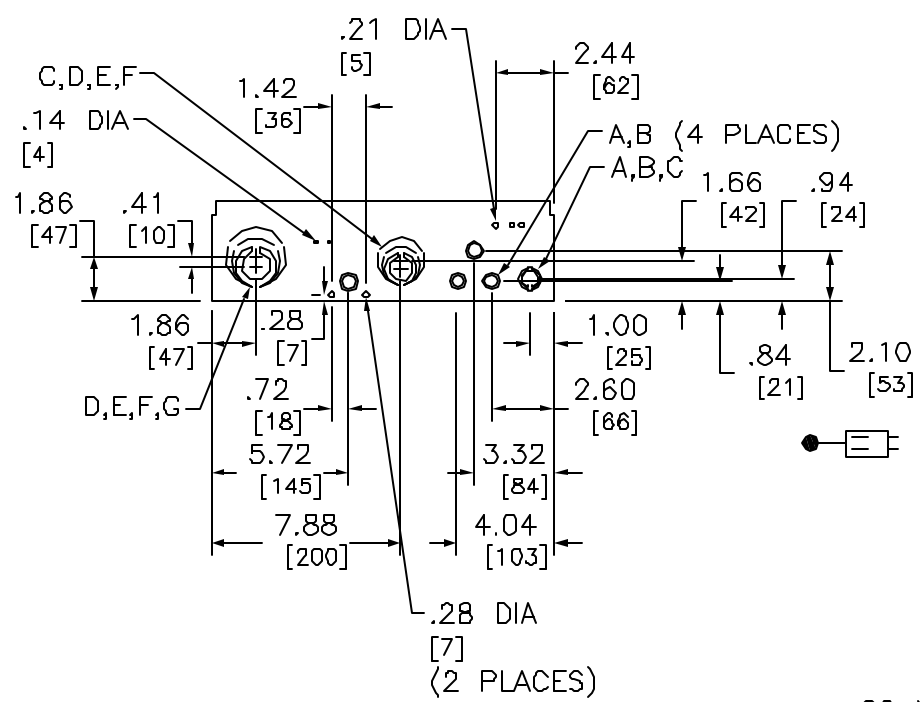


SYMBOL	KNOCKOUTS	
	CONDUIT SIZE	
	IN	MM
A	.50	13
B	.75	19
C	1.00	25
D	1.25	32
E	1.50	38
F	2.00	51
G	2.50	64



COMBINATION SERVICE ENTRANCE DEVICES
200A MAX METER SOCKET
RING TYPE ALL-IN-ONE
RAINPROOF NEMA TYPE 3R ENCLOSURE
SURFACE

DWG# 3143
NO.



SEAL BRACKET

DUAL DIMENSIONS: INCHES
MILLIMETERS

NOTES:
MAXIMUM SYSTEM VOLTAGE: 120/240VAC, 1Ø 3W.
FINISH - UL COMPONENT RECOGNIZED GRAY BAKED ENAMEL
POWDER COAT PAINT OVER CLEANED GALVANNEALED STEEL.
SUITABLE ONLY FOR USE AS SERVICE EQUIPMENT.
UL LISTED - FILE E-6294.
SUITABLE FOR OVERHEAD SERVICE ONLY.

MAINS AMPERE RATING	FACTORY INSTALLED BYPASS TYPE	SHORT CIRCUIT CURRENT RATING	CATALOG NUMBER	SERIES	SPACES	MAXIMUM NUMBER OF SINGLE POLE HOM CIRCUITS	LINE SIDE PHASE & NEUTRAL LUGS AL/CU	SERVICE GROUND LUG AL/CU	LARGE BRANCH NEUTRAL LUGS
200	NONE	22K	SO2040M200S	M01	20	40	#6-350	#8-2/0	#14-1/0 CU #12-1/0 AL