

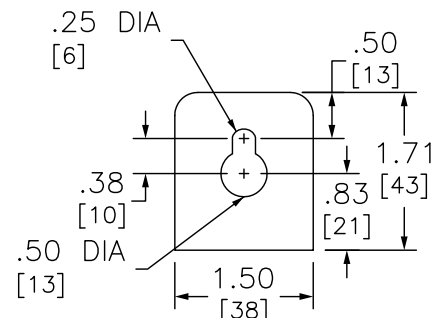
#### ADDITIONAL NOTES:

WHEN USED AS SERVICE EQUIPMENT, INSTALL BONDING STRAP AND REINSTALL GROUND LUG WHERE APPROPRIATE.

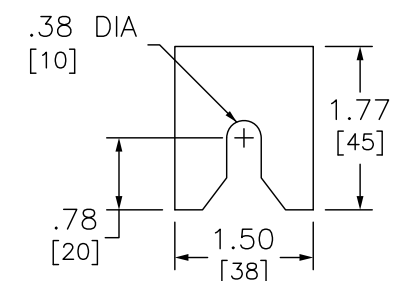
● HANDLE EXTENSION AVAILABLE, ORDER KIT AHXL1, HANDLE IS HINGED, ALLOWING IT TO BE TUCKED UNDER THE DOOR ON THE COVER.

▲ THIS LUG IS AVAILABLE FROM SQUARE D. ORDER CATALOG NUMBER CMELK4, KIT INCLUDES 4 LUGS.

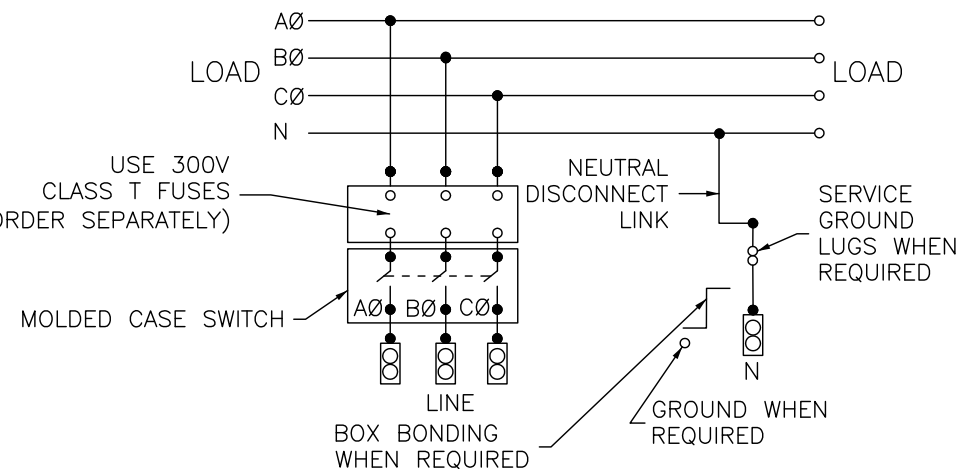
± INDICATED VERSA-CRIMP CRIMPING TOOL.



TOP MOUNTING BRACKET



BOTTOM MOUNTING BRACKET



DUAL DIMENSIONS: INCHES  
MILLIMETERS

ALTERNATE LUG QUANTITY PER LINE SIDE PHASE AND NEUTRAL TERMINALS (ORDER SEPARATELY)									
CATALOG NUMBER	ANDERSON				ILSCO			CMC	
	VHCL-600-12BN	VHCL-750-12BN	VACL-1000-12BN	LID2-600	2ACL-600	TA-600-2N ▲	AU-600-2N (2 BARREL)	A1B2-600-2	2AB2-600 (2 BARREL)
	250-600 CU	500-750 CU	750-1000 AL	#2-600 AL/CU	250-600 AL/CU	#2-600 AL/CU	(2) #2-600 AL/CU	#2-600 AL/CU	(2) #2-600 AL/CU
EZM3400FSU	VC-6±	VC-7±	VC-8±	MECH	IDT-12	MECH	MECH	MECH	MECH

NOTES:  
FINISH - GRAY BAKED ENAMEL POWDER COAT PAINT OVER CLEANED GALVANNEALED STEEL.  
UL LISTED - FILE E-10582, VOL. M, E-131840, VOL. M  
SUITABLE FOR USE AS SERVICE EQUIPMENT.  
MAIN HORIZONTAL CROSS BUS RATED AT 800 AMPERES.  
MAIN DEVICES ARE SEALABLE BY UTILITY.  
GANGABLE MULTI-METERING EQUIPMENT IS DESIGNED FOR WALL MOUNTING ONLY.  
(NOT SUITABLE FOR FLOOR STANDING EQUIPMENT.)

\* MEETS EUSERC STANDARDS FOR WEST COAST BASED UTILITIES.

SYSTEM TYPE	MAIN RATING (AMPERES)	CATALOG NUMBER *	MOLDED CASE SWITCH (FACTORY INSTALLED)	PROVISION TO MOUNT 300V CLASS T FUSES (ORDER SEPARATELY) FUSE RANGE AVAILABLE	LINE PHASE AND NEUTRAL LUG LANDING PADS PROVIDED FOR USE WITH CRIMP-TYPE LUGS(2-HOLE MOUNTING) QUANTITY OF LUGS PER PAD.	GROUND LUG WIRE RANGE (FACTORY INSTALLED)
3Ø 4W 208Y/120VAC OR 240/120VAC DELTA	400	EZM3400FSU	LHF36000M●	225-400A	1(ORDER LUGS SEPARATELY)	(1) #6-300

EZ METER-PAK GANGABLE  
MULTI-METERING EQUIPMENT  
400A 3PH 4W MAIN FUSIBLE SWITCH DEVICES  
UNDERGROUND FEED ONLY  
RAINPROOF NEMA TYPE 3R ENCLOSURE

**SQUARE D**<sup>™</sup>  
by Schneider Electric

DWG# PWFDS-SYRS-0188  
NO.