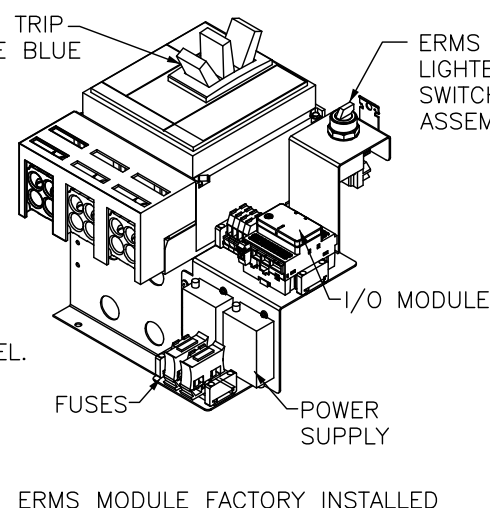
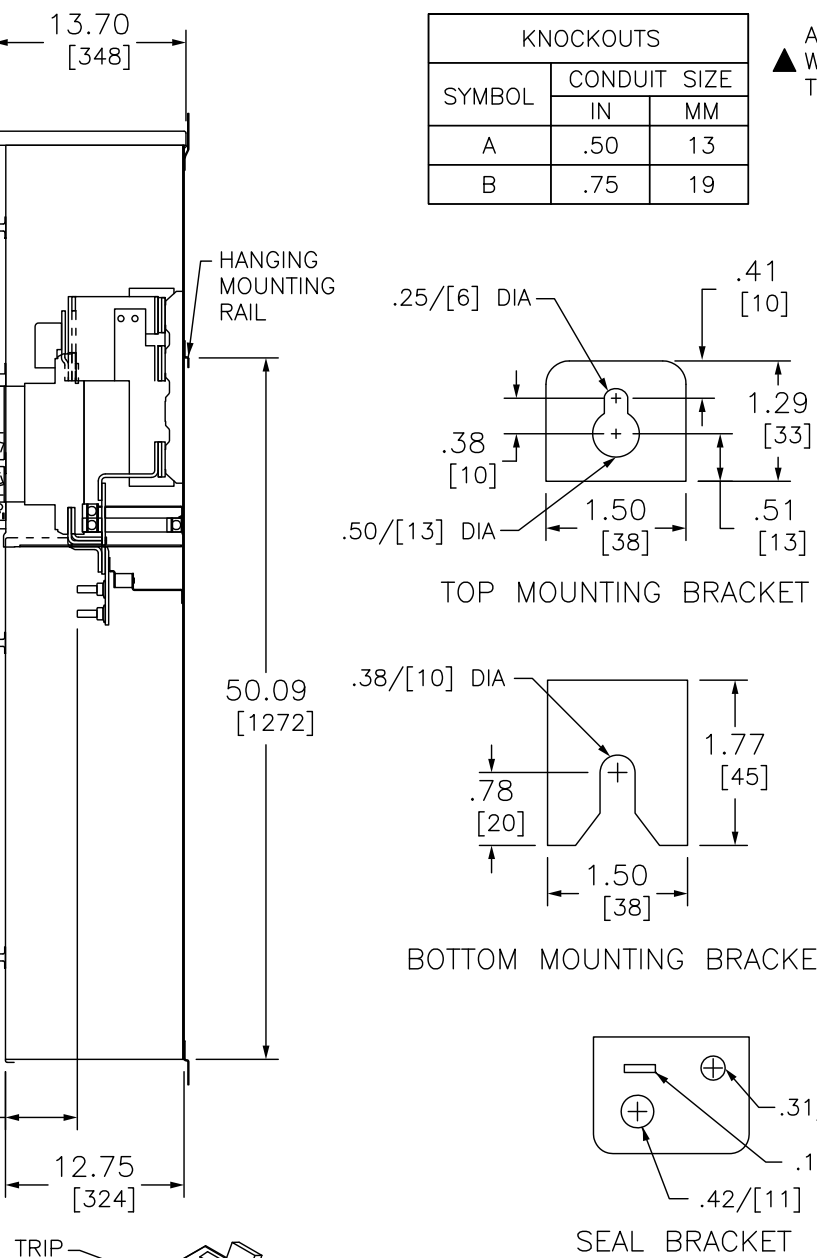


NOTES:
 FINISH — GRAY BAKED ENAMEL POWDER COAT PAINT OVER CLEANED GALVANNEALED STEEL.
 UL LISTED — FILE E131840, VOL. M
 SUITABLE FOR USE AS SERVICE EQUIPMENT.
 MAIN HORIZONTAL CROSS BUS RATED AT 1200 AMPERES.
 MAIN DEVICES ARE SEALABLE BY UTILITY.
 GANGABLE MULTI-METERING EQUIPMENT IS DESIGNED FOR WALL MOUNTING ONLY.
 (NOT SUITABLE FOR FLOOR STANDING EQUIPMENT.)
 *1200A MAIN CIRCUIT BREAKER MUST BE CENTER MOUNTED WHEN USED WITH
 BRANCH DEVICES WITH MAIN BUS RATED 800A.
 MEETS EUSERC STANDARDS FOR WEST COAST BASED UTILITIES.
 NO USER CONFIGURATION REQUIRED FOR ERMS FUNCTION.
 ERMS SWITCH PROVIDED WITH LOCKABLE COVER.
 ERMS MODULE WIRING DIAGRAM AND REPLACEMENT PARTS PROVIDED ON ENCLOSURE DOOR

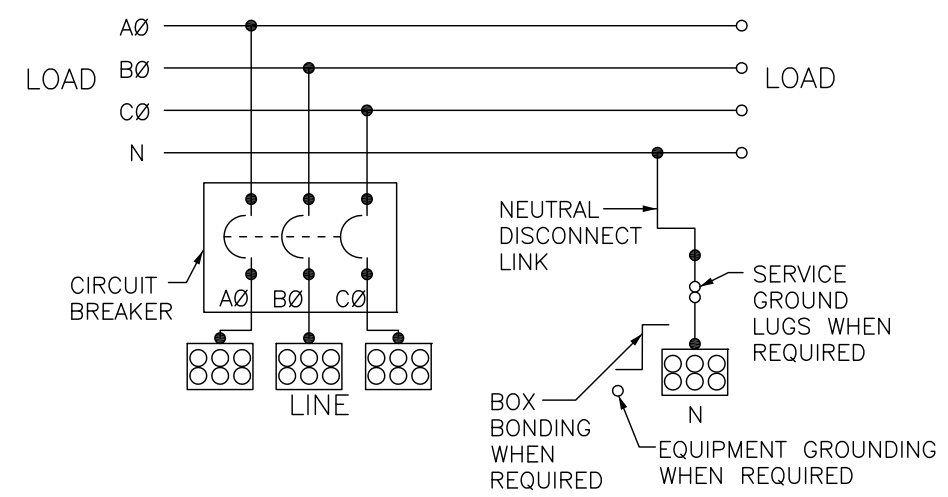


KNOCKOUTS		
SYMBOL	CONDUIT SIZE	
	IN	MM
A	.50	13
B	.75	19

ADDITIONAL NOTES:
 ▲ WHEN USED AS SERVICE EQUIPMENT, INSTALL BONDING STRAP AND DISCARD EQUIPMENT GROUND LUG. THIS LUG IS AVAILABLE FROM SQUARE D. ORDER CATALOG NUMBER CMELK4, KIT INCLUDES 4 LUGS.

THE FOLLOWING LUGS MAY BE INSTALLED ON THE LINE LUG PADS.

MANUFACTURER	CATALOG NUMBER	WIRE RANGE, AWG/KCMIL	CRIMPING TOOL	TORQUE LB-IN
ANDERSON	VHCL50012BN	4/0-500 CU	VC63, VC7, VC6FT, VC7FT	—
ANDERSON	VHCL60012BN	250-600 CU	VC6FT, VC7FT, VC8	—
ANDERSON	VHCL75012BN	500-750 CU	VC6FT, VC7FT, VC8	—
ANDERSON	VACL50012BN	4/0-500 CU-AL	VC63, VC6FT	—
ANDERSON	VACL60012BN	350-600 AL/350-500 CU	VC6FT, VC8	—
ANDERSON	VACL75012BN	500-750 AL/500 CU	VC6FT, VC8	—
ANDERSON	VCEL05012H2	2/0-500 CU-AL	VC63, VC6FT	—
ANDERSON	VCEL06012H2	400-600 AL/400-500 CU	VC6FT	—
ANDERSON	VCEL07512H2	500-750 AL/500 CU	VC6FT	—
ANDERSON	VCELCO5012H2	250-500 CU	VC63, VC7, VC6FT, VC7FT	—
IlSCO	2ACL-600	250-600 CU-AL	IDT-12	—
IlSCO	TA-600-2N ▲	2-600 CU-AL	—	375
IlSCO	TA-800-2N	300-800 CU-AL	—	500
IlSCO	TA-1000-2N	500-1000 CU-AL	—	500
IlSCO	PB2-600-2N	2-600 CU-AL	—	500
CMC	A1B2-600-2	2-600 CU-AL	—	375
CMC	L1D2-600	2-600 CU-AL	—	550
CMC	L1D2-800	300-800 CU-AL	—	550
CMC	L1D2-1000	500-1000 CU-AL	—	550
1/2-13 MOUNTING NUTS FOR LINE LUGS				375



DUAL DIMENSIONS: INCHES
MILLIMETERS

SYSTEM TYPE	MAIN RATING (AMPERES)	CATALOG NUMBER	MAIN CIRCUIT BREAKER (FACTORY INSTALLED)	LINE PHASE AND NEUTRAL LUG LANDING PADS PROVIDED FOR USE WITH CRIMP-TYPE LUGS (2-HOLE MOUNTING) QUANTITY OF LUGS PER PAD	GROUND LUG WIRE RANGE (FACTORY INSTALLED)
3Ø4W 208Y/120VAC OR 240/120VAC DELTA	1200	EZM31200GCBEMS	PGF36120U63AE1	3 (ORDER LUGS SEPARATELY)	(1) #6-300
		EZM31200JCBEMS	PJF36120U63AE1		

EZ METER-PAK GANGABLE
 MULTI-METERING EQUIPMENT
 1200A 3PH 4W MAIN CIRCUIT BREAKER DEVICES
 UNDERGROUND FEED ONLY
 RAINPROOF NEMA TYPE 3R ENCLOSURES

SQUARE D™
 by Schneider Electric

DWG# PWFDS-SYTI-0110
 NO.