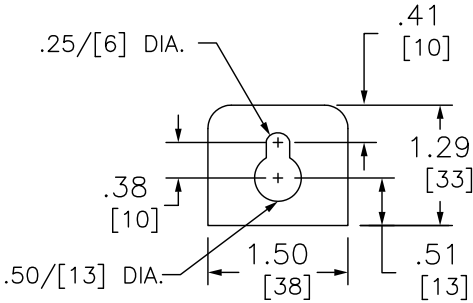


KNOCKOUTS		
SYMBOL	CONDUIT SIZE	
	IN	MM
A	.50	13
B	.75	19

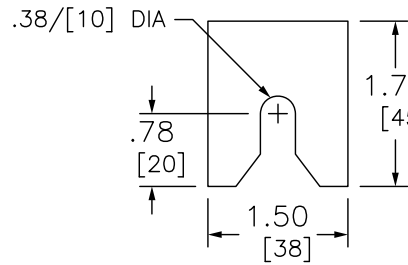
NOTES:
FINISH — GRAY BAKED ENAMEL POWDER COAT PAINT OVER CLEANED GALVANNEALED STEEL.
UL LISTED — FILE E131840, VOL. M
SUITABLE FOR USE AS SERVICE EQUIPMENT.
MAIN HORIZONTAL CROSS BUS RATED AT 1200 AMPERES.
MAIN DEVICES ARE SEALABLE BY UTILITY.
GANGABLE MULTI-METERING EQUIPMENT IS DESIGNED FOR WALL MOUNTING ONLY.
(NOT SUITABLE FOR FLOOR STANDING EQUIPMENT.)
*1200A MAIN CIRCUIT BREAKER MUST BE CENTER MOUNTED WHEN USED WITH BRANCH DEVICES
WITH MAIN BUS RATED 800A.
MEETS EUSERC STANDARDS FOR WEST COAST BASED UTILITIES.

DUAL DIMENSIONS: INCHES
MILLIMETERS

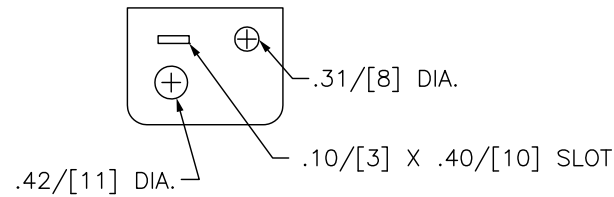
ADDITIONAL NOTES:
WHEN USED AS SERVICE EQUIPMENT, INSTALL BONDING STRAP AND DISCARD EQUIPMENT GROUND LUG.
▲ THIS LUG IS AVAILABLE FROM SQUARE D. ORDER CATALOG NUMBER CMLK4, KIT INCLUDES 4 LUGS.



TOP MOUNTING BRACKET



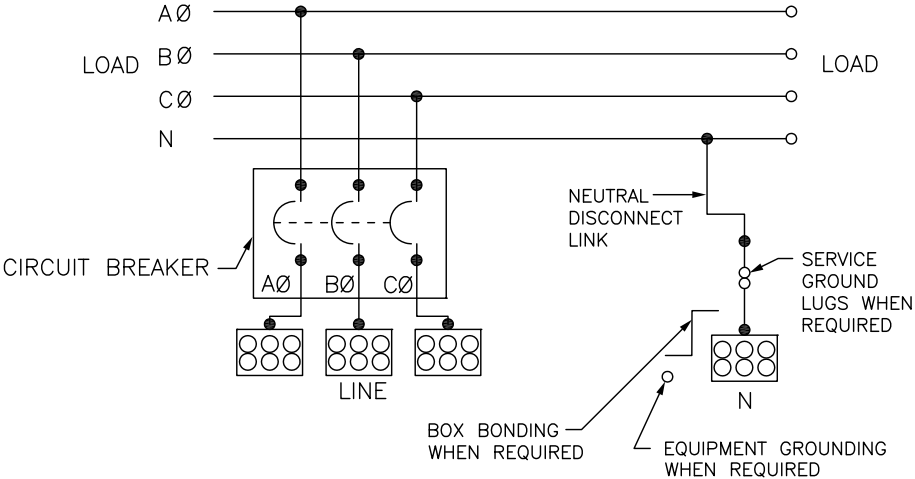
BOTTOM MOUNTING BRACKET



SEAL BRACKET

THE FOLLOWING LUGS MAY BE INSTALLED ON THE LINE LUG PADS.

MANUFACTURER	CATALOG NUMBER	WIRE RANGE, AWG/KCMIL	CRIMPING TOOL	TORQUE LB-IN
ANDERSON	VHCL50012BN	4/0-500 CU	VC63, VC7, VC6FT, VC7FT	-
ANDERSON	VHCL60012BN	250-600 CU	VC6FT, VC7FT, VC8	-
ANDERSON	VHCL75012BN	500-750 CU	VC6FT, VC7FT, VC8	-
ANDERSON	VACL50012BN	4/0-500 CU-AL	VC63, VC6FT	-
ANDERSON	VACL60012BN	350-600 AL/350-500 CU	VC6FT, VC8	-
ANDERSON	VACL75012BN	500-750 AL/500 CU	VC6FT, VC8	-
ANDERSON	VCEL05012H2	2/0-500 CU-AL	VC63, VC6FT	-
ANDERSON	VCEL06012H2	400-600 AL/400-500 CU	VC6FT	-
ANDERSON	VCEL07512H2	500-750 AL/500 CU	VC6FT	-
ANDERSON	VCELC05012H2	250-500 CU	VC63, VC7, VC6FT, VC7FT	-
IlSCO	2ACL-600	250-600 CU-AL	IDT-12	-
IlSCO	TA-600-2N▲	2-600 CU-AL	-	375
IlSCO	TA-800-2N	300-800 CU-AL	-	500
IlSCO	TA-1000-2N	500-1000 CU-AL	-	500
IlSCO	PB2-600-2N	2-600 CU-AL	-	500
CMC	A1B2-600-2	2-600 CU-AL	-	375
CMC	L1D2-600	2-600 CU-AL	-	550
CMC	L1D2-800	300-800 CU-AL	-	550
CMC	L1D2-1000	500-1000 CU-AL	-	550
1/2-13 MOUNTING NUTS FOR LINE LUGS				375



SYSTEM TYPE	MAIN RATING (AMPERES)	CATALOG NUMBER	MAIN CIRCUIT BREAKER (FACTORY INSTALLED)	LINE PHASE AND NEUTRAL LUG LANDING PADS PROVIDED FOR USE WITH CRIMP-TYPE LUGS(2-HOLE MOUNTING) QUANTITY OF LUGS PER PAD.	GROUND LUG WIRE RANGE (FACTORY INSTALLED)
3 Ø 4W 208Y/120VAC OR 240/120VAC DELTA	1000	EZM31000GCBE	PGF36100U31A	3 (ORDER LUGS SEPARATELY)	(1) #6-300
	1000	EZM31000JCBE	PJF36100U31A	3 (ORDER LUGS SEPARATELY)	(1) #6-300
	1200	EZM31200GCBE	PGF36120U31A	3 (ORDER LUGS SEPARATELY)	(1) #6-300
	1200	EZM31200JCBE	PJF36120U31A	3 (ORDER LUGS SEPARATELY)	(1) #6-300

EZ METER-PAK GANGABLE
MULTI-METERING EQUIPMENT
1200A 3PH 4W MAIN CIRCUIT BREAKER DEVICES
UNDERGROUND FEED ONLY
RAINPROOF NEMA TYPE 3R ENCLOSURES

SQUARE D
by Schneider Electric

DWG# PWFDS-SYTI-0030
NO.