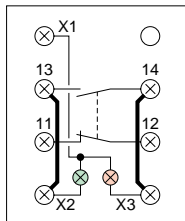
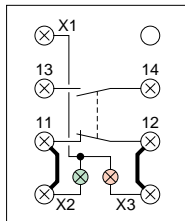


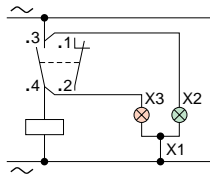
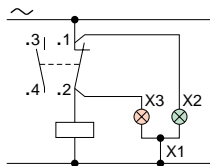
**Corps embrochable**  
**Gehäuse steckbar**  
**Plug-in body**



Fils internes de l'appareil  
 Interne Verdrahtung  
 Internal connections

— Connections à réaliser par le client  
 Vom Kunden zu verdrahten  
 Connections to be made by the user

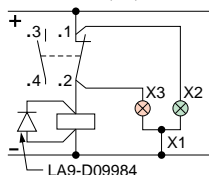
Version Néon  
 Ausführung mit Glimmlampen  
 Neon versions (AC)



X2 : voyant vert  
 grüne Meldeleuchte  
 green light

X3 : voyant orange  
 orange Meldeleuchte  
 orange light

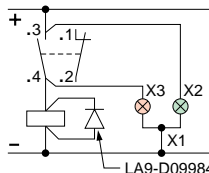
Version DEL / Ausführung mit LED  
 LED versions (AC)



Protégé contre les inversions de fils  
 Schutz gegen Verpolung  
 Incorporating reserve polarity protection

Tenue aux surtensions : < 700V  
 Schutz gegen  
 Spitzenspannungen : < 700V  
 Maximum transient voltage : < 700V

Charges inductives acceptées  
 uniquement avec un amortisseur de  
 surtension. (LA9-D09984)  
 Für induktives Last Spannungsbegrenzer  
 LA9-D09984 vorsehen  
 Where the load is inductive, please fit a  
 suppressor across the load (LA9-D09984)



**Corps fixe**  
**Gehäuse nicht steckbar**  
**Fixed body**

