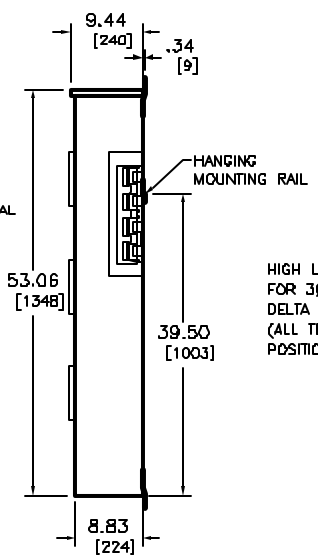
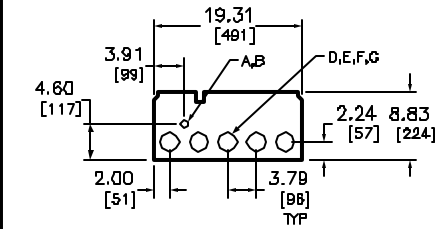


HORIZONTAL CROSS BUS SYSTEM INCLUDES EXCLUSIVE VISI-TITE JOINT-NUTS TO MAKE ALL PHASE AND NEUTRAL CONNECTIONS BETWEEN TWO EZM UNITS.

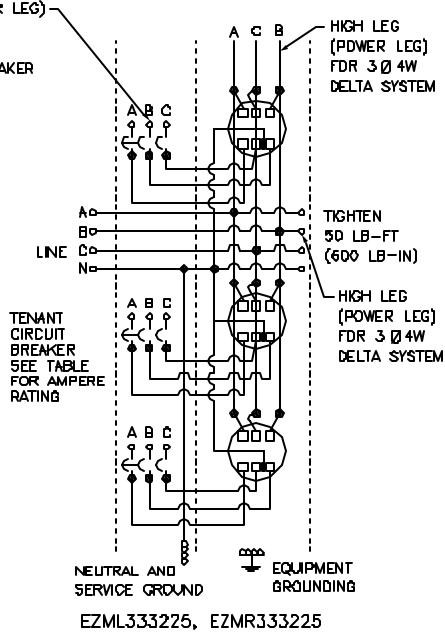
BRANCH UNIT AVAILABLE WITH ALL COPPER BUSSING ADD SUFFIX "CU" TO CATALOG NUMBER (EXAMPLE: EZML333225CU).

FOR METERING EQUIPMENT SHORT CIRCUIT CURRENT RATINGS REFER TO SQUARE D DICECT 173, PAGE 2-9.



HANGING MOUNTING RAIL

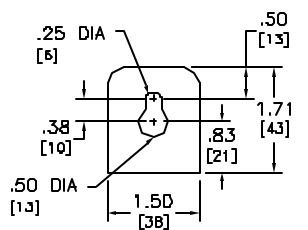
HIGH LEG (POWER LEG) FOR 3Ø 4W DELTA SYSTEM (ALL TENANT BREAKER POSITIONS)



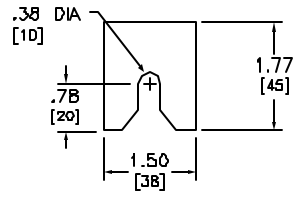
TENANT CIRCUIT DISCONNECTS (ORDER ONE PER SOCKET POSITION)			
TENANT CIRCUIT BREAKER (3-POLE)	AMPERE RATINGS MIN. - MAX.	SHORT CIRCUIT BREAKER RATING RMS SYMMETRICAL AMPERES MAX.	VOLTS MAX.
QBP-TM	70 - 225	10,000	240/120
QDP-TM	70 - 225	25,000	
QGP-TM	70 - 225	65,000	
QJP-TM	70 - 225	100,000 ▼	

▼ RATED 100kA MAX. AT 208Y/120 VAC, 65 kA MAX. AT 240/120 VAC

KNOCKOUTS		
SYMBOL	CONDUIT SIZE	
A	.50	13
B	.75	19
D	1.25	32
E	1.50	38
F	2.00	51
G	2.50	64



TOP MOUNTING BRACKET



BOTTOM MOUNTING BRACKET

DUAL DIMENSIONS: INCHES MILLIMETERS

SYSTEM TYPE (IN)	SERVICE PROVIDED (OUT)	CATALOG NUMBER	METER SOCKET TYPE	NUMBER OF POSITIONS	TENANT CIRCUIT BREAKER (ORDER SEPERATELY)	NEUTRAL AND SERVICE GROUND WIRE RANGE	EQUIPMENT GROUND LUG WIRE RANGE
3Ø 4W 240/120 VAC DELTA OR 208Y/120 VAC	3Ø 4W 240/120 VAC DELTA OR 208Y/120 VAC	EZMR333225	7-JAW RINGLESS TYPE WITHOUT BYPASS	3	3-POLE SEE TABLE ABOVE	#6-300 KCMIL CU/AL	#14-2/0 KCMIL CU #12-2/0 KCMIL AL
		EZML333225	7-JAW RINGLESS TYPE WITH LEVER BYPASS AND JAW RELEASE				

NOTES:
FINISH - GRAY BAKED ENAMEL POWDER COAT PAINT OVER CLEANED GALVANNEALED STEEL.
UL LISTED - FILE E-131B40, VOL. M
SUITABLE FOR USE AS SERVICE EQUIPMENT.
MAIN HORIZONTAL CROSS BUS RATED AT 1200 AMPERES.
GANGABLE MULTI-METERING EQUIPMENT IS DESIGNED FOR WALL MOUNTING ONLY (NOT SUITABLE FOR FLOOR STANDING EQUIPMENT).
UNMETERED COMPARTMENTS ARE SEALABLE BY UTILITY.

EZ METER-PAK GANGABLE MULTI-METERING EQUIPMENT
225 MAX 3PH 4W METER SOCKET/CIRCUIT BREAKER
3-GANG BRANCH UNITS
RAINPROOF NEMA TYPE 3R ENCLOSURES



DWG# 3303
NO.