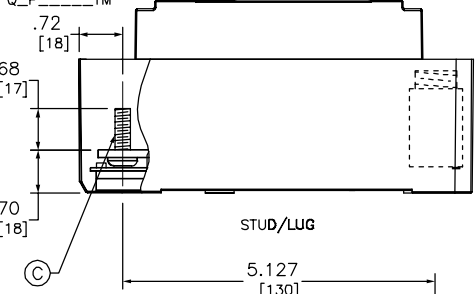
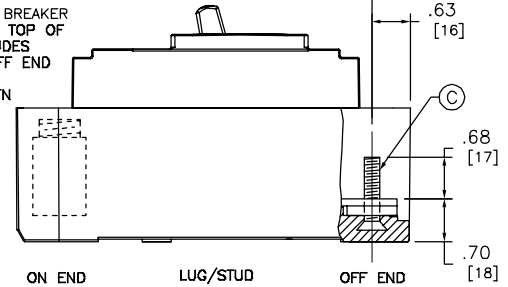


PANEL MAIN BREAKER MOUNTED AT BOTTOM OF PANEL INCLUDES STUDS IN ON END AS SHOWN
 PANEL BREAKER BRANCH CIRCUITS OMIT STUDS IN ON END.



PANEL MAIN BREAKER MOUNTED AT TOP OF PANEL INCLUDES STUDS IN OFF END AS SHOWN



- (A) MOUNTING HOLES FOR MOUNTING SCREW 48920-012-02 8-32 x 3.062 UNC
- (B) MOUNTING HOLES FOR MOUNTING SCREW 48920-012-01 8-32 x 2.062 UNC
- (C) STUD IS 1/4-20 UNC

BREAKER MOUNTING TYPES:
 Q_L22070 THROUGH Q_L32250: FLAT PAN MOUNTED, LUGS BOTH ENDS.
 Q_P22070 THROUGH Q_P32250: FLAT PAN MOUNTED, LUGS OFF END, LINE TERMINAL TAPPED (NO STUDS) ON END.
 Q_M22070TN THROUGH Q_M32250TN: FLAT PAN MOUNTED, LUGS ON END, STUDS OFF END, MOUNTED AT TOP OF PANEL.
 Q_P22070TM THROUGH Q_P32250TM: FLAT PAN MOUNTED, STUDS ON END, LUGS OFF END, MOUNTED AT BOTTOM OF PANEL.
 Q-F22070TS THROUGH Q-F32250TS: FLAT PAN MOUNTED, STUDS BOTH ENDS.
 Q-P22070TP THROUGH Q-P32250TP: FLAT PAN MOUNTED, LUGS OFF END, STUDS ON END (NO NUT/WASHER).

DUAL DIMENSIONS: INCHES [MILLIMETERS]

POWERPACT 250AMP
 Q-FRAME
 UNIT MOUNT
 2 AND 3 POLE
 MOLDED CASE CIRCUIT BREAKERS



DWG# 48996-020-01
 NO.