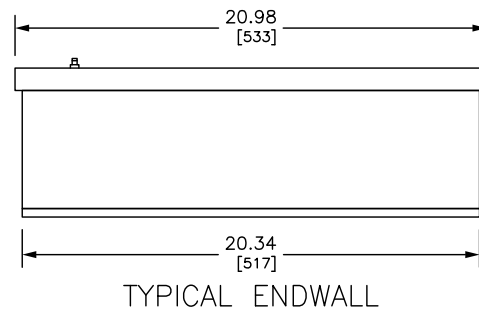
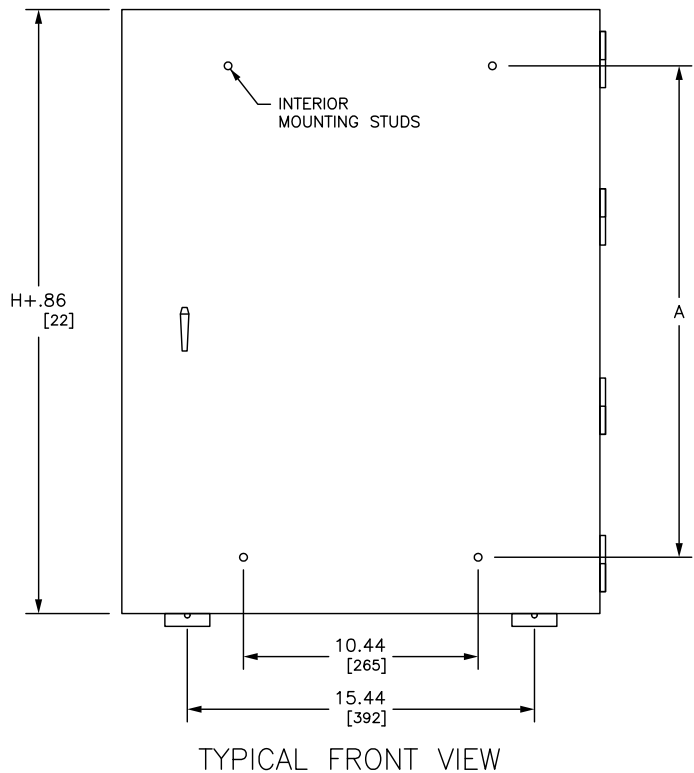
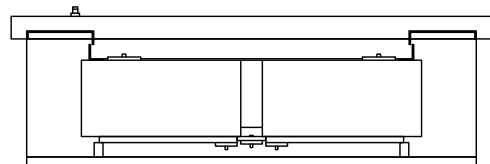
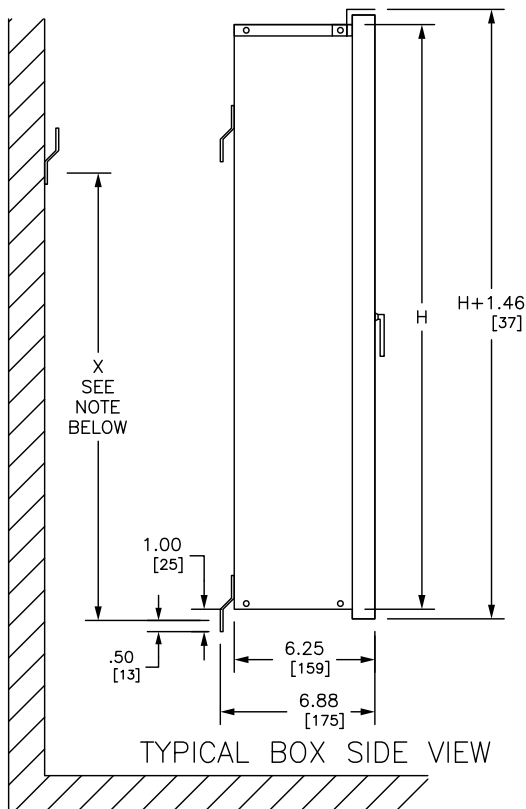


REV	DESCRIPTION	BY	DATE	—	—	—	—	—	—
—	—	—	—	—	—	—	—	—	—



NOTE: FOR "X" DIMENSION, SUBTRACT 6.60/[168] FROM THE BOX HEIGHT.  
REFER TO DP CATALOG CLASS 1640 FOR ADDITIONAL INFORMATION  
NQ PANELBOARDS MEET THE APPLICABLE REQUIREMENTS OF UL AND CSA.  
BOX: GRAY BAKED ENAMEL FINISH ELECTRODEPOSITED OVER CLEANED  
PHOSPHATIZED STEEL. INCLUDES HINGED COVER. MOUNTS TO WALL  
WITH MOUNTING BRACKETS.  
LOCK: CHROME-PLATED HANDLE LOCK. NSR 251 KEY.  
NOT PROVISIONS FOR PADLOCK.  
UNLESS OTHERWISE NOTED ALL DIMENSIONS ARE NOMINAL.

DUAL DIMENSIONS: INCHES  
MILLIMETERS

CATALOG NUMBER	BOX HEIGHT		MOUNTING INTERIOR HEIGHT	
	H		A	
	IN	MM	IN	MM
MH26WP	26.00	660	21.00	533
MH32WP	32.00	813	27.00	686
MH38WP	38.00	965	33.00	838
MH44WP	44.00	1118	39.00	991
MH50WP	50.00	1270	45.00	1143
MH56WP	56.00	1422	51.00	1295
MH62WP	62.00	1575	57.00	1448
MH68WP	68.00	1727	63.00	1600
MH74WP	74.00	1880	69.00	1753
MH80WP	80.00	2032	75.00	1905
MH86WP	86.00	2184	81.00	2057

JOB NAME: ———	EQUIPMENT DESIGNATION: ———
JOB LOCATION: ———	EQUIPMENT TYPE: NQ NEMA 3R/5/12 ENCLOSURES
DRAWN BY: ———	DRAWING TYPE: ———
ENGR: ———	
DATE: AUGUST 2017	
DRAWING STATUS: ———	DWG# MH26WP
	PG 01 OF 01 REV —