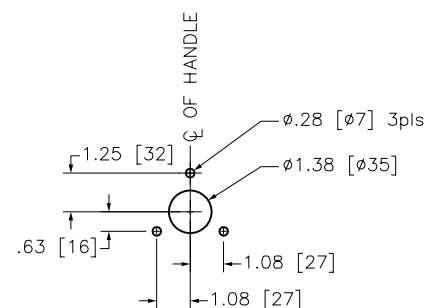
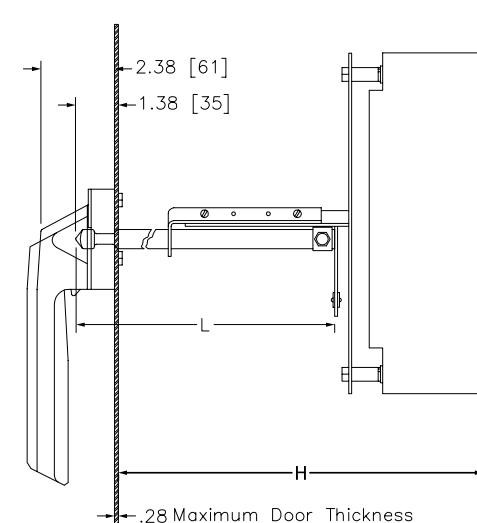


Minimum to wall or barrier to insure adequate wire bending space to lug surface when the maximum wire size is used with standard lugs. REF NEC 430-10



ENCLOSURE DOOR DRILLING



Catalog Number: 9421-LX7, LX1, LX4
 Ratings: For use with TYPE NAL, NCL, NEL & NXL CIRCUIT BREAKERS
 UL File/CCN: E62922 DIHS2
 CSA File/Class: -
 Meets Standards:
 Weight: 7.8 lbs
 Wire Size: -
 Terminal torque: -
 Mounting Hwd: (4)-1/4-20 screws

NOTE: LX1 SOLD WITH STANDARD SHAFT KIT
 LX2 SOLD WITH LONG SHAFT KIT
 LX7 SOLD ONLY WITH OPERATING MECHANISM INCLUDING LOCKOUT

H=Standard shaft		H=Long shaft	
MIN	MAX	MIN	MAX
8.25	12.75	8.25	23.38

SHAFT LENGTH FORMULA - $L = H - 5.17$
 MOUNTING DEPTH (H) - measured from the circuit breaker mounting surface to the outside of the enclosure door.

"THE SQUARE D COMPANY HAS PROPRIETARY RIGHTS TO THE INFORMATION CONTAINED HEREON. THIS INFORMATION REMAINS THE PROPERTY OF SQUARE D COMPANY AND MAY BE USED ONLY IN CONFORMANCE WITH INSTRUCTIONS ISSUED BY SQUARE D COMPANY. USER SHOULD VERIFY DRAWINGS ARE TO THE LATEST/CURRENT REVISION PRIOR TO INCORPORATING IN A DESIGN FILE."

DO NOT SCALE DRAWING
 UNLESS OTHERWISE SPECIFIED DIMENSIONS ARE IN INCHES

THIRD ANGLE PROJECTION
 TOLERANCES
 UNLESS OTHERWISE SPECIFIED
 2 PLACE DECIMALS ± .01

FOR USE WITH TYPE NAL, NCL, NEL & NXL
 CIRCUIT BREAKERS
 CLASS 9422 TYPE LX7, LX1, LX4

SQUARE D COMPANY

DWG# 9422_LX_OUTLINE_001
 NO.