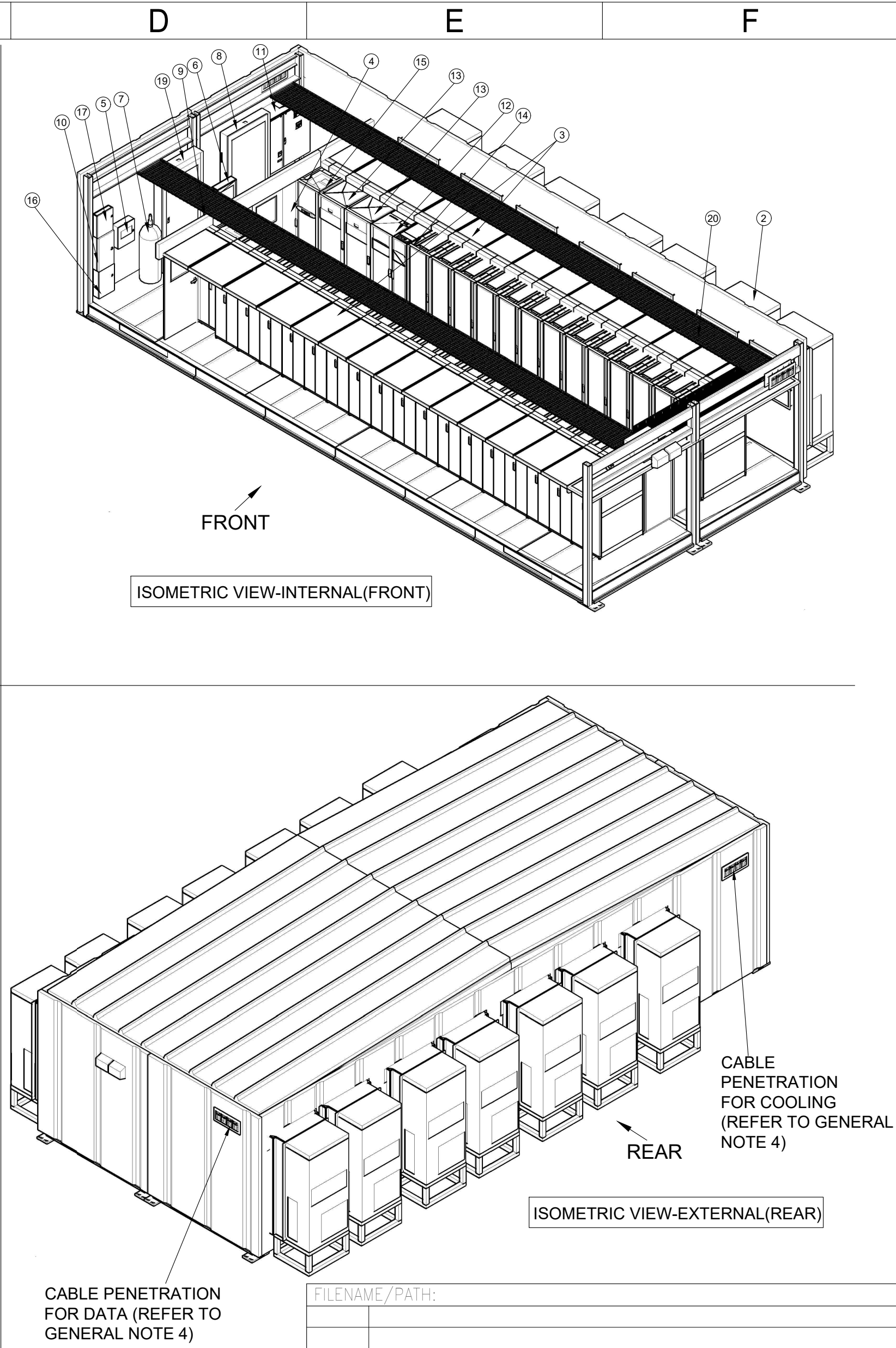


- 4
- NOTES:
1. INSTALLATION SHALL COMPLY WITH ALL APPLICABLE NATIONAL, STATE AND LOCAL CODES.
 2. REFER TO PRODUCT DOCUMENTATION FOR FURTHER INFORMATION.
 3. UNLESS OTHERWISE SPECIFIED, ALL DIMENSIONS ARE IN INCHES[MILLIMETERS].
 4. REFER TO ELECTRICAL DRAWINGS FOR CONDUIT SIZES AND EXACT LOCATION OF CABLE PENETRATIONS FOR INPUT POWER, DATA AND FOR COOLING SYSTEM.
 5. REFER TO ELECTRICAL DRAWINGS FOR SPECIFIC DETAILS ON THE ELECTRICAL SYSTEM.



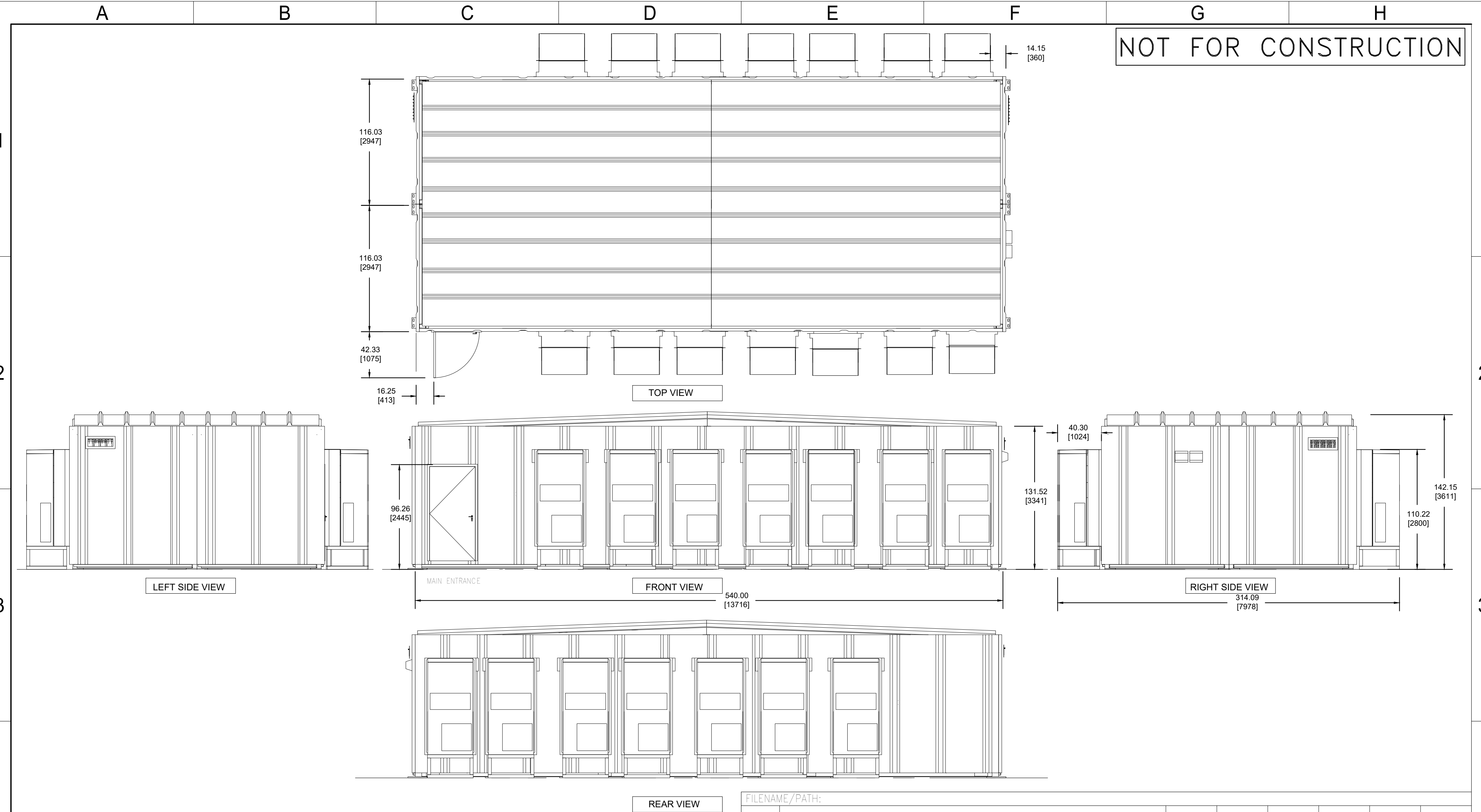
G			H		
NOT FOR CONSTRUCTION					
* - UNLESS OTHERWISE SPECIFIED QUANTITY IS ONE					
SL.NO.	DESCRIPTION*				
1	IT Rack(Typical, Qty=28) 42Ux600x1200				
2	Wallmount Cooling Unit - WMF0661 (Qty 14)				
3	Hot Aisle Containment				
4	Cold Aisle				
5	Fire Alarm Control Panel				
6	208V/120V Distribution Panel				
7	Fire Suppression Cylinder				
8	480V Main Distribution Panel				
9	480-208/120V Step Down Transformer(See Sectional Views)				
10	Generator Annunciator Panel(Optional)				
11	ASCO-300 Automatic Transfer Switch(Service Entrance)				
12	Galaxy VM 180kVA UPS				
13	GVMMODBCW Battery Cabinet				
14	Galaxy VM Input/Output Cabinet				
15	Modular Power Distribution Unit-PDPM150G6F				
16	Control Panel				
17	Access Control Panel(Optional)				
18	Networking IT Rack(Typical, Qty=2) 42Ux750x1200				
19	480V Distribution Panel				
20	Cable Tray(Typical)				
21	Energy Recovery Ventilator with Damper System				

BASE		DD-MMM-YY				
	DRWN	DATE	ENGR	DATE	APPR	DATE


REVISIONS		
TITLE: PREFAB CONFIGURATION-9 60kW/180kVA, ROOM COOLING, 30-RACKS INPUT - 480V,3PH,4W OUTPUT - 208V,3PH,4W GENERAL ARRANGEMENT	DWG NO:	PFMIEC160WD1N30C
	DRAWN:	K.NAGENDRA
	ENGINEER:	X XXX
	APPROVED:	X XXX

REV: A/0	THIRD ANGLE PROJECTION
14-FEB-20	DD-MMM-YY

PROJECT: PREFAB	SHEET 1 OF 3
-----------------	--------------



- NOTES:**
- 1. INSTALLATION SHALL COMPLY WITH ALL APPLICABLE NATIONAL, STATE AND LOCAL CODES.
 - 2. REFER TO PRODUCT DOCUMENTATION FOR FURTHER INFORMATION.
 - 3. UNLESS OTHERWISE SPECIFIED, ALL DIMENSIONS ARE IN INCHES[MILLIMETERS].
 - 4. REFER TO ELECTRICAL DRAWINGS FOR CONDUIT SIZES AND EXACT LOCATION OF CABLE PENETRATIONS FOR INPUT POWER, DATA AND FOR COOLING SYSTEM.
 - 5. REFER TO ELECTRICAL DRAWINGS FOR SPECIFIC DETAILS ON THE ELECTRICAL SYSTEM.

FILENAME/PATH:								
0	THIS DRAWING IS BASED ON DRAWING NUMBER PLACEHOLDER – INITIAL RELEASE			DD–MMM–YY				
REV	DESCRIPTION		DRWN	DATE	ENGR	DATE	APPR	DATE
REVISIONS								
<div>THIS DRAWING AND SPECIFICATIONS HEREIN ARE THE PROPERTY OF SCHNEIDER ELECTRIC AND SHALL NOT BE COPIED, REPRODUCED OR USED IN WHOLE OR IN PART, AS THE BASIS FOR THE MANUFACTURE OR SALE OF ITEMS WITHOUT WRITTEN PERMISSION FROM SCHNEIDER ELECTRIC. THIS DRAWING IS BASED UPON LATEST AVAILABLE INFORMATION AND IS SUBJECT TO CHANGE WITHOUT NOTICE.</div> <div></div>			TITLE: PREFAB CONFIGURATION–9 160kW/180kVA, ROOM COOLING, 30–RACKS INPUT – 480V,3PH,4W OUTPUT – 208V,3PH,4W GENERAL ARRANGEMENT		DWG NO: PFMIEC160WD1N30C		REV: A/0	
					DRAWN: K.NAGENDRA 14–FEB–20		THIRD ANGLE PROJECTION	
			ENGINEER: X XXX		DD–MMM–YY			
			PROJECT: PREFAB		SHEET 2 OF 3	APPROVED: X XXX		DD–MMM–YY

1

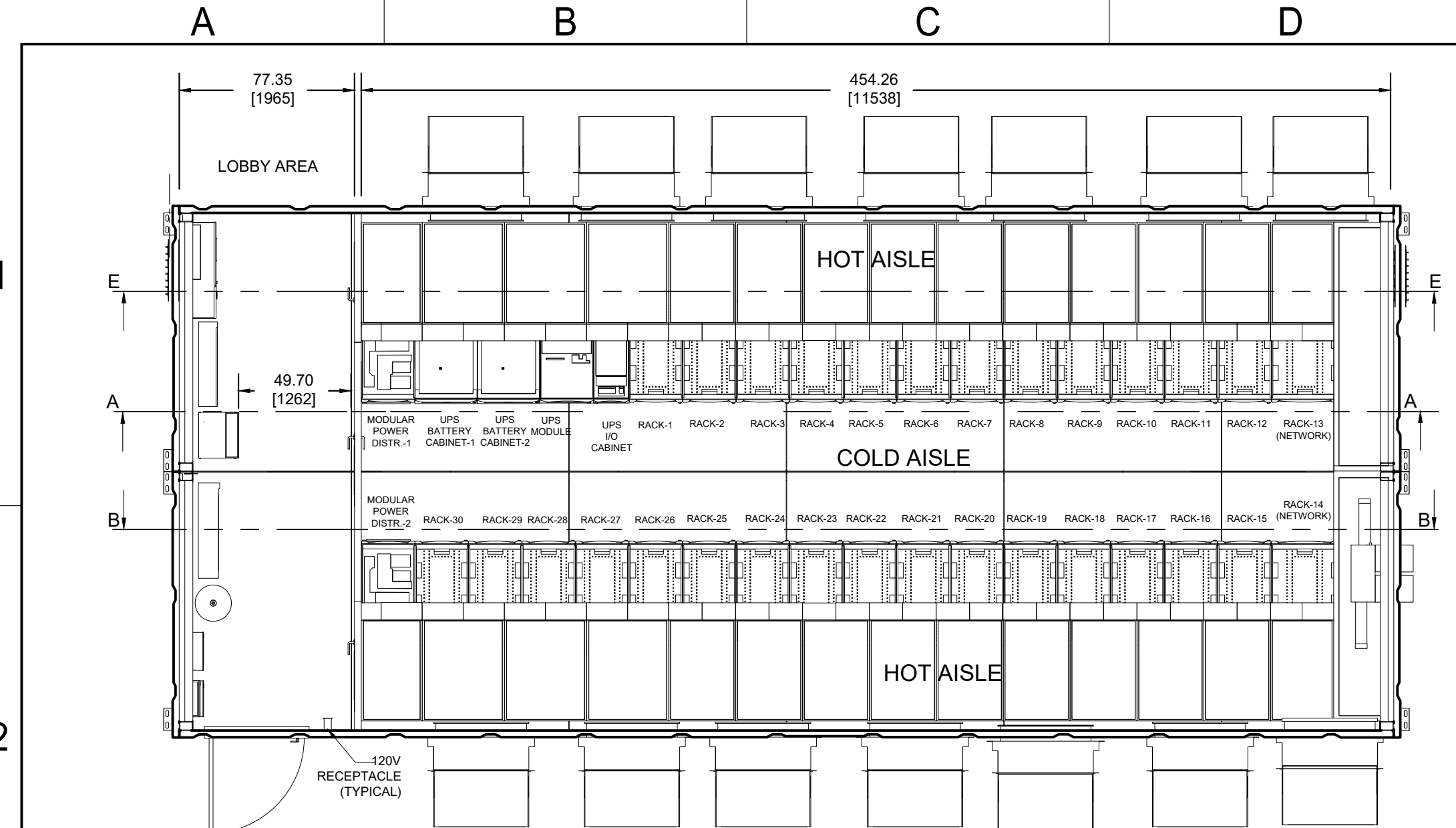
2

3

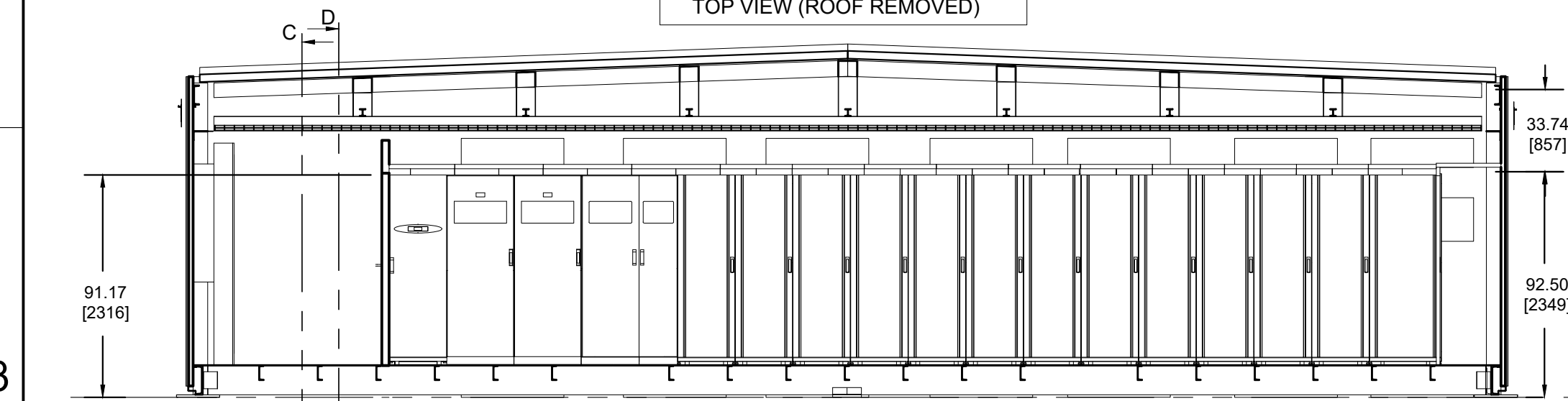
4

- NOTES:**
- 1. INSTALLATION SHALL COMPLY WITH ALL APPLICABLE NATIONAL, STATE AND LOCAL CODES.
 - 2. REFER TO PRODUCT DOCUMENTATION FOR FURTHER INFORMATION.
 - 3. UNLESS OTHERWISE SPECIFIED, ALL DIMENSIONS ARE IN INCHES[MILLIMETERS].
 - 4. REFER TO ELECTRICAL DRAWINGS FOR CONDUIT SIZES AND EXACT LOCATION OF CABLE PENETRATIONS FOR INPUT POWER, DATA AND FOR COOLING SYSTEM.
 - 5. REFER TO ELECTRICAL DRAWINGS FOR SPECIFIC DETAILS ON THE ELECTRICAL SYSTEM.

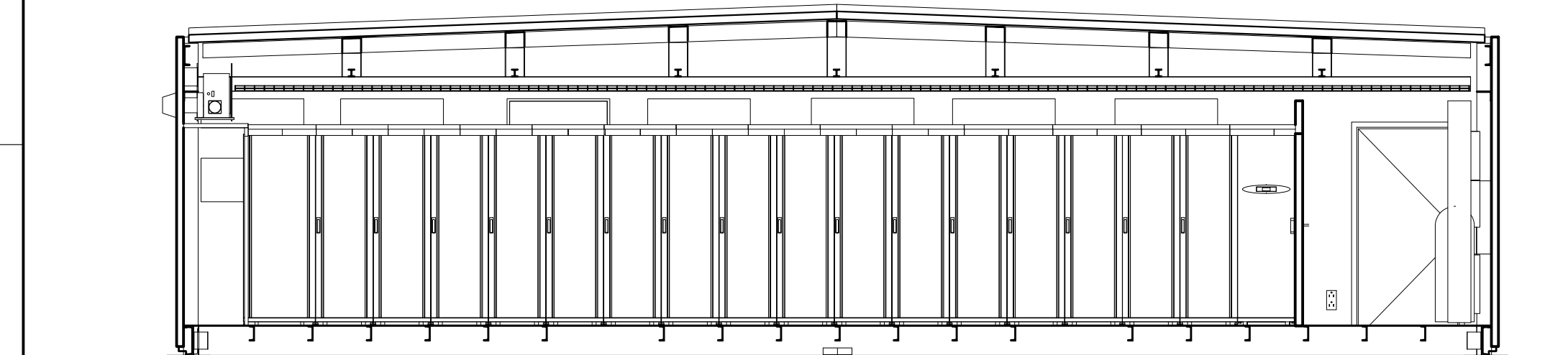
4



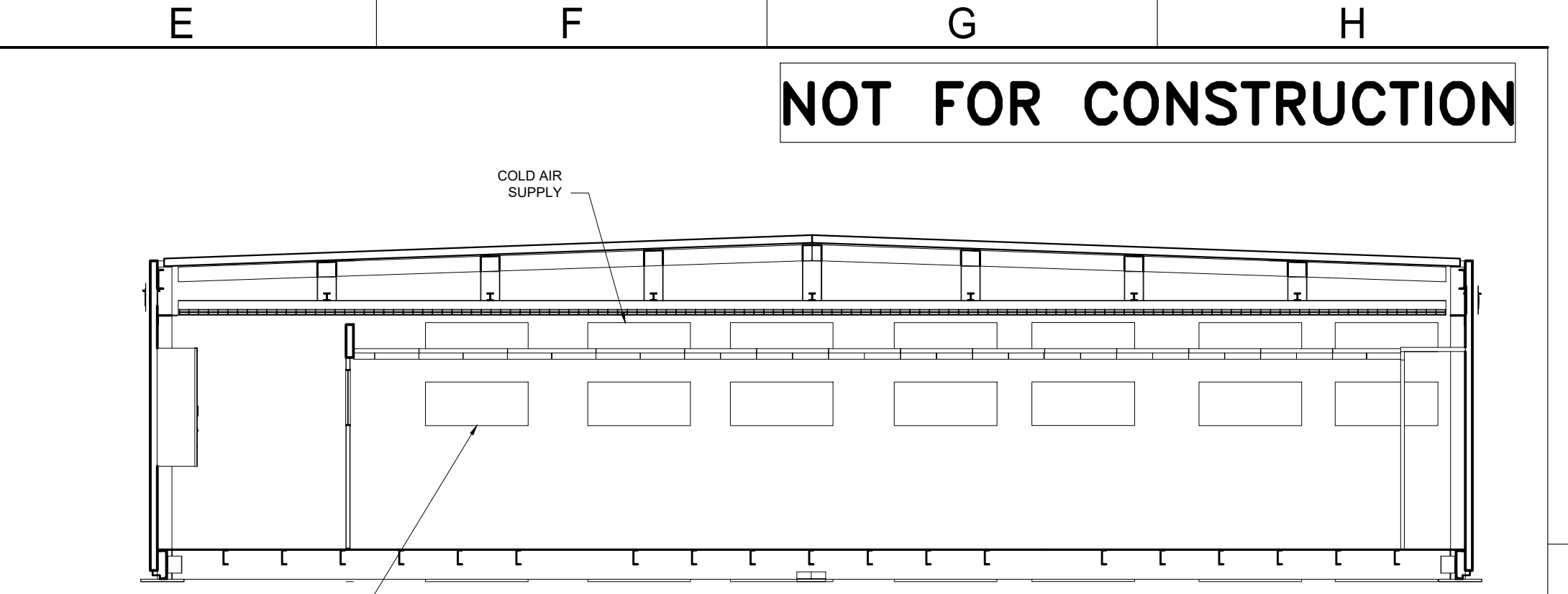
TOP VIEW (ROOF REMOVED)



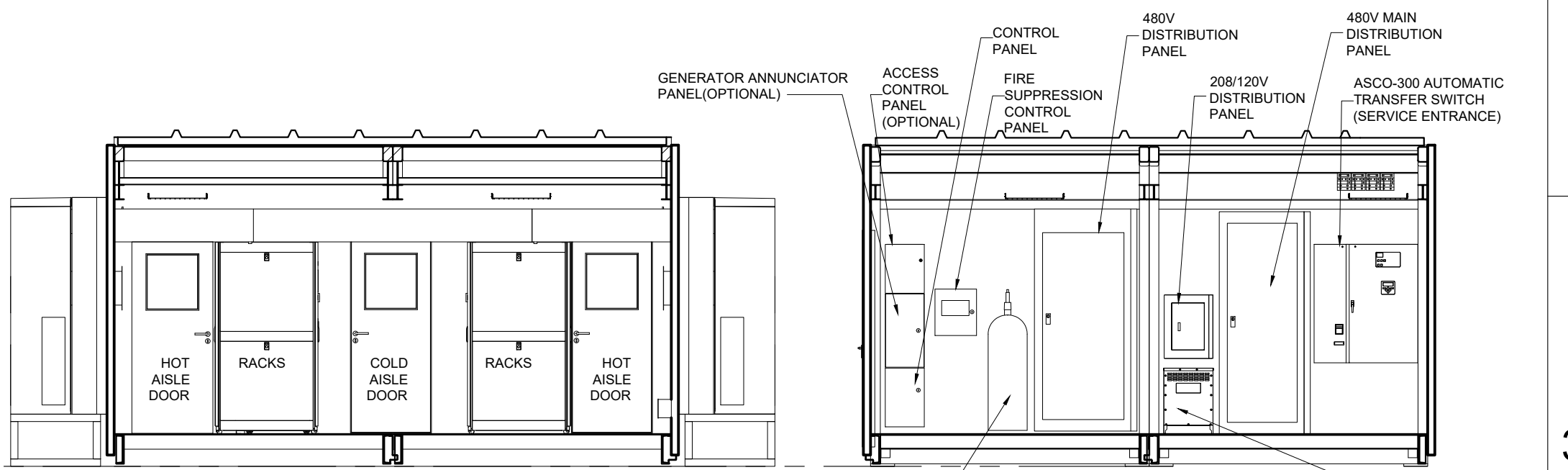
SECTION-AA (FRONT VIEW)



SECTION-BB (REAR VIEW)




SECTION-EE (AIR INLET AND DISCHARGE)



SECTION-DD (RACKS AND CONTAINMENT)

SECTION-CC (LOBBY AREA)

FILENAME/PATH:															
0	THIS DRAWING IS BASED ON DRAWING NUMBER PLACEHOLDER - INITIAL RELEASE						DD-MMM-YY								
REV	DESCRIPTION					DRWN	DATE	ENGR	DATE	APPR	DATE				
REVISIONS															
THIS DRAWING AND SPECIFICATIONS HEREIN ARE THE PROPERTY OF SCHNEIDER ELECTRIC AND SHALL NOT BE COPIED, REPRODUCED OR USED IN WHOLE OR IN PART, AS THE BASIS FOR THE MANUFACTURE OR SALE OF ITEMS WITHOUT WRITTEN PERMISSION FROM SCHNEIDER ELECTRIC. THIS DRAWING IS BASED UPON LATEST AVAILABLE INFORMATION AND IS SUBJECT TO CHANGE WITHOUT NOTICE.							TITLE: PREFAB CONFIGURATION-9 160kW/180kVA, ROOM COOLING, 30-RACKS			DWG NO: PFMIEC 160WD1N30C		REV. A/0			
							INPUT - 480V,3PH,4W OUTPUT - 208V,3PH,4W GENERAL ARRANGEMENT			DRAWN: K.NAGENDRA		14-FEB-20			
										ENGINEER: X XXX		DD-MMM-YY			
							PROJECT: PREFAB		SHEET 3 OF 3		APPROVED: X XXX		DD-MMM-YY		
													THIRD ANGLE PROJECTION		

1

2

3

4

A B C D E F G H