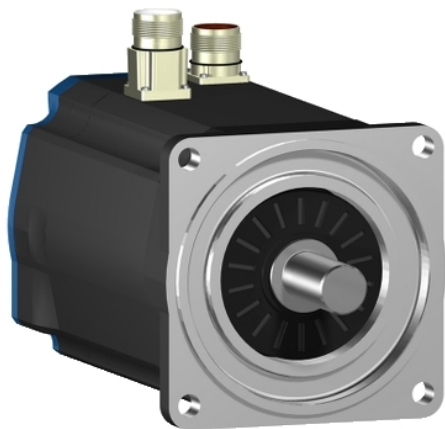


SH31003M01A1200

servo motor SH3 100

8Nm,nokey,single,nobrake,str.conn,IP65/
IP67,6k RPM



Main

Range compatibility	PacDrive 3
Product or component type	Servo motor
Device short name	SH3.....M

Complementary

Maximum mechanical speed	6000 rpm
[Us] rated supply voltage	115...480 V
Phase	Three phase
Continuous stall current	3.4 A
Continuous stall torque	70.81 lbf.in (8 N.m) 115...480 V three phase
Peak stall torque	250.48 lbf.in (28.3 N.m) 115...480 V three phase
Nominal output power	410 W 115 V three phase 790 W 230 V three phase 1470 W 400 V three phase 1700 W 480 V three phase
Nominal torque	69.04 Lbf.in (7.8 N.m) 115 V three phase 66.38 Lbf.in (7.5 N.m) 230 V three phase 61.96 Lbf.in (7 N.m) 400 V three phase 59.83 lbf.in (6.76 N.m) 480 V three phase
Nominal speed	500 rpm 115 V three phase 1000 rpm 230 V three phase 2000 rpm 400 V three phase 2400 rpm 480 V three phase
Maximum current Irms	14.7 A
Shaft end	Smooth shaft
Shaft diameter	0.75 in (19 mm)
Shaft length	1.57 in (40 mm)
Key width	0.24 in (6 mm)
IP degree of protection	Motor IP65 EN/IEC 60034-5 Shaft bushing IP65 EN/IEC 60034-5 Housing IP67 EN/IEC 60034-5
Encoder type	Absolute single turn SinCos Hiperface
Speed feedback resolution	128 periods
Holding brake	Without
Mounting support	International standard flange
Motor flange size	3.94 in (100 mm)
Torque constant	1.22 N.m/A 248 °F (120 °C)
Back emf constant	148 V/krpm 68 °F (20 °C)
Number of motor poles	4
Rotor inertia	3.22 kg.cm²
Stator resistance	5.3 Ohm
Stator inductance	49.8 mH

Maximum radial force Fr	1050 N 1000 rpm 830 N 2000 rpm 730 N 3000 rpm 660 N 4000 rpm
Maximum axial force Fa	160 N
Type of cooling	Natural convection
Length	9.47 in (240.5 mm)
Centring collar diameter	3.74 in (95 mm)
Centring collar depth	0.14 in (3.5 mm)
Number of mounting holes	4
Mounting holes diameter	0.35 in (9 mm)
Circle diameter of the mounting holes	4.53 in (115 mm)
Net Weight	16.53 lb(US) (7.5 kg)

Contractual warranty

Warranty	18 months
----------	-----------