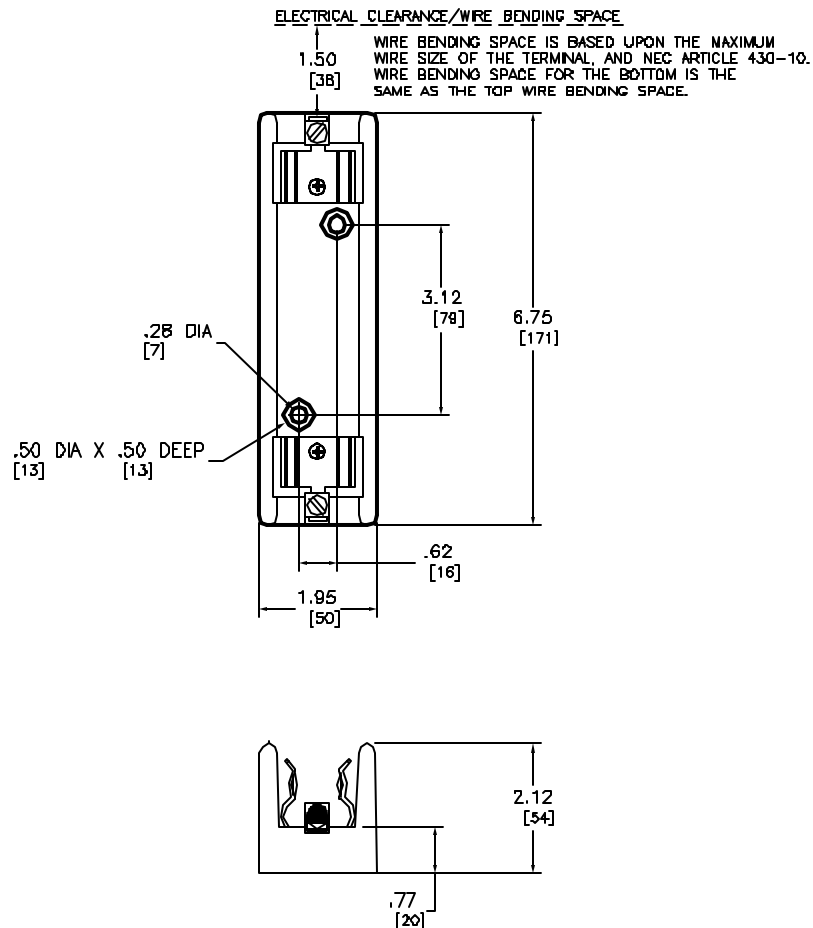


TABLE A

PRODUCT NUMBER	WEIGHT	
	lb	kg
908DFB1621	0.57	0.26
908DFB1621R	0.57	0.26
908DFB1621C	0.61	0.28

TABLE B

WIRE SIZE AWG	RECOMMENDED TIGHTENING TORQUE	
	lb-in	Nm
#2-#3	50	5.6
#4-#6	45	5.1
#8	40	4.5
#10-#14	35	4.0



Catalog Number: 9080-FB1621, FB1621R, FB1621C
 Ratings: 600VAC, 50A
 UL File/CCN: E40747 IZLT
 CSA File/Class: LR7D36D
 Meets Standards: -
 Weight: SEE TABLE A
 Wire Size: #14-#2 AWG
 Terminal torque: SEE TABLE B
 Mounting Hwd.: -

DUAL DIMENSIONS: INCHES
 MILLIMETERS

FUSEHOLDERS (TYPE FB) (600VAC/6DA/1 POLE)
 CLASS 9080 TYPE FB1621, FB1621R, FB1621C



DWG# E0806201-01
 NO.