

Main

Product or component type	Common mode output filter
Range compatibility	Altivar Process ATV900 Altivar Process ATV600
Value of inductance	219.6 μ H
Product compatibility	Variable speed drive ATV630 wall mount, 0.75...11 kW, 380...480 V Variable speed drive ATV650 wall mount, 0.75...11 kW, 380...480 V Variable speed drive ATV930 wall mount, 0.75...11 kW, 380...480 V Variable speed drive ATV950 wall mount, 0.75...11 kW, 380...480 V Variable speed drive ATV630 wall mount, 0.75...5.5 kW, 200...240 V Variable speed drive ATV930 wall mount, 0.75...5.5 kW, 200...240 V

Complementary

Maximum motor cable length	492.13 Ft (150 m)(shielded cable)5.5...11 kW 380...480 V 1 984.25 Ft (300 m)(unshielded cable)0.75...11 kW 380...480 V 1 984.25 Ft (300 m)(shielded cable)0.75...4 kW 380...480 V 1 1640.42 Ft (500 m)(unshielded cable)5.5...11 kW 380...480 V 1 VW3A5501 1640.42 Ft (500 m)(shielded cable)5.5...11 kW 380...480 V 2 3280.84 Ft (1000 m)(unshielded cable)0.75...5.5 kW 380...480 V 1 VW3A5501 3280.84 Ft (1000 m)(unshielded cable)7.5...11 kW 380...480 V 2 492.13 Ft (150 m)(shielded cable)5.5 kW 200...240 V 1 984.25 Ft (300 m)(unshielded cable)0.75...5.5 kW 200...240 V 1 984.25 Ft (300 m)(shielded cable)0.75...4 kW 200...240 V 1 1640.42 Ft (500 m)(unshielded cable)5.5 kW 200...240 V 1 VW3A5501 1640.42 Ft (500 m)(shielded cable)5.5 kW 200...240 V 2 3280.84 Ft (1000 m)(unshielded cable)0.75...4 kW 200...240 V 1 VW3A5501 3280.84 ft (1000 m)(unshielded cable)5.5 kW 200...240 V 2
Saturation current	1.1 A
Internal diameter	1.46 in (37.1 mm) 3-phase cable inside 1.46 in (37.1 mm) PE cable outside
Electrical insulation class	Class I
Mechanical robustness	Shocks class 3M4 IEC 60721-3-3 Vibrations class 3M4 IEC 60721-3-3
Switching frequency	\leq 10 kHz
Maximum output frequency	100 Hz
Maximum Height	6.45 in (163.8 mm)
Maximum Width	2.60 in (66 mm)
Maximum Depth	2.60 in (66 mm)
Net Weight	1.46 lb(US) (0.66 kg)

Environment

Relative humidity	5...95 % without condensation
Ambient air temperature for operation	5...140 °F (-15...60 °C)
Ambient air temperature for storage	-40...158 °F (-40...70 °C)

Ordering and shipping details

Category	22276 - ATV930 FRAMES 1 & 2
Discount Schedule	CP4E
GTIN	00785901014140
Nbr. of units in pkg.	1
Package weight(Lbs)	1 lb(US) (0.45 kg)
Returnability	No

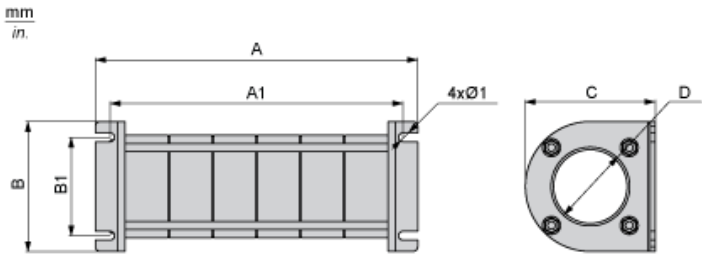
Packing Units

Unit Type of Package 1	PCE
Package 1 Height	3.94 in (10 cm)
Package 1 width	4.41 in (11.2 cm)
Package 1 Length	8.66 in (22 cm)
Unit Type of Package 2	P06
Number of Units in Package 2	1
Package 2 Weight	20.54 lb(US) (9.316 kg)
Package 2 Height	19.69 in (50 cm)
Package 2 width	31.50 in (80 cm)
Package 2 Length	23.62 in (60 cm)

Offer Sustainability

California proposition 65	WARNING: This product can expose you to chemicals including: Lead and lead compounds which is known to the State of California to cause Carcinogen & Reproductive harm. For more information go to www.p65warnings.ca.gov
REACH free of SVHC	Yes
EU RoHS Directive	Pro-active compliance (Product out of EU RoHS legal scope) EU RoHS Declaration
Toxic heavy metal free	Yes
Mercury free	Yes
RoHS exemption information	Yes
China RoHS Regulation	China RoHS Declaration

Dimensions



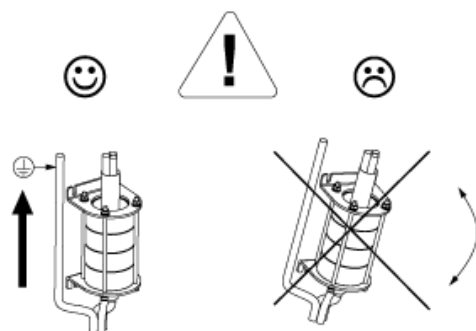
Dimensions in mm

A	B	A1	B1	Ø1	C	D
163.8	66	148.8	50	4.5	66	37.1

Dimensions in in.

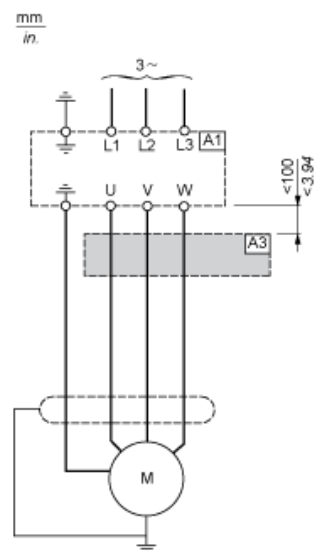
A	B	A1	B1	Ø1	C	D
6.4	2.6	5.9	2.0	0.18	2.6	1.5

Mounting Recommendations



Recommended Schema

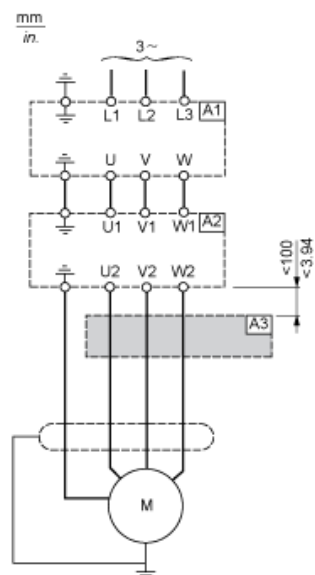
Connection at the Output Terminals of the Drive



A1 : Drive

A3 : Common mode filter

Connection at the Output Terminals of the dv/dt Filter or Sinus Filter



A1 : Drive

A2 : dv/dt or sinus filter

A3 : Common mode filter