

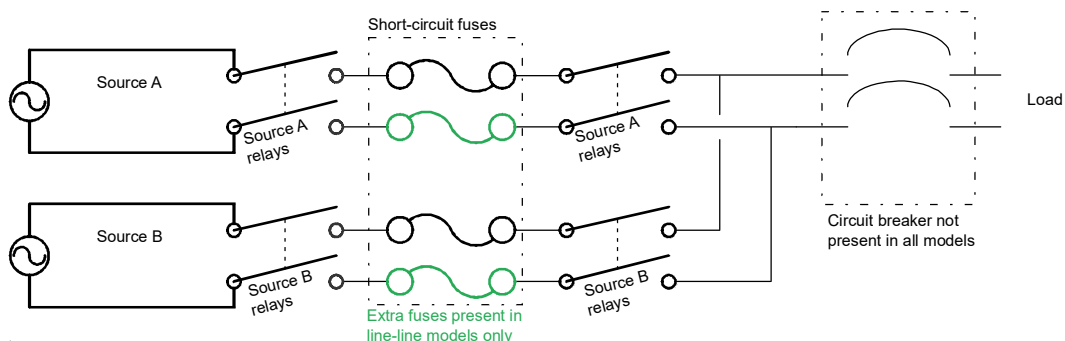
# Automatic Transfer Switch AP4453

## Overview

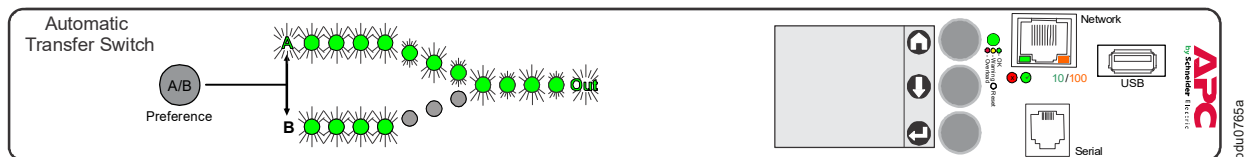
The APC by Schneider Electric Rack Automatic Transfer Switch (ATS) provides reliable, redundant power to single-corded equipment loads, such as servers. The Rack ATS has two input power cords supplying power to the connected loads. If the primary source becomes unavailable or out of the selected range, the Rack ATS will seamlessly source power from the secondary source without interrupting critical loads.

The Rack ATS has built-in network connectivity, which allows for remote management via Web, Telnet, SNMP, SSH or StruxureWare Data Center Expert® interfaces.

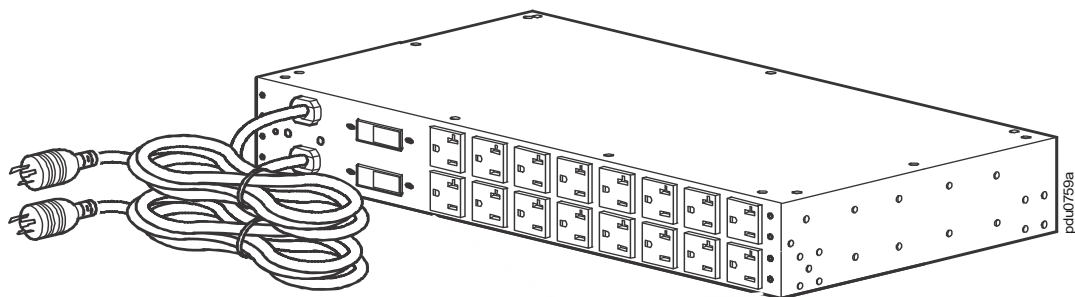
## ATS schematic



## Front



## Rear



**Input power cords:** The two cords connect the ATS to two separate power sources (A, B). The switch draws power from the preferred source and automatically switches to the secondary source when necessary. The two (2) 2.44-m (8-ft) power cords have L5-30P plugs.

**Outlets:** The outlets connect the ATS to equipment in the rack or enclosure, providing a redundant source of power to the connected equipment. Each switch has sixteen (16) 5-20R outlets.

**Circuit breakers:** The ATS is protected by two (2) 20 A single-pole circuit breakers.

# Specifications

## Electrical

Nominal input voltage	120 Vac
Acceptable input voltage	±10% of nominal
Input frequency	50/60 Hz
Input connectors	Two (2) 2.44-m (8-ft) L5-30P power cords
Output connectors	Sixteen (16) 5-20R outlets
Maximum output current	16 A (ampacity corrected)—outlet 16 A (ampacity corrected)—bank
Maximum output/input current	24 A (ampacity corrected)
Overload protection	
Internal	Two (2) 20 A single-pole circuit breakers
External (recommended)	30 A facility provided
Transfer time	10 ms maximum (high sensitivity, 50–60 Hz) 12 ms maximum (low sensitivity, 50–60 Hz)
Short circuit current rating	10 kA

## Physical

Dimensions (H x W x D)	88.1 x 431.8 x 236.2 mm (3.47 x 17.00 x 9.30 in)
Shipping dimensions (H x W x D)	209.5 x 584.2 x 355.6 mm (8.25 x 23.00 x 14.00 in)
Weight	6.33 kg (13.95 lb)
Shipping weight	8.82 kg (19.45 lb)

## Environmental

Maximum elevation (above MSL)	
Operating	0 to 3000 m (0 to 10,000 ft)
Storage	0 to 15 000 m (0 to 50,000 ft)
Temperature	
Operating	–5 to 45°C (23 to 113°F)
Storage	–25 to 65°C (–13 to 149°F)
Humidity	
Operating	5 to 95%, non-condensing
Storage	5 to 95%, non-condensing

## Compliance

EMC	FCC Part 15 / ICES-003
Safety	cULus - UL/EN/IEC 62368-1

Customer support and warranty information are available on the website,  
**[www.apc.com](http://www.apc.com)**.