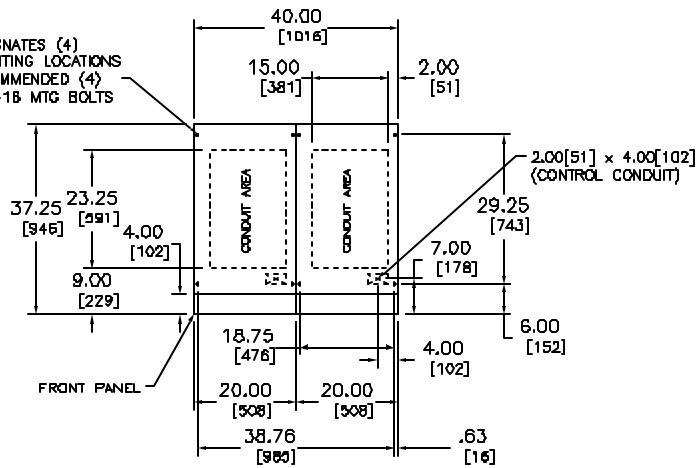
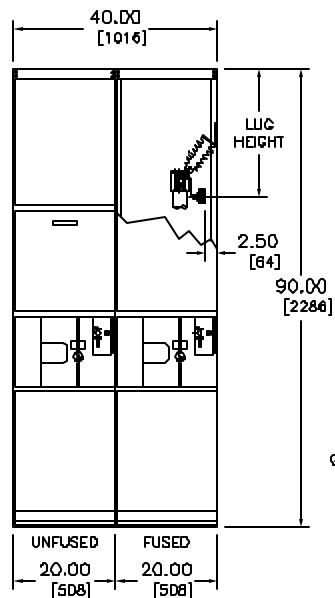


TOP VIEW

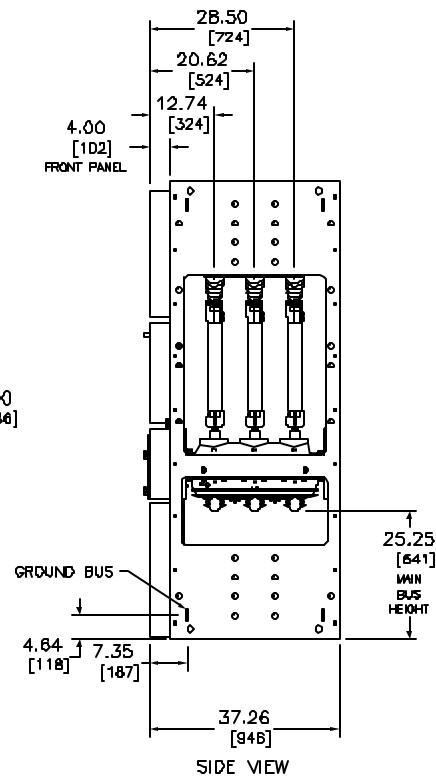
DESIGNATES (4)
MOUNTING LOCATIONS
RECOMMENDED (4)
3/8-18 MTG BOLTS
TYP



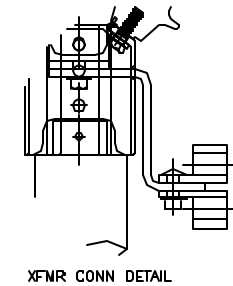
FLOOR PLAN



FRONT VIEW



SIDE VIEW



XFMR CONN DETAIL

GENERAL NOTES

SWITCH RATINGS

RATED MAX. VOLTAGE:	5.0 KV / 15.0 KV
IMPULSE WITHSTAND:	60 KV 95 KV
FREQUENCY:	50 / 60 Hz
CONTINUOUS CURRENT:	600 A
LOAD INTERRUPTING CURRENT:	600 A
MOMENTARY CURRENT:	40 KA ASYM.
FAULT CLOSE CURRENT:	40 KA ASYM.
WEIGHT:	630 LBS APPROX.

FUSE

COOPER - BUSSMAN DIN STYLE / E RATED

LUGS

LINE & LOAD #2 - 350 MCM (SET SCREW)

LUG HEIGHT

ALL FUSED CONN. LUG HEIGHT = 25.19

CONFIGURATION

RH - BUILT AS SHOWN LH - BUILT OPP HAND

OUTLINE
HVL/CC APP-B FUSED
XFMR CDNN.



DWG# 44046-215
NO.