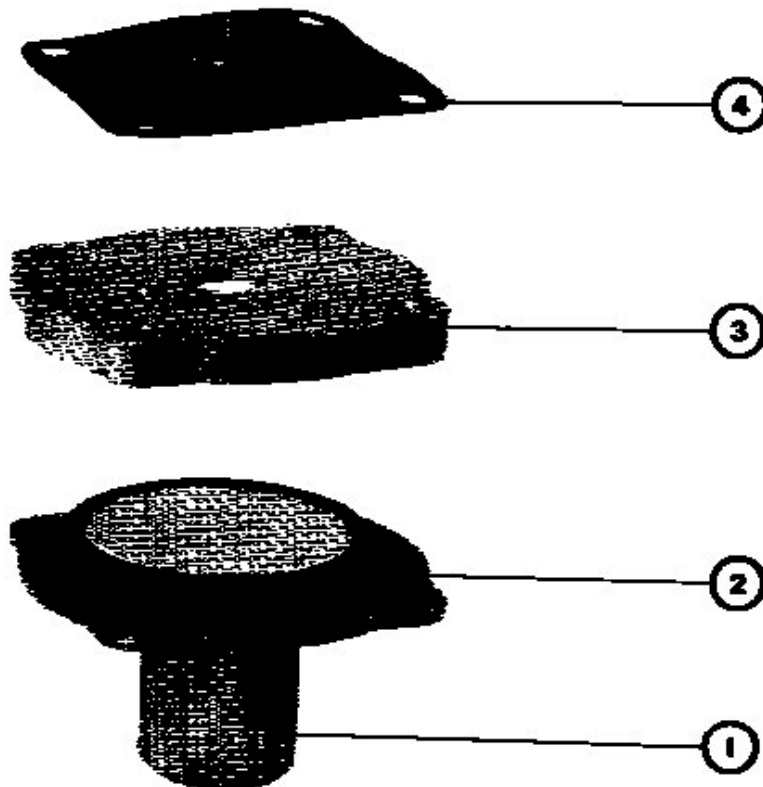




**CLASS 9998 TYPE PC 266, 267**  
**FOR CLASS 9998 TYPE PC 268, 269, SEE REVERSE SIDE**

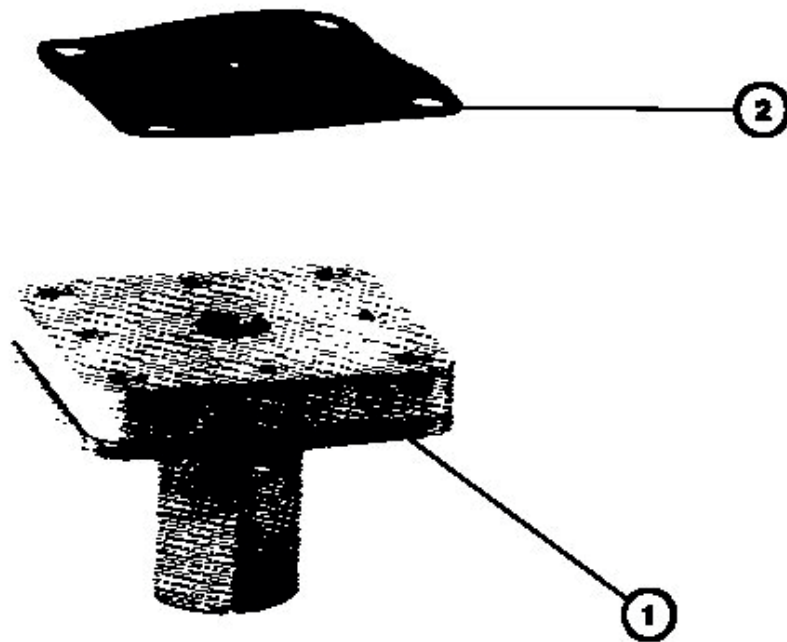


1. Remove actuator mounting screws, flange (1), diaphragm assembly (2), flange adaptor (3), and gasket (4).
2. Discard old diaphragm assembly (2) and gasket (4).
3. Install new diaphragm assembly (2) into cavity of flange adaptor (3).
4. Install flange (1) and actuator mounting screws, torque screws to 8-12 lbf-in (.09-.14 N·m).

65013-010-75C



**CLASS 9998 TYPE PC 268, 269  
FOR CLASS 9998 TYPE PC 266, 267, SEE REVERSE SIDE**



1. Remove four corner mounting screws, actuator assembly (1), and gasket (2). Do not remove the four interior screws (slotted heads).
2. Discard old actuator assembly (1), gasket (2), and mounting screws.
3. Install new actuator assembly (1), gasket (2), and mounting screws. Torque screws to 8-12 lbf-in (.09-.14 N·m).

65013-010-76C