

## Product data sheet

### Characteristics

# PAS44E0400

portal axis PAS E - profile size 110x110mm -  
toothed belt - ball - stroke 400mm



### Main

Range of product	Lexium PAS E
Product or component type	Portal axis
Product specific application	For 1 direction
Load position	On carriage
Drive type	Toothed belt
Guide type	Ball

### Complementary

Operating position	Horizontal
Typical payload	110.23 lb(US) (50 kg)
Distance per revolution	10.39 in (264 mm)
Operating force	2600 N for Fx 6270 N for Fy 6270 N for Fz
Maximum speed	6.56 ft/s (2 m/s)
Maximum acceleration	49.21 ft/s <sup>2</sup> (15 m/s <sup>2</sup> )
Max. drive torque	35.40 lbf.in (4 N.m)
Max. torque	<44.25 Lbf.in (5 N.m) for Mx <97.36 Lbf.in (11 N.m) for My <150.46 lbf.in (17 N.m) for Mz
Stroke	15.75 in (400 mm)
Product weight	81.57 Lb(US) (37 kg) at 0 stroke with carriage and motor 9.26 Lb(US) (4.2 kg) of carriage 112.44 lb(US) (51 kg) total
Repeat accuracy	+/- 0.05 mm
Outer dimension	110 x 110 mm
Service life	30000 km
Associated module	PLE120 planetary gearbox 5:1 supplied) BMH1401P06A2A servo motor supplied) LXM32.D72N4 servo drive not supplied)

### Ordering and shipping details

GTIN	03606485237589
Package weight(Lbs)	96.47 lb(US) (43.760 kg)

### Packing Units

Package 1 Height	2.650 dm
Package 1 width	4.880 dm
Package 1 Length	12.020 dm

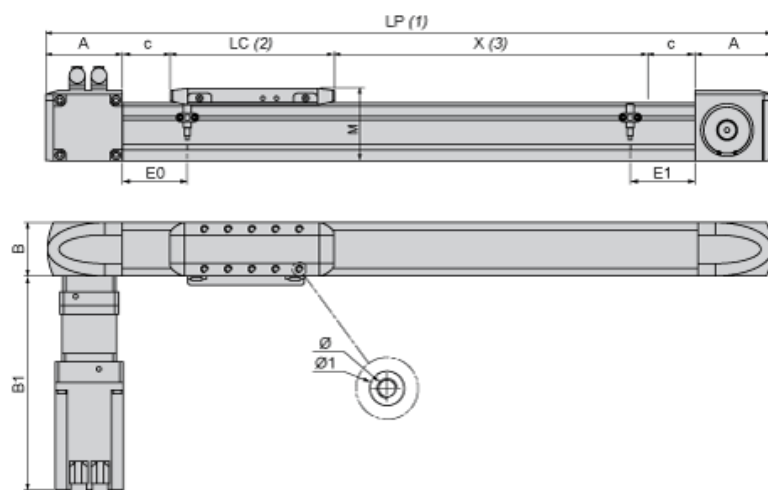
## Offer Sustainability

California proposition 65	WARNING: This product can expose you to chemicals including: Lead and lead compounds which is known to the State of California to cause Carcinogen & Reproductive harm. For more information go to <a href="http://www.p65warnings.ca.gov">www.p65warnings.ca.gov</a>
REACH free of SVHC	Yes
EU RoHS Directive	Pro-active compliance (Product out of EU RoHS legal scope) <a href="#">EU RoHS Declaration</a>
Mercury free	Yes
RoHS exemption information	<a href="#">Yes</a>
China RoHS Regulation	<a href="#">China RoHS Declaration</a>
WEEE	The product must be disposed on European Union markets following specific waste collection and never end up in rubbish bins.

## Contractual warranty

Warranty	18 months
----------	-----------

## Size Characteristics



- (1) LP : total length of axis  
(2) LC : length of carriage  
(3) X : Stroke, refer to product characteristics.

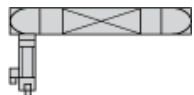
A	mm	146
in.	5.75	
B	mm	110
in.	4.33	
B1	mm	360
in.	14.17	
c	mm	40
in.	1.57	
E0	mm	110
in.	4.33	
E1	mm	110
in.	4.33	
LC	mm	310
in.	12.20	
LP	mm	= 372 + LC + X
in.	= 14.64 + LC + X	
M	mm	135
in.	5.31	
Ø	mm	M8 X 18
in.	M8 X 0.70	
Ø1	mm	12 <sup>H7</sup> X 2.1
in.	12 <sup>H7</sup> X 0.08	

---

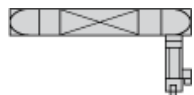
## Servo Motor Mounting

---

Standard servo motor mounting



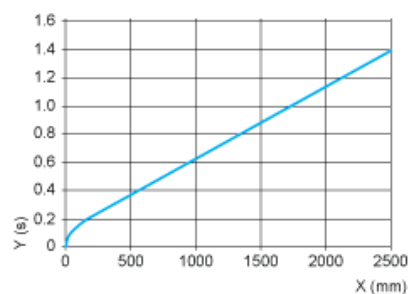
Servo motor mounted on the left



---

Axis Positioning Time as a Function of the Stroke

---



X : Stroke

Y : Positioning time

---

Forces and Torques Exerted on the Lexium PAS E Portal Axis

---

