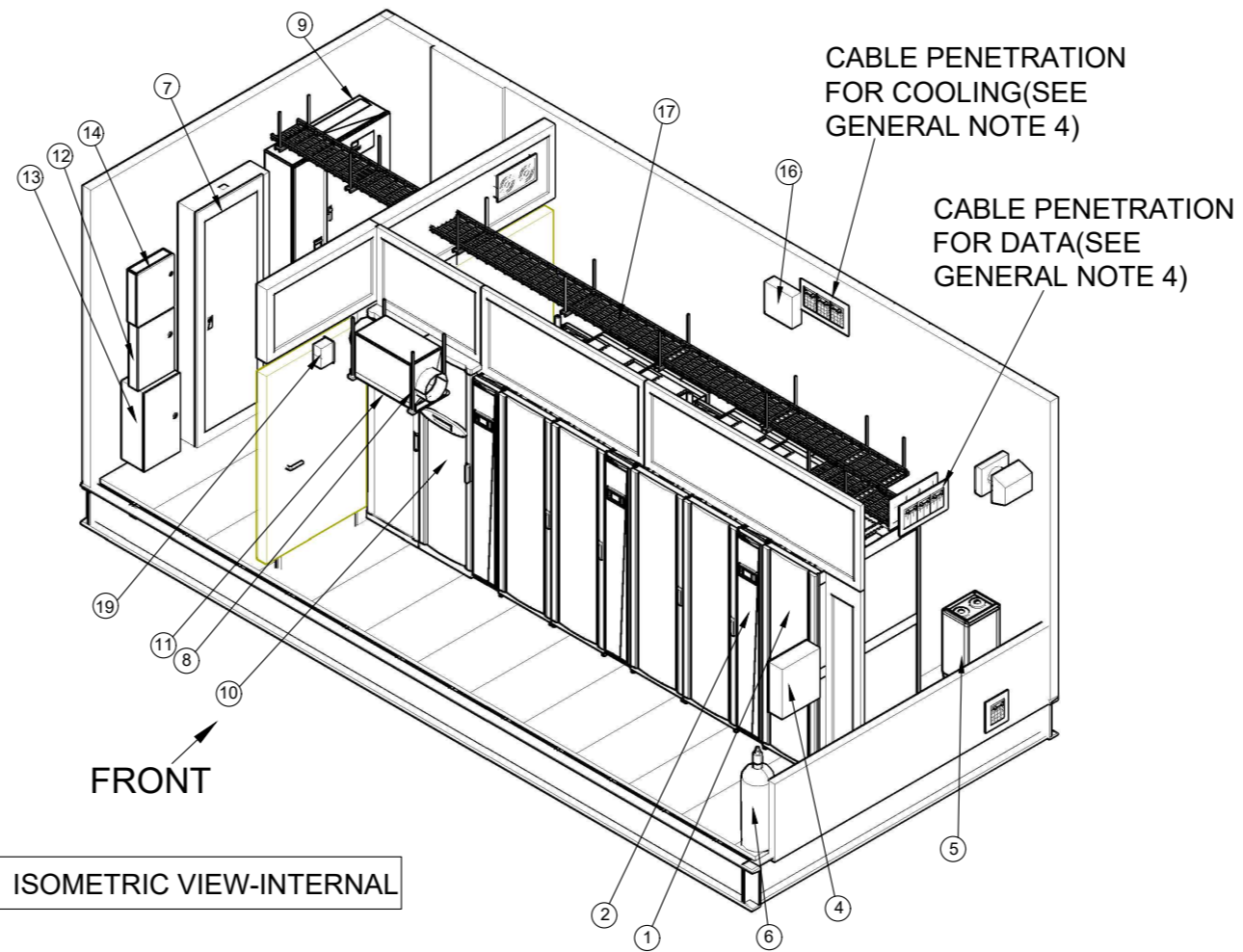
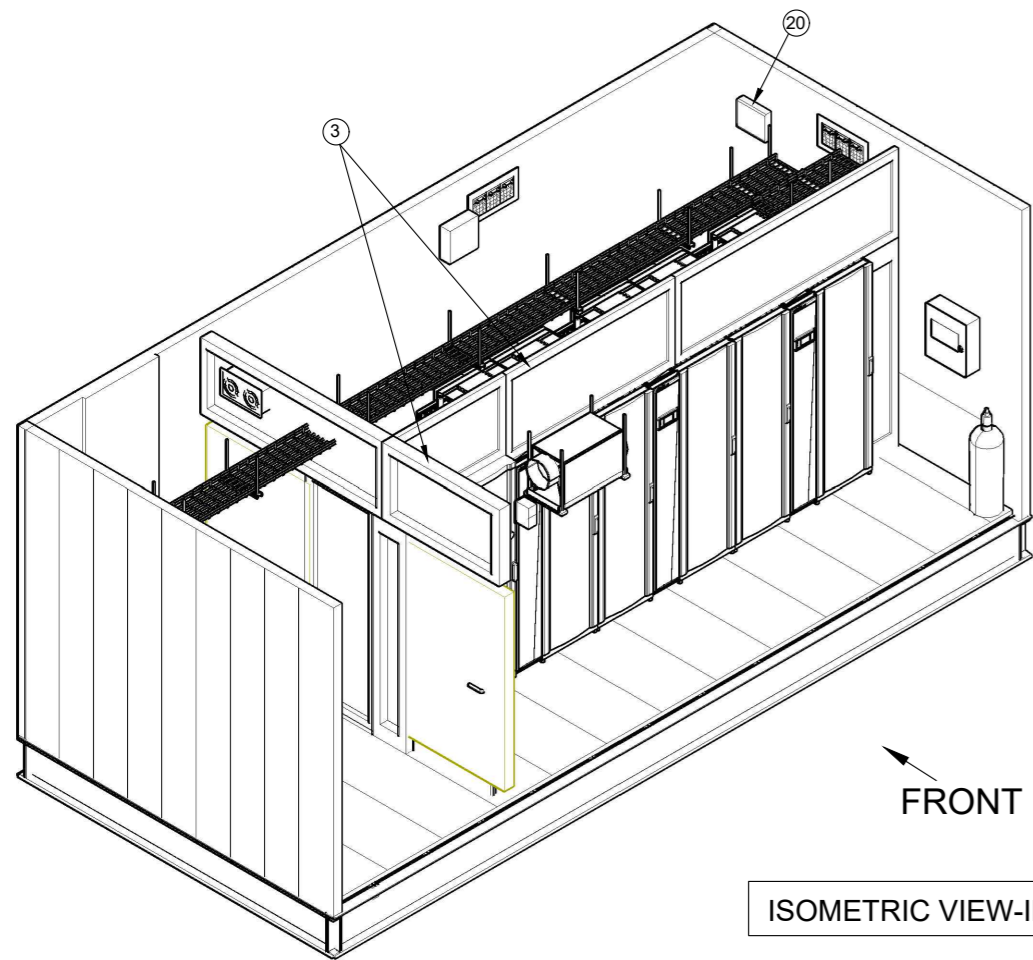


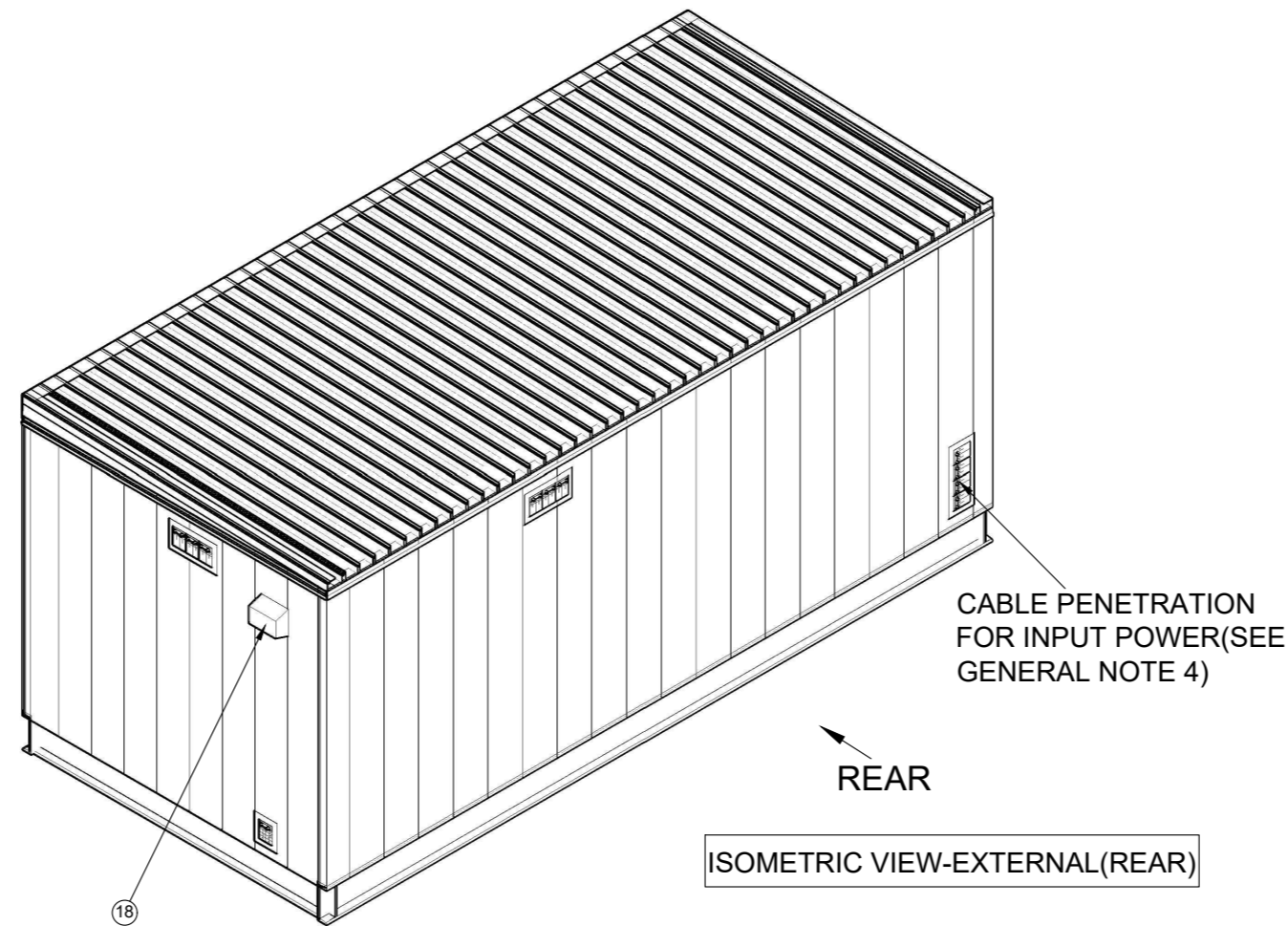
ISOMETRIC VIEW-EXTERNAL(FRONT)



ISOMETRIC VIEW-INTERNAL



ISOMETRIC VIEW-INTERNAL



ISOMETRIC VIEW-EXTERNAL(REAR)

**NOT FOR CONSTRUCTION**

\* - UNLESS OTHERWISE SPECIFIED QUANTITY IS ONE

SL.NO.	DESCRIPTION*
1	IT Racks-(qty 5) 42Ux600x1200
2	Inrow cooling units-ACRD301(qty 3)
3	Aisle Containment
4	Fire Alarm Control Panel
5	Humidifier(Optional)
6	Fire Suppression Cylinder
7	208V Main Distribution Panel
8	De-Humidifier
9	ASCO-300 Automatic Transfer Switch(Service Entrance)
10	UPS Symmetra PX40 with Batteries
11	Power Distribution Cabinet for Symmetra PX40 UPS
12	Generator Annunciator Panel(Optional)
13	Control Panel
14	Access Control Panel(Optional)
15	120V Receptacle(Typical, see sectional views)
16	DX-Control Panel
17	Cable Tray(Typical)
18	Energy Recovery Ventilator System
19	Dedicated receptacle for de-humidifier
20	Climate controller(Optional)

**GENERAL NOTES:**

1. INSTALLATION SHALL COMPLY WITH ALL APPLICABLE NATIONAL, STATE AND LOCAL CODES.
2. PLEASE REFER TO PRODUCT DOCUMENTATION FOR FURTHER INFORMATION.
3. UNLESS OTHERWISE SPECIFIED, ALL DIMENSIONS ARE IN INCHES[MILLIMETERS].
4. REFER TO ELECTRICAL DRAWINGS FOR OBTAINING CONDUIT SIZES AND THE EXACT LOCATIONS OF CABLE/CONDUIT PENETRATIONS FOR INPUT POWER, DATA CABLES AND COOLING SYSTEM.
5. REFER TO THE ELECTRICAL DRAWINGS FOR SPECIFIC DETAILS ON THE ELECTRICAL SYSTEM.

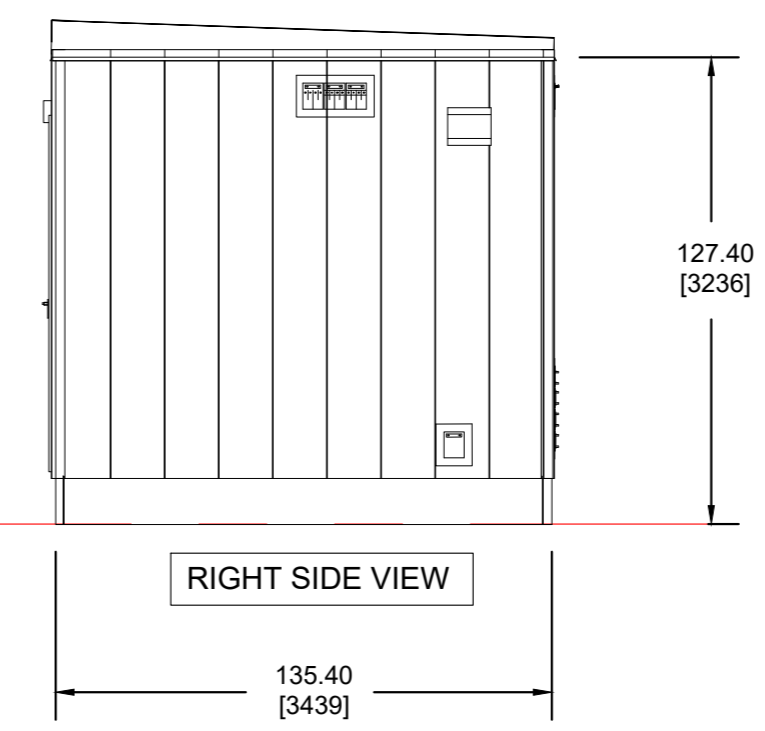
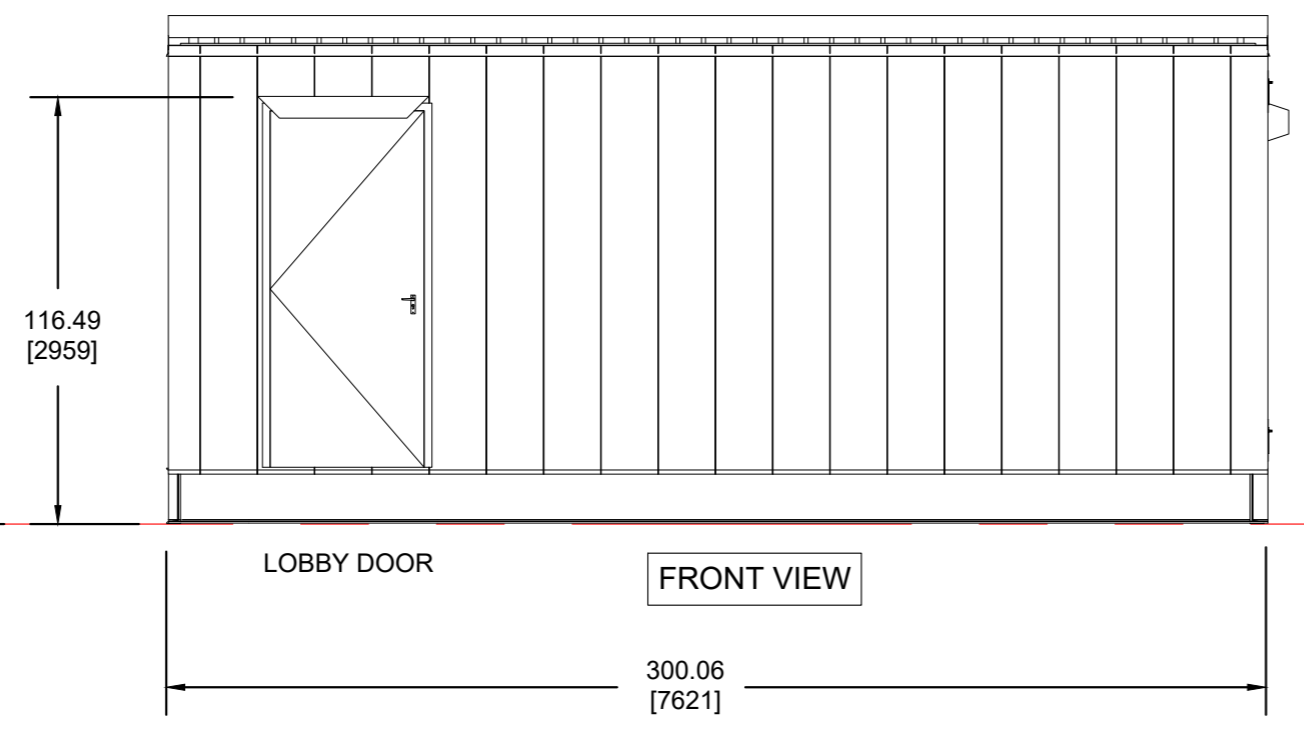
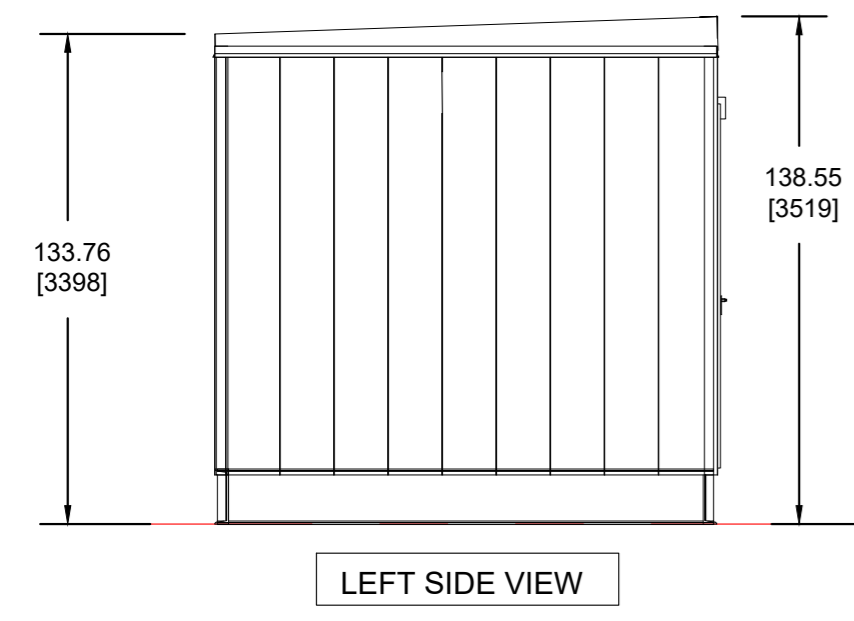
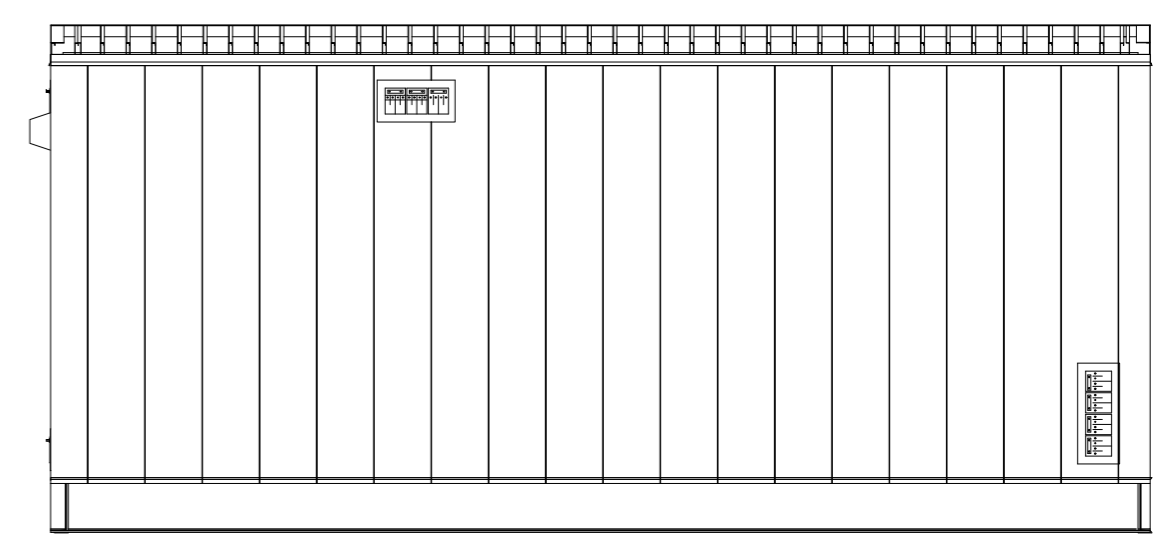
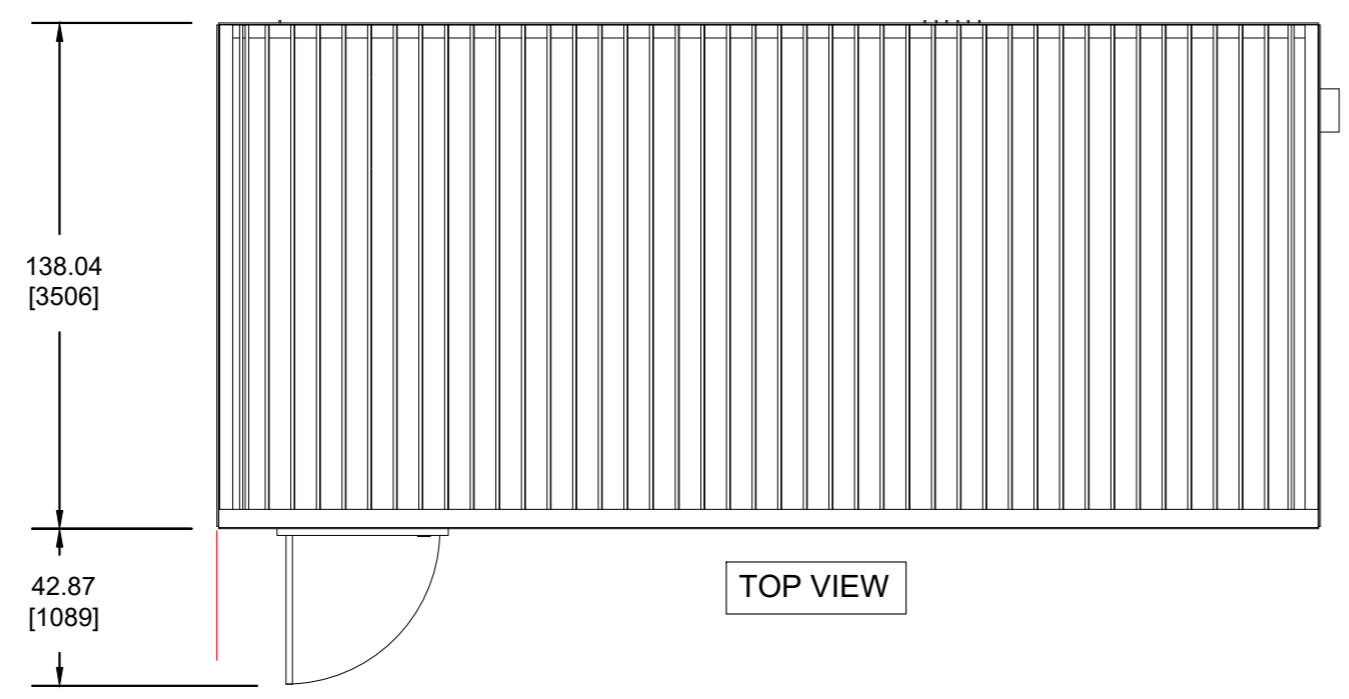
REV	DESCRIPTION	DRWN	DATE	ENGR	DATE	APPR	DATE
0	THIS DRAWING IS BASED ON DRAWING NUMBER PLACEHOLDER - INITIAL RELEASE		DD-MMM-YY				

REVISIONS	
<p>THIS DRAWING AND SPECIFICATIONS HEREIN ARE THE PROPERTY OF SCHNEIDER ELECTRIC AND SHALL NOT BE COPIED, REPRODUCED OR USED IN WHOLE OR IN PART, AS THE BASIS FOR THE MANUFACTURE OR SALE OF ITEMS WITHOUT WRITTEN PERMISSION FROM SCHNEIDER ELECTRIC. THIS DRAWING IS BASED UPON LATEST AVAILABLE INFORMATION AND IS SUBJECT TO CHANGE WITHOUT NOTICE.</p>	<p>TITLE: PREFAB CONFIGURATION-3 40KW, INROW COOLING, 5-RACKS INPUT - 208V,3PH,4W OUTPUT - 208V,3PH,4W ISOMETRIC VIEWS</p> <p>DWG NO: PFMIEC040D1N05D DRAWN: K.NAGENDRA 07-AUG-19 ENGINEER: X.XXX DD-MMM-YY APPROVED: X.XXX DD-MMM-YY</p> <p>PROJECT: INT01CH4/DESIGN PORTAL IS# SHEET 1 OF 3</p>



NOT FOR CONSTRUCTION

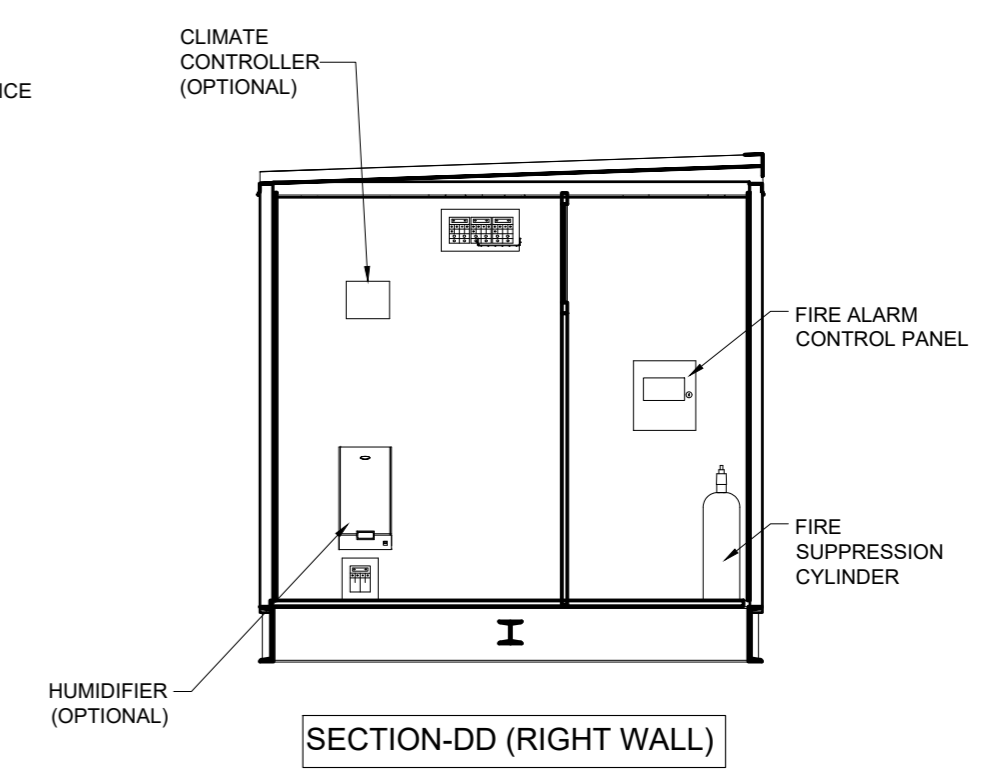
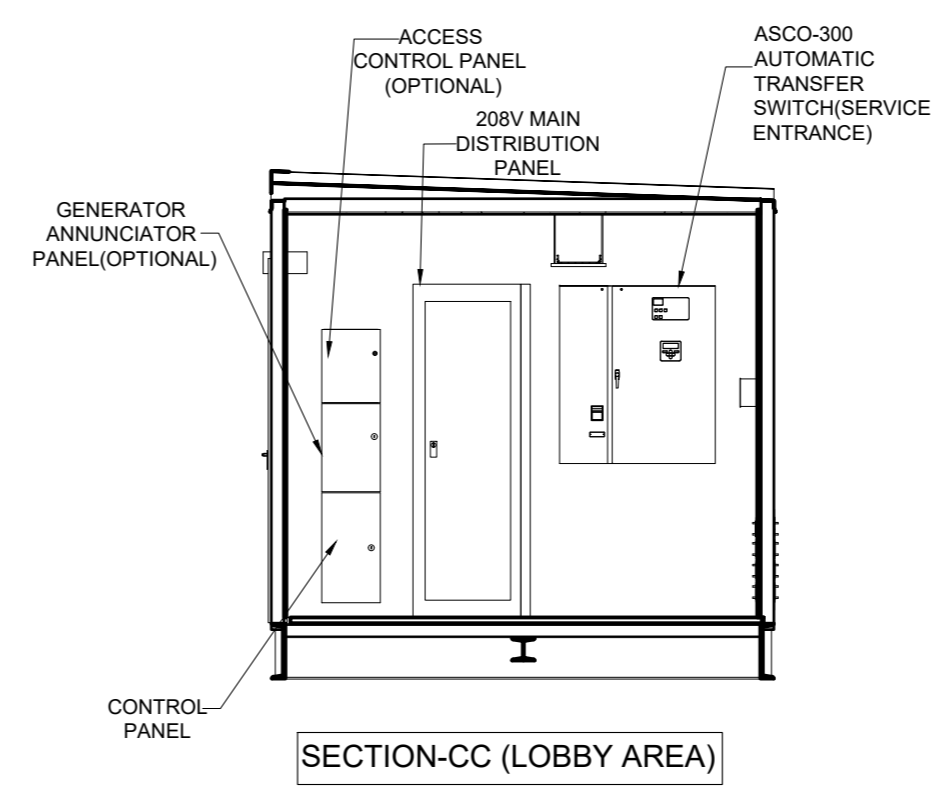
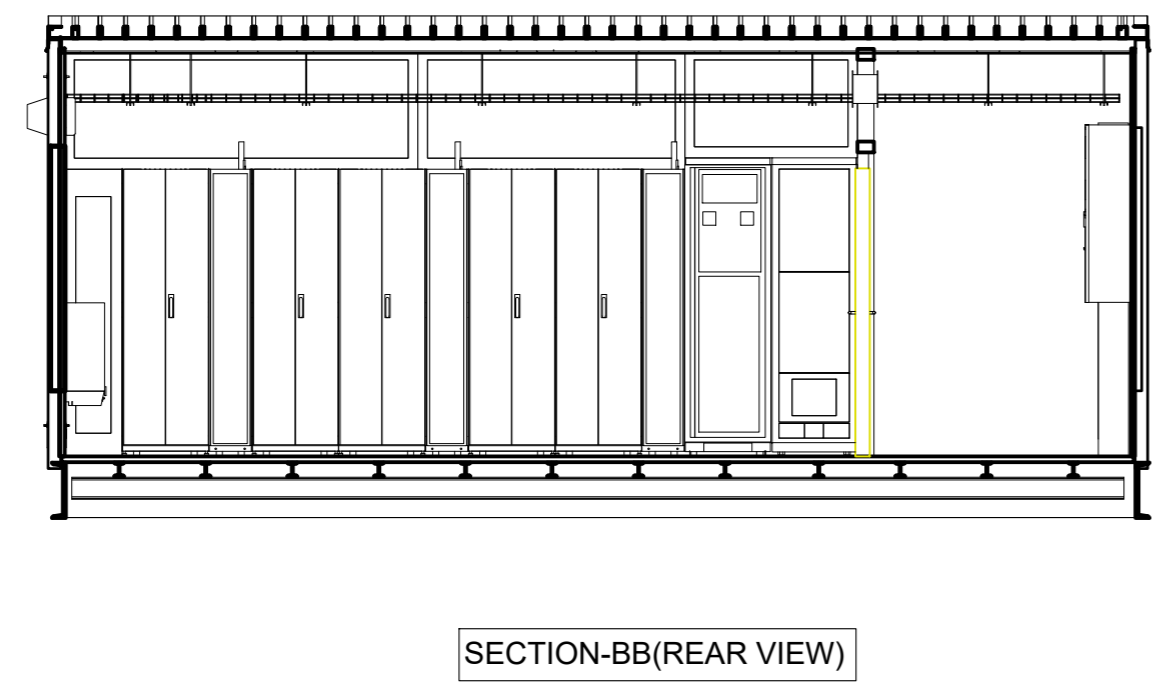
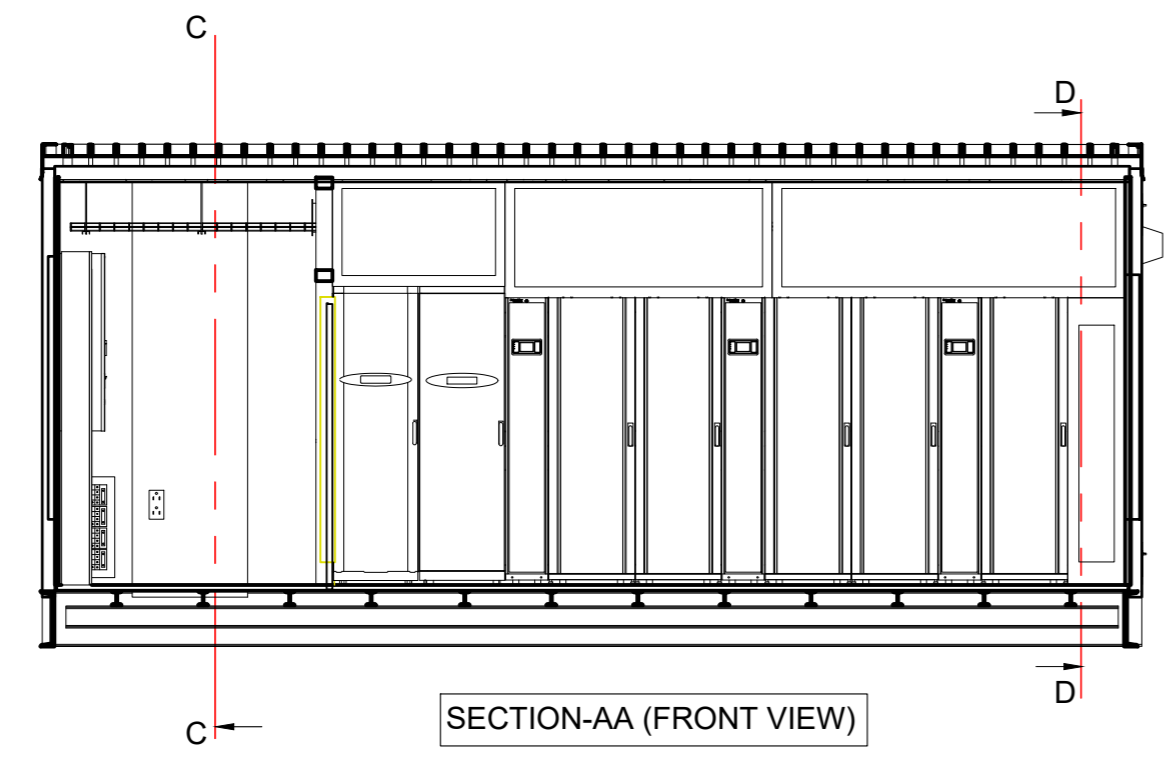
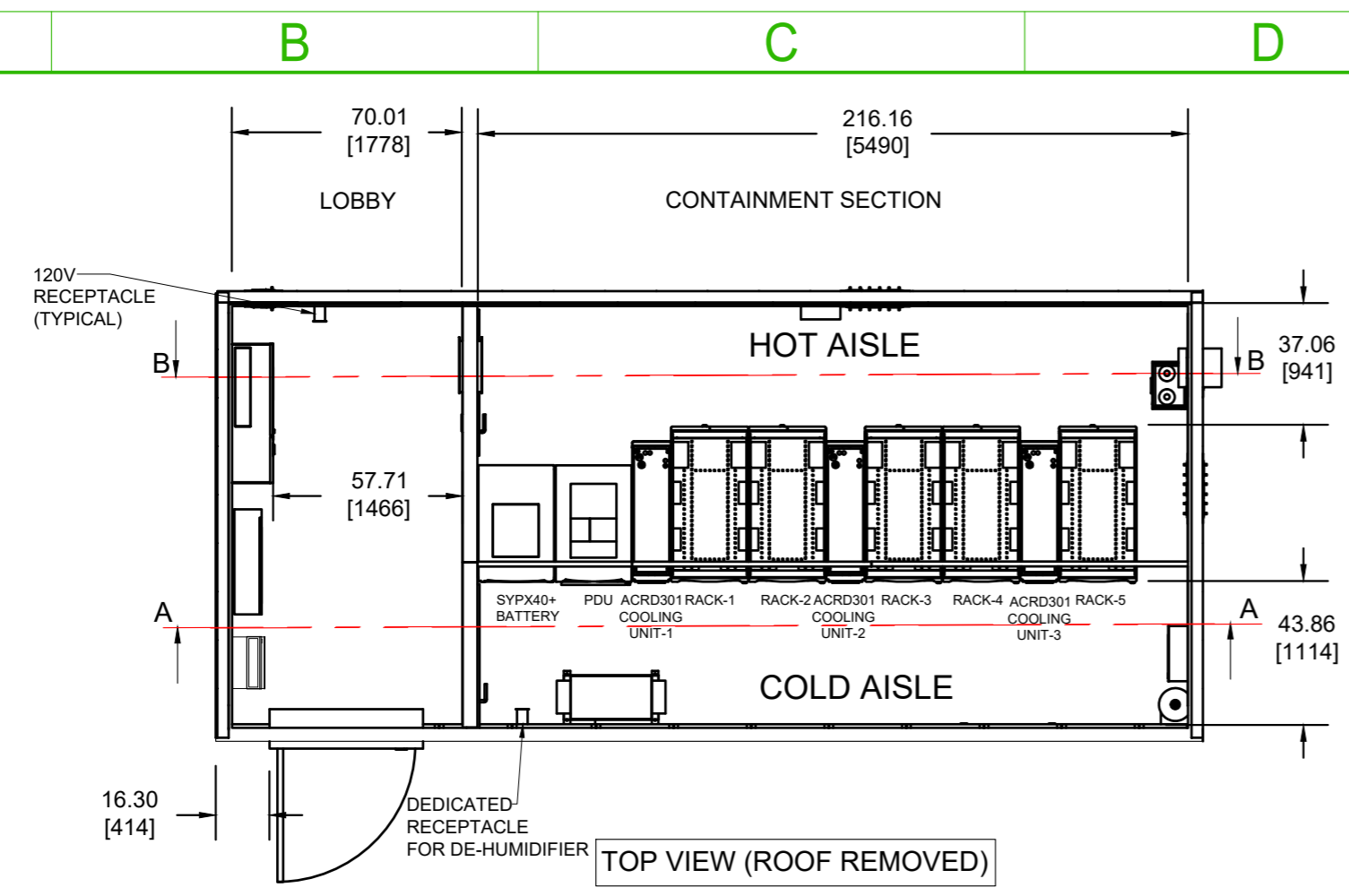


**GENERAL NOTES:**

1. INSTALLATION SHALL COMPLY WITH ALL APPLICABLE NATIONAL, STATE AND LOCAL CODES.
2. PLEASE REFER TO PRODUCT DOCUMENTATION FOR FURTHER INFORMATION.
3. UNLESS OTHERWISE SPECIFIED, ALL DIMENSIONS ARE IN INCHES[MILLIMETERS].
4. REFER TO ELECTRICAL DRAWINGS FOR OBTAINING CONDUIT SIZES AND THE EXACT LOCATIONS OF CABLE/CONDUIT PENETRATIONS FOR INPUT POWER, DATA CABLES AND COOLING SYSTEM.
5. REFER TO THE ELECTRICAL DRAWINGS FOR SPECIFIC DETAILS ON THE ELECTRICAL SYSTEM.

FILENAME/PATH:						
0	THIS DRAWING IS BASED ON DRAWING NUMBER PLACEHOLDER - INITIAL RELEASE					DD-MMM-YY
REV	DESCRIPTION	DRWN	DATE	ENGR	DATE	APPR
REVISIONS						
THIS DRAWING AND SPECIFICATIONS HEREIN ARE THE PROPERTY OF SCHNEIDER ELECTRIC AND SHALL NOT BE COPIED, REPRODUCED OR USED IN WHOLE OR IN PART, AS THE BASIS FOR THE MANUFACTURE OR SALE OF ITEMS WITHOUT WRITTEN PERMISSION FROM SCHNEIDER ELECTRIC. THIS DRAWING IS BASED UPON LATEST AVAILABLE INFORMATION AND IS SUBJECT TO CHANGE WITHOUT NOTICE.				TITLE: PREFAB CONFIGURATION-3 40KW, INROW COOLING, 5-RACKS INPUT - 208V,3PH,4W OUTPUT - 208V,3PH,4W GENERAL ARRANGEMENT		DWG NO: PFMIEC040D1N05D DRAWN: K.NAGENDRA ENGINEER: X XXX APPROVED: X XXX
		PROJECT: NTOUCHE/DESIGN PORTAL ISV#		SHEET 2 OF 3		REV: A/0 DATE: 07-AUG-19 THIRD ANGLE PROJECTION

NOT FOR CONSTRUCTION



**GENERAL NOTES:**

1. INSTALLATION SHALL COMPLY WITH ALL APPLICABLE NATIONAL, STATE AND LOCAL CODES.
2. PLEASE REFER TO PRODUCT DOCUMENTATION FOR FURTHER INFORMATION.
3. UNLESS OTHERWISE SPECIFIED, ALL DIMENSIONS ARE IN INCHES [MILLIMETERS].
4. REFER TO ELECTRICAL DRAWINGS FOR OBTAINING CONDUIT SIZES AND THE EXACT LOCATIONS OF CABLE/CONDUIT PENETRATIONS FOR INPUT POWER, DATA CABLES AND COOLING SYSTEM.
5. REFER TO THE ELECTRICAL DRAWINGS FOR SPECIFIC DETAILS ON THE ELECTRICAL SYSTEM.

FILENAME/PATH:										
0	THIS DRAWING IS BASED ON DRAWING NUMBER PLACEHOLDER - INITIAL RELEASE							DD-MMM-YY		
REV	DESCRIPTION	DRWN	DATE	ENGR	DATE	APPR	DATE			
REVISIONS										
THIS DRAWING AND SPECIFICATIONS HEREIN ARE THE PROPERTY OF SCHNEIDER ELECTRIC AND SHALL NOT BE COPIED, REPRODUCED OR USED IN WHOLE OR IN PART, AS THE BASIS FOR THE MANUFACTURE OR SALE OF ITEMS WITHOUT WRITTEN PERMISSION FROM SCHNEIDER ELECTRIC. THIS DRAWING IS BASED UPON LATEST AVAILABLE INFORMATION AND IS SUBJECT TO CHANGE WITHOUT NOTICE.		<b>Schneider Electric</b>		TITLE: PREFAB CONFIGURATION-3 40KW, INROW COOLING, 5-RACKS INPUT - 208V,3PH,4W OUTPUT - 208V,3PH,4W SECTIONAL VIEWS			DWG NO: PFMIEC040D1N05D		REV: A/0	
PROJECT: INTouch/DESIGN PORTAL IS#		SHEET 3 OF 3		DRAWN: K.NAGENDRA		07-AUG-19		THIRD ANGLE PROJECTION		
				ENGINEER: X XXX		DD-MMM-YY				
				APPROVED: X XXX		DD-MMM-YY				