



### Main

Range of product	Harmony 9001K
Accessory / separate part type	Legend plate
Accessory / separate part category	Marking accessory
Accessory / separate part destination	Control and signalling units Ø 30 mm (metal range)
Label dimensions	44 x 50 mm
Marking	White PULL TO START/PUSH TO STOP black
Language	English

### Complementary

Mounting diameter	1.18 in (30 mm)
Material	Aluminium
Net Weight	0.01 lb(US) (0.005 kg)

### Ordering and shipping details

Category	"21433 - 9001 ACCESS FOR K,KX,SK
Discount Schedule	CS1
GTIN	00785901042402
Nbr. of units in pkg.	50
Package weight(Lbs)	50 lb(US) (22.68 kg)
Returnability	Yes
Country of origin	US

### Packing Units

Unit Type of Package 1	PCE
Package 1 Height	0.12 in (0.3 cm)
Package 1 width	1.77 in (4.501 cm)
Package 1 Length	1.77 in (4.501 cm)

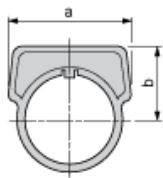
### Offer Sustainability

Sustainable offer status	Green Premium product
California proposition 65	WARNING: This product can expose you to chemicals including: Nickel compounds and Di-isodecyl phthalate (DIDP) which is known to the State of California to cause Carcinogen and Reproductive harm. For more information go to <a href="http://www.p65warnings.ca.gov">www.p65warnings.ca.gov</a>
EU RoHS Directive	Pro-active compliance (Product out of EU RoHS legal scope) <a href="#">EU RoHS Declaration</a>
Mercury free	Yes
RoHS exemption information	<a href="#">Yes</a>
China RoHS Regulation	<a href="#">China RoHS Declaration</a>
Environmental Disclosure	<a href="#">Product Environmental Profile</a>

### Contractual warranty

Warranty	18 months
----------	-----------

Dimensions



a		b	
mm	in.	mm	in.
44.5	1.75	31.4	1.24