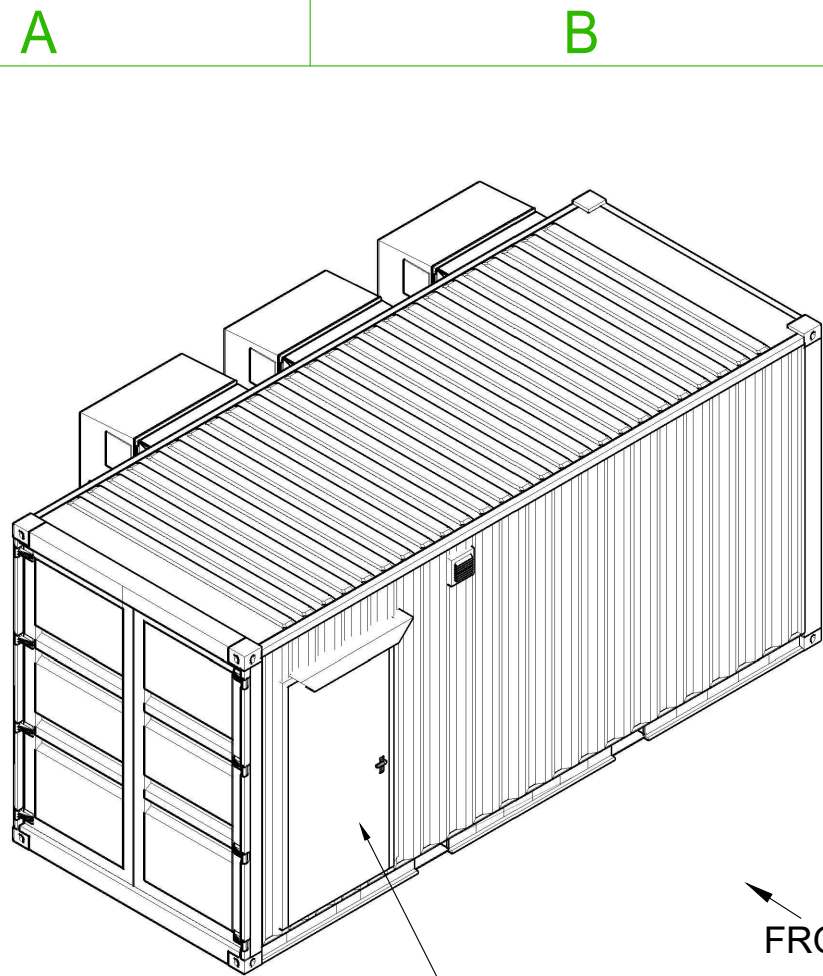


NOT FOR CONSTRUCTION

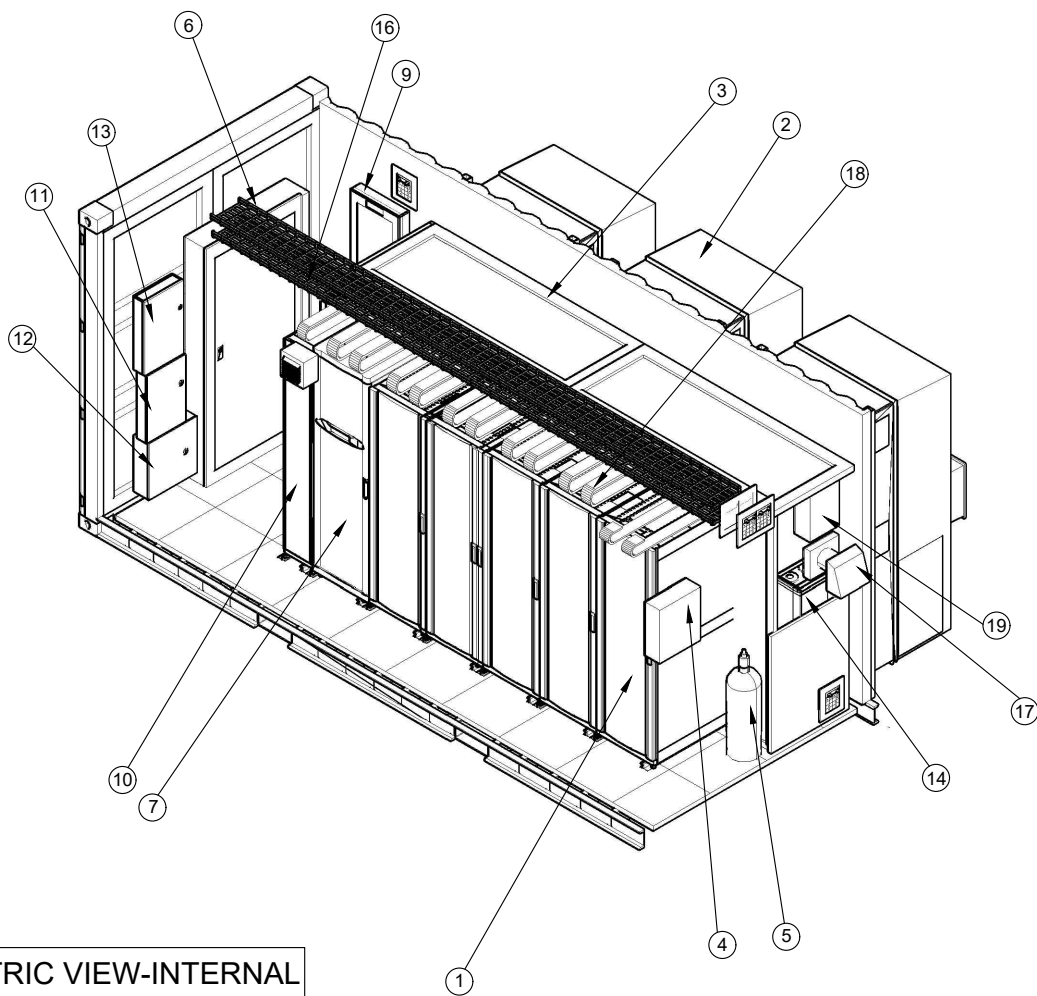
* UNLESS OTHERWISE SPECIFIED QUANTITY IS ONE

SL.NO.	DESCRIPTION
1	IT Racks-(qty 5) 42Ux600x1200
2	Wall Mounted Cooling Unit- Bard W72(Typical, Qty=3)
3	Aisle Containment
4	Fire Alarm Control Panel
5	Fire Suppression Cylinder
6	208V Main Distribution Panel(Service Entrance)
7	UPS Symmetra PX40 with Batteries
8	Wall Mount Maintenance Bypass Panel
9	Distribution Panel(Critical Loads)
10	Side Car for UPS
11	Generator Annunciator Panel(Optional)
12	Control Panel
13	Access Control Panel(Optional)
14	Humidifier(Optional)
15	DX-Control Panel
16	Cable Tray(Typical)
17	Energy Recovery Ventilator System
18	E-Chains(Typical)
19	Climate Controller(Optional)



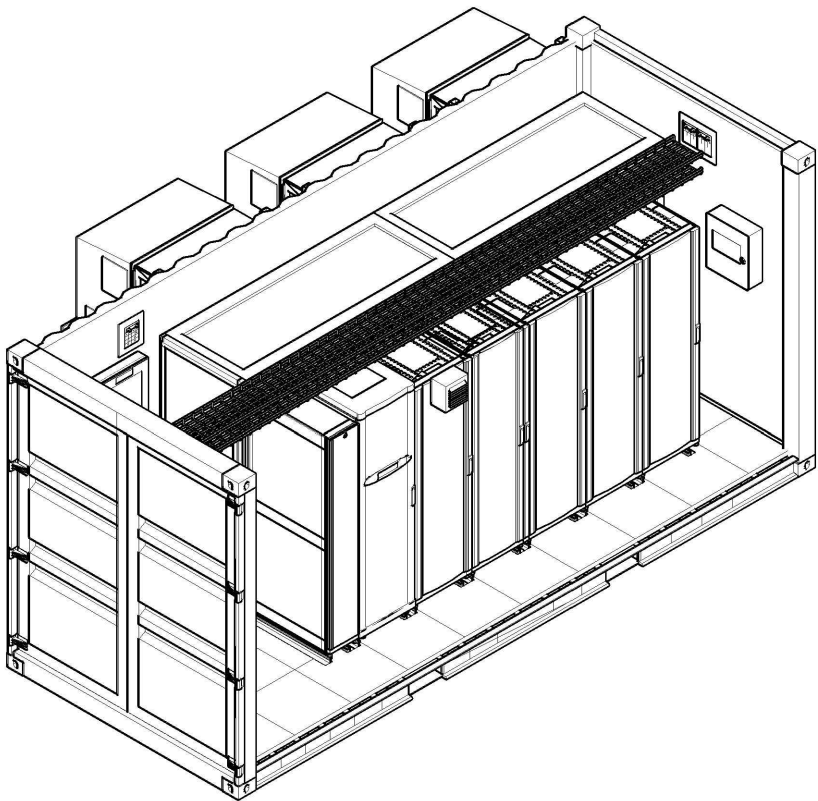
MAIN ENTRANCE

ISOMETRIC VIEW-EXTERNAL(FRONT)



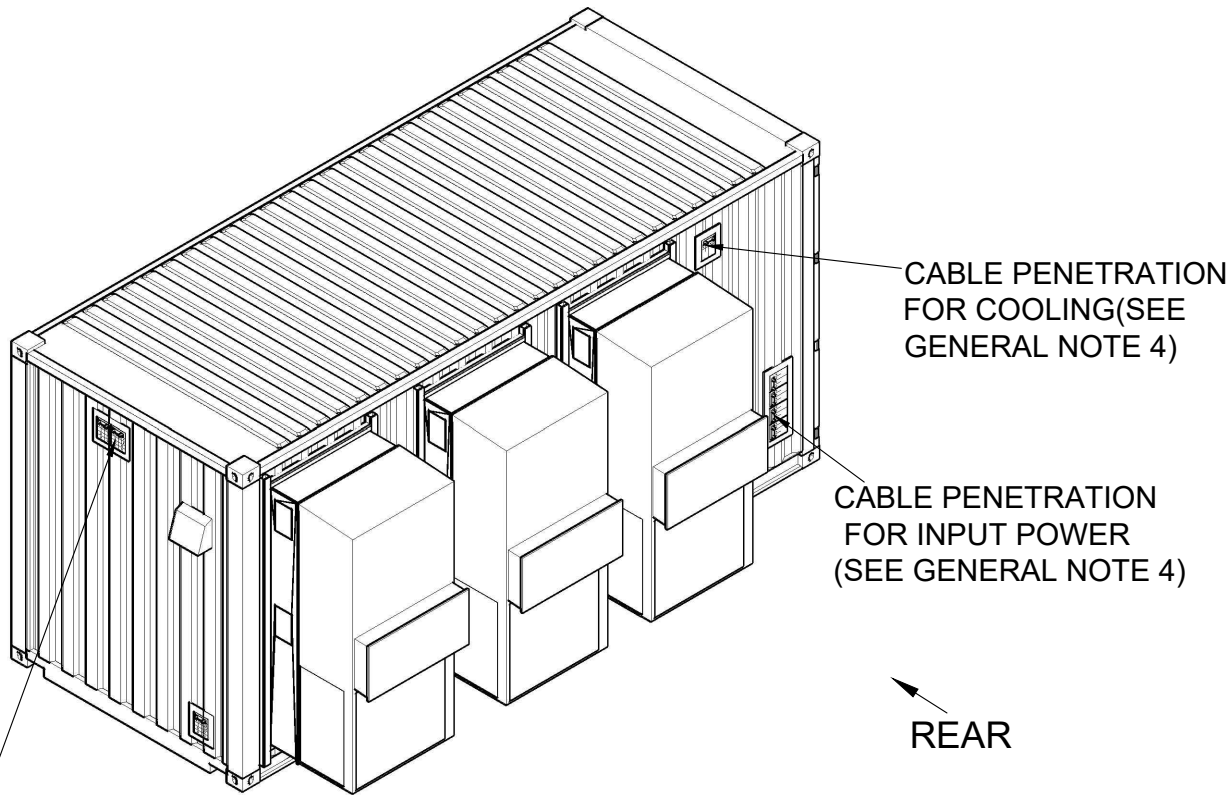
FRONT

ISOMETRIC VIEW-INTERNAL



FRONT

ISOMETRIC VIEW-INTERNAL



REAR

ISOMETRIC VIEW-EXTERNAL(REAR)

CABLE PENETRATION FOR DATA (SEE GENERAL NOTE 4)

CABLE PENETRATION FOR COOLING(SEE GENERAL NOTE 4)

CABLE PENETRATION FOR INPUT POWER (SEE GENERAL NOTE 4)

GENERAL NOTES:

- 1.INSTALLATION SHALL COMPLY WITH ALL APPLICABLE NATIONAL, STATE AND LOCAL CODES.
- 2.PLEASE REFER TO PRODUCT DOCUMENTATION FOR FURTHER INFORMATION.
- 3.UNLESS OTHERWISE SPECIFIED, ALL DIMENSIONS ARE IN INCHES[MILLIMETERS].
- 4.REFER TO ELECTRICAL DRAWINGS FOR OBTAINING CONDUIT SIZES AND THE EXACT LOCATIONS OF CABLE/CONDUIT PENETRATIONS FOR INPUT POWER, DATA CABLES AND COOLING SYSTEM.
- 5.REFER TO THE ELECTRICAL DRAWINGS FOR SPECIFIC DETAILS ON THE ELECTRICAL SYSTEM.

FILENAME/PATH:

0	THIS DRAWING IS BASED ON DRAWING NUMBER PLACEHOLDER - INITIAL RELEASE	DD-MMM-YY					
REV	DESCRIPTION	DRWN	DATE	ENGR	DATE	APPR	DATE

REVISIONS

THIS DRAWING AND SPECIFICATIONS HEREIN ARE THE PROPERTY OF SCHNEIDER ELECTRIC AND SHALL NOT BE COPIED, REPRODUCED OR USED IN WHOLE OR IN PART, AS THE BASIS FOR THE MANUFACTURE OR SALE OF ITEMS WITHOUT WRITTEN PERMISSION FROM SCHNEIDER ELECTRIC. THIS DRAWING IS BASED UPON LATEST AVAILABLE INFORMATION AND IS SUBJECT TO CHANGE WITHOUT NOTICE.

Schneider Electric

TITLE: PREFAB CONFIGURATION-6
25KW(N+1), ROOM COOLING, 5-RACKS
INPUT - 208V,3PH,4W
OUTPUT - 208V,3PH,4W
ISOMETRIC VIEWS

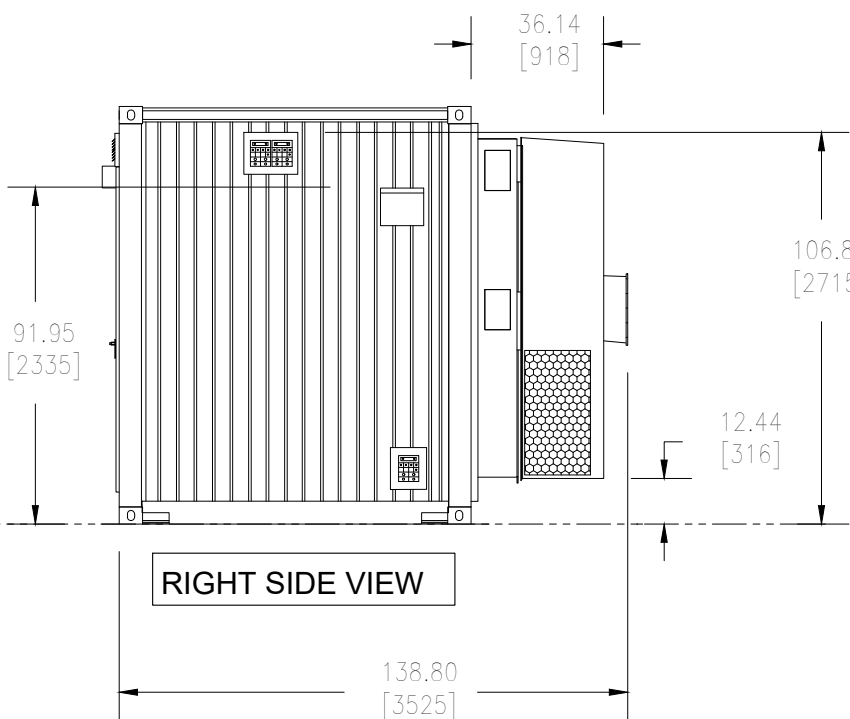
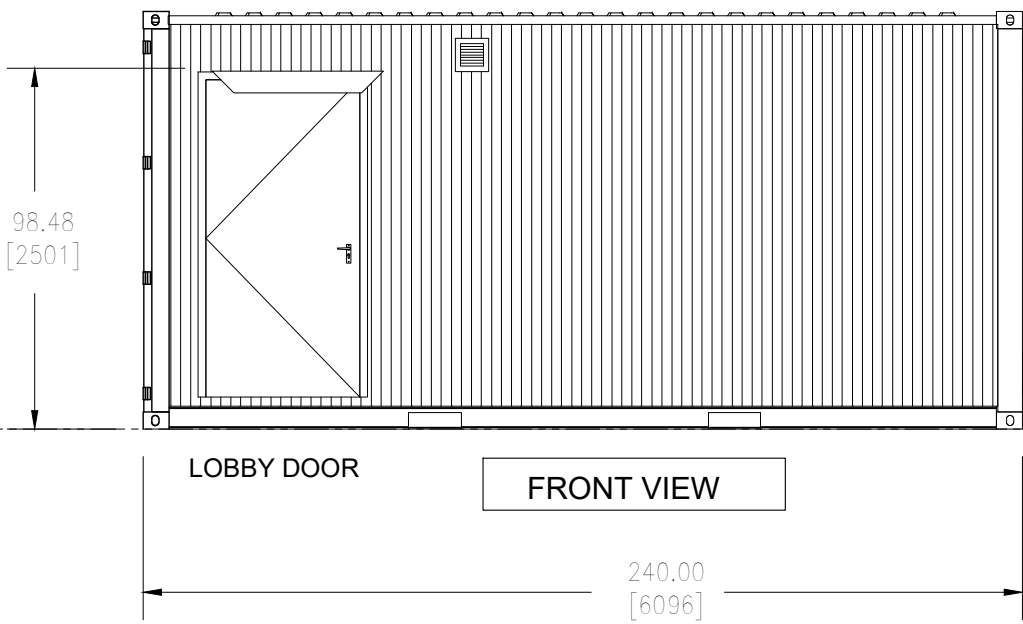
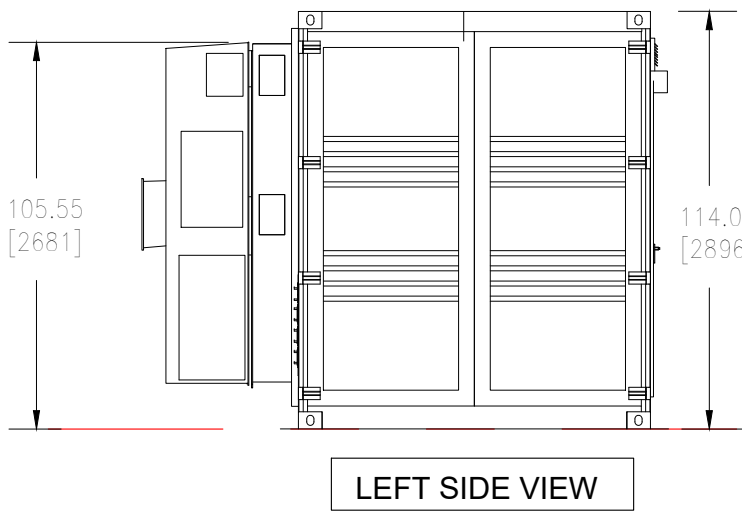
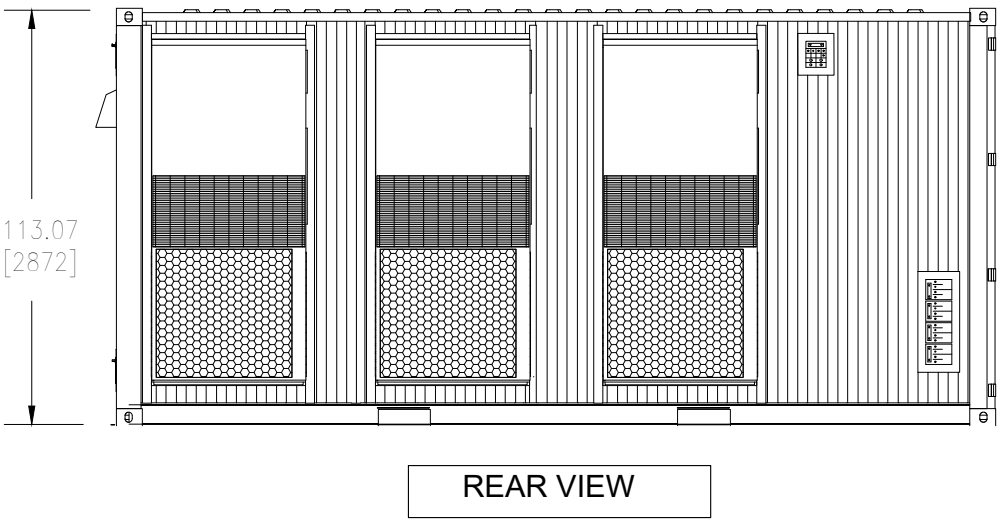
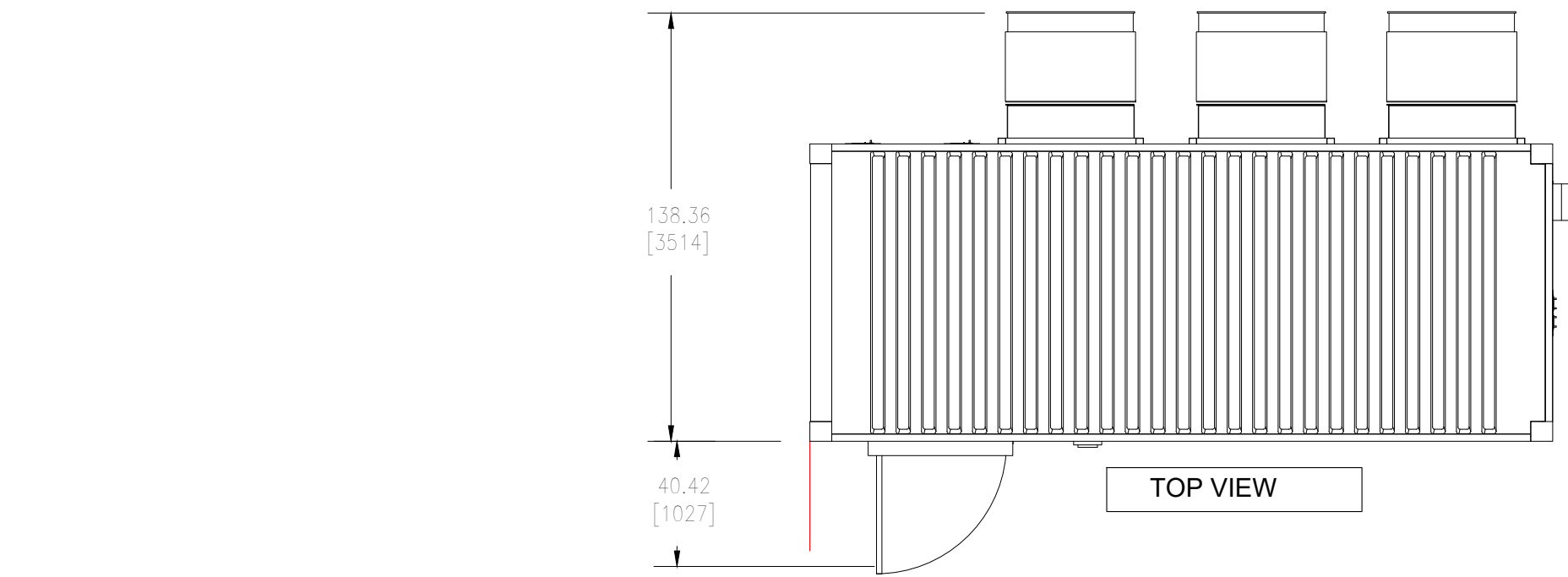
DWG NO: PFMICC025W1N05D
DRAWN: K.NAGENDRA
ENGINEER: X XXX
APPROVED: X XXX

REV: A/0
THIRD ANGLE PROJECTION

PROJECT: INTouch# / DESIGN PORTAL IS# / SHEET 1 OF 3


DATE: 07-AUG-19

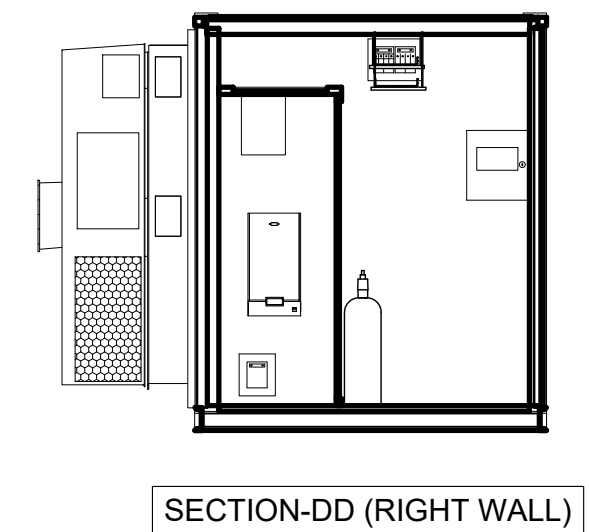
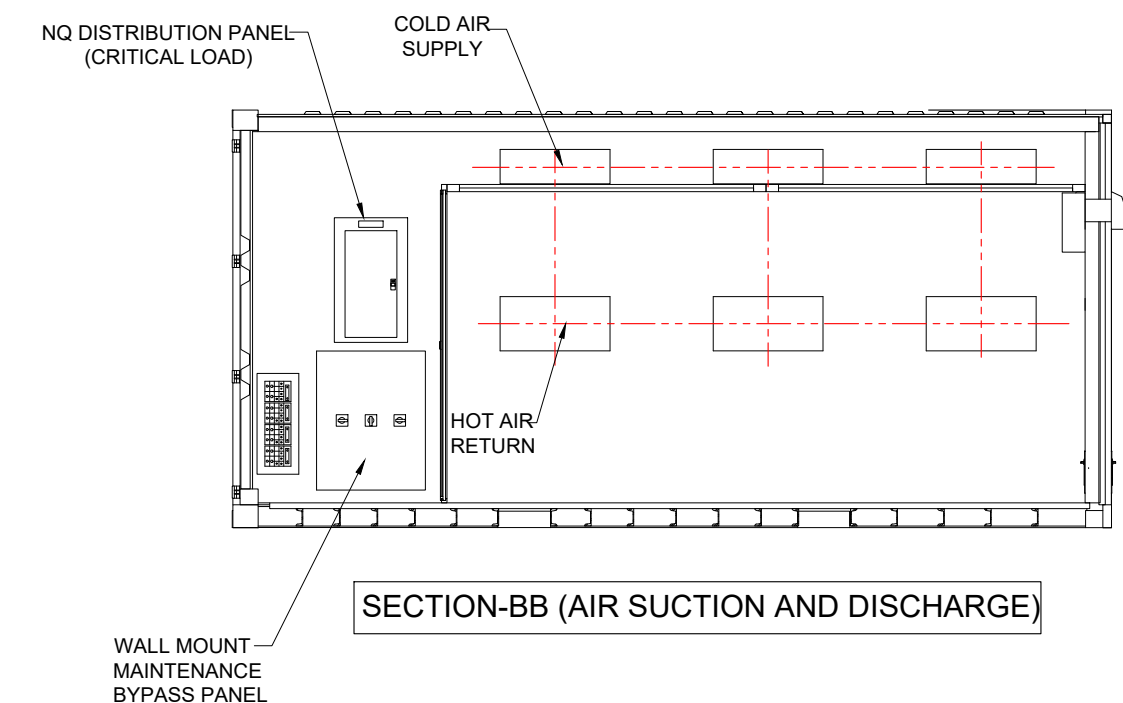
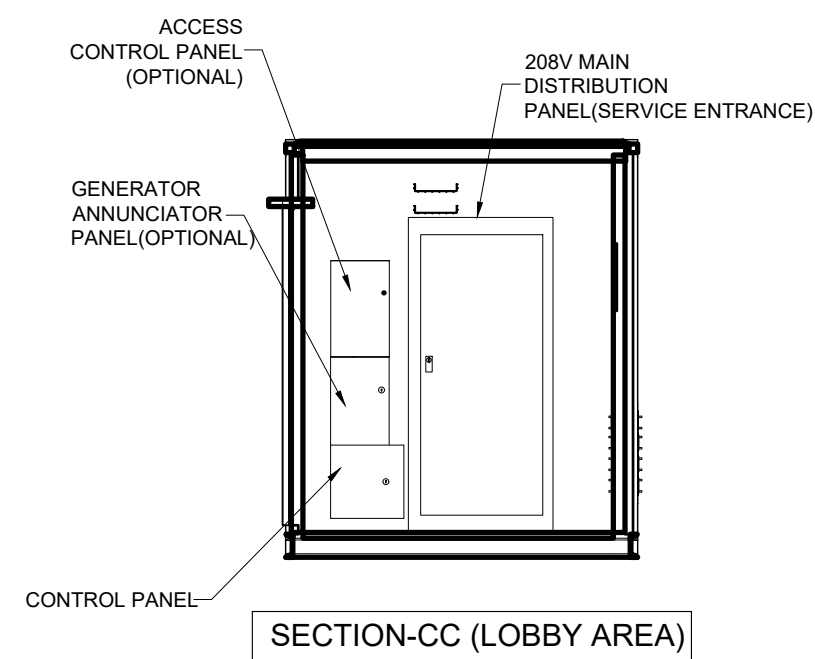
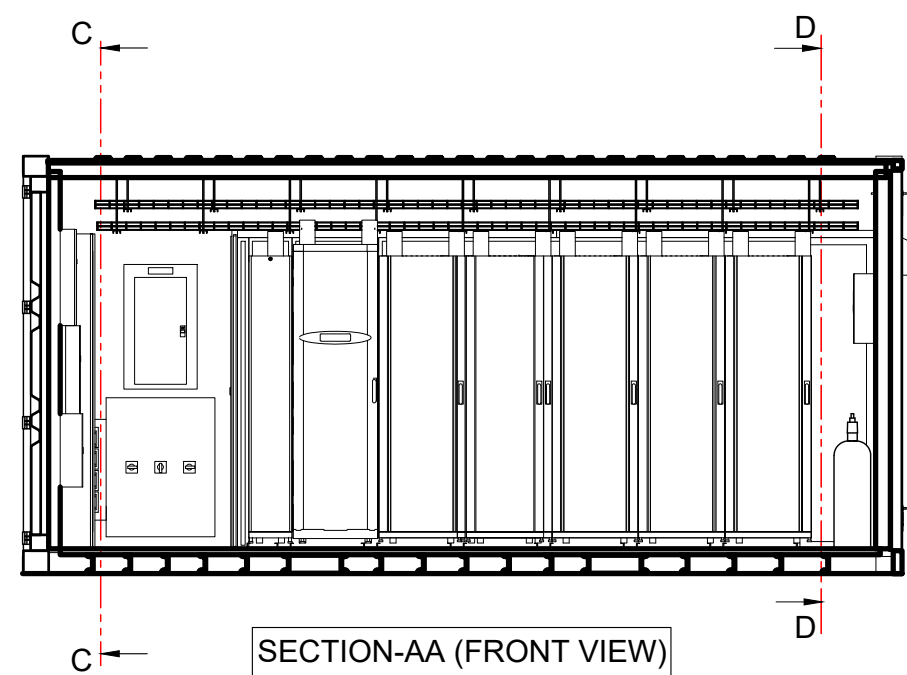
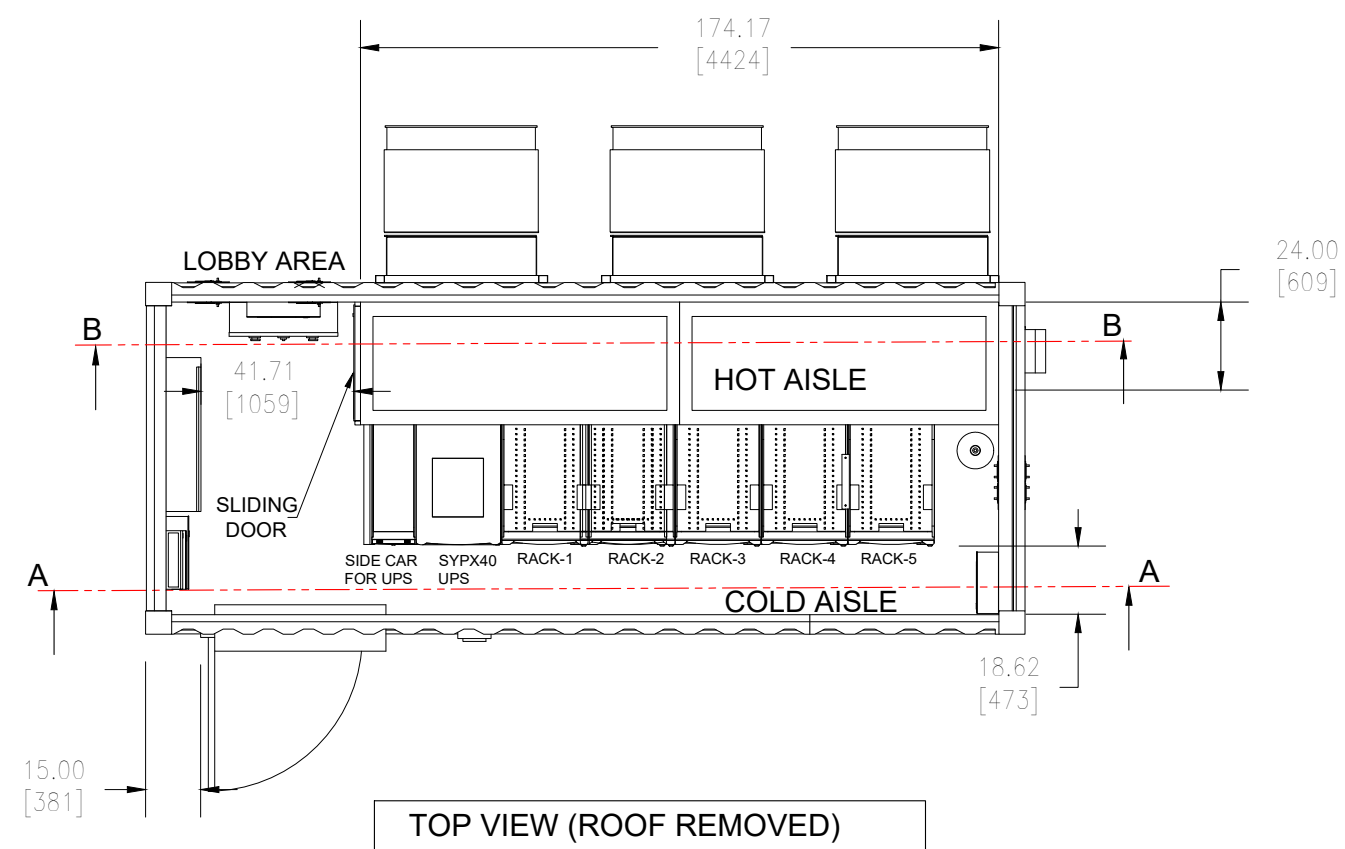
NOT FOR CONSTRUCTION



GENERAL NOTES:

- 1. INSTALLATION SHALL COMPLY WITH ALL APPLICABLE NATIONAL, STATE AND LOCAL CODES.
- 2. PLEASE REFER TO PRODUCT DOCUMENTATION FOR FURTHER INFORMATION.
- 3. UNLESS OTHERWISE SPECIFIED, ALL DIMENSIONS ARE IN INCHES[MILLIMETERS].
- 4. REFER TO ELECTRICAL DRAWINGS FOR OBTAINING CONDUIT SIZES AND THE EXACT LOCATIONS OF CABLE/CONDUIT PENETRATIONS FOR INPUT POWER, DATA CABLES AND COOLING SYSTEM.
- 5. REFER TO THE ELECTRICAL DRAWINGS FOR SPECIFIC DETAILS ON THE ELECTRICAL SYSTEM.

FILENAME/PATH:														
0	THIS DRAWING IS BASED ON DRAWING NUMBER PLACEHOLDER – INITIAL RELEASE						DD–MMM–YY							
REV	DESCRIPTION					DRWN	DATE	ENGR	DATE	APPR	DATE			
REVISIONS														
THIS DRAWING AND SPECIFICATIONS HEREIN ARE THE PROPERTY OF SCHNEIDER ELECTRIC AND SHALL NOT BE COPIED, REPRODUCED OR USED IN WHOLE OR IN PART, AS THE BASIS FOR THE MANUFACTURE OR SALE OF ITEMS WITHOUT WRITTEN PERMISSION FROM SCHNEIDER ELECTRIC. THIS DRAWING IS BASED UPON LATEST AVAILABLE INFORMATION AND IS SUBJECT TO CHANGE WITHOUT NOTICE.							TITLE: PREFAB CONFIGURATION–6 25KW(N+1), ROOM COOLING, 5–RACKS INPUT – 208V,3PH,4W OUTPUT – 208V,3PH,4W GENERAL ARRANGEMENT			DWG NO: PFMICC025W1N05D			REV: A/0	
							DRAWN: K.NAGENDRA			07–AUG–19		THIRD ANGLE PROJECTION		
							ENGINEER: X XXX			DD–MMM–YY				
							APPROVED: X XXX			DD–MMM–YY				
PROJECT: INTOUCH#/DESIGN PORTAL ISX#					SHEET 2 OF 3			APPROVED: X XXX			DD–MMM–YY			



GENERAL NOTES:

1. INSTALLATION SHALL COMPLY WITH ALL APPLICABLE NATIONAL, STATE AND LOCAL CODES.
2. PLEASE REFER TO PRODUCT DOCUMENTATION FOR FURTHER INFORMATION.
3. UNLESS OTHERWISE SPECIFIED, ALL DIMENSIONS ARE IN INCHES[MILLIMETERS].
4. REFER TO ELECTRICAL DRAWINGS FOR OBTAINING CONDUIT SIZES AND THE EXACT LOCATIONS OF CABLE/CONDUIT PENETRATIONS FOR INPUT POWER, DATA CABLES AND COOLING SYSTEM.
5. REFER TO THE ELECTRICAL DRAWINGS FOR SPECIFIC DETAILS ON THE ELECTRICAL SYSTEM.

FILENAME/PATH:								
0	THIS DRAWING IS BASED ON DRAWING NUMBER PLACEHOLDER – INITIAL RELEASE			DD–MMM–YY				
REV	DESCRIPTION		DRWN	DATE	ENGR	DATE	APPR	DATE
REVISIONS								
<div>THIS DRAWING AND SPECIFICATIONS HEREIN ARE THE PROPERTY OF SCHNEIDER ELECTRIC AND SHALL NOT BE COPIED, REPRODUCED OR USED IN WHOLE OR IN PART, AS THE BASIS FOR THE MANUFACTURE OR SALE OF ITEMS WITHOUT WRITTEN PERMISSION FROM SCHNEIDER ELECTRIC. THIS DRAWING IS BASED UPON LATEST AVAILABLE INFORMATION AND IS SUBJECT TO CHANGE WITHOUT NOTICE.</div> <div>Schneider Electric</div>			TITLE: PREFAB CONFIGURATION–6 25KW(N+1), ROOM COOLING, 5–RACKS INPUT – 208V,3PH,4W OUTPUT – 208V,3PH,4W SECTIONAL VIEWS		DWG NO: PFMICC025W1N05D		REV: A/0	
			DRAWN: K.NAGENDRA 07–AUG–19 DD–MMM–YY		ENGINEER: X XXX DD–MMM–YY		THIRD ANGLE PROJECTION	
			PROJECT: INTOUCH#/DESIGN PORTAL IS# SHEET 3 OF 3 APPROVED: X XXX DD–MMM–YY					