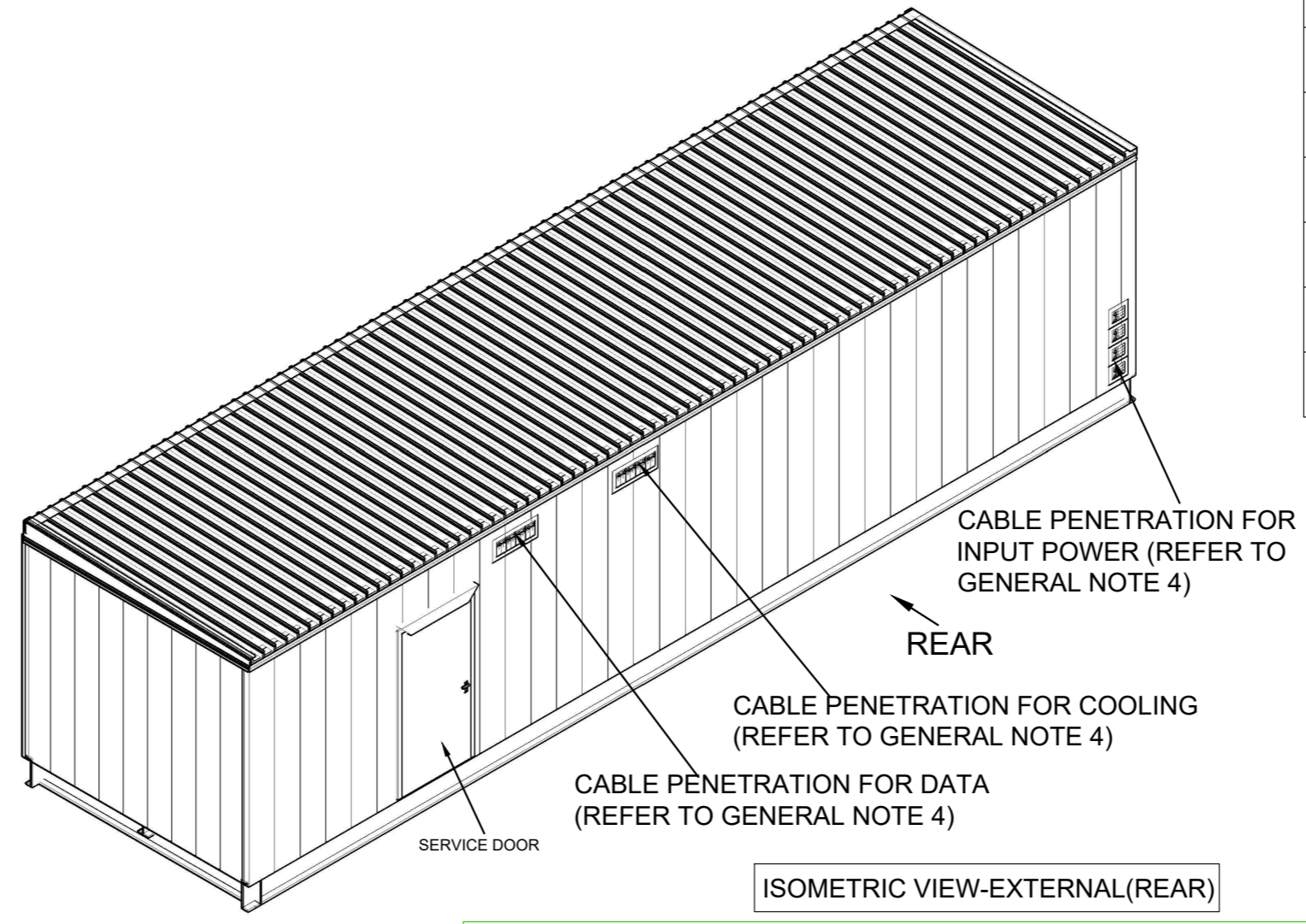
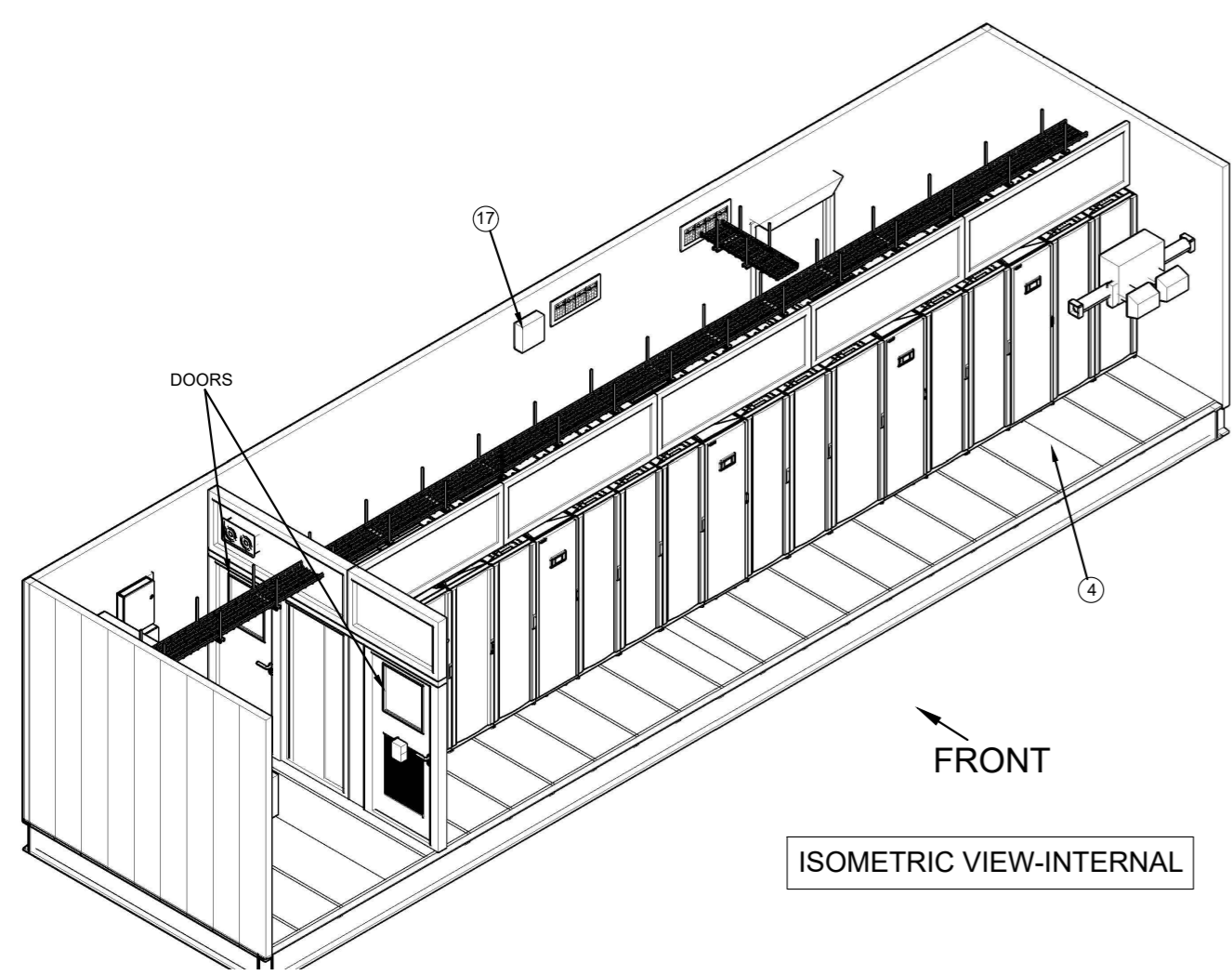
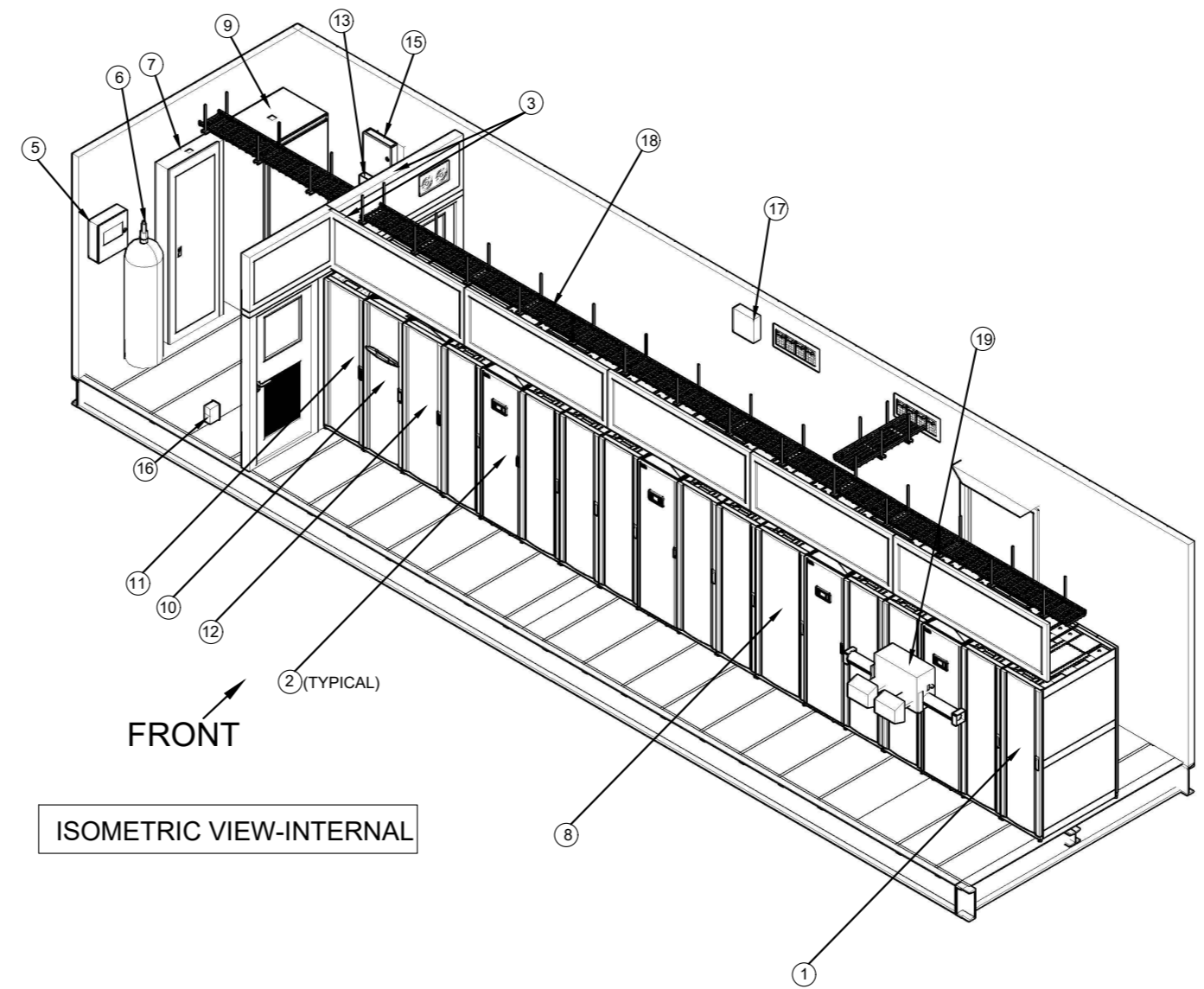
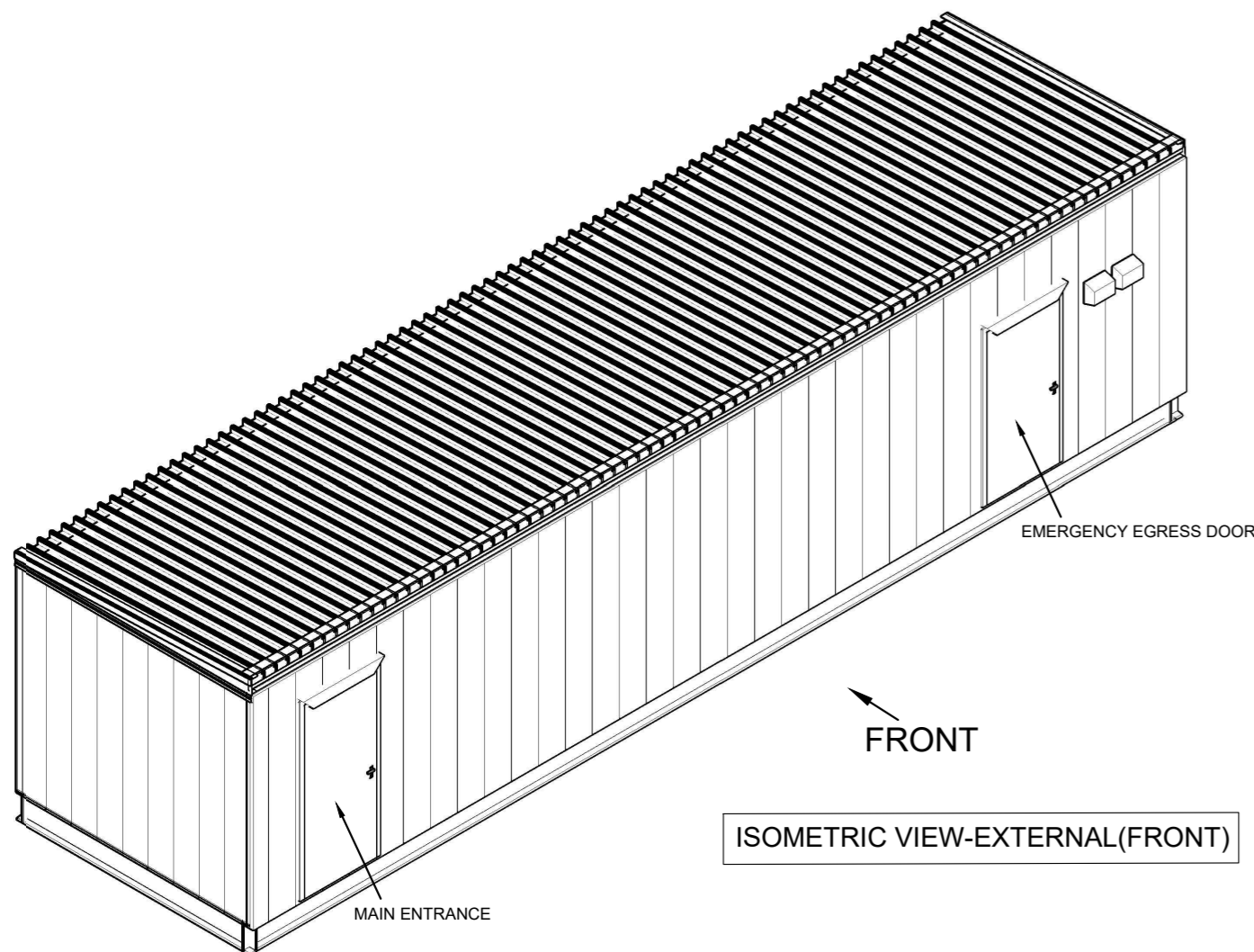


NOT FOR CONSTRUCTION

* - UNLESS OTHERWISE SPECIFIED QUANTITY IS ONE

SL.NO.	DESCRIPTION
1	IT Racks-(Typical, Qty=11) 42Ux600x1200
2	Inrow cooling units-ACRD600 & ACRD600P (Qty=2 Each)
3	Aisle Containment
4	Cold Aisle
5	Fire Alarm Control Panel
6	Fire Suppression Cylinder
7	208V Main Distribution Panel
8	Networking IT Rack-(Qty=1) 42Ux750x1200
9	ASCO-300 Automatic Transfer Switch(Service Entrance)
10	Symmetra PX100 UPS(90KW, N+1)
11	XR Battery Cabinet for Symmetra PX100 UPS
12	Power Distribution Cabinet for Symmetra PX100 UPS
13	Generator Annunciator Panel(Optional)
14	Control Panel(See sectional views)
15	Access Control Panel(Optional)
16	120V Receptacle(Typical)
17	DX-Control Panel
18	Cable Tray(Typical)
19	Energy Recovery Ventilator with Damper System



GENERAL NOTES:

1. INSTALLATION SHALL COMPLY WITH ALL APPLICABLE NATIONAL, STATE AND LOCAL CODES.
2. PLEASE REFER TO PRODUCT DOCUMENTATION FOR FURTHER INFORMATION.
3. UNLESS OTHERWISE SPECIFIED, ALL DIMENSIONS ARE IN INCHES[MILLIMETERS].
4. REFER TO ELECTRICAL DRAWINGS FOR CONDUIT SIZES AND EXACT LOCATION OF CABLE PENETRATIONS FOR INPUT POWER, DATA AND FOR COOLING SYSTEM.
5. REFER TO ELECTRICAL DRAWINGS FOR SPECIFIC DETAILS ON THE ELECTRICAL SYSTEM.

FILENAME/PATH:

0	THIS DRAWING IS BASED ON DRAWING NUMBER PLACEHOLDER - INITIAL RELEASE	DD-MMM-YY					
REV	DESCRIPTION	DRWN	DATE	ENGR	DATE	APPR	DATE

REVISIONS

THIS DRAWING AND SPECIFICATIONS HEREIN ARE THE PROPERTY OF SCHNEIDER ELECTRIC AND SHALL NOT BE COPIED, REPRODUCED OR USED IN WHOLE OR IN PART, AS THE BASIS FOR THE MANUFACTURE OR SALE OF ITEMS WITHOUT WRITTEN PERMISSION FROM SCHNEIDER ELECTRIC. THIS DRAWING IS BASED UPON LATEST AVAILABLE INFORMATION AND IS SUBJECT TO CHANGE WITHOUT NOTICE.

Schneider Electric

TITLE: PREFAB CONFIGURATION-4 90KW(N+1), INROW COOLING, 11-RACKS
 INPUT - 208V,3PH,4W
 OUTPUT - 208V,3PH,4W
 GENERAL ARRANGEMENT

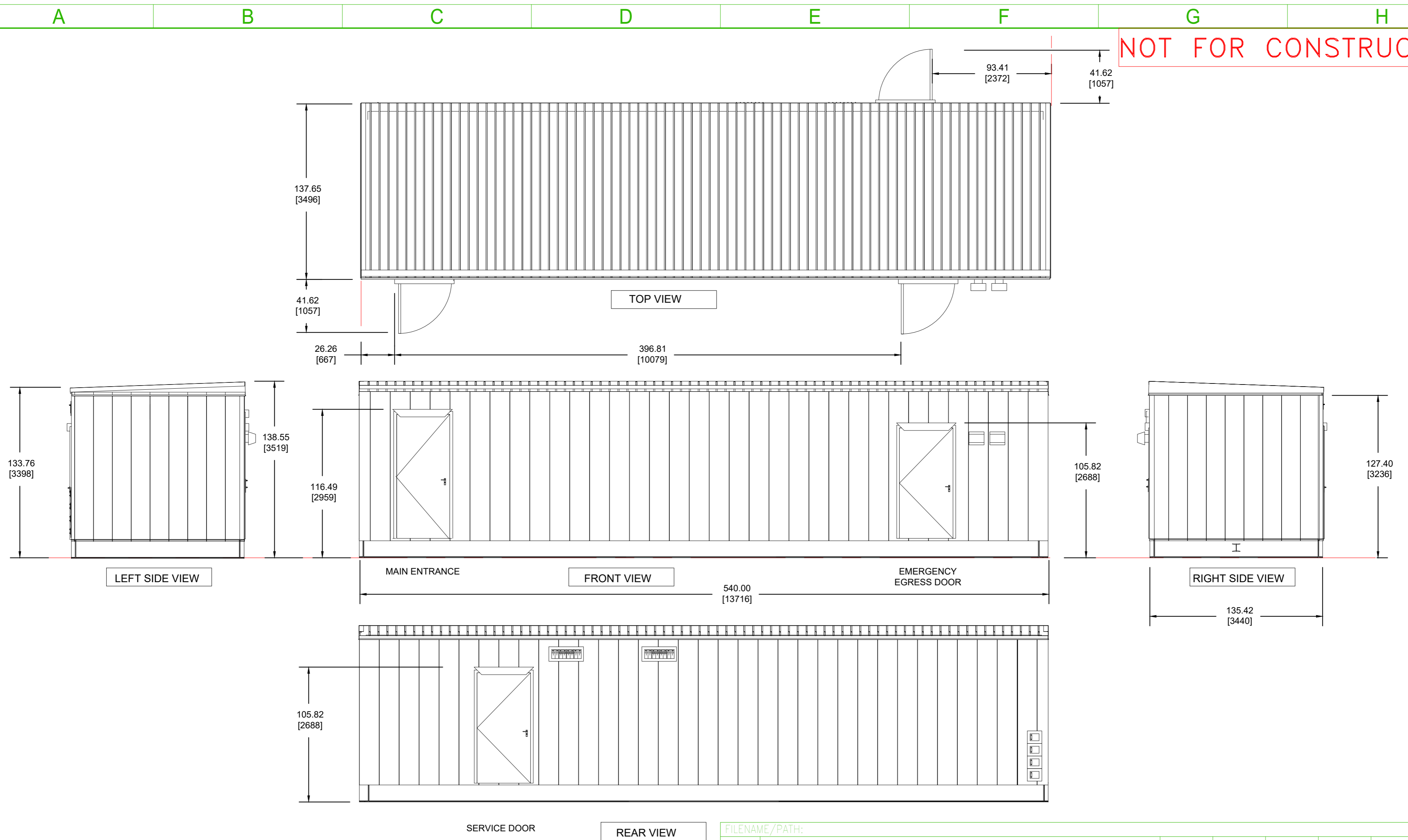
DWG NO: PFMIEC090D1N11C
 DRAWN: K.NAGENDRA
 ENGINEER: X XXX
 APPROVED: X XXX

PROJECT: PREFAB SHEET 1 OF 3

DATE: 27-AUG-19
 DD-MMM-YY
 DD-MMM-YY

REV: A/0
 THIRD ANGLE PROJECTION

NOT FOR CONSTRUCTION

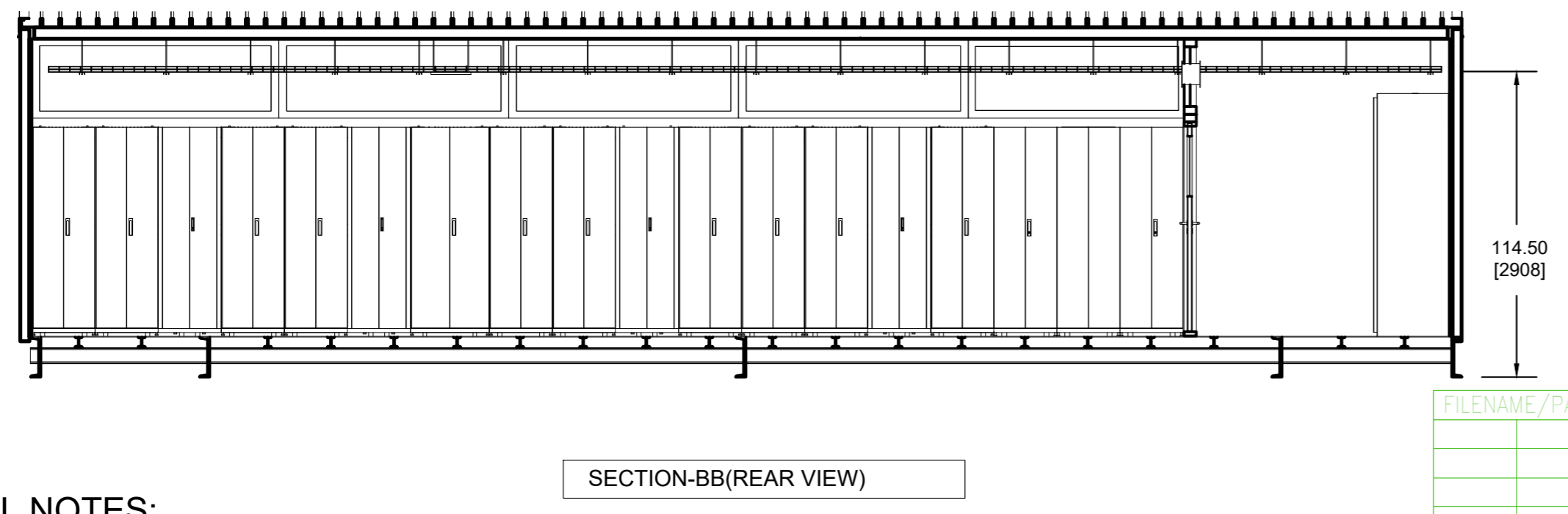
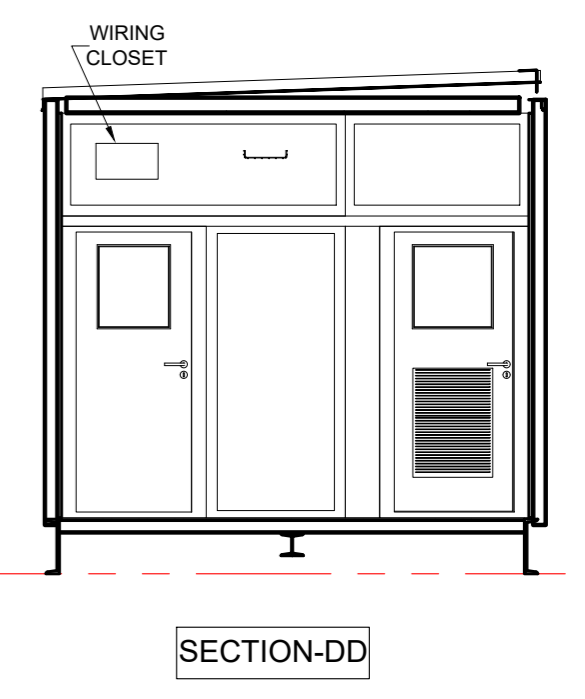
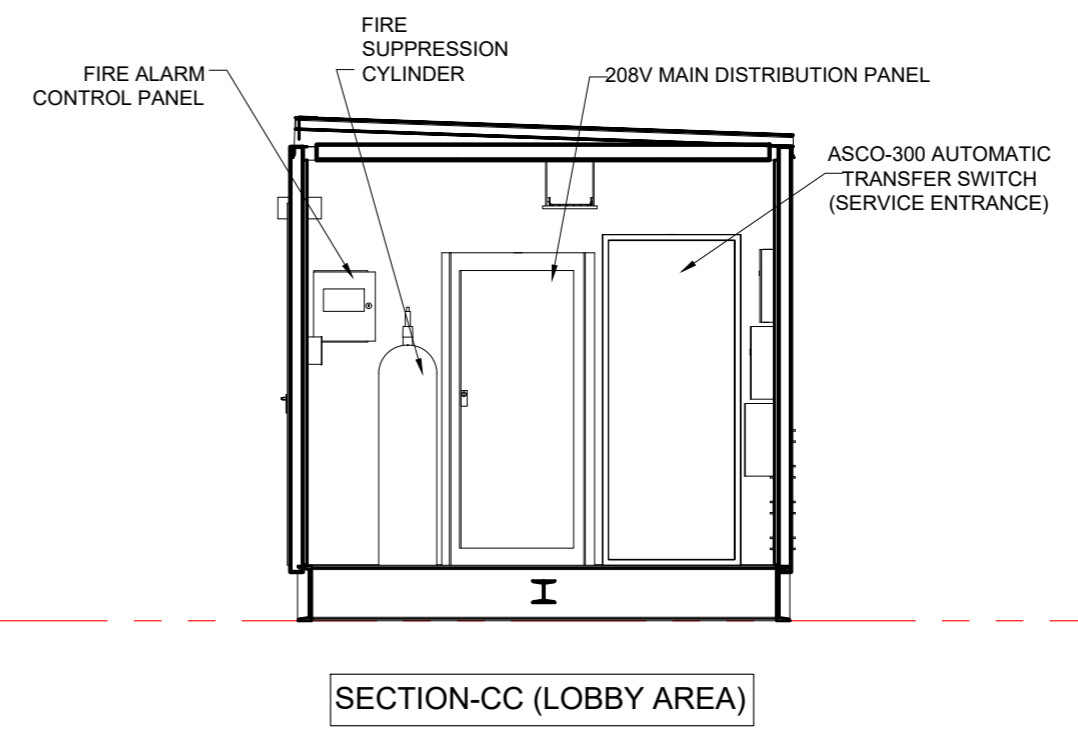
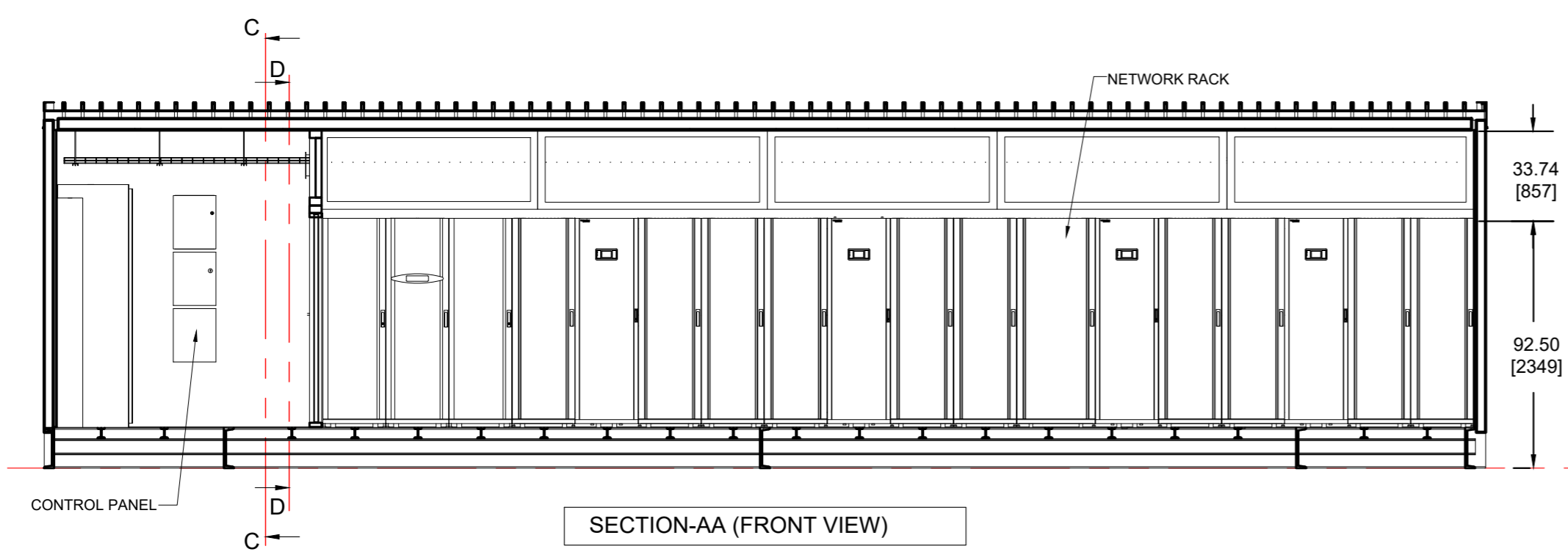
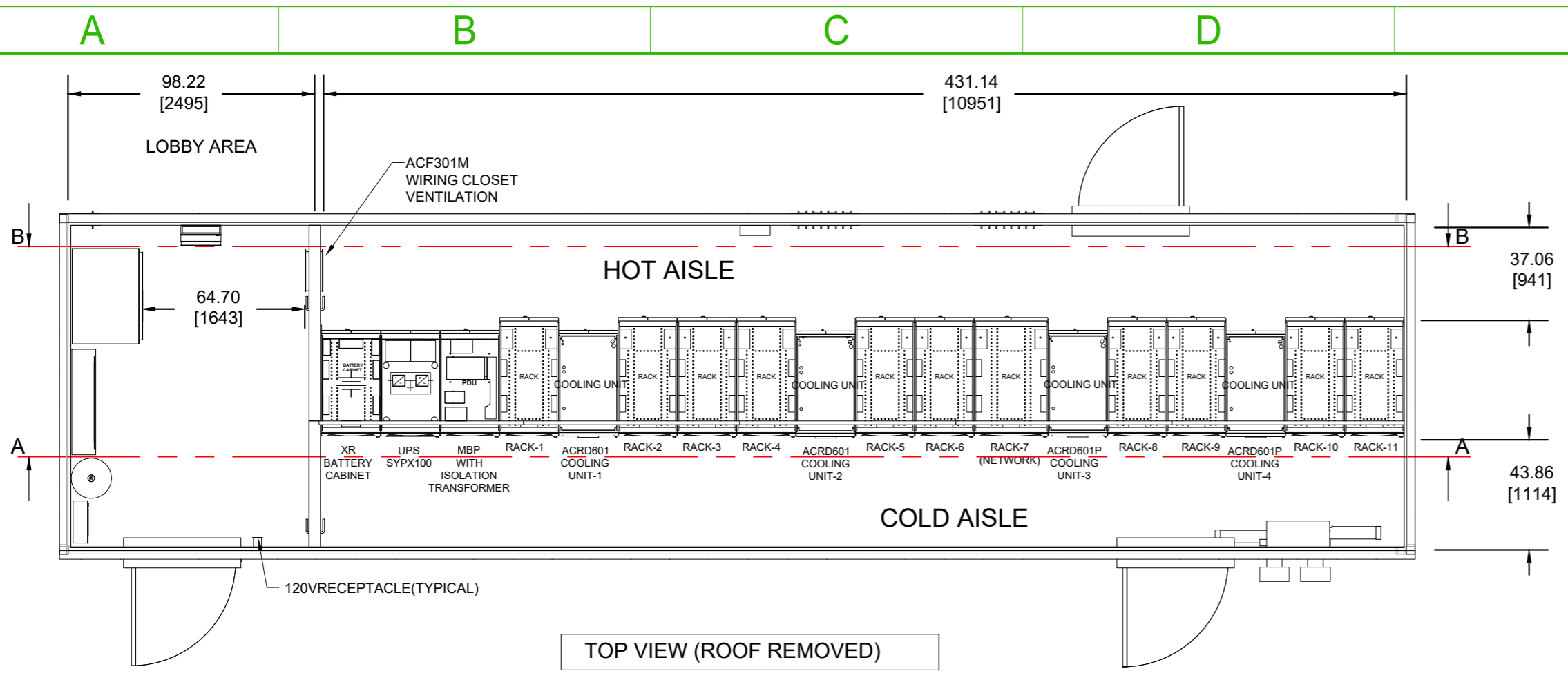


GENERAL NOTES:

1. INSTALLATION SHALL COMPLY WITH ALL APPLICABLE NATIONAL, STATE AND LOCAL CODES.
2. PLEASE REFER TO PRODUCT DOCUMENTATION FOR FURTHER INFORMATION.
3. UNLESS OTHERWISE SPECIFIED, ALL DIMENSIONS ARE IN INCHES[MILLIMETERS].
4. REFER TO ELECTRICAL DRAWINGS FOR CONDUIT SIZES AND EXACT LOCATION OF CABLE PENETRATIONS FOR INPUT POWER, DATA AND FOR COOLING SYSTEM.
5. REFER TO ELECTRICAL DRAWINGS FOR SPECIFIC DETAILS ON THE ELECTRICAL SYSTEM.

FILENAME/PATH:										
0	THIS DRAWING IS BASED ON DRAWING NUMBER PLACEHOLDER - INITIAL RELEASE							DD-MMM-YY		
REV	DESCRIPTION	DRWN	DATE	ENGR	DATE	APPR	DATE			
REVISIONS										
THIS DRAWING AND SPECIFICATIONS HEREIN ARE THE PROPERTY OF SCHNEIDER ELECTRIC AND SHALL NOT BE COPIED, REPRODUCED OR USED IN WHOLE OR IN PART, AS THE BASIS FOR THE MANUFACTURE OR SALE OF ITEMS WITHOUT WRITTEN PERMISSION FROM SCHNEIDER ELECTRIC. THIS DRAWING IS BASED UPON LATEST AVAILABLE INFORMATION AND IS SUBJECT TO CHANGE WITHOUT NOTICE.				Schneider Electric		TITLE: PREFAB CONFIGURATION-4 90KW(N+1), INROW COOLING, 11-RACKS INPUT - 208V,3PH,4W OUTPUT - 208V,3PH,4W GENERAL ARRANGEMENT		DWG NO: PFMIEC090D1N11C		
PROJECT: PREFAB SHEET 2 OF 3						DRAWN: K.NAGENDRA 27-AUG-19		REV: A/0		
						ENGINEER: X XXX DD-MMM-YY		THIRD ANGLE PROJECTION		
						APPROVED: X XXX DD-MMM-YY				

NOT FOR CONSTRUCTION



- GENERAL NOTES:**
1. INSTALLATION SHALL COMPLY WITH ALL APPLICABLE NATIONAL, STATE AND LOCAL CODES.
 2. PLEASE REFER TO PRODUCT DOCUMENTATION FOR FURTHER INFORMATION.
 3. UNLESS OTHERWISE SPECIFIED, ALL DIMENSIONS ARE IN INCHES[MILLIMETERS].
 4. REFER TO ELECTRICAL DRAWINGS FOR CONDUIT SIZES AND EXACT LOCATION OF CABLE PENETRATIONS FOR INPUT POWER, DATA AND FOR COOLING SYSTEM.
 5. REFER TO ELECTRICAL DRAWINGS FOR SPECIFIC DETAILS ON THE ELECTRICAL SYSTEM.

FILENAME/PATH:						
0	THIS DRAWING IS BASED ON DRAWING NUMBER PLACEHOLDER - INITIAL RELEASE				DD-MMM-YY	
REV	DESCRIPTION	DRWN	DATE	ENGR	DATE	APPR
<p>THIS DRAWING AND SPECIFICATIONS HEREIN ARE THE PROPERTY OF SCHNEIDER ELECTRIC AND SHALL NOT BE COPIED, REPRODUCED OR USED IN WHOLE OR IN PART, AS THE BASIS FOR THE MANUFACTURE OR SALE OF ITEMS WITHOUT WRITTEN PERMISSION FROM SCHNEIDER ELECTRIC. THIS DRAWING IS BASED UPON LATEST AVAILABLE INFORMATION AND IS SUBJECT TO CHANGE WITHOUT NOTICE.</p>						
		<p>TITLE: PREFAB CONFIGURATION-4 90KW(N+1), INROW COOLING, 11-RACKS INPUT - 208V,3PH,4W OUTPUT - 208V,3PH,4W GENERAL ARRANGEMENT</p>		<p>DWG NO: PFMIEC090D1N11C DRAWN: K.NAGENDRA 27-AUG-19 ENGINEER: X XXX DD-MMM-YY APPROVED: X XXX DD-MMM-YY</p>		<p>REV: A/0 THIRD ANGLE PROJECTION</p>
PROJECT: PREFAB		SHEET 3 OF 3				