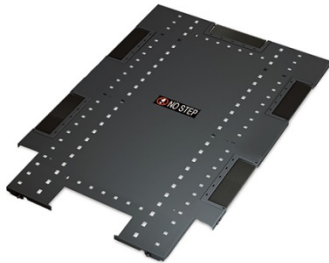


# NetShelter SX

**APC by Schneider Electric NetShelter SX  
Premium Datacenter Cabinets now Made in  
the USA to guidelines for TAA (Trade  
Agreements Act) compliance!**



## CABLE ACCESS ROOF

- > Five access holes with brush strips for cable passthrough and for maintaining air containment, three access holes for power distribution
- > Two spring loaded pins allow for easy roof removal and installation with cables in place



## EASILY ADJUSTABLE VERTICAL MOUNTING RAILS

- > To align, match the shapes along the side brace to the visible shapes shown through the opposite rail
- > Simple screw and cam engagement with captive screws
- > Easily align rails and adjust in 1/4 inch increments
- > Numbered U positions



## REMOVABLE SIDE PANELS AND FRONT/REAR DOORS

- > Half height side panels for easy and safe handling
- > Quick release latch on side panels
- > Lockable – same key for doors/side panels
- > Enclosure width the same with or without sides installed
- > Perforated front and rear doors
- > Split rear doors for better clearance in aisle



## VERTICAL 0U ACCESSORY CHANNEL

- > Toollessly mount cable management accessories or directly fasten cable bundles
- > Toollessly mount power distribution



## CASTORS AND ADJUSTABLE LEVELLING FEET

- > Both are pre-installed and standard on all enclosures
- > Levelling feet easily adjustable from the top down



- > Static Load Capacity 3,000 lb
- > Doors, sides, roof, and rails are bonded to frame



### Enclosures

### Part

### Leadtime

42U 24in Wide x 42in Deep Enclosure with Sides Black TAA Compliant

AR3100TAA

In Stock

45U 24in Wide x 42in Deep Enclosure with Sides Black TAA Compliant

AR3105TAA

Contact Sales

48U 24in Wide x 42in Deep Enclosure with Sides Black TAA Compliant

AR3107TAA

Contact Sales

**Schneider**  
Electric