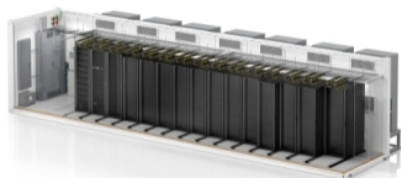


Overview

Lead time	Special Order - Call for Quoted Lead Times
-----------	--



General

Provided equipment	EcoStruxure IT ready (UPS)
--------------------	----------------------------

Physical

Color	White
Maximum Depth	480.00 in (1219.2 cm)
Maximum Height	114.02 in (289.6 cm)
Net Weight	32959.14 lb(US) (14950 kg)
Number of racks	12
Rack Free Space	504
Number of rack unit	42U
Maximum Width	95.98 in (243.8 cm)

Input

Input Frequency	60 Hz
Nominal Input Voltage	3 phase

Output

Kw Rating	75000 W
Output Frequency (sync to mains)	60 Hz sync to mains
KW per Rack	6.25 W
Output voltage	208 V 3 phase
PDU Type	Metered
Configured Power	75000 W

Conformance

Product certifications	CUL Listed UL Listed
------------------------	-------------------------

Environmental

Ambient air temperature for operation	-13...104 °F (-25...40 °C)
Operating altitude	0...1500 ft

The information provided in this documentation contains general descriptions and/or technical characteristics of the performance of the products contained herein. This documentation is not intended as a substitute for and is not to be used for determining suitability or reliability of these products for specific user applications. It is the duty of any such user or integrator to perform the appropriate and complete risk analysis, evaluation and testing of the products with respect to the relevant specific application or use thereof. Neither Schneider Electric Industries SAS nor any of its affiliates or subsidiaries shall be responsible or liable for misuse of the information contained herein.

Batteries & Runtime

Battery Slots Empty	0
Included Battery Modules	0
Battery type	VRLA
Liquid Electrolyte Value	0
Battery Volt-Amp-Hour Capacity	0 VAh

Communications & Management

Emergency Power Off (EPO)	Optional
---------------------------	----------

Contractual warranty

Warranty	1 year (parts only)
----------	---------------------