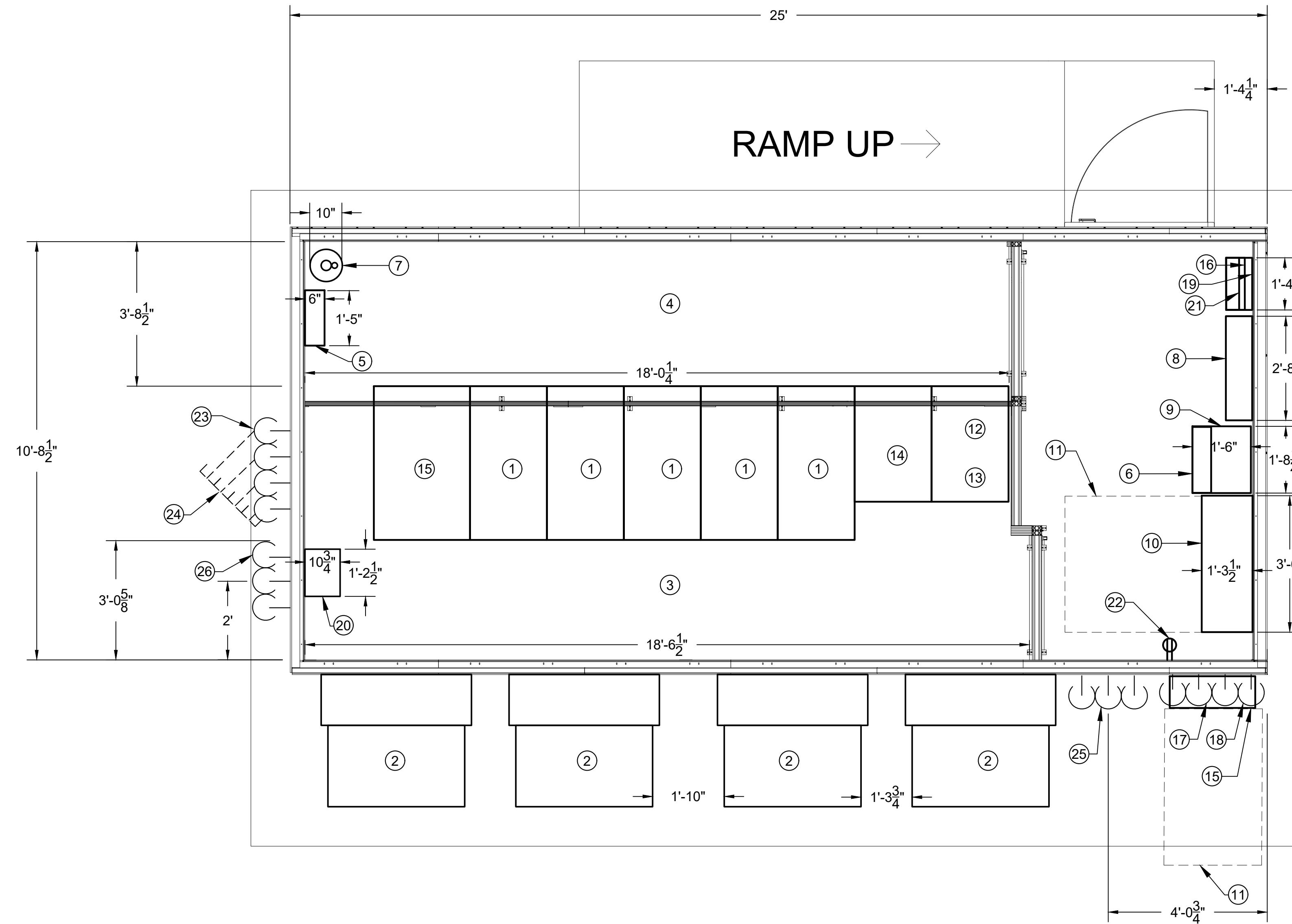


PREFAB CONFIGURATION-2

PREFAB FRAME SIZE (KW)	MAX IT LOAD (KW)	PREFAB MODULE DIMENSIONS (APPROXIMATE)			MDP-100 SYSTEM VOLTAGE LEVEL (V)	UPS SYSTEM MODEL	ATS MODEL	ATS (A)	WALL MOUNT COOLING UNIT WITH HEATER (MODEL)	NO. OF WALL MOUNT COOLING UNITS WITH HEATER	IT RACK (MODEL)/ NETWORKING IT RACK(MODEL)	NO. OF IT RACKS	IT RACK DENSITY (KW/RACK)	NUMBER OF SINGLE PHASE POLES IN MBP	IT RACK DIMENSIONS (APPROXIMATE)			RACK PDU (MODEL)
		DEPTH (FT)	WIDTH (FT)	HEIGHT (FT)											DEPTH (FT)	WIDTH (FT)	HEIGHT (FT)	
40	35	25	11.5	11.5	480	SYMMETRA PX40	ASCO-300	250	WMF0661	4	AR3300/ AR3350	6	5.83	42	4	2	6.5	AP8865



GENERAL NOTES:

- REFER TO THE ONE LINE DIAGRAM ON SHEET E400 FOR ADDITIONAL DETAILS ON THE ELECTRICAL SYSTEM.
- FOR ELECTRICAL SCHEDULES, SEE DRAWINGS ON SHEETS E600 AND E601.

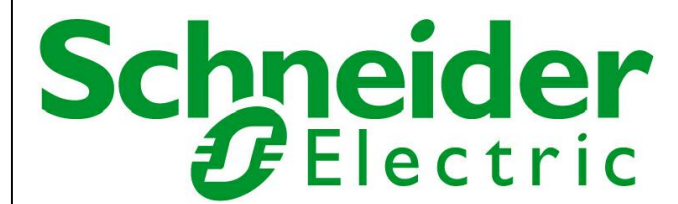
PLAN NOTES:

- | | | | | | |
|--|--|--|---|---|---|
| ① IT RACK. | ⑦ FIRE SUPPRESSION CYLINDER. | ⑫ PX40 UPS MODULE. | ⑮ PROVIDE ONE(1) 2-1/2" AND TWO(2) 3/4" CONCRETE ENCASED UNDERGROUND PVC SCH-80 CONDUITS FOR POWER AND CONTROLS FROM GENERATOR. | ⑳ PROVIDE FOUR(4) 3" CONDUITS FOR DATA/FIBER OPTICS. CONDUITS SHALL BE CONNECTED PERPENDICULARLY TO MODULE WALL AT 114" ABOVE FINISHED SLAB AT LOCATION SHOWN. TURN VERTICALLY WITH A 36" RADIUS DOWN TO SLAB FOR UNDERGROUND RUN. PROVIDE UNDERGROUND PORTION TO JUST OUTSIDE OF SLAB EDGE AS SHOWN. PROVIDE STRUCTURAL SUPPORT FOR ABOVEGROUND PORTION. CO-ORDINATE HEIGHT OF CONDUITS ABOVE FINISHED SLAB AS REQUIRED. | ㉔ CONDUITS FOR POWER CONNECTIONS TO WALL MOUNT COOLING UNITS. CONDUITS SHALL BE CONNECTED PERPENDICULARLY TO MODULE WALL AT 114" ABOVE FINISHED SLAB AT LOCATION SHOWN. CO-ORDINATE HEIGHT OF CONDUITS ABOVE FINISHED SLAB AS REQUIRED. |
| ② WMF0661 WALL MOUNT COOLING UNIT WITH HEATER. | ⑧ 480V MAIN(I-LINE/NF) DISTRIBUTION PANEL(MDP-100). | ⑬ PX40 UPS BATTERY CABINET. | ⑰ CP-100 CONTROL PANEL. | ㉕ PIPES FOR HUMIDIFICATION AND DEHUMIDIFICATION. PIPES SHALL BE CONNECTED PERPENDICULARLY TO MODULE WALL AT 7-1/2" ABOVE FINISHED SLAB AT LOCATION SHOWN. | |
| ③ HOT AISLE. | ⑨ 480-208/120V STEP DOWN TRANSFORMER(TRF-2). | ⑭ PX40 UPS POWER DISTRIBUTION CABINET. | ⑱ HUMIDIFIER(OPTIONAL). | | |
| ④ COLD AISLE. | ⑩ ASCO-300 MODEL(480V) SERVICE ENTRANCE RATED AUTOMATIC TRANSFER SWITCH WITH PROGRAMMABLE DELAYED TRANSITION(ATS-MDP-100). | ⑮ NETWORKING IT RACK. | ㉒ ACCESS CONTROL PANEL(OPTIONAL). | | |
| ⑤ FIRE ALARM CONTROL PANEL. THE FIRE ALARM SYSTEM INSTALLATION SHALL BE AS PER NFPA 72 REQUIREMENTS. | ⑪ REQUIRED CLEARANCE (TYPICAL). | ⑯ GENERATOR ANNUNCIATOR PANEL(OPTIONAL). | ㉓ 120V RECEPTACLE(TYPICAL). | | |
| ⑥ 208/120V DISTRIBUTION PANEL (PDB-200). | | ⑰ PROVIDE ONE(1) 2-1/2" CONCRETE ENCASED UNDERGROUND PVC SCH-80 CONDUITS FOR POWER FROM UTILITY. | ㉔ RUN UNDERGROUND PORTION DIAGONALLY AT 45 DEGREES TO THE LEFT, AS SHOWN, TO EXTEND 48" BEYOND THE EDGE OF THE PAD TO BE CONTINUED BY OTHERS. CAP CONDUIT ENDS AT THIS POINT. | | |

ELECTRICAL PREFAB MODULE DETAILS CONFIGURATION-2

SCALE: 1/2" = 1'-0"

CONSULTANTS:



IT MISSION CRITICAL SERVICES, INC.
12150 MONUMENT DRIVE SUITE 150 FAIRFAX, VA. 22033
PH: 703-968-0300 FX: 703-654-3680

Schneider Electric IT
Mission Critical Services, Inc.
Proprietary use pursuant to company policy

IT IS A VIOLATION FOR ANY PERSON TO ALTER THIS DOCUMENT THAT BEARS THE SEAL OF A PROFESSIONAL ENGINEER, UNLESS THE PERSON IS ACTING UNDER THE DIRECTION OF A LICENSED PROFESSIONAL ENGINEER IN THE STATE OF WORK. THE ALTERING ENGINEER SHALL AFFIX THEIR SEAL AND THE NOTATION "ALTERED BY" FOLLOWED BY THEIR SIGNATURE AND THE DATE OF SUCH ALTERATION, AND A SPECIFIC DESCRIPTION OF THE ALTERATION TO THE DOCUMENT.

SEAL:

NOT FOR CONSTRUCTION

PROJECT INFORMATION:

35KW DATA CENTER
REFERENCE DESIGN
PREFAB CONFIGURATION-2

KEYPLAN:

REV.	DATE	DESCRIPTION
0	05/2/2019	CONCEPTUAL DRAWINGS

DRAWN BY: GR

CHECKED BY: MN

PROJECT NUMBER: DMP-XXXXXX

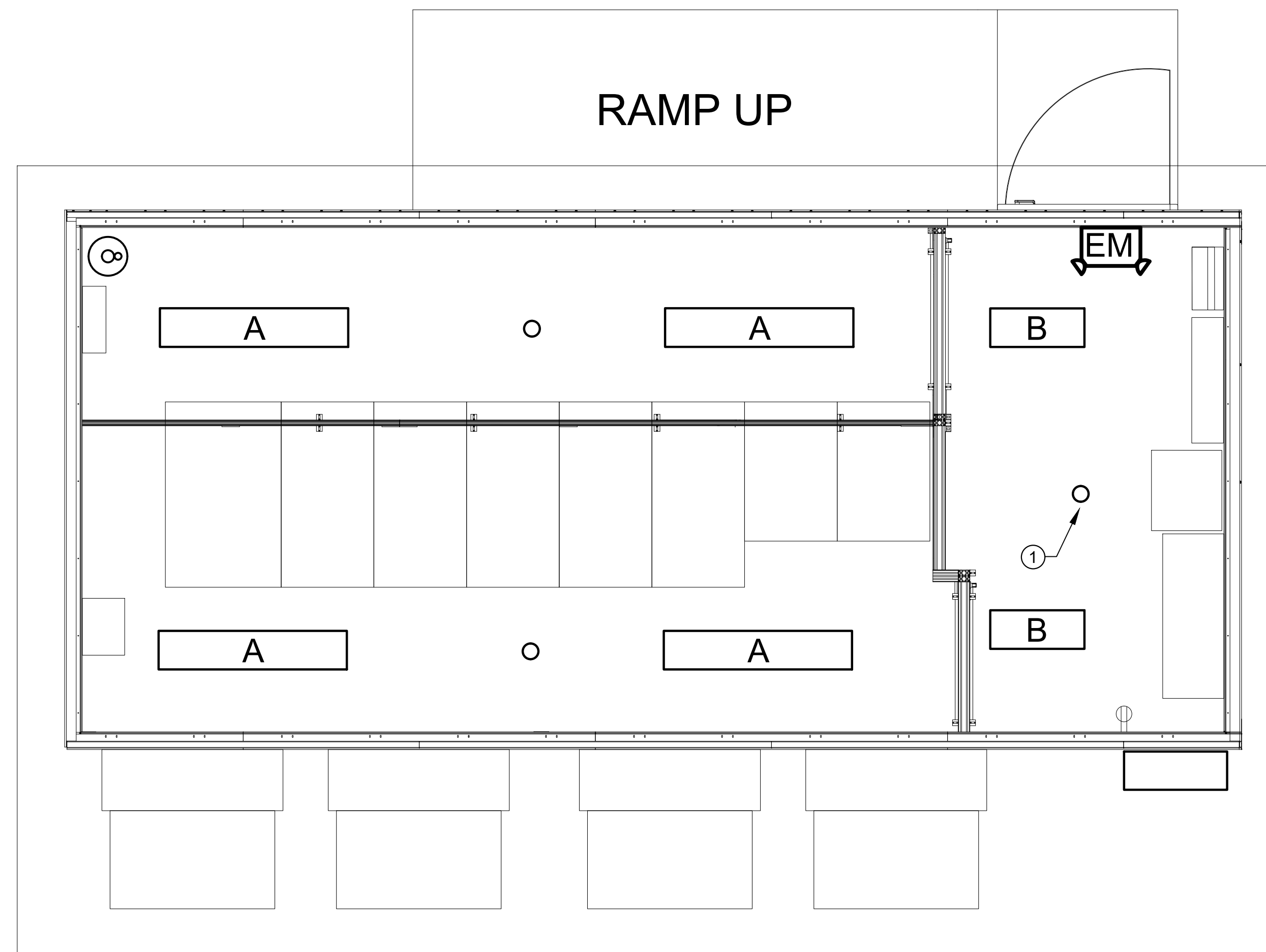
DRAWING SCALE: NONE

SHEET TITLE:
**ELECTRICAL
PREFAB MODULE DETAILS
CONFIGURATION-2**

DATE:
05/2/2019

DRAWING NUMBER:

E102



LIGHTING FIXTURE SCHEDULE								
TYPE		MANUFACTURER PRODUCT #	VOLTAGE	WATTAGE	LAMP	NUMBER OF FIXTURES	MOUNTING	REMARKS
A	LED 4FT VAPORTIGHT	LITHONIA LIGHTING	120V	38W	LED	4	SURFACE	4' LED VAPOR TIGHT FIXTURE DIMMABLE
		4VT2-LD4-4-DR-UNVL840-CD1-WL-U						
B	LED 2FT VAPORTIGHT	LITHONIA LIGHTING	120V	28.4W	LED	2	SURFACE	2' LED VAPOR TIGHT FIXTURE DIMMABLE
		2VT2-LD4-3-DR-UNVL840-CD1-WL-U						
EM	LED COMBO EXIT/EMERGENCY LIGHTS	LITHONIA LIGHTING	120V	4.3W	LED	1	SURFACE	THERMOPLASTIC WHITE (2) HEAD, BATTERY BACKED EMERGENCY LIGHT
		LHQM LED R HO M6						

GENERAL NOTES:

- REFER TO ONE LINE DIAGRAM ON SHEET E400 FOR ADDITIONAL DETAILS ON THE ELECTRICAL SYSTEM.
- FOR ELECTRICAL SCHEDULES, SEE DRAWINGS ON SHEETS E600 AND E601.

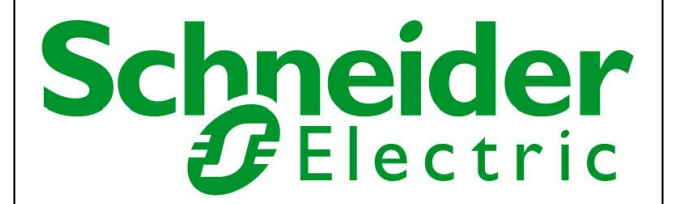
PLAN NOTES:

- OCCUPANCY SENSOR(TYP.) MODEL DT-305 OR CX-100-3 OR SIMILAR.

**ELECTRICAL LIGHTING PLAN
CONFIGURATION-2**

SCALE: 1/2" = 1'-0"

CONSULTANTS:



IT MISSION CRITICAL SERVICES, INC.
12150 MONUMENT DRIVE SUITE 150 FARRAS, VA 22033
PH: 703-968-0300 FX: 703-654-3680

Schneider Electric IT
Mission Critical Services, Inc.
Proprietary use pursuant to company policy

IT IS A VIOLATION FOR ANY PERSON TO ALTER THIS DOCUMENT THAT BEARS THE SEAL OF A PROFESSIONAL ENGINEER, UNLESS THE PERSON IS ACTING UNDER THE DIRECTION OF A LICENSED PROFESSIONAL ENGINEER IN THE STATE OF WORK. THE ALTERING ENGINEER SHALL AFFIX THEIR SEAL AND THE NOTATION "ALTERED BY" FOLLOWED BY THEIR SIGNATURE AND THE DATE OF SUCH ALTERATION, AND A SPECIFIC DESCRIPTION OF THE ALTERATION TO THE DOCUMENT.

SEAL:

**NOT FOR
CONSTRUCTION**

PROJECT INFORMATION:

35KW DATA CENTER
REFERENCE DESIGN
PREFAB CONFIGURATION-2

KEYPLAN:

REV.	DATE	DESCRIPTION
0	05/2/2019	CONCEPTUAL DRAWINGS

DRAWN BY: GR

CHECKED BY: MN

PROJECT NUMBER: DMP-XXXXXX

DRAWING SCALE: NONE

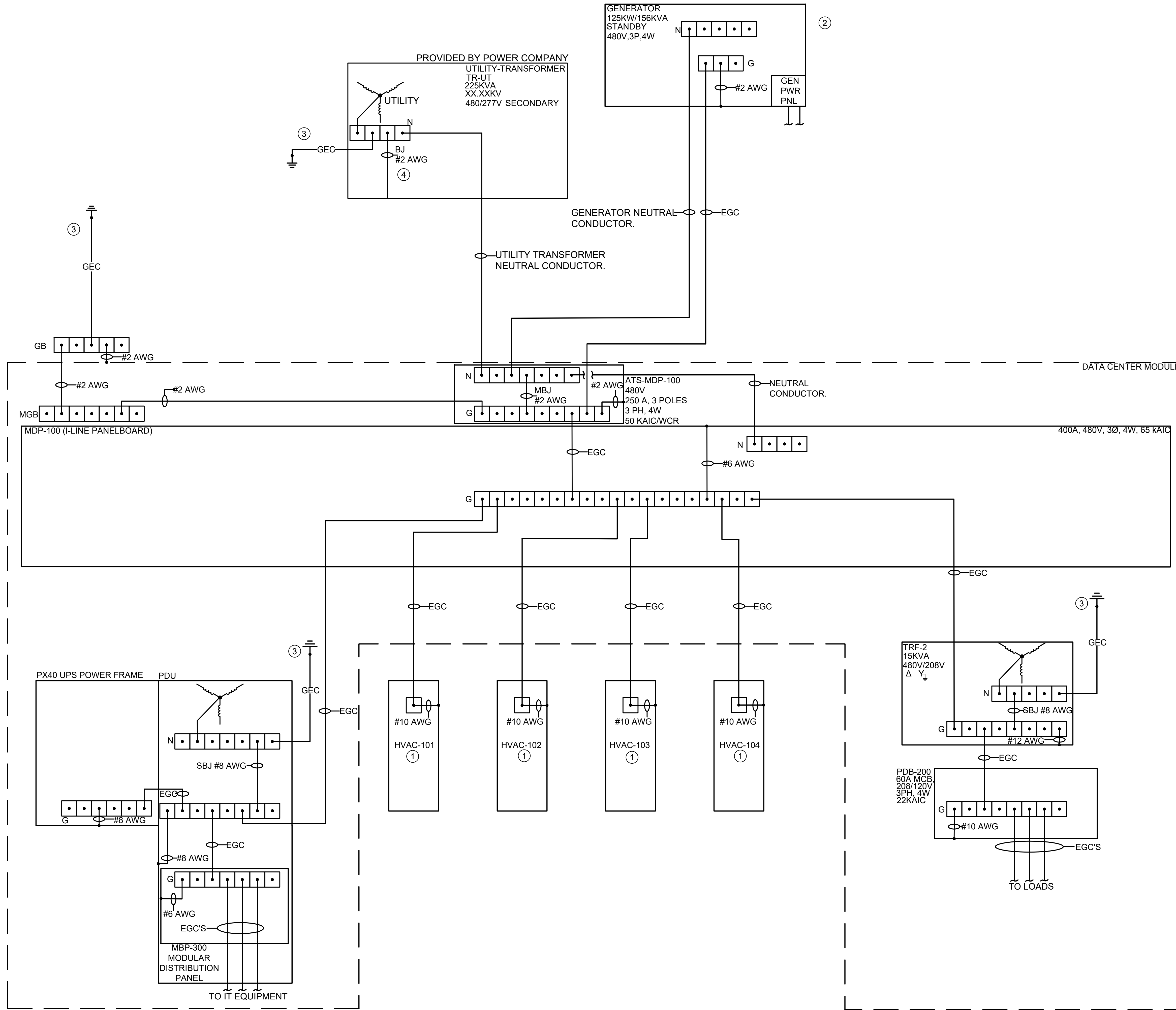
SHEET TITLE:
**ELECTRICAL
LIGHTING PLAN
CONFIGURATION-2**

DATE:
05/2/2019

DRAWING NUMBER:

E104

ELECTRICAL GROUNDING DIAGRAM:



GENERAL NOTES:

- SEE DRAWING E001 FOR ABBREVIATIONS AND SYMBOLS.
- SEE DRAWING E002 AND E003 FOR ELECTRICAL SPECIFICATIONS.
- SEE DRAWING E400 FOR ELECTRICAL ONE LINE DIAGRAM.
- SEE DRAWING E500 FOR ELECTRICAL DETAILS.
- SEE DRAWING E600 AND E601 FOR ELECTRICAL SCHEDULES.
- ALL GROUNDING CONNECTIONS AND BONDINGS SHALL BE BY ARTICLE 250 OF NFPA 70. EQUIPMENT GROUNDING CONDUCTORS ARE NORMALLY RUN WITH CIRCUIT CONDUCTORS. SEE DRAWING E400 ONE LINE DIAGRAM AND E600 ELECTRICAL SCHEDULES FOR EGC SIZING DETAILS.
- REFER TO ELECTRICAL GROUNDING AND LIGHTNING PROTECTION DRAWING ON SHEET E103 FOR ADDITIONAL DETAILS.

PLAN NOTES:

- ① WALL MOUNT COOLING UNIT WITH HEATER(TYP.).
- ② GENERATOR GROUNDING SYSTEM IS BASED ON A NON-SEPERATELY DERIVED SYSTEM.
- ③ SEE DRAWING E103 GROUNDING AND LIGHTNING PROTECTION FOR DETAILS.
- ④ BONDING JUMPER(PROVIDED BY OTHERS) TO BE INSTALLED AS REQUIRED. ALL GROUNDING CONNECTIONS AND BONDINGS SHALL BE AS PER ARTICLE 250 AND 450 OF NFPA 70 AND SHALL MEET ALL STATE AND LOCAL CODE REQUIREMENTS.

LEGEND:

- EGC — EQUIPMENT GROUNDING CONDUCTOR NORMALLY RUN IN RACEWAYS WITH CIRCUIT CONDUCTORS. SIZE PER NEC.
- GEC — GROUNDING ELECTRODE CONDUCTOR.
- BJ — BONDING JUMPER. SIZE PER NEC.
- MBJ — MAIN BONDING JUMPER.
- SBJ — SYSTEM BONDING JUMPER.
- MGB MAIN GROUNDING BAR.
- N NEUTRAL BAR.
- G GROUND BAR.



IT MISSION CRITICAL SERVICES, INC.
12150 MONUMENT DRIVE SUITE 150 FAIRFAX, VA 22033
PH: 703-968-0300 FX: 703-654-3680

Schneider Electric IT
Mission Critical Services, Inc.
Proprietary use pursuant to company policy

IT IS A VIOLATION FOR ANY PERSON TO ALTER THIS DOCUMENT THAT BEARS THE SEAL OF A PROFESSIONAL ENGINEER, UNLESS THE PERSON IS ACTING UNDER THE DIRECTION OF A LICENSED PROFESSIONAL ENGINEER IN THE STATE OF WORK. THE ALTERING ENGINEER SHALL AFFIX THEIR SEAL AND THE NOTATION "ALTERED BY" FOLLOWED BY THEIR SIGNATURE AND THE DATE OF SUCH ALTERATION, AND A SPECIFIC DESCRIPTION OF THE ALTERATION TO THE DOCUMENT.

SEAL:

NOT FOR CONSTRUCTION

PROJECT INFORMATION:

35KW DATA CENTER
REFERENCE DESIGN
PREFAB CONFIGURATION-2

KEYPLAN:

REV.	DATE	DESCRIPTION
0	05/2/2019	CONCEPTUAL DRAWINGS

DRAWN BY: GR

CHECKED BY: MN

PROJECT NUMBER: DMP-XXXXXX

DRAWING SCALE: NONE

SHEET TITLE:
ELECTRICAL GROUNDING DIAGRAM CONFIGURATION-2

DATE: 05/2/2019

DRAWING NUMBER:

E401

SYSTEM LOAD CALCULATION		
ITEM	LOAD	UNIT
CRITICAL LOAD	35.000	KVA
HVAC 101	24.520	KVA
HVAC 102	24.520	KVA
HVAC 103	24.520	KVA
HVAC 104(REDUNDANT)	0.000	KVA
ERV & DAMPER SYSTEM	0.600	KVA
FIRE SUPPRESSION	0.600	KVA
RECEPTACLES	1.260	KVA
HUMIDIFIER(OPTIONAL)	0.600	KVA
GENERATOR POWER PANEL	5.000	KVA
CONTROLS POWER	1.000	KVA
INTERIOR LIGHTING	0.5	KVA
LOBBY VENTILATION	0.12	KVA
EXTERIOR LIGHTING	1	KVA
TOTAL KVA	119.240	KVA

DISTRIBUTION PANELBOARD 'MBP-300' SCHEDULE																		
VOLTAGE	PH	WIRE	MCB (A)	MLO (A)	AIC	MOUNTING	LOCATION	PANEL CATALOG NUMBER										
120/ 208	3	4		225	65,000	SURFACE	MODULE											
CKT #	ITEM SERVED	CKT. TRIP	BRK P	WIRE SIZE	COND. SIZE	LOAD (KVA)	PHASE			LOAD (KVA)	COND. SIZE	WIRE SIZE	CKT. P	BRK TRIP	ITEM SERVED	CKT #		
							A	B	C									
1	RACK#1	30	3	10		5.83	3.89			5.83		10	3	30	RACK#5	2		
3								3.89									4	
5									3.89									6
7	RACK#2	30	3	10		5.83	3.89			5.83		10	3	30	RACK#6	8		
9									3.89									10
11																3.89		
13	RACK#3	30	3	10		5.83	1.94								SPACE	14		
15									1.94									16
17																1.94		
19	RACK#4	30	3	10		5.83	1.94								SPACE	20		
21									1.94									22
23																1.94		
25	SPACE						0.00								SPACE	26		
27									0.00									28
29																0.00		
31	SPACE						0.00								SPACE	32		
33									0.00									34
35																0.00		
37	CP-100	15	1	12		1.00	1.00					1	15	SPARE	38			
39							0.00					1	15	SPARE	40			
41							0.00									42		
							12.66	11.66	11.66									
NOTES: DEMAND FACTOR IN ACCORANCE WITH NEC. RACKS SHALL HAVE (N) DISTRIBUTION. OPTIONAL UPGRADE TO (2N) DISTRIBUTION SHALL AVAILABLE ON REQUEST.												35.98	TOTAL KVA					
												99.87	TOTAL AMPS					

PLAN NOTES:

- ① POWER SHALL BE DISTRIBUTED TO IT RACKS AND CONTROL PANEL LOAD THROUGH CABLE TRAYS.



IT MISSION CRITICAL SERVICES, INC.
12150 MONUMENT DRIVE SUITE 150 FAIRFAX, VA. 22033
PH: 703-968-0300 FX: 703-654-3680

Schneider Electric IT
Mission Critical Services, Inc.
Proprietary use pursuant to company policy

IT IS A VIOLATION FOR ANY PERSON TO ALTER THIS DOCUMENT THAT BEARS THE SEAL OF A PROFESSIONAL ENGINEER, UNLESS THE PERSON IS ACTING UNDER THE DIRECTION OF A LICENSED PROFESSIONAL ENGINEER IN THE STATE OF WORK. THE ALTERING ENGINEER SHALL AFFIX THEIR SEAL AND THE NOTATION "ALTERED BY" FOLLOWED BY THEIR SIGNATURE AND THE DATE OF SUCH ALTERATION, AND A SPECIFIC DESCRIPTION OF THE ALTERATION TO THE DOCUMENT.

SEAL:

NOT FOR CONSTRUCTION

PROJECT INFORMATION:

35KW DATA CENTER
REFERENCE DESIGN
PREFAB CONFIGURATION-2

KEYPLAN:

REV.	DATE	DESCRIPTION
0	05/2/2019	CONCEPTUAL DRAWINGS

DRAWN BY: GR

CHECKED BY: MN

PROJECT NUMBER: DMP-XXXXXX

DRAWING SCALE: NONE

SHEET TITLE:
ELECTRICAL SCHEDULES CONFIGURATION-2

DATE: 05/2/2019

DRAWING NUMBER:

E601