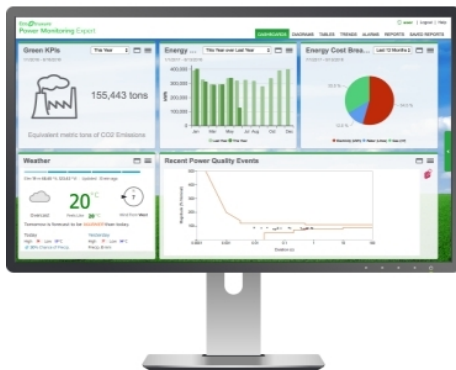


## Product data sheet

### Characteristics

# PSWCZNCZZSPEZZ

Unlimited Engineering and Web Clients for  
Power Monitoring Expert software



### Main

Range	EcoStruxure Building Operation
Product brand	Schneider Electric
Product or component type	Software
Software type	Subscription software
Software designation	Power Monitoring Expert
Operating system	Windows Server 2012 Windows 10 Windows 8.1 Windows Server 2008 R2 Windows Server 2012 R2 Windows 7 Windows 8 Windows Server 2016
Type of license	Client single license
Software version	V8.1

### Complementary

Software function	Display energy consumption Data tables and real-time trending charts Design ION system Reports and diagrams Alarm Management Historical tabular data into Microsoft Excel Historical logging and trending Engineering Graphical display User-defined tables and reports
Language	German Spanish Czech Chinese Japanese Italian Polish Chinese (simplified) English French
Format	Digital

### Ordering and shipping details

Category	09760 - POWERLOGIC PME SOFTWARE
Discount Schedule	PM1
Nbr. of units in pkg.	1
Package weight(Lbs)	5 lb(US) (2.27 kg)
Returnability	No

### Packing Units

Package 1 Height	1.57 in (4.000 cm)
Package 1 width	9.45 in (24.000 cm)
Package 1 Length	12.20 in (31.000 cm)

### Offer Sustainability

EU RoHS Directive	Not applicable, out of EU RoHS legal scope
-------------------	--