

# Product End-of-Life Instructions

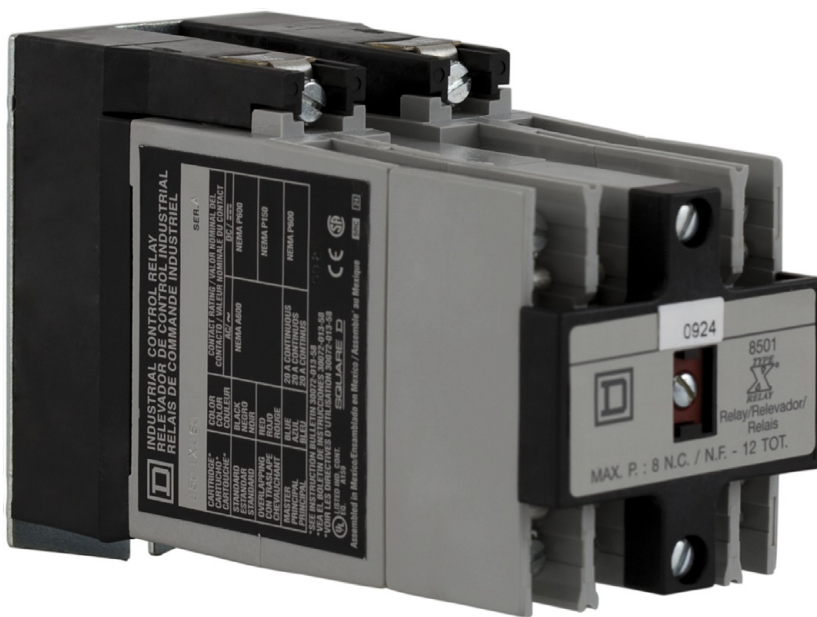
## 8501X Machine Tool Relays (AC)

### Product Range

8501X Machine Tool Relays (AC)

### Marketing Model

8501XO●●●, 8501XM●●●●, 8501XL●●●, 8501XT●●●, 8501XB●●●



### Size in mm (H x L x D):

89 x 57 x 131

### Weight in g:

Between 975 and 1356 without battery

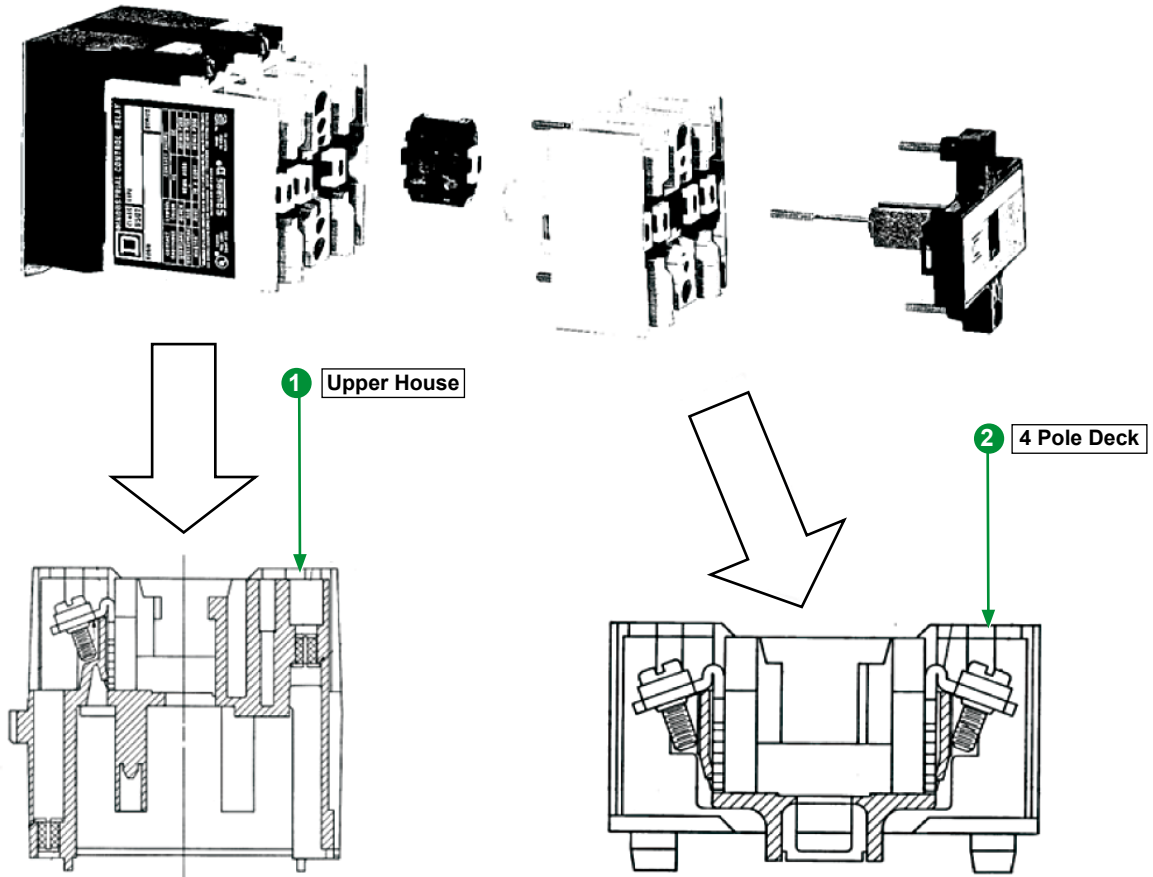


# Operations recommended for the end of life treatment

There are several steps to process the products at the end of life so as to recover components, materials or energy :

Reuse ⇒ Separation for special treatment ⇒ Other Dismantling ⇒ Shredding

The components of the products that optimize the recycling performances are listed, identified and located hereunder.



Recommendation	Number on drawing	Components	Weight (g)	Comment
Special treatment	1	Upper House	105.4	1 Plastic part > <
	2	4 Pole Deck	58	1 Plastic part > PBT +PC + GF30 FR <

## Schneider Electric Industries SAS

35, rue Joseph Monier  
CS30323  
F - 92506 Rueil Malmaison Cedex

RCS Nanterre 954 503 439  
Capital social 896 313 776 €  
www.schneider-electric.com

The version of the Guide used to create the document: End of Life Instruction Drafting Guide of Schneider Electric version V1.

Publication : Schneider Electric