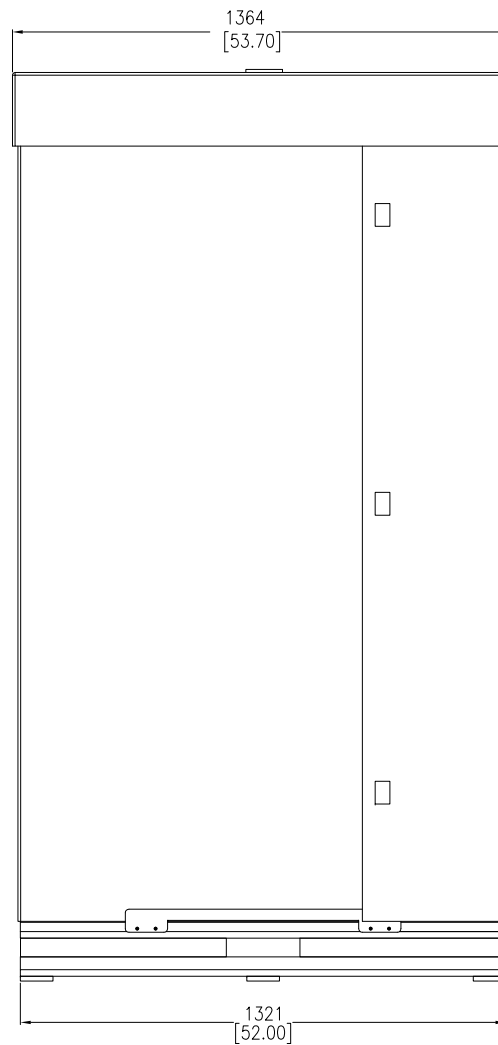
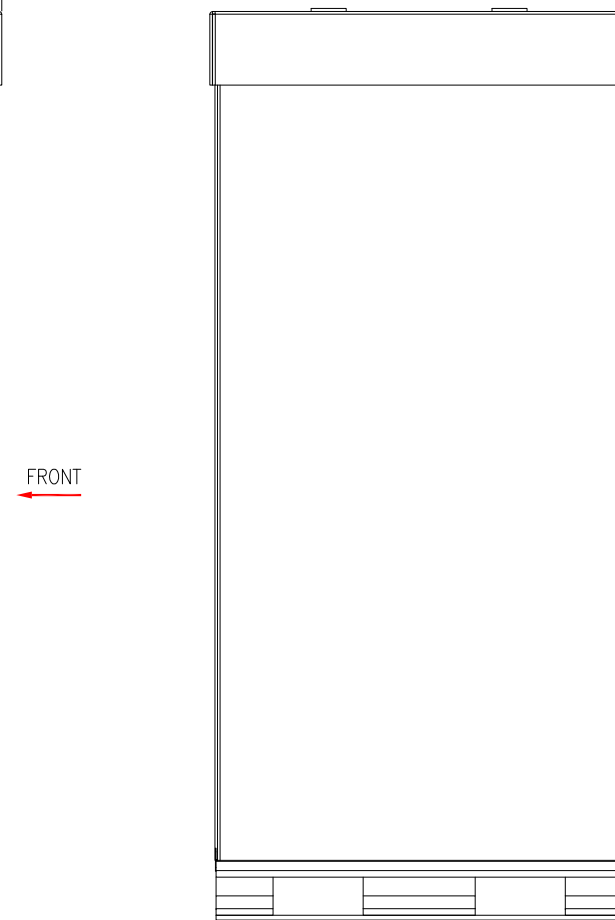


FRONT VIEW



LEFT SIDE VIEW



REAR VIEW

- NOTES:
1. INSTALLATION SHALL COMPLY WITH ALL APPLICABLE NATIONAL, STATE AND LOCAL ELECTRICAL REGULATIONS.
 2. REFER TO PRODUCT DOCUMENTATION FOR ADDITIONAL DETAILS PRIOR TO INSTALLATION AND SITE PREPARATION WORK.
 3. ALL DIMENSIONS ARE IN MILLIMETERS [INCHES].
 4. SHIPPING WEIGHT OF UNIT IS 277 Kg [610 lb].

THIS DRAWING AND SPECIFICATIONS HEREIN ARE THE PROPERTY OF SCHNEIDER ELECTRIC AND SHALL NOT BE COPIED, REPRODUCED OR USED IN WHOLE OR IN PART, AS THE BASIS FOR THE MANUFACTURE OR SALE OF ITEMS WITHOUT WRITTEN PERMISSION FROM SCHNEIDER ELECTRIC. THIS DRAWING IS BASED UPON LATEST AVAILABLE INFORMATION AND IS SUBJECT TO CHANGE WITHOUT NOTICE.

Schneider
Electric

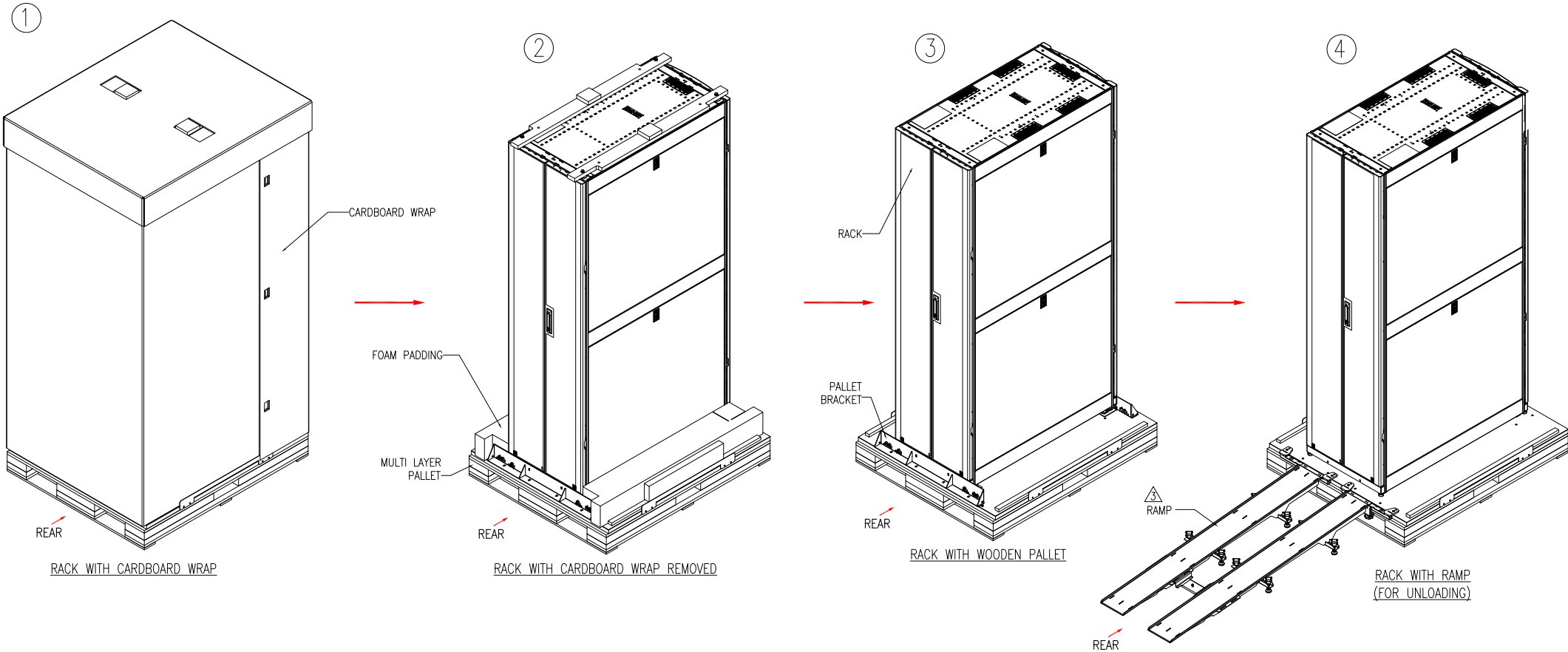
TITLE: NetShelter HS 48U
600mm WIDE X 1200mm DEEP
ENCLOSURE WITH SIDES-SHOCK PACKAGING
PACKING DETAILS

PROJECT: SUBMITTAL DRAWINGS SHEET 1 OF 8

DWG NO: AR9307SP
DRAWN BY: JAYAPRAKASH
ENGINEER: RICHARD PHILLIPS
APPROVED BY: FARRUKH SYED

REV. 0
19-SEP-17
03-OCT-17
03-OCT-17
FIRST ANGLE PROJECTION

UNPACKING AND UNLOADING STEPS



NOTES:

- 1. INSTALLATION SHALL COMPLY WITH ALL APPLICABLE NATIONAL, STATE AND LOCAL ELECTRICAL REGULATIONS.
- 2. REFER TO PRODUCT DOCUMENTATION FOR ADDITIONAL DETAILS PRIOR TO INSTALLATION AND SITE PREPARATION WORK.
- △3. RAMP SKU #: AR9000RAMP IS NOT PART OF THIS SKU AND HAS TO BE ORDERED SEPARATELY.

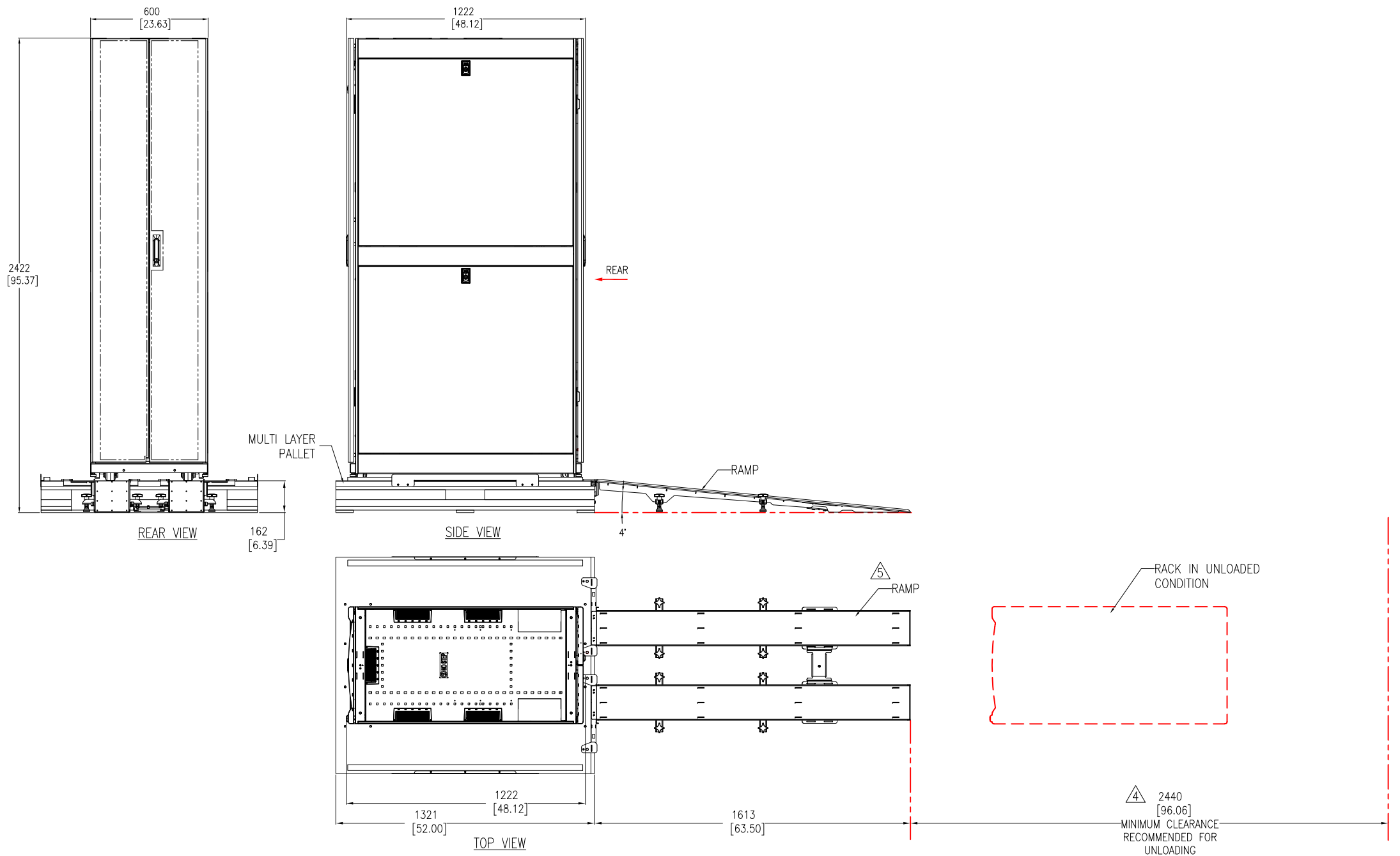
THIS DRAWING AND SPECIFICATIONS HEREIN ARE THE PROPERTY OF SCHNEIDER ELECTRIC AND SHALL NOT BE COPIED, REPRODUCED OR USED IN WHOLE OR IN PART, AS THE BASIS FOR THE MANUFACTURE OR SALE OF ITEMS WITHOUT WRITTEN PERMISSION FROM SCHNEIDER ELECTRIC. THIS DRAWING IS BASED UPON LATEST AVAILABLE INFORMATION AND IS SUBJECT TO CHANGE WITHOUT NOTICE.



TITLE: NetShelter HS 48U
600mm WIDE X 1200mm DEEP
ENCLOSURE WITH SIDES-SHOCK PACKAGING
UNPAACKING/UNLOADING-ISOMETRIC VIEWS
PROJECT: SUBMITTAL DRAWINGS SHEET 2 OF 8

DWG NO: AR9307SP
DRAWN BY: JAYAPRAKASH
ENGINEER: RICHARD PHILLIPS
APPROVED BY: FARRUKH SYED

REV: 0
FIRST ANGLE PROJECTION



- NOTES:**
1. INSTALLATION SHALL COMPLY WITH ALL APPLICABLE NATIONAL, STATE AND LOCAL ELECTRICAL REGULATIONS.
 2. REFER TO PRODUCT DOCUMENTATION FOR ADDITIONAL DETAILS PRIOR TO INSTALLATION AND SITE PREPARATION WORK.
 3. ALL DIMENSIONS ARE IN MILLIMETERS [INCHES].
 - △4. RECOMMENDED SPACE FOR UNLOADING=PALLET DEPTH+RAMP LENGTH+RACK DEPTH+RACK ROLLING DISTANCE OF 1219mm [48 Inches]
 - △5. RAMP SKU #: AR9000RAMP IS NOT PART OF THIS SKU AND HAS TO BE ORDERED SEPARATELY.

THIS DRAWING AND SPECIFICATIONS HEREIN ARE THE PROPERTY OF SCHNEIDER ELECTRIC AND SHALL NOT BE COPIED, REPRODUCED OR USED IN WHOLE OR IN PART, AS THE BASIS FOR THE MANUFACTURE OR SALE OF ITEMS WITHOUT WRITTEN PERMISSION FROM SCHNEIDER ELECTRIC. THIS DRAWING IS BASED UPON LATEST AVAILABLE INFORMATION AND IS SUBJECT TO CHANGE WITHOUT NOTICE.

Schneider Electric

TITLE:
 NetShelter HS 48U
 ENCLOSURE WITH SIDES-SHOCK PACKAGING
 UNLOADING DETAILS

PROJECT: SUBMITTAL DRAWINGS **SHEET:** 3 OF 8

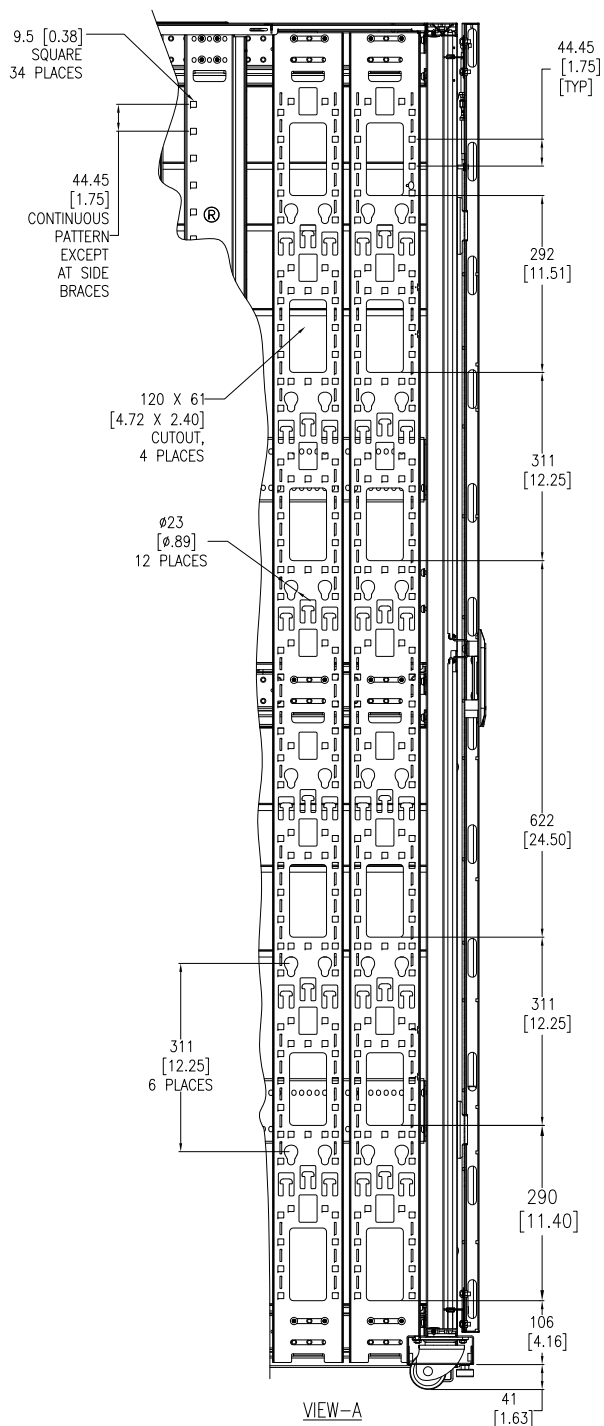
DWG NO: AR9307SP **REV.** 0

DRAWN BY: JAYAPRAKASH **19-SEP-17**

ENGINEER: RICHARD PHILLIPS **03-OCT-17**

APPROVED BY: FARRUKH SYED **03-OCT-17**

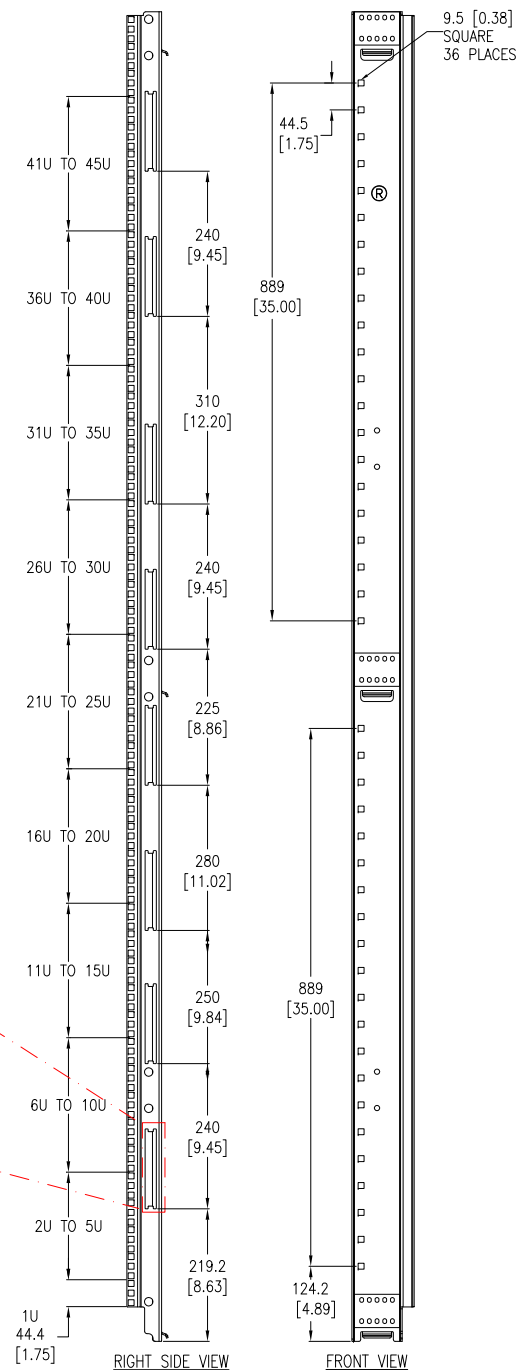
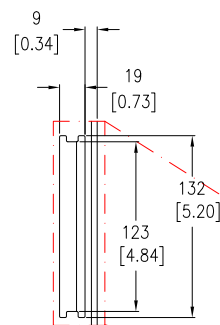
FIRST ANGLE PROJECTION



NOTES:

1. INSTALLATION SHALL COMPLY WITH ALL APPLICABLE NATIONAL, STATE AND LOCAL ELECTRICAL REGULATIONS.
2. REFER TO PRODUCT DOCUMENTATION FOR ADDITIONAL DETAILS PRIOR TO INSTALLATION AND SITE PREPARATION WORK.
3. ALL DIMENSIONS ARE IN MILLIMETERS [INCHES].

ENLARGED VIEW OF SLOT

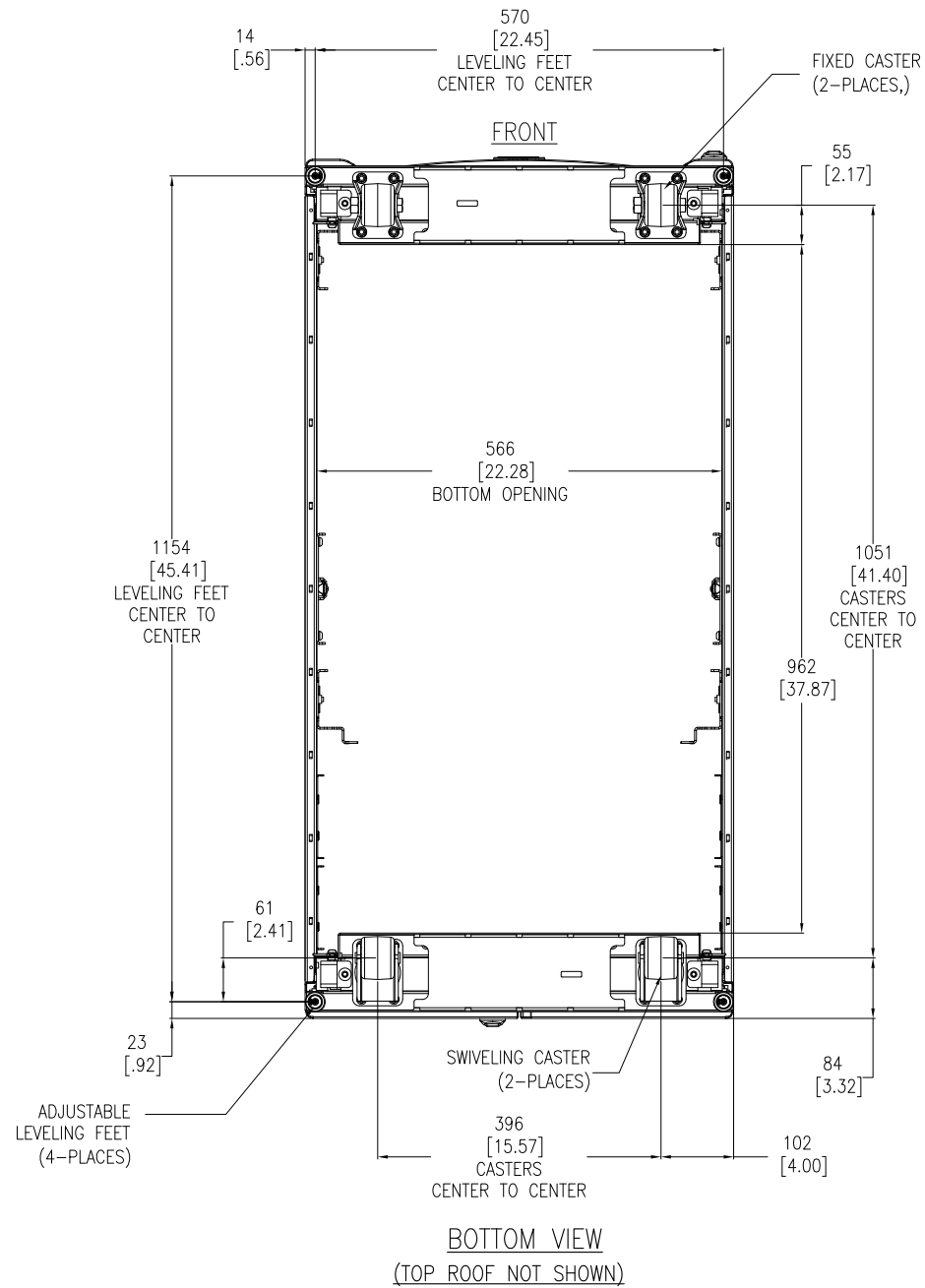
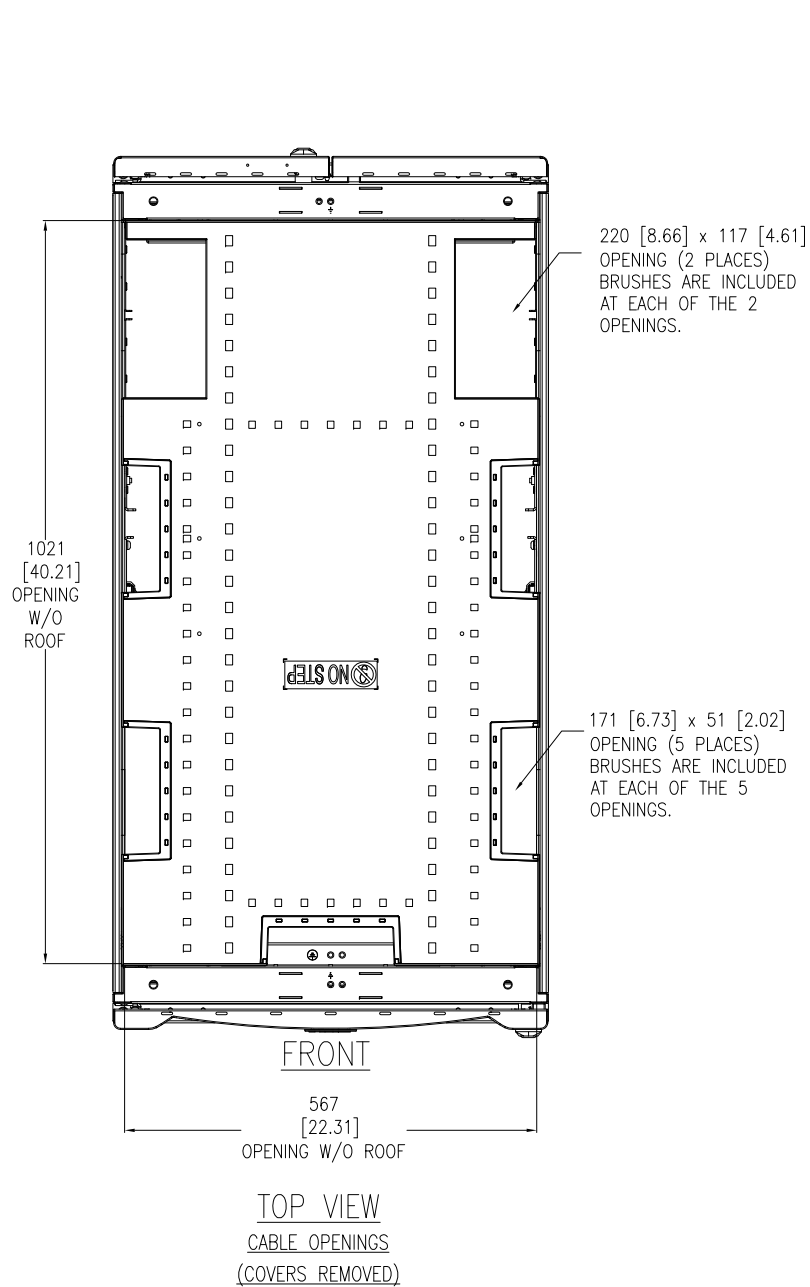


THIS DRAWING AND SPECIFICATIONS HEREIN ARE THE PROPERTY OF SCHNEIDER ELECTRIC AND SHALL NOT BE COPIED, REPRODUCED OR USED IN WHOLE OR IN PART, AS THE BASIS FOR THE MANUFACTURE OR SALE OF ITEMS WITHOUT WRITTEN PERMISSION FROM SCHNEIDER ELECTRIC. THIS DRAWING IS BASED UPON LATEST AVAILABLE INFORMATION AND IS SUBJECT TO CHANGE WITHOUT NOTICE.

Schneider
Electric

TITLE: NetShelter HS 48U
600mm WIDE X 1200mm DEEP
ENCLOSURE WITH SIDES-SHOCK PACKAGING
ENLARGED VIEWS
PROJECT: SUBMITTAL DRAWINGS SHEET 5 OF 8

DWG NO: AR9307SP REV. 0
DRAWN BY: JAYAPRAKASH 19-SEP-17 FIRST
ENGINEER: RICHARD PHILLIPS 03-OCT-17 ANGLE
APPROVED BY: FARRUKH SYED 03-OCT-17 PROJECTION



- NOTES:
1. INSTALLATION SHALL COMPLY WITH ALL APPLICABLE NATIONAL, STATE AND LOCAL ELECTRICAL REGULATIONS.
 2. REFER TO PRODUCT DOCUMENTATION FOR ADDITIONAL DETAILS PRIOR TO INSTALLATION AND SITE PREPARATION WORK.
 3. ALL DIMENSIONS ARE IN MILLIMETERS [INCHES].

THIS DRAWING AND SPECIFICATIONS HEREIN ARE THE PROPERTY OF SCHNEIDER ELECTRIC AND SHALL NOT BE COPIED, REPRODUCED OR USED IN WHOLE OR IN PART, AS THE BASIS FOR THE MANUFACTURE OR SALE OF ITEMS WITHOUT WRITTEN PERMISSION FROM SCHNEIDER ELECTRIC. THIS DRAWING IS BASED UPON LATEST AVAILABLE INFORMATION AND IS SUBJECT TO CHANGE WITHOUT NOTICE.

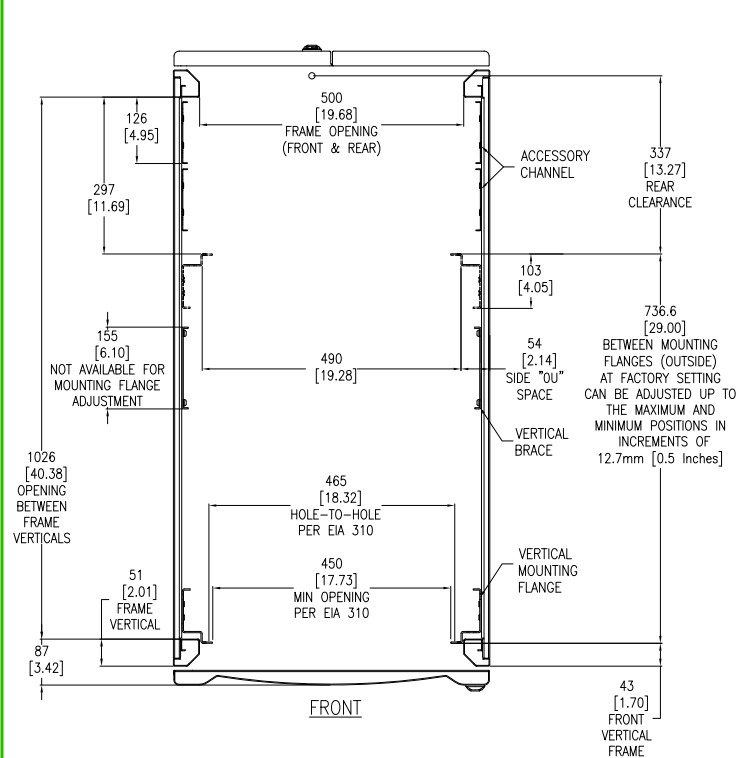
Schneider
Electric

TITLE: NetShelter HS 48U
600mm WIDE X 1200mm DEEP
ENCLOSURE WITH SIDES-SHOCK PACKAGING
TOP AND BOTTOM VIEWS

PROJECT: SUBMITTAL DRAWINGS SHEET 6 OF 8

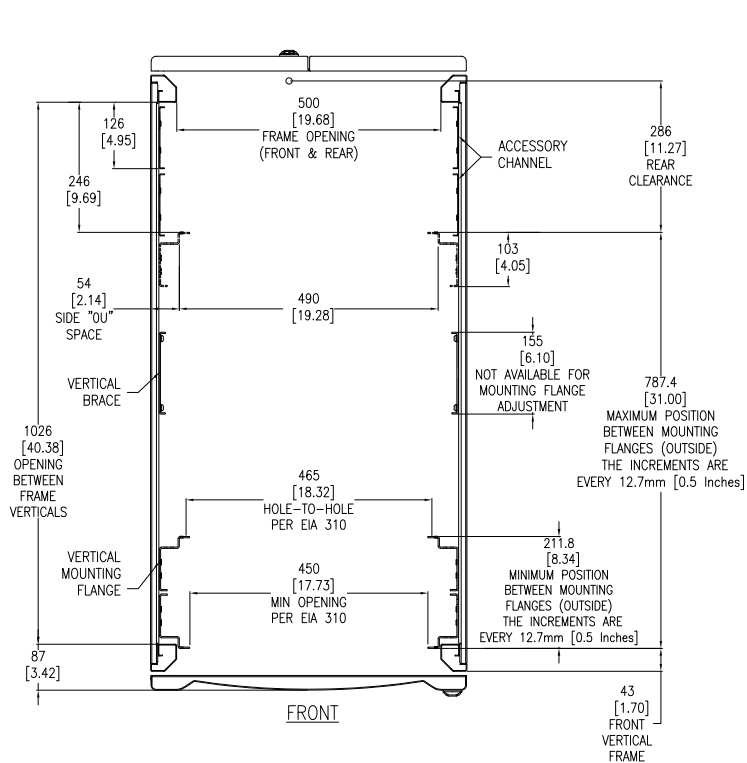
DWG NO: AR9307SP REV. 0

DRAWN BY: JAYAPRAKASH	19-SEP-17	FIRST
ENGINEER: RICHARD PHILLIPS	03-OCT-17	ANGLE
APPROVED BY: FARRUKH SYED	03-OCT-17	PROJECTION



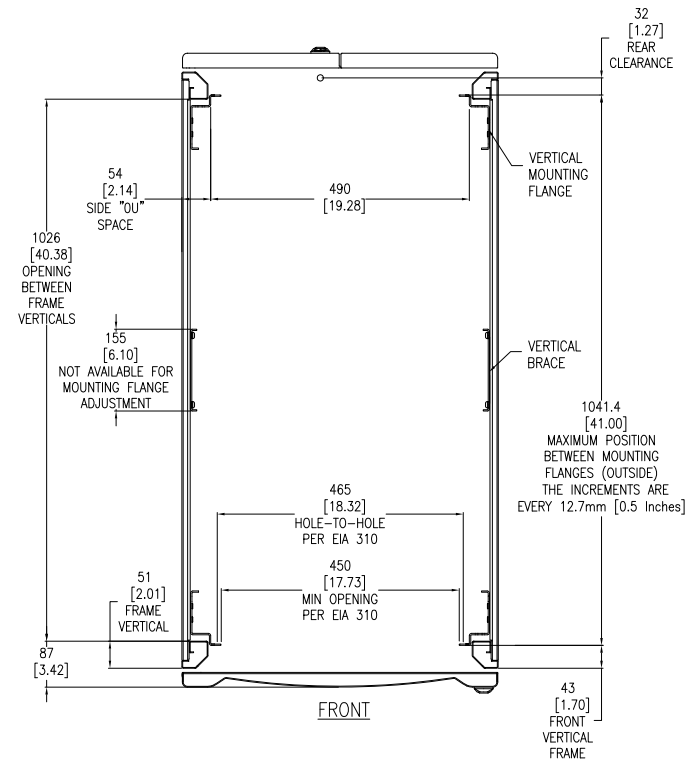
SECTION C-C

STANDARD POSITIONS FOR MOUNTING FLANGES AND
THEIR ADJUSTABILITY WITH TWO ACCESSORY CHANNELS INSTALLED
(LOOKING DOWN)



SECTION C-C

MAXIMUM AND MINIMUM POSITIONS FOR MOUNTING FLANGES AND
THEIR ADJUSTABILITY WITH TWO ACCESSORY CHANNELS INSTALLED
(LOOKING DOWN)



SECTION C-C

POSITIONS FOR MOUNTING FLANGES AND
THEIR ADJUSTABILITY WHEN THE ACCESSORY CHANNELS ARE REMOVED
(LOOKING DOWN)

NOTES:

1. INSTALLATION SHALL COMPLY WITH ALL APPLICABLE NATIONAL, STATE AND LOCAL ELECTRICAL REGULATIONS.
2. REFER TO PRODUCT DOCUMENTATION FOR ADDITIONAL DETAILS PRIOR TO INSTALLATION AND SITE PREPARATION WORK.
3. ALL DIMENSIONS ARE IN MILLIMETERS [INCHES].

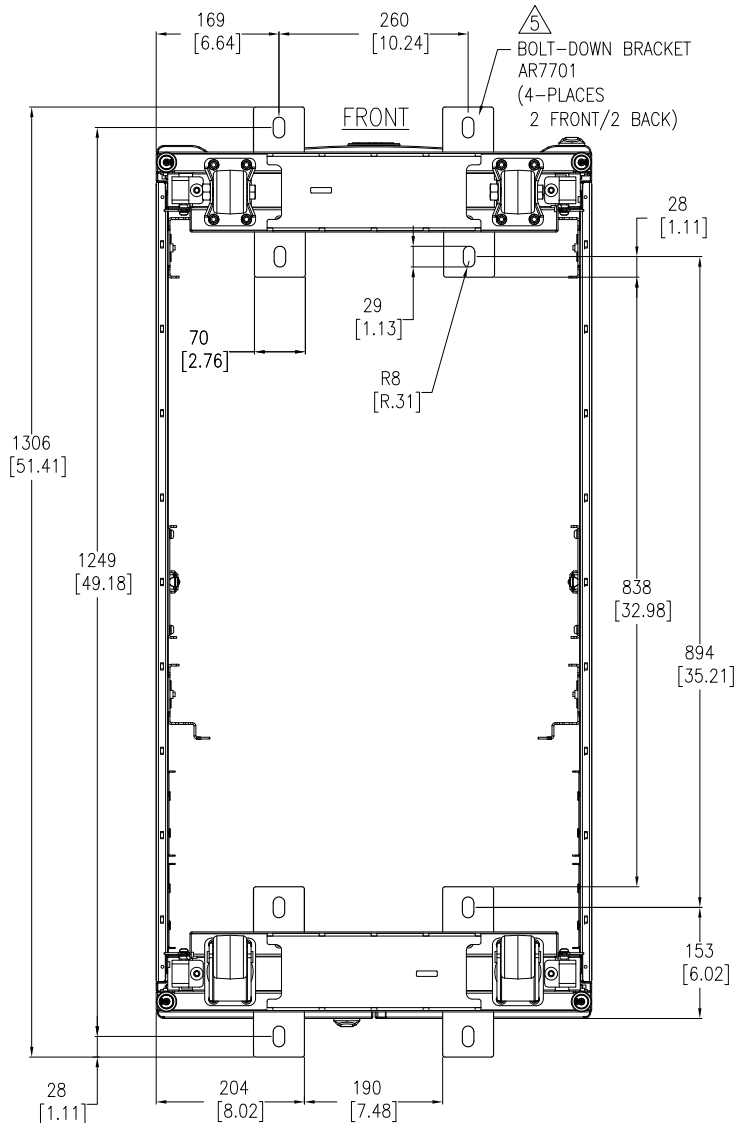
THIS DRAWING AND SPECIFICATIONS HEREIN ARE THE PROPERTY OF SCHNEIDER ELECTRIC AND SHALL NOT BE COPIED, REPRODUCED OR USED IN WHOLE OR IN PART, AS THE BASIS FOR THE MANUFACTURE OR SALE OF ITEMS WITHOUT WRITTEN PERMISSION FROM SCHNEIDER ELECTRIC. THIS DRAWING IS BASED UPON LATEST AVAILABLE INFORMATION AND IS SUBJECT TO CHANGE WITHOUT NOTICE.

Schneider
Electric

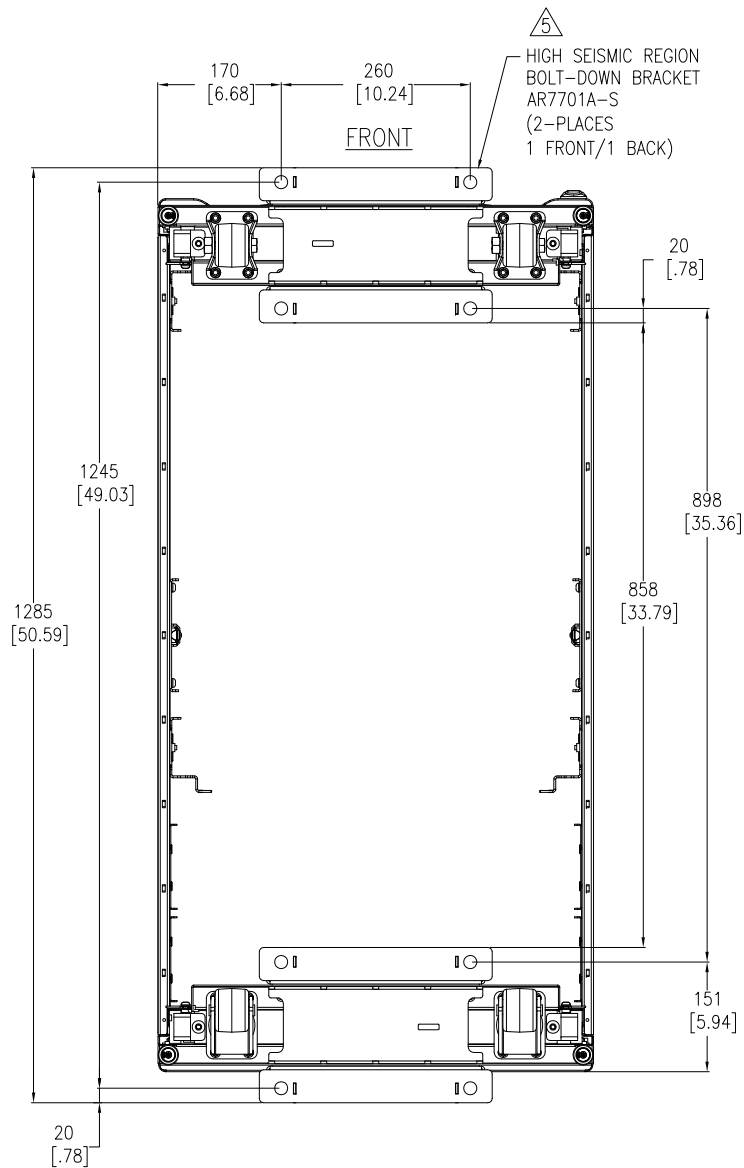
TITLE:
NetShelter HS 48U
600mm WIDE X 1200mm DEEP
ENCLOSURE WITH SIDES-SHOCK PACKAGING
SECTION VIEWS

PROJECT: SUBMITTAL DRAWINGS SHEET 7 OF 8

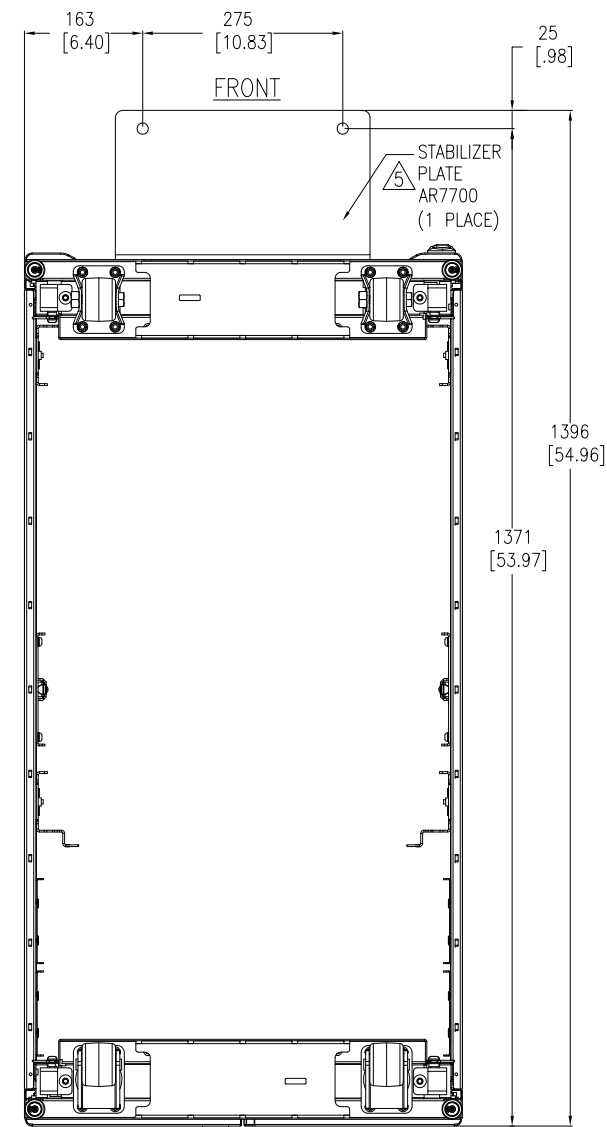
DWG NO: **AR9307SP** REV: **0**
DRAWN BY: JAYAPRAKASH 19-SEP-17 FIRST
ENGINEER: RICHARD PHILLIPS 03-OCT-17 ANGLE
APPROVED BY: FARRUKH SYED 03-OCT-17 PROJECTION



BOTTOM VIEW
(WITH OPTIONAL BOLT-DOWN BRACKETS FOR ANCHORING)
TOP ROOF NOT SHOWN



BOTTOM VIEW
(WITH OPTIONAL HIGH SEISMIC AND OSHPD
BOLT-DOWN BRACKETS FOR ANCHORING)
TOP ROOF NOT SHOWN



BOTTOM VIEW
(WITH OPTIONAL STABILIZER PLATE FOR ANCHORING)
TOP ROOF NOT SHOWN

- NOTES:**
1. INSTALLATION SHALL COMPLY WITH ALL APPLICABLE NATIONAL, STATE AND LOCAL ELECTRICAL REGULATIONS.
 2. REFER TO PRODUCT DOCUMENTATION FOR ADDITIONAL DETAILS PRIOR TO INSTALLATION AND SITE PREPARATION WORK.
 3. ALL DIMENSIONS ARE IN MILLIMETERS [INCHES].
 4. ANCHORING CAN BE INSTALLED EITHER INSIDE OR OUTSIDE OF THE CABINET WITH ONE AT FRONT AND ONE IN BACK.
- △5. BOLT-DOWN KITS (SKU#: AR7700, AR7701 AND AR7701A-S) ARE OPTIONAL AND HAVE TO BE ORDERED SEPARATELY AS NEEDED.

THIS DRAWING AND SPECIFICATIONS HEREIN ARE THE PROPERTY OF SCHNEIDER ELECTRIC AND SHALL NOT BE COPIED, REPRODUCED OR USED IN WHOLE OR IN PART, AS THE BASIS FOR THE MANUFACTURE OR SALE OF ITEMS WITHOUT WRITTEN PERMISSION FROM SCHNEIDER ELECTRIC. THIS DRAWING IS BASED UPON LATEST AVAILABLE INFORMATION AND IS SUBJECT TO CHANGE WITHOUT NOTICE.

Schneider
Electric

TITLE:
NetShelter HS 48U
600mm WIDE X 1200mm DEEP
ENCLOSURE WITH SIDES-SHOCK PACKAGING
ANCHORING VIEWS

PROJECT: SUBMITTAL DRAWINGS **SHEET** 8 OF 8

DWG NO: AR9307SP **REV.** 0

DRAWN BY: JAYAPRAKASH **19-SEP-17**

ENGINEER: RICHARD PHILLIPS **03-OCT-17**

APPROVED BY: FARRUKH SYED **03-OCT-17**

FIRST ANGLE PROJECTION