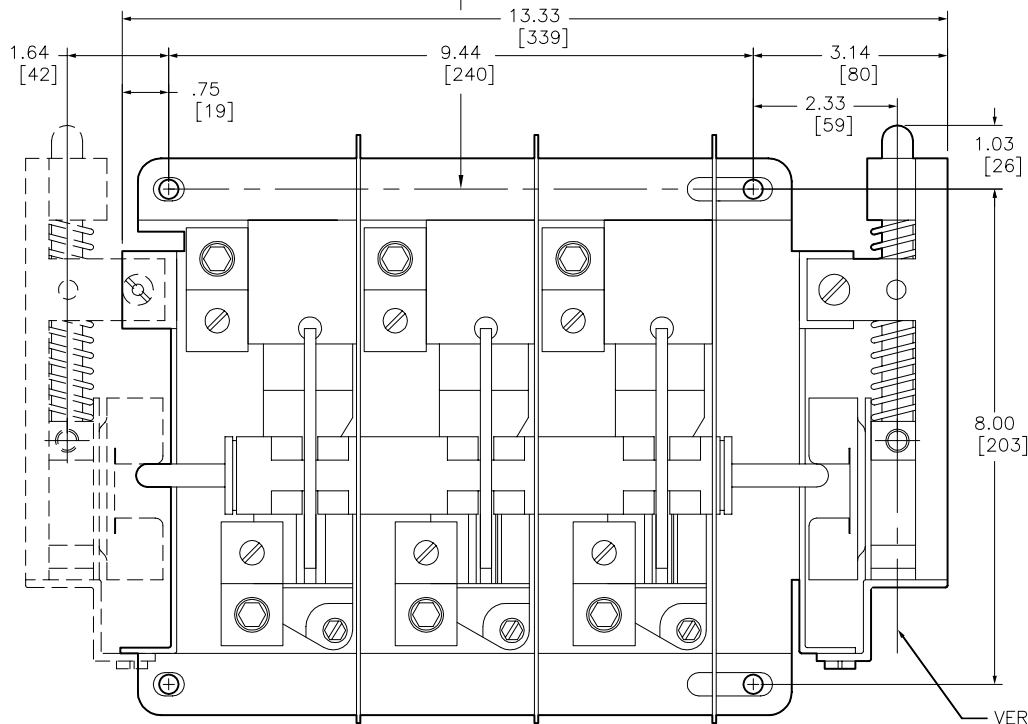


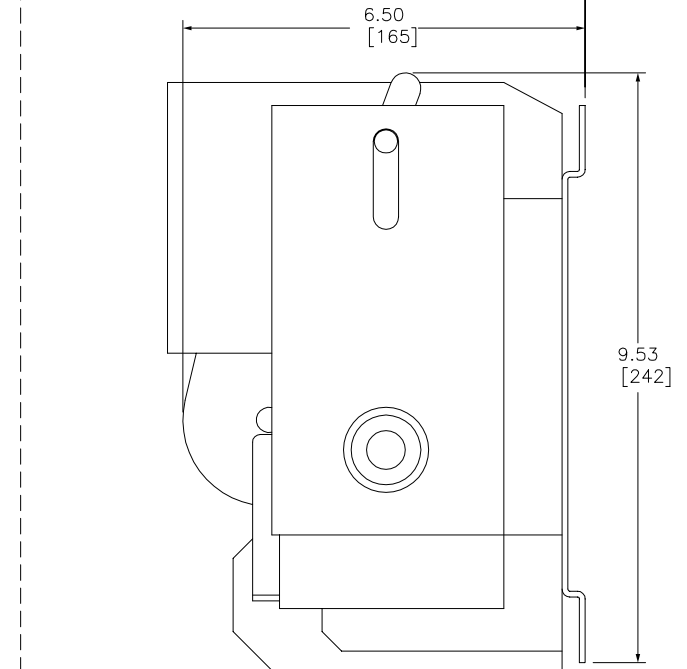
Electrical Clearance/Wire Bending Space

9.38
[239]

Minimum to wall or barrier to insure adequate wire bending space to lug surface when the maximum wire size is used with standard lugs. REF NEC 430-10



Distance from outside of flange to the circuit breaker mounting surface.
9.12 MIN, 19.25 MAX
[232] [489]



Catalog Number: 9422-TF1
 Ratings: 200A/600V UNFUSED
 UL File/CCN: E52369
 CSA File/Class: LR44199
 Meets Standards: -
 Weight: 21.3 lbs
 Wire Size: #6-250 MCM
 Terminal torque: 375 lb-in
 Mounting Hwd.: (4) 5/16-18 screws

"THE SQUARE D COMPANY HAS PROPRIETARY RIGHTS TO THE INFORMATION CONTAINED HEREON. THIS INFORMATION REMAINS THE PROPERTY OF SQUARE D COMPANY AND MAY BE USED ONLY IN CONFORMANCE WITH INSTRUCTIONS ISSUED BY SQUARE D COMPANY. USER SHOULD VERIFY DRAWINGS ARE TO THE LATEST/CURRENT REVISION PRIOR TO INCORPORATING IN A DESIGN FILE."

DO NOT SCALE DRAWING
 UNLESS OTHERWISE SPECIFIED DIMENSIONS ARE IN INCHES

THIRD ANGLE PROJECTION
 TOLERANCES
 UNLESS OTHERWISE SPECIFIED
 2 PLACE DECIMALS ± .01

DISCONNECT (200A/600V UNFUSED)
 CLASS 9422 TYPE TF1

SQUARE D COMPANY

DWG# 9422 TF_OUTLINE_001
 NO.