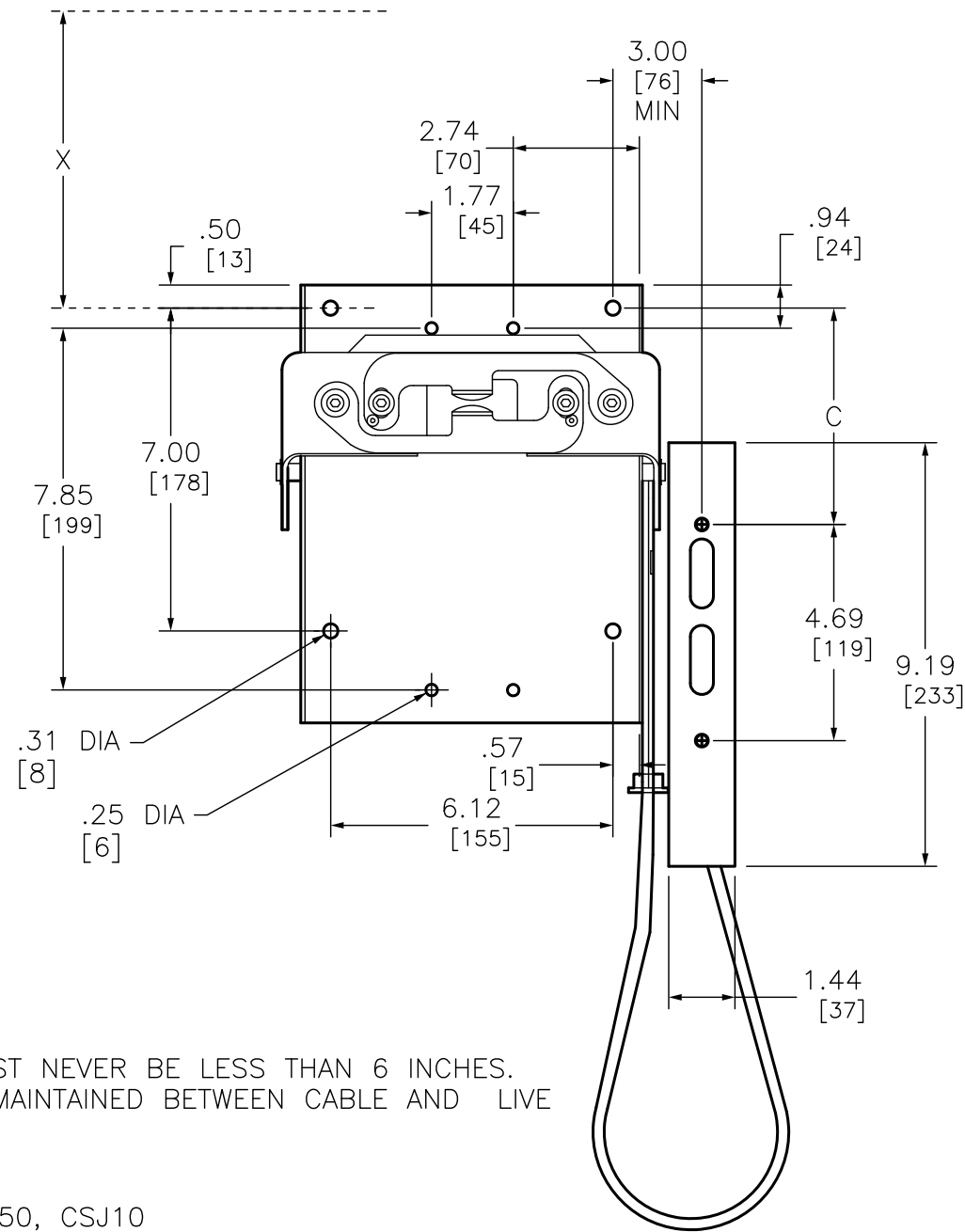


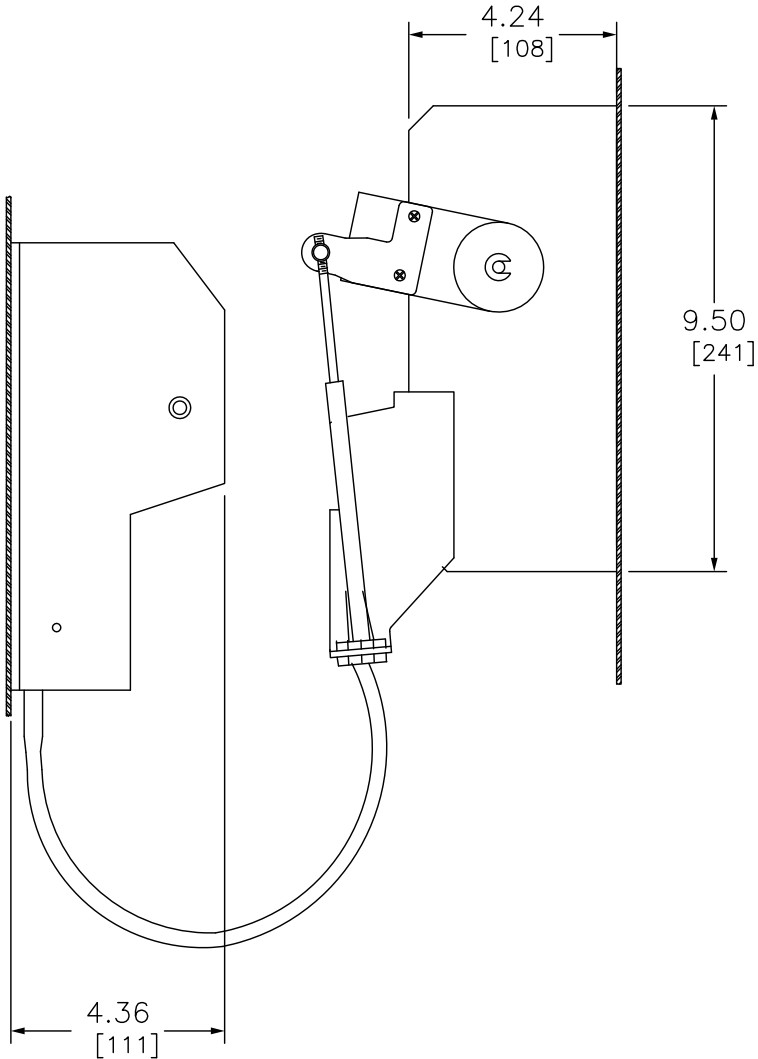
REFER TO NEC ARTICLE 430-10 FOR MINIMUM DIMENSION X FROM CIRCUIT BREAKER TOP MOUNTING HOLE TO WALL OR BARRIER TO ENSURE ADEQUATE WIRE BENDING SPACE.



NOTE: BEND RADIUS IN CABLE MUST NEVER BE LESS THAN 6 INCHES. ELECTRICAL CLEARANCES MUST BE MAINTAINED BETWEEN CABLE AND LIVE ELECTRICAL PARTS.

Catalog Number: 9422-CSJ30, CSJ50, CSJ10  
Ratings: -  
UL File/Guide: E62922/DIHS2  
CSA File/Guide: -  
Meets Standards: -  
Weight: 8.5 lbs  
Wire Size: -  
Terminal torque: -  
Mounting Hwd.: (8) #14-20 screws

CABLE MECHANISMS FOR USE WITH CLASS 9422 TYPE NSJ 3 POLE CIRCUIT BREAKER.				
TYPE	CABLE LENGTH	MAXIMUM BOX DEPTH	MAXIMUM DISTANCE FROM TOP RIGHT MOUNTING HOLE TO UPPER MOUNTING HOLE FOR HANDLE OPERATOR (DIM C)	
			MINIMUM C	MAXIMUM C
CSJ30	36"	24"	3.75"	7"
CSJ50	60"	36"	3.75"	24"
CSJ10	120"	36"	3.75"	5 FEET



DUAL DIMENSIONS: INCHES  
MILLIMETERS

OPERATING MECHANISM CABLE MECHANISM NEMA



DWG# 9422CSJ30  
NO.