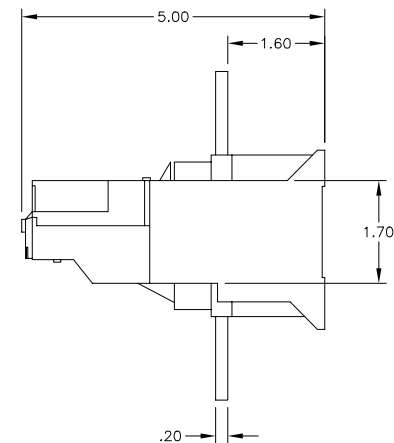
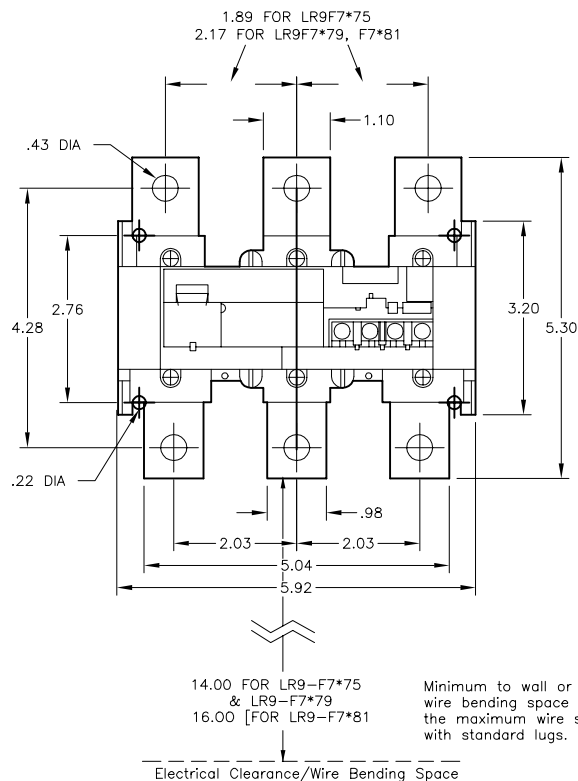


CURRENT SETTING RANGE AMPS	TERMINAL TORQUE (LB. IN.)	CLASS 10 TRIP CODE (1)	CLASS 20 TRIP CODE (1)	FOR DIRECT MOUNTING TO CONTACTOR TYPE LC1
200-300	310	375	575	F265-F500
300-500	310	379	579	F265-F500
380-630	515	381	581	F400-F500

NOTE: ALL LR9F SOLID STATE OVERLOAD RELAYS ARE  
RATED FOR 1,000 VOLTS.

LUG PART NUMBERS		MAXIMUM CABLE SIZE	SUITABLE FOR OVERLOAD RELAY LR9-F7(1)
SINGLE LUG	SET OF SIX LUGS		
DZ2FK1	DZ2FK6	2 X 600 MCM	375, 575, 379, 579
DZ2FL1	DZ2FL6	3 X 600 MCM	381, 581

(1) = SELECT DESIRED SUFFIX FOR  
COMPLETE CATALOG NUMBER



Catalog Number: **LR9-F7(1)**  
Ratings: **SEE CHART**  
UL File/Guide: **-**  
CSA File/Guide: **-**  
Meets Standards: IEC 947-1, 255-8, 255-17 AND VDE 0060 EN 60947-1, 60947-4-1  
Weight: **-**  
Wire Size: **SEE CHART**  
Terminal torque: **SEE CHART**  
Mounting Hwd.: **#10 SCREWS**

"THE SQUARE D COMPANY HAS PROPRIETARY RIGHTS TO THE INFORMATION CONTAINED  
HEREON. THIS INFORMATION REMAINS THE PROPERTY OF SQUARE D COMPANY AND MAY  
BE USED ONLY IN CONFORMANCE WITH INSTRUCTIONS ISSUED BY SQUARE D COMPANY.  
USER SHOULD VERIFY DRAWINGS ARE TO THE LATEST/CURRENT REVISION PRIOR  
TO INCORPORATING IN A DESIGN FILE."

**DO NOT SCALE DRAWING**  
UNLESS OTHERWISE SPECIFIED DIMENSIONS ARE IN INCHES

THIRD ANGLE  
PROJECTION  
**TOLERANCES**  
UNLESS OTHERWISE SPECIFIED  
2 PLACE DECIMALS ± .01

IEC OVERLOAD RELAY (F-LINE)  
LR9-F7(1)

**SQUARE D COMPANY**

DWG# E0221101-01  
NO.