

### Main

Range of product	Lexium linear motion
Product or component type	Shaft journal
Product specific application	To connect an encoder and third-party application specific drive
Accessory / separate part category	Maintenance accessories

### Complementary

Product compatibility	PAS 41 linear axis 40 x 40 mm CAS 41 linear axis 40 x 40 mm
Range compatibility	Lexium PAS Lexium CAS
Product weight	0.03 lb(US) (0.012 kg)
Maximum radial force Fr	230 N
Inertia	0.002 kgcm <sup>2</sup>
Torque value	68.15 lbf.in (7.7 N.m)

### Ordering and shipping details

Category	18233 - LINEAR MOTION ACCESSORIES
Discount Schedule	PC57
GTIN	03606485220031
Nbr. of units in pkg.	1
Package weight(Lbs)	0.1 lb(US) (0.05 kg)
Returnability	No
Country of origin	DE

### Packing Units

Package 1 Height	0.600 dm
Package 1 width	1.200 dm
Package 1 Length	1.600 dm

### Offer Sustainability

California proposition 65	WARNING: This product can expose you to chemicals including: Lead and lead compounds which is known to the State of California to cause Carcinogen & Reproductive harm. For more information go to <a href="http://www.p65warnings.ca.gov">www.p65warnings.ca.gov</a>
EU RoHS Directive	Pro-active compliance (Product out of EU RoHS legal scope) <a href="#">EU RoHS Declaration</a>
Toxic heavy metal free	Yes
Mercury free	Yes
RoHS exemption information	<a href="#">Yes</a>
China RoHS Regulation	<a href="#">China RoHS Declaration</a>

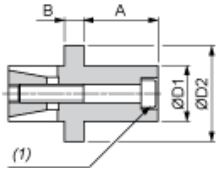
## Contractual warranty

---

Warranty	18 months
----------	-----------

---

Dimensions



Dimensions in mm

A	B	ØD1	ØD2	ISO 4762 screw (1)
12	5.5	12	17	M4

Dimensions in in.

A	B	ØD1	ØD2	ISO 4762 screw (1)
0.47	0.22	0.47	0.67	M4