

# Instruction Bulletin

## QMBHW and QMBJW Circuit Breaker Adapter Units Installation

### Class 4620

Retain for future use.

Replaces: 80043-339-03

### INTRODUCTION

This bulletin contains the instructions for installing QMBHW and QMBJW units into QMB panelboards and switchboards also, this document contains QMB Circuit Breaker replacement instructions.

### Installing the QMB Circuit Breaker Unit

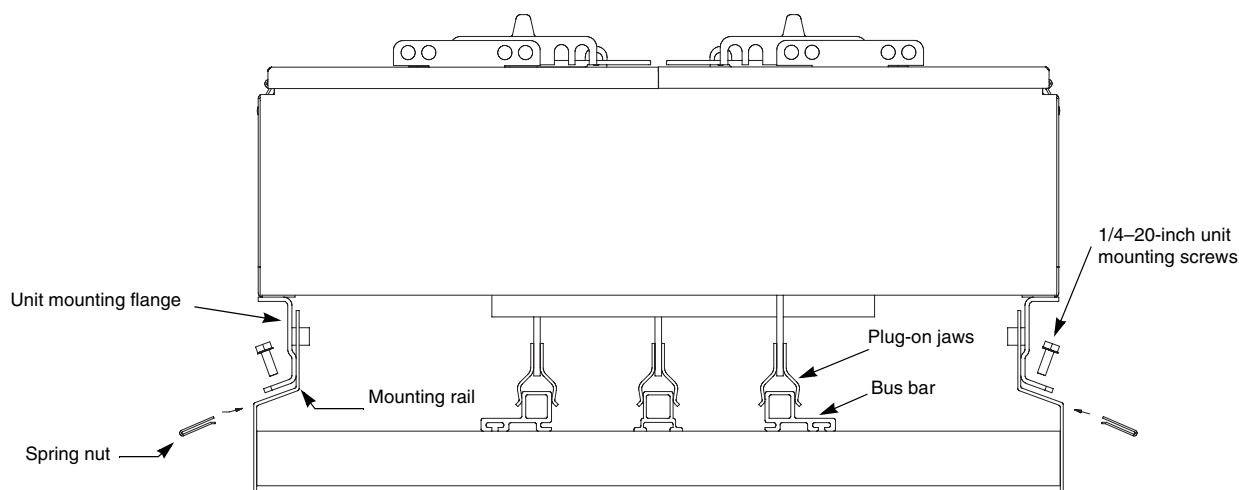
## ⚠ DANGER

### HAZARD OF ELECTRIC SHOCK, EXPLOSION OR ARC FLASH

- Apply appropriate personal protective equipment (PPE) and follow safe electrical work practices. See NFPA 70E.
- This equipment must only be installed and serviced by qualified electrical personnel.
- Turn off all power supplying this equipment before working on or inside equipment.
- Always use a properly rated voltage sensing device to confirm power is off.
- Turn off circuit breaker(s) before making or removing load side connections.
- Replace all devices, doors and covers before turning on power to this equipment.

**Failure to follow these directions will result in death or serious injury.**

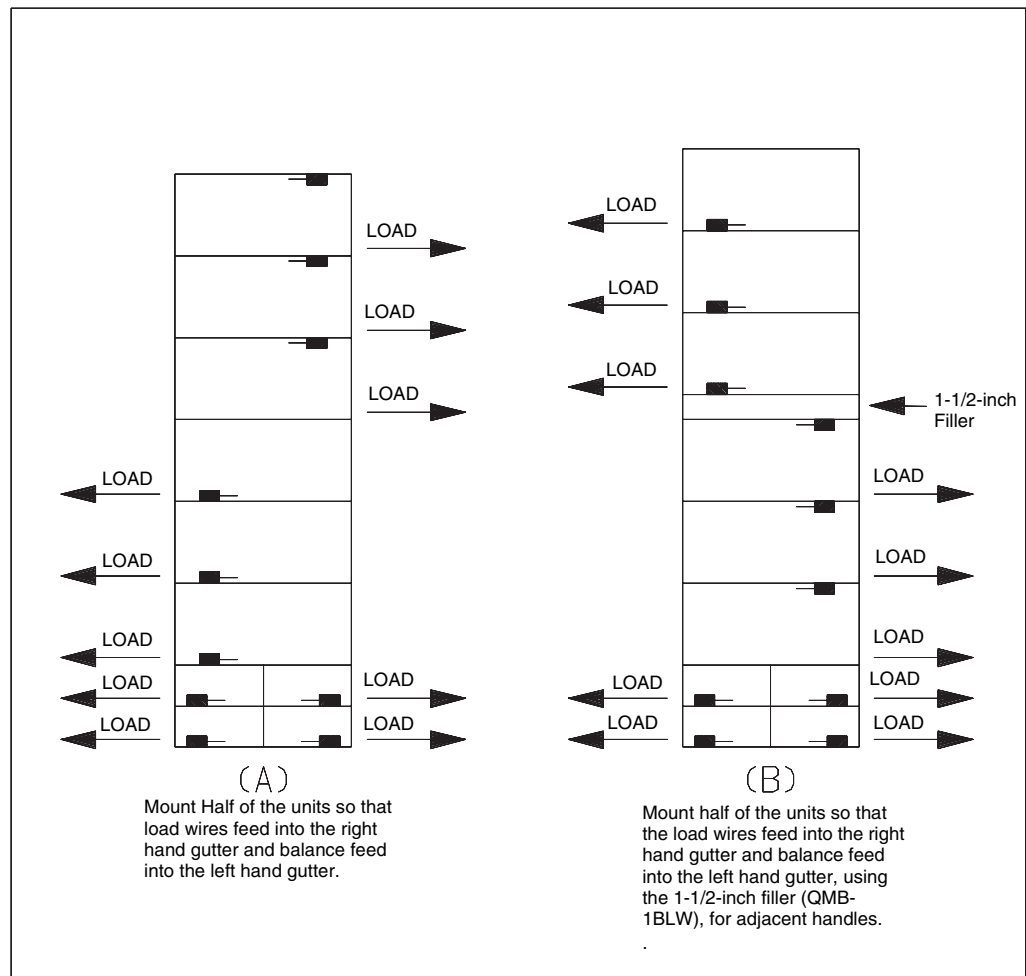
Figure 1: Side View of QMBHW Unit



1. Turn off the power supplying this equipment before working on or inside the QMB unit. Use a properly rated voltage sensing device to confirm power is off.
2. Determine where the spring nuts (2) per side, will be placed for the desired or circuit breaker unit position. See Side View of QMBHW Unit.
3. Install the spring nuts (2) per side, into the slots on the mounting rails. See Figure 1.

4. Turn the circuit breaker handle(s) OFF (O), and position the plug-on jaws over the bus bars with the formed support ears of the unit mounting flanges inside the slots to the mounting rails. See Figure 1.
5. Plug the unit into the interior. See Figure 1.
6. Securely seat the unit mounting flanges and plug-on jaws.
7. Install all of the 1/4 x 20-inch unit mounting screws provided with the kit, and torque to 30 in-lb (3 N•m). See Figure 1.
8. See "Re-Energizing the QMB Unit" on page 4.

**Figure 2: Positioning of Single and Twin Unit Handles (top or bottom)**



## Replacing a Circuit Breaker in a QMBHW or QMBJW Unit

### **⚠ DANGER**

#### **HAZARD OF ELECTRIC SHOCK, EXPLOSION OR ARC FLASH**

- Apply appropriate personal protective equipment (PPE) and follow safe electrical work practices. See NFPA 70E.
- This equipment must only be installed and serviced by qualified electrical personnel.
- Turn off all power supplying this equipment before working on or inside equipment.
- Always use a properly rated voltage sensing device to confirm power is off.
- Turn off circuit breaker(s) before making or removing load side connections.
- Replace all devices, doors and covers before turning on power to this equipment

**Failure to follow these directions will result in death or serious injury.**

1. Turn off the power supplying this equipment before working on or inside the QMB unit. Use a properly rated voltage sensing device to confirm power is off.
2. Turn circuit breaker adapter unit handle(s) to the OFF position.
3. Remove circuit breaker adapter unit from panelboard.
4. Remove 10–32 x 1/4-inch screws (4 for H frame or 6 for J frame) and lift out the interlock assembly (plus the cover plate over empty section for J frame). Retain the screws for future use. See Figure 3, item A.
5. Remove the circuit breaker by removing the 10–32 x 2 5/8-inch screws. See Figure 4 item B. Remove terminal bolts and washers. See Figure 4 item C. Slide the circuit breaker off the bus connectors. See Figure 4 item D.
6. Remove the line side lugs from the NEW circuit breaker.
  - For the H frame circuit breaker install terminal nut kit S37444.
  - For the J frame circuit breaker install terminal nut kit S37445.Install the terminal nut kit onto the circuit breakers, according to the instructions provided with the kit.
7. Insert new circuit breakers so that they are aligned with the bus connectors. Install terminal bolts and washers. See Figure 4, items C and D.  
**Important:** Do not tighten the terminal bolts at this point.
8. Insert 10–32 x 2 5/8-inch screws. See Figure 4, item B. Tighten to 21 in-lb (2 N•m).
9. Tighten the terminal nut kit bolts according to the instructions provided with the kit.
10. Reassemble the interlock assembly (plus the cover plate for J frame) using the 10-32 x 1/4-inch screws removed in step 4 above.
11. Re-Install the circuit breaker adapter unit into the panelboard following the steps in: “Installing the QMB Circuit Breaker Unit” on page 1.
12. Finish the installation by following the steps in “Re-Energizing the QMB Unit” on page 4.

Figure 3: QMBHW Top View (no breakers installed)

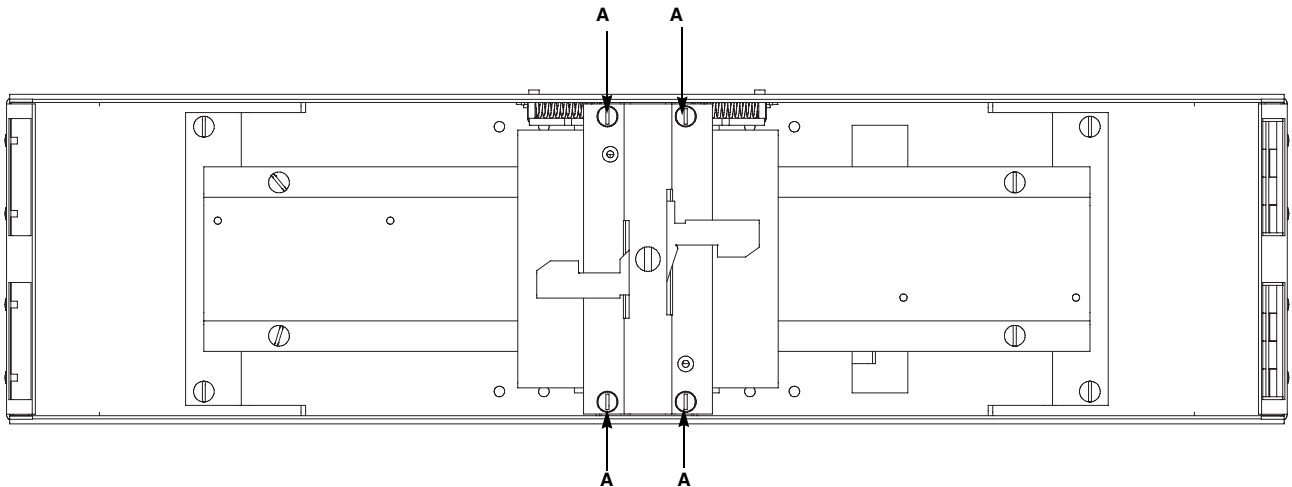
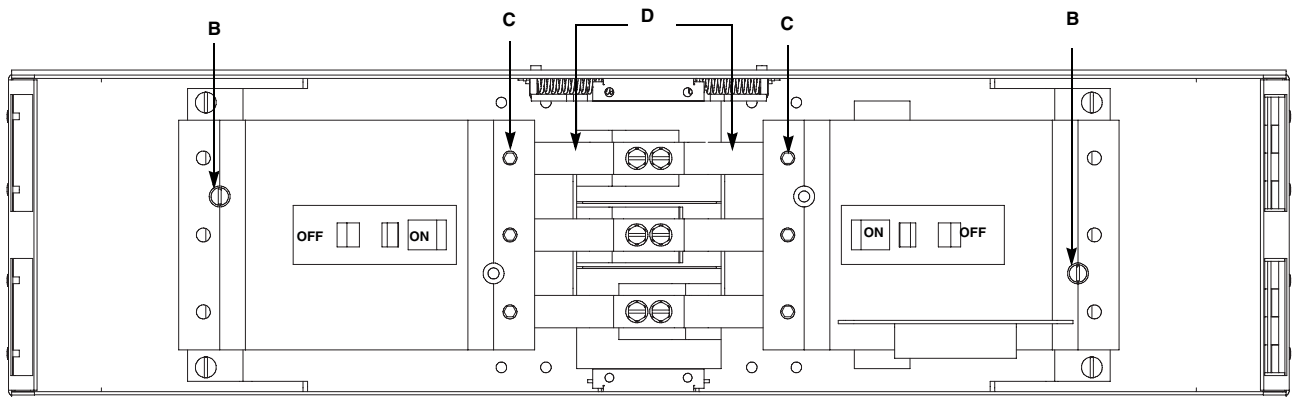


Figure 4: QMBHW Top View (breakers shown)



### Re-Energizing the QMB Unit

Review the **DANGER** table on page 3 before proceeding.

1. Turn off all downstream loads.
2. Turn on the power supplying the QMB unit.
3. Turn on the circuit breakers within the QMB unit.
4. Turn on all downstream loads.

Schneider Electric USA  
252 North Tippecanoe  
Peru, IN 46970 USA  
1-888-SquareD (1-888-778-2733)  
www.us.SquareD.com

Electrical equipment should be installed, operated, serviced, and maintained only by qualified personnel. No responsibility is assumed by Schneider Electric for any consequences arising out of the use of this material.

© 2005 Schneider Electric All Rights Reserved



# California Proposition 65 Warning—Nickel Compounds and Bisphenol A (BPA)

## Advertencia de la Proposición 65 de California— compuestos de níquel y Bisfenol A (BPA)

## Avertissement concernant la Proposition 65 de Californie— composés de nickel et Bisphénol A (BPA)

**⚠️ WARNING:** This product can expose you to chemicals including Nickel compounds, which are known to the State of California to cause cancer, and Bisphenol A (BPA), which is known to the State of California to cause birth defects or other reproductive harm. For more information go to [www.P65Warnings.ca.gov](http://www.P65Warnings.ca.gov).

**⚠️ ADVERTENCIA:** Este producto puede exponerle a químicos incluyendo compuestos de níquel, que son conocidos por el Estado de California como causantes de cáncer, y Bisfenol A (BPA), que es conocido por el Estado de California como causante de defectos de nacimiento u otros daños reproductivos. Para mayor información, visite [www.P65Warnings.ca.gov](http://www.P65Warnings.ca.gov).

**⚠️ AVERTISSEMENT:** Ce produit peut vous exposer à des agents chimiques, y compris composés de nickel, identifiés par l'État de Californie comme pouvant causer le cancer, et Bisphénol A (BPA) reconnus par l'État de Californie comme pouvant causer des malformations congénitales ou autres troubles de l'appareil reproducteur. Pour de plus amples informations, prière de consulter [www.P65Warnings.ca.gov](http://www.P65Warnings.ca.gov).

All trademarks are the property of Schneider Electric SE, its subsidiaries, and affiliated companies.

**Schneider Electric USA, Inc.**  
800 Federal Street  
Andover, MA 01810 USA  
888-778-2733  
[www.schneider-electric.us](http://www.schneider-electric.us)

Todas las marcas comerciales son propiedad de Schneider Electric SE, sus filiales y compañías afiliadas.

Importado en México por:  
**Schneider Electric México, S.A. de C.V.**  
Av. Ejercito Nacional No. 904  
Col. Palmas, Polanco 11560 México, D.F.  
55-5804-5000  
[www.schneider-electric.com.mx](http://www.schneider-electric.com.mx)

Toutes les marques commerciales sont la propriété de Schneider Electric SE, ses filiales et compagnies affiliées.

**Schneider Electric Canada, Inc.**  
5985 McLaughlin Road  
Mississauga, ON L5R 1B8 Canada  
800-565-6699  
[www.schneider-electric.ca](http://www.schneider-electric.ca)