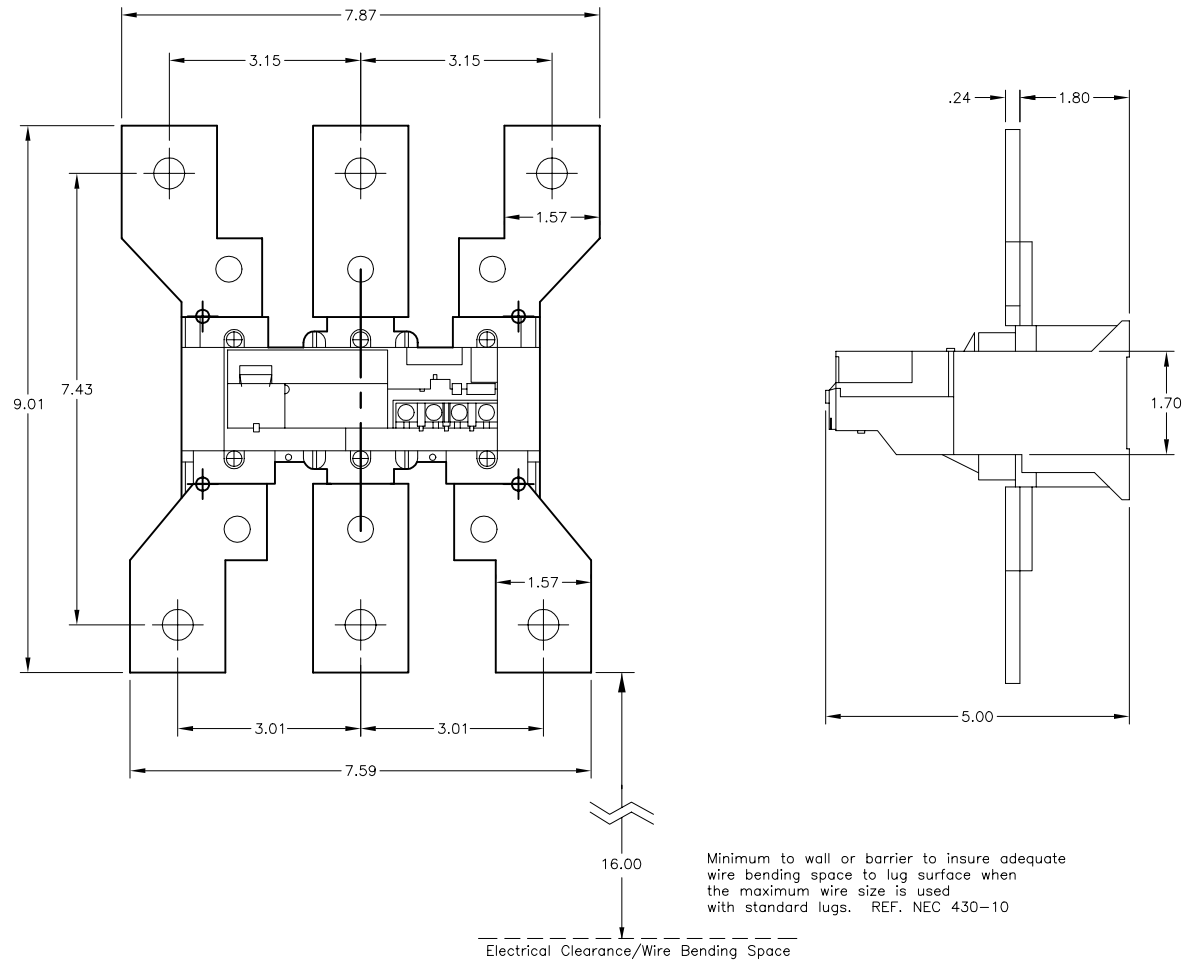


LUG PART NUMBERS		MAXIMUM CABLE SIZE	SUITABLE FOR OVERLOAD RELAY
SINGLE LUG	SET OF SIX LUGS		
DZ2FL1	DZ2FL6	3 X 600 MCM	LR9-F7381, LR9-F7581

NOTE: THIS DRAWING REPRESENTS THE
MOUNTING OF LR9-F7381 &
LR9-F7581 BENEATH LC1-F630.



Catalog Number: LR9-F7381 & LR-F7581
Ratings: 380-630 AMPS, 1000 VOLTS
UL File/Guide: —
CSA File/Guide: —
Meets Standards: IEC 947-1, 255-8, 255-17 AND VDE 0060 EN 60947-1, 60947-4-1
Weight: —
Wire Size: SEE CHART
Terminal torque: 515 LB-IN
Mounting Hwd.: #10 SCREWS

"THE SQUARE D COMPANY HAS PROPRIETARY RIGHTS TO THE INFORMATION CONTAINED HEREON. THIS INFORMATION REMAINS THE PROPERTY OF SQUARE D COMPANY AND MAY BE USED ONLY IN CONFORMANCE WITH INSTRUCTIONS ISSUED BY SQUARE D COMPANY. USER SHOULD VERIFY DRAWINGS ARE TO THE LATEST/CURRENT REVISION PRIOR TO INCORPORATING IN A DESIGN FILE."

DO NOT SCALE DRAWING
UNLESS OTHERWISE SPECIFIED DIMENSIONS ARE IN INCHES

THIRD ANGLE
PROJECTION
TOLERANCES
UNLESS OTHERWISE SPECIFIED
2 PLACE DECIMALS ± .01

IEC OVERLOAD RELAY (F-LINE)
LR9-F7381 & LR8-F7581

SQUARE D COMPANY

DWG# E0221201-01
NO.