



Main

| | |
|---------------------------|--------------------------------|
| Product or component type | Industrial Control Transformer |
| Power Rating | 100 VA |
| Primary Voltage | 208 V |
| Secondary Voltage | 24 V |
| Type | T |

Complementary

| | |
|--------------------------------|-----------------------|
| Number of Phases | 1 phase |
| Power Rating | 100 VA |
| Primary to Secondary Voltage | 208 V 24 V |
| Temperature rise | 55 °C |
| Electrical connection | Screw clamp terminals |
| Maximum Height | 2.89 in (73.41 mm) |
| Maximum Width | 3.38 in (85.85 mm) |
| Maximum Depth | 3.34 in (84.84 mm) |
| Material | Copper winding |
| Fingersafe Cover Compatibility | FSC1 |

Environment

| | |
|------------------------|--|
| Product certifications | CSA file LR37055 guide 184-N-90 UL listed file E61239 |
| Enclosure Type | Not rated (open device) |
| Insulation temperature | 221 °F (105 °C) |

Ordering and shipping details

| | |
|-----------------------|----------------------------------|
| Category | 16200 - 9070 T (NOT TF) 50-200VA |
| Discount Schedule | CP8 |
| GTIN | 00785901905387 |
| Nbr. of units in pkg. | 1 |
| Package weight(Lbs) | 3.87 lb(US) (1.76 kg) |
| Returnability | Yes |
| Country of origin | MX |

Packing Units

| | |
|------------------|---------------------|
| Package 1 Height | 3.70 in (9.398 cm) |
| Package 1 width | 4.10 in (10.414 cm) |
| Package 1 Length | 4.30 in (10.922 cm) |

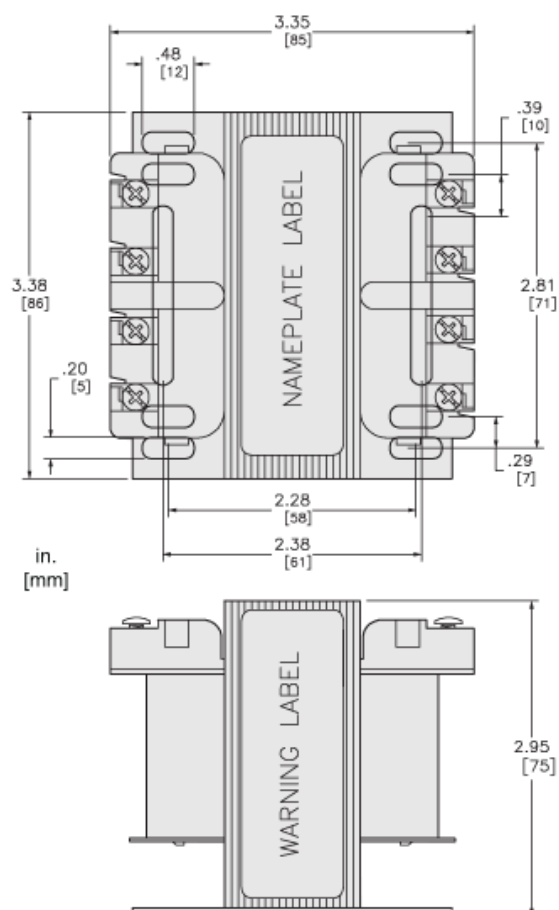
Offer Sustainability

| | |
|----------------------------|---|
| Sustainable offer status | Green Premium product |
| REACH free of SVHC | Yes |
| EU RoHS Directive | Compliant EU RoHS Declaration |
| Toxic heavy metal free | Yes |
| Mercury free | Yes |
| RoHS exemption information | Yes |
| China RoHS Regulation | China RoHS Declaration |
| Environmental Disclosure | Product Environmental Profile |
| PVC free | Yes |

Contractual warranty

| | |
|----------|----------|
| Warranty | 10 Years |
|----------|----------|

Approximate Dimensions



Connections and Wiring Diagrams

Voltage and Connection Options

| Voltage Code | Voltages | | Connections | |
|--------------|----------|-----------|----------------------|----------------------|
| | Primary | Secondary | Primary | Secondary |
| D7 | 120 | 24 | Connect to H1 and H2 | Connect to X1 and X2 |
| D14 | 208 | 24 | | |
| D16 | 600 | 24 | | |
| D25 | 277 | 24 | | |
| D88 | 380 | 24 | | |
| D112 | 230 | 24 | | |

