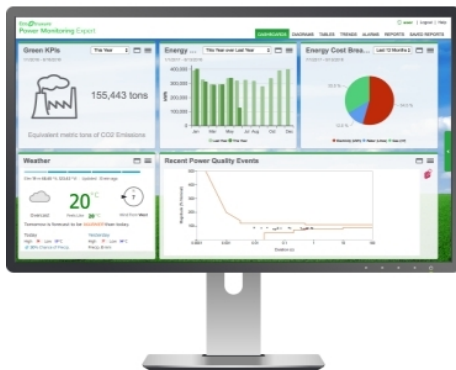


## Product data sheet

### Characteristics

# PSWMTNCZZSPEZZ

## IT Billing Module for Power Monitoring Expert software (Data Centers)



### Main

Range	EcoStruxure Building Operation
Product brand	Schneider Electric
Product or component type	Software
Software type	Add-on
Software designation	Power Monitoring Expert
Type of license	Server option
Software version	V8.1
Market segment	Datacenter

### Complementary

Function available	Option
Format	Digital

### Ordering and shipping details

Category	09760 - POWERLOGIC PME SOFTWARE
Discount Schedule	PM1
Nbr. of units in pkg.	1
Package weight(Lbs)	5 lb(US) (2.27 kg)
Returnability	No

### Packing Units

Package 1 Height	1.57 in (4.000 cm)
Package 1 width	9.45 in (24.000 cm)
Package 1 Length	12.20 in (31.000 cm)

### Offer Sustainability

EU RoHS Directive	Not applicable, out of EU RoHS legal scope
-------------------	--

The information provided in this documentation contains general descriptions and/or technical characteristics of the performance of the products contained herein. This documentation is not intended as a substitute for and is not to be used for determining suitability or reliability of these products for specific user applications. It is the duty of any such user or integrator to perform the appropriate and complete risk analysis, evaluation and testing of the products with respect to the relevant specific application or use thereof. Neither Schneider Electric Industries SAS nor any of its affiliates or subsidiaries shall be responsible or liable for misuse of the information contained herein.